



◀ EXPANDING HORIZONS ▶

Developers:
Krupesh Patel & Other's

"Greenwoods Serenity"
Opp, Vicenza Highlands,
Behind FGI Campus,
Gotri - Sevasi Road,
Vadodara.

Contact Details
(M) +91 9909344400

E-mail: mktg@neptunerealty.in
www.neptunerealtygroup.com





the villa life

The luxurious life at Greenwoods Serenity sums itself up in its line-up of fabulous villas set in spacious plot sizes. Each of these luxury villas is a perfect combination of lavish space and exquisite style.

The spacious rooms extend from elegant formal areas, living and dining space to kitchen and bathrooms. Standing as testimonies to thoughtful space combined with grandeur, the villas at Greenwoods Serenity are here to take luxury living to newer heights of class and elegance.




Space. Design.
Form. Elegance.

And most importantly freedom defines
Greenwoods Serenity. Freedom from satiated
living spaces, lacklustre environments and
mundane lifestyle.

Welcome into the gates of luxury living

Rising to fulfill the expectations in luxury
living, a home at Greenwoods Serenity forces you
to reconsider the very notion of what an ideal
residence should be like.





Imaginative, Impressive.
Innovative, Intelligent.

Your villa at Greenwoods Serenity is the result
of an in-depth study of the evolving
preferences and lifestyle needs.

When your
dreams get
translated on the
drawing board!

No wonder, the villas offer more space inside as well as out of
your villa. Generous room sizes, spacious roads, green
enveloped gardens, relevant leisure amenities, secure campus
and a small-cohesive community of elite residences.

All that you always desired from your dream abode!





SPECIFICATIONS

Structure: All RCC & Brick/Block Masonry works as per structural engineer's design

Wall Finish: Inside smooth plaster with wall putty & outside surface to be painted with weather-resistant paint

Flooring: Vitrified flooring in all rooms

Doors: Decorative main door & all internal doors with laminate finish or as per architect's design

Windows: Anodized Aluminium / UPVC Section Windows

Terrace: Open terrace finished with china mosaic

Kitchen: Granite kitchen platform with SS Sink, ceramic tiles dado up to lintel level.

Bath: Designer Bathrooms with premium fittings & vessels, ceramic tiles dado up to lintel level.

Electrification: Concealed copper wiring of approved quality with modular switches, sufficient electrical points as per architect's plan.

AMENITIES

Tremix concrete internal road with street lights

Compound wall as per architect's design

Impressive Society main entrance with security cabin & landscaping elements

24x7 Security with CCTV surveillance

Power back-up for common areas

Name plate to maintain the uniformity of the project

Pest control with piping system

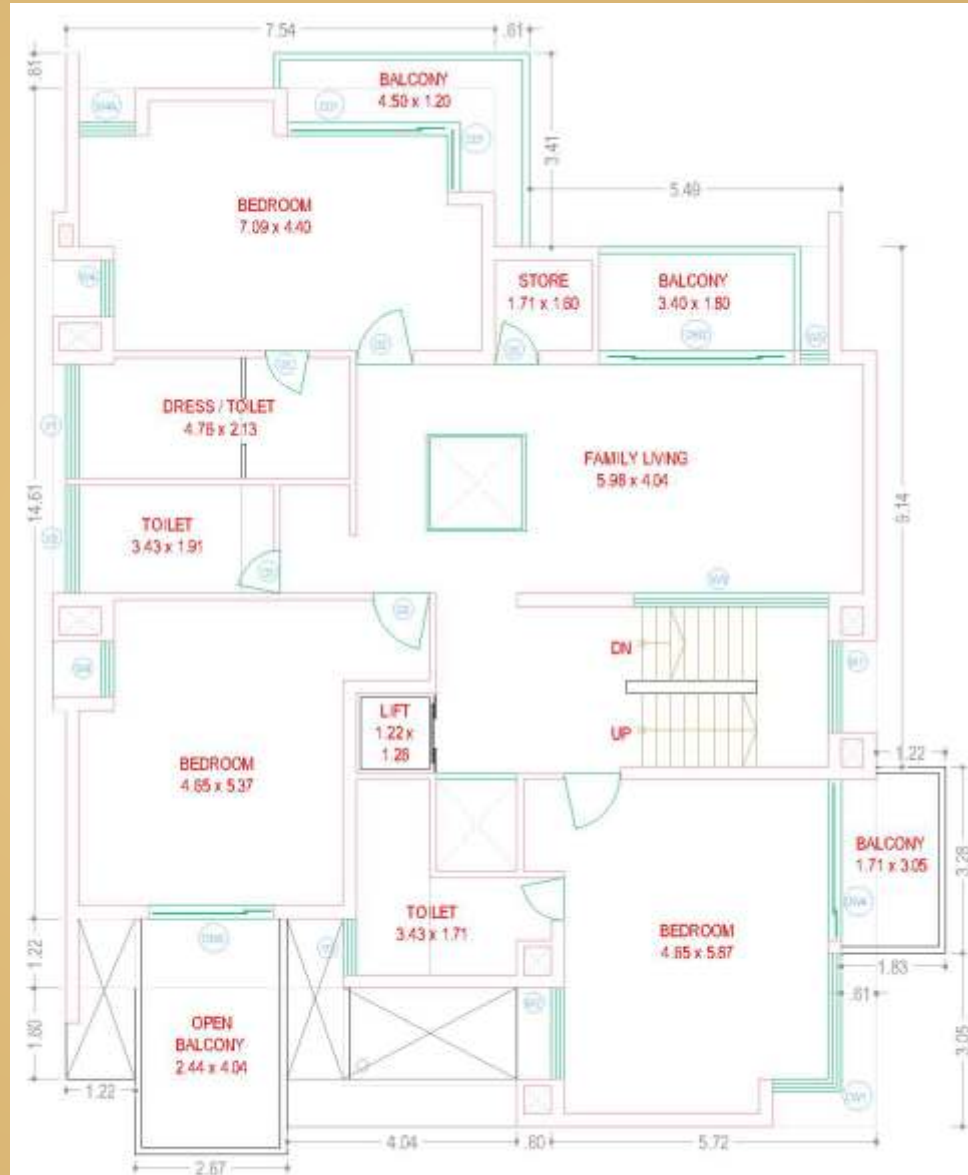
Underground cabling for Electricity, TV & Telephone for a wire-free look

Individual Bore-well water supply with water softener & Pressure Pump

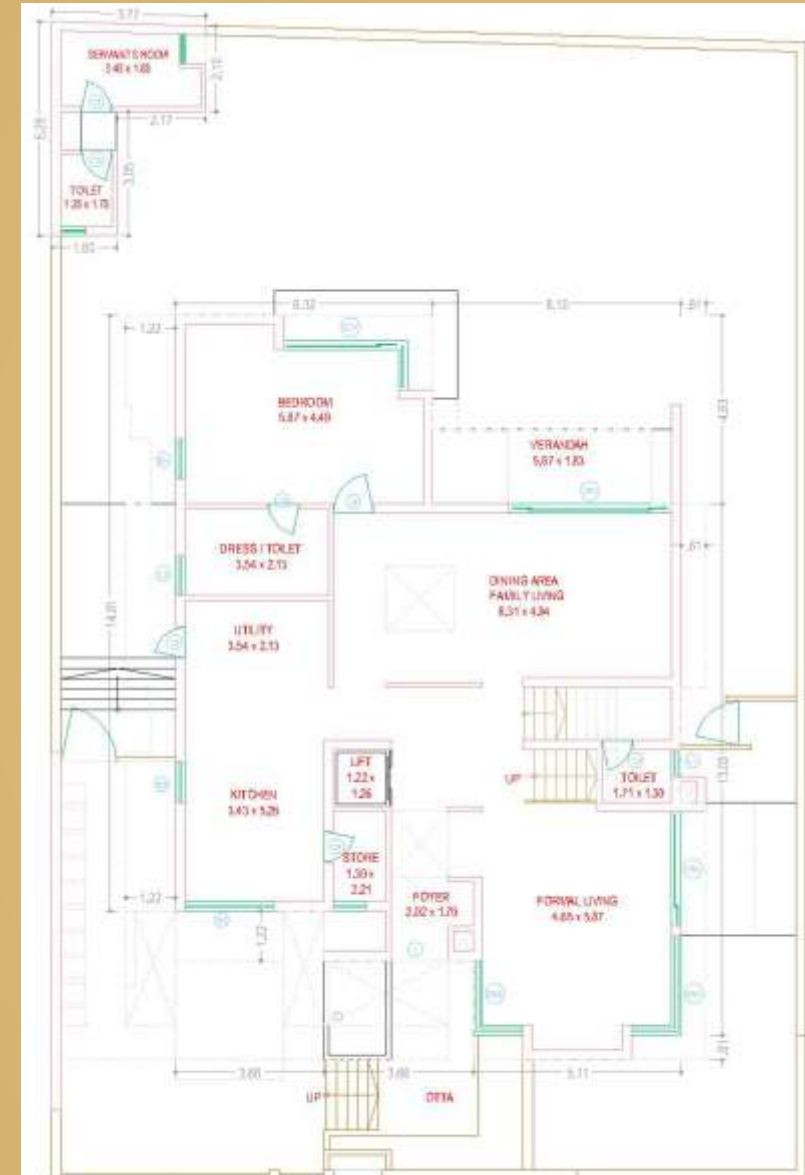
Club House



Type B



TYPE :- B
FIRST FLOOR PLAN



TYPE :- B
GROUND FLOOR PLAN

A creator that Sets no limit

Marked by distinction in every aspect of development ideals, our forte is the mastery in creating residences of unimaginable prestige reserved for the exclusive few. Exemplifying supreme quality in designs and craftsmanship, every project is fused with status elevating characteristics.

Surpassing benchmarks through ingenious architectural masterpieces, we at Neptune Realty Group have created projects very distinct and thus highly sought-after.

Where living is harmonized between the perfect resonance of utmost luxury, unprecedented serenity and immense convenience, simply put...everything is made in the best for your valued ownership!



NEPTUNE TRINITY



AVALONS GREENWOODS



VERONA GREENWOODS



NEPTUNE GLOBAL



GREENWOODS



ANTICA GREENWOODS



ANTICA GREENWOODS

