

SUBH DARSHAN GREENS

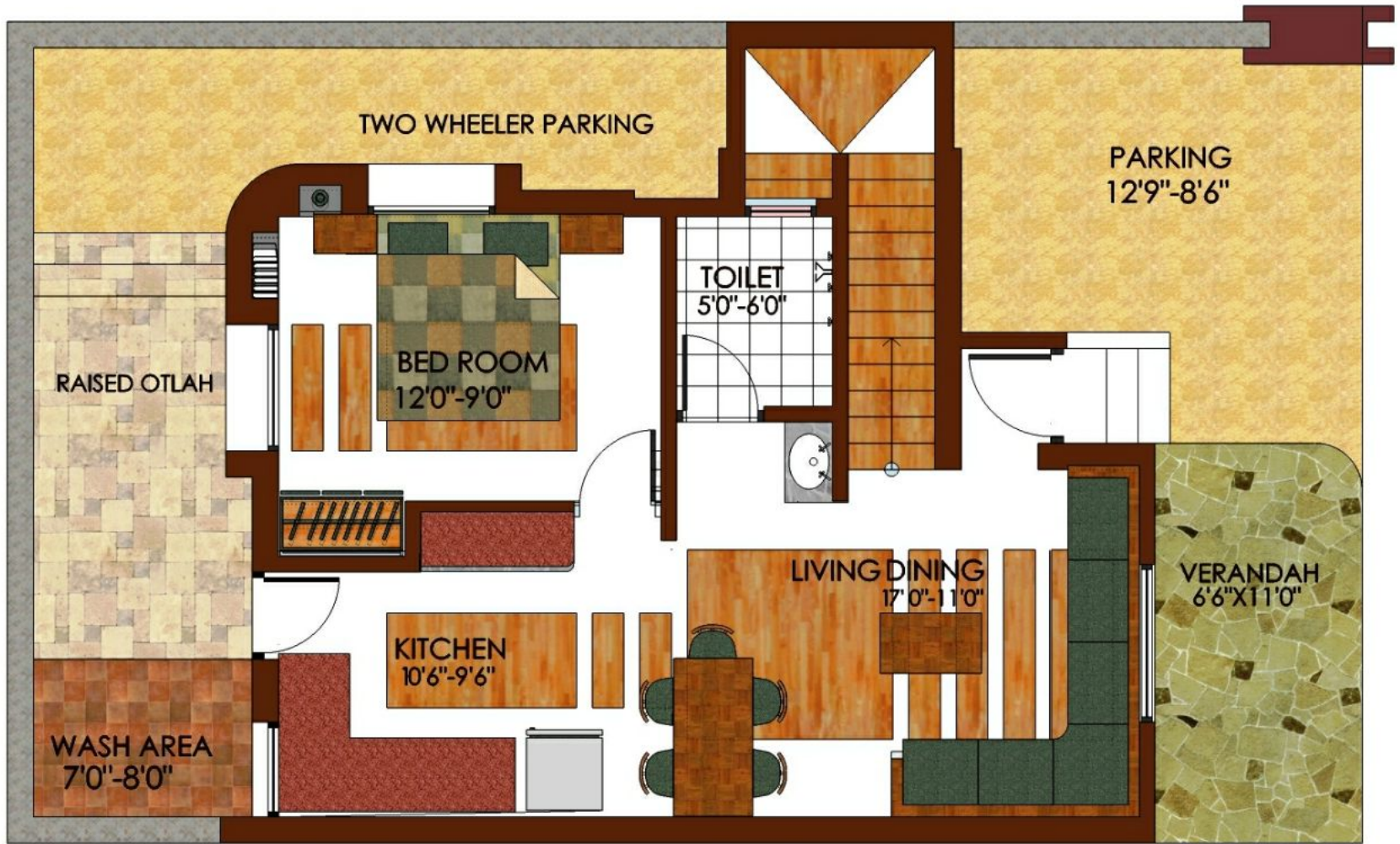
AT VILLAGE HANUMANPURA TALUKA
VAGHODIA DISTRICT VADODARA
R.S NO. 42,43,44 BLOCK NO. 20

A SCHEME BY RENOWNED DEVELOPER



ONE B. H. K. TENAMENT

Heavenly Living





FRONT

GROUND FLOOR

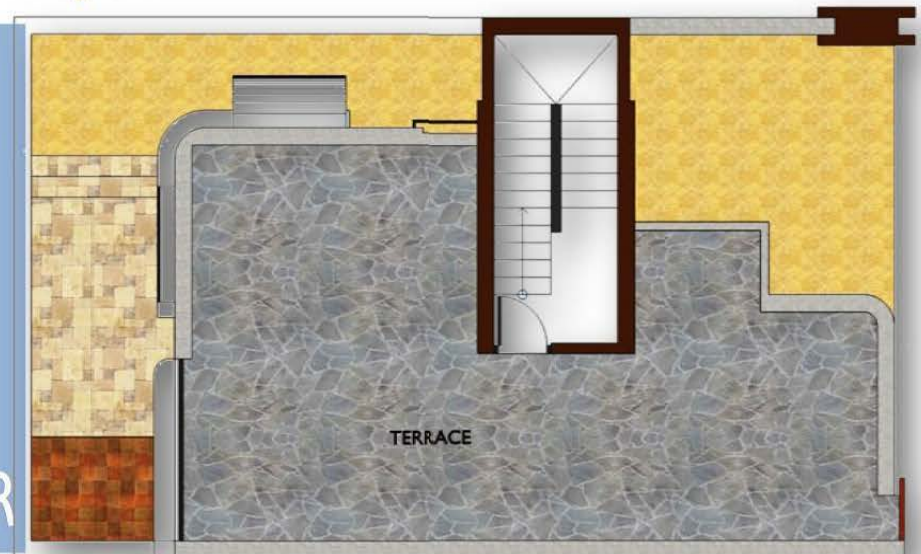


TOTAL CARPET AREA = 495.00 SQ.FTS

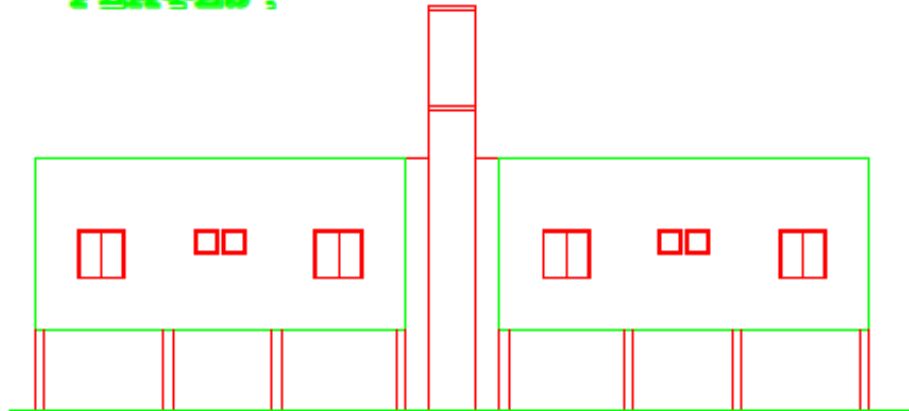


BACK

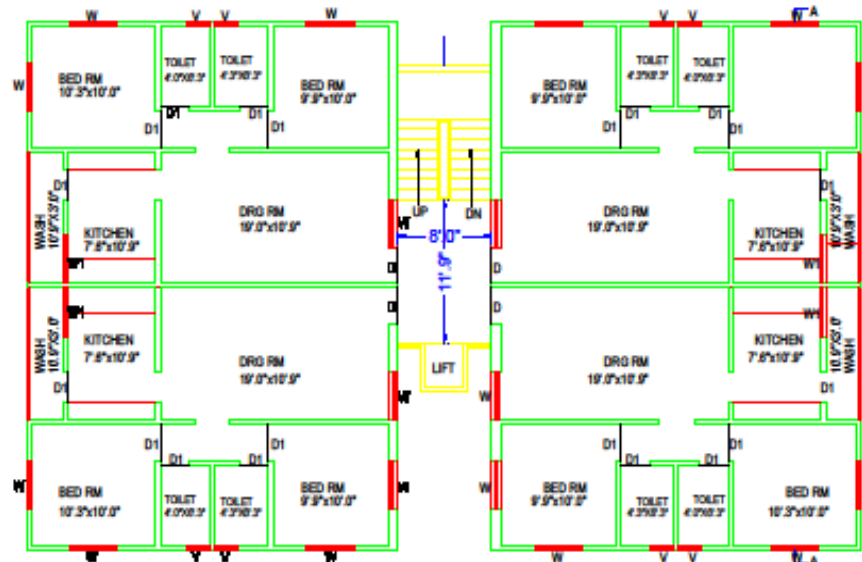
TERRACE FLOOR



SUBH DARSHAN GREENS FLATES :




FRONT VIEW



FIRST FLOOR PLAN

AT TIKRI LAKE HANUMANPURA VADADORA



LAY OUT PLAN 

SUBH DARSHAN GREENS


TO WARDHANA ROAD

TO MT WIDE ROAD

TO AMER ROAD

WATER TANK



KEY PLAN
SCALE:1CM=36.40MT. 

SPECIFICATIONS

- TYPE OF CONSTRUCTION=load bearing type Ground+One
- Floor with compound wall without gate.
- Duly paved in Parking aswell as in backside raised otah with wash area made out of cobah stone.
- FLOORING=vitrified tile
- WALLS=smooth plaster with water soluble paint
- DOORS=stone frames with flushdoor
- WINDOWS=aluminium powdercoated with 4mm.tinted glass without grills
- KITCHEN PLAT FORM=granite with dado up to lintel level above platform
- TOILETS=glazed tile dado up to lintel height
- HARD WARES=isl marked chromium finish
- WATER TAPS AND FLUSH COCKS=ISI make chromium finish
- ELECTRICAL WIRES, SWITCHES & M.G.B.S =standard ISI make