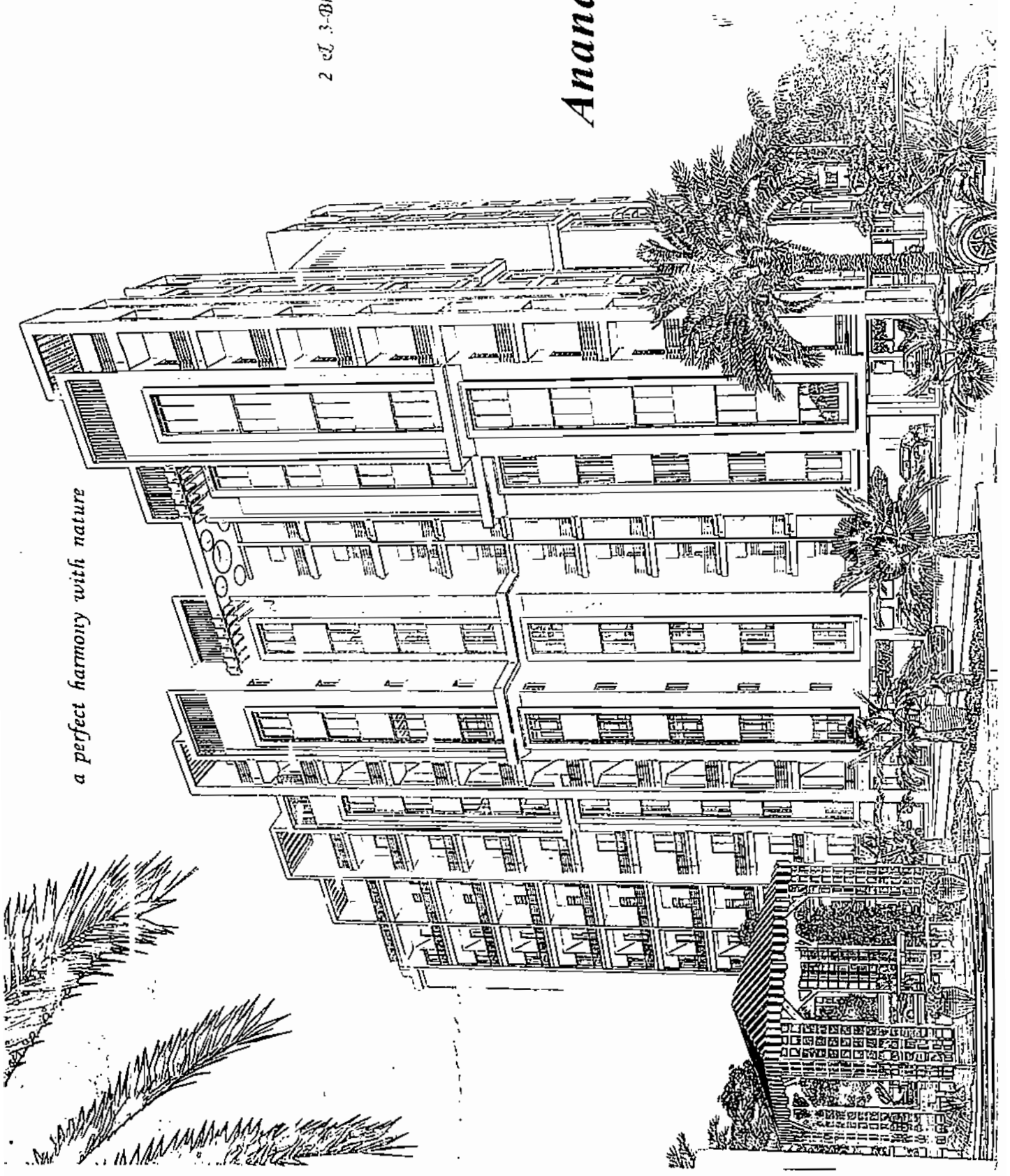


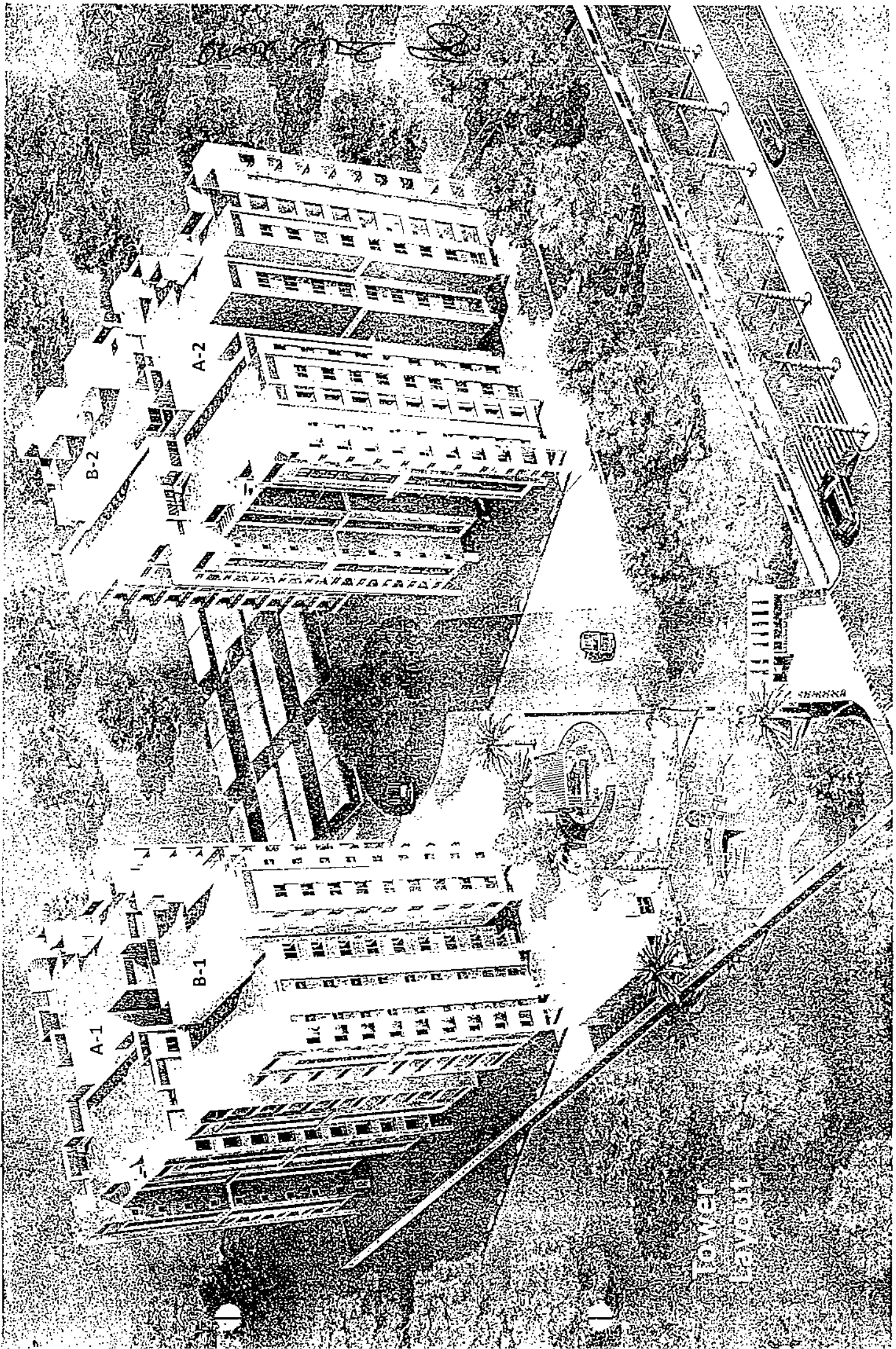
2014 2015

2 & 3-Bed Luxurious Flats

Anand Garden

a perfect harmony with nature

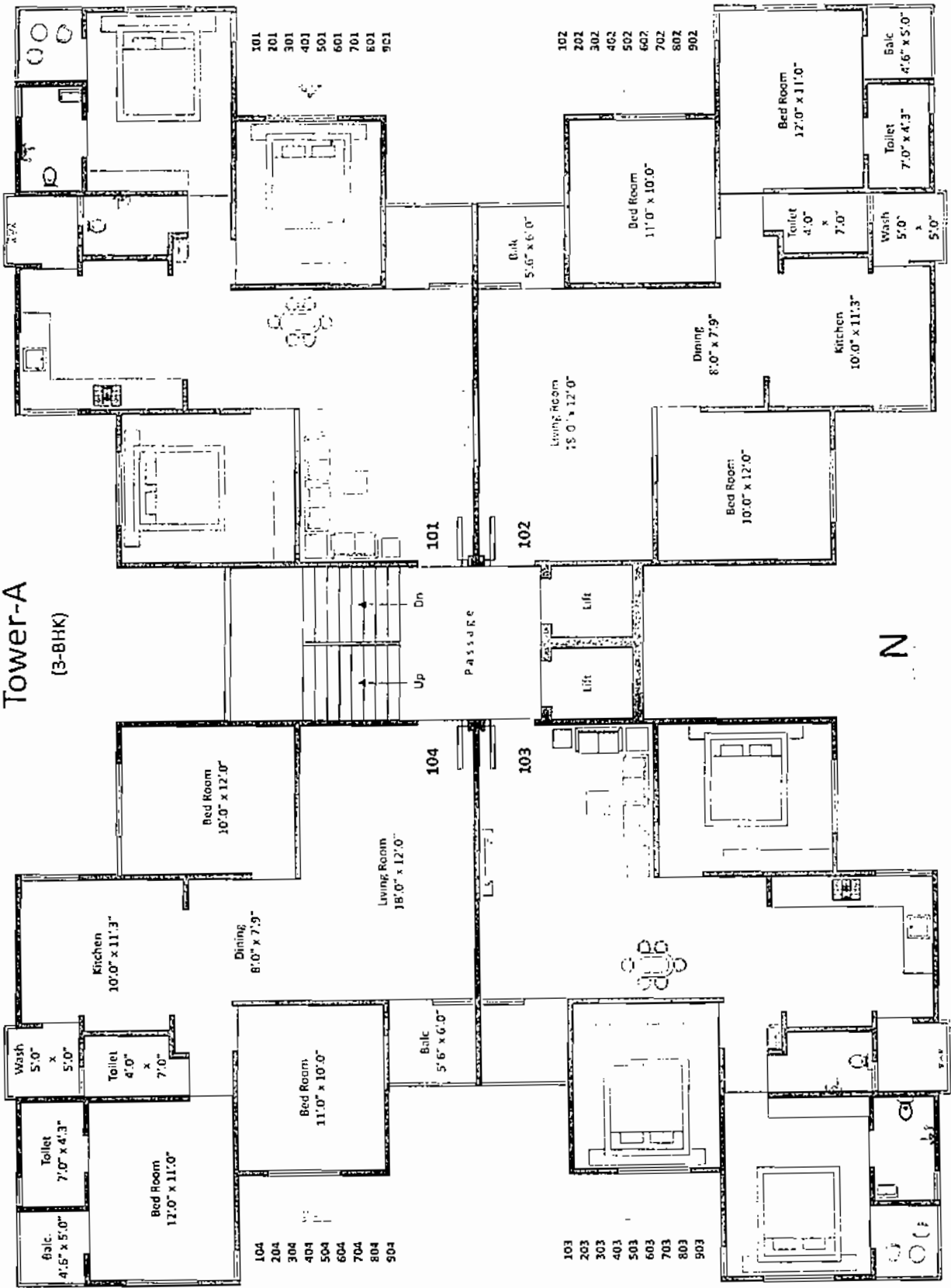




TOWER
LAYOUT

Handwritten signature or initials at the top of the page.

Tower-A (3-BHK)



N

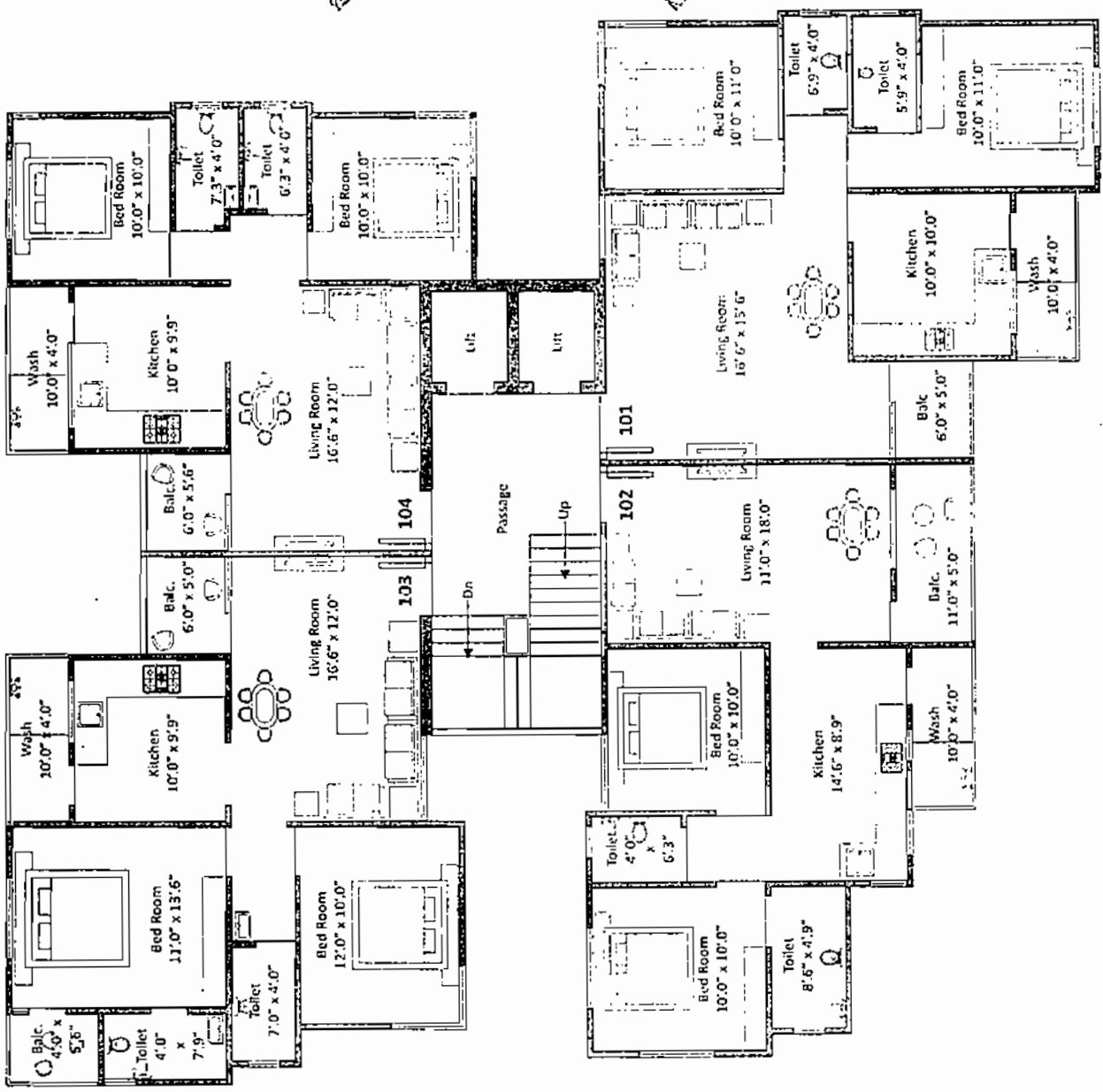
Bill Riehe

Tower-B
(2-BHK)



- 104
- 204
- 304
- 404
- 504
- 604
- 704
- 804
- 904

- 101
- 201
- 301
- 401
- 501
- 601
- 701
- 801
- 901



- 103
- 203
- 303
- 403
- 503
- 603
- 703
- 803
- 903

- 102
- 202
- 302
- 402
- 502
- 602
- 702
- 802
- 902

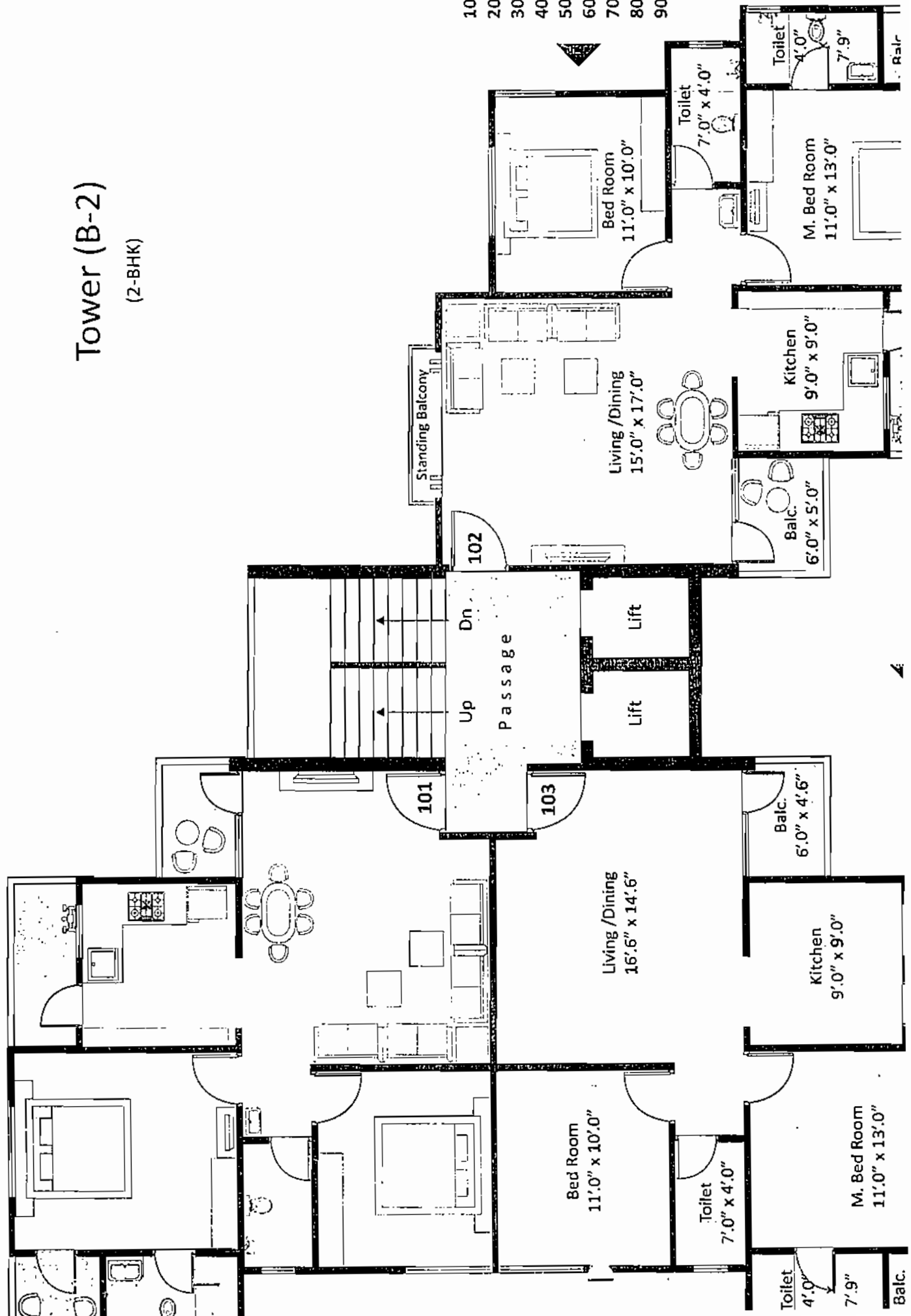


Tower (B-2)

(2-BHK)

Handwritten signature and date: 21/2/2014

- 102
- 202
- 302
- 402
- 502
- 602
- 702
- 802
- 902



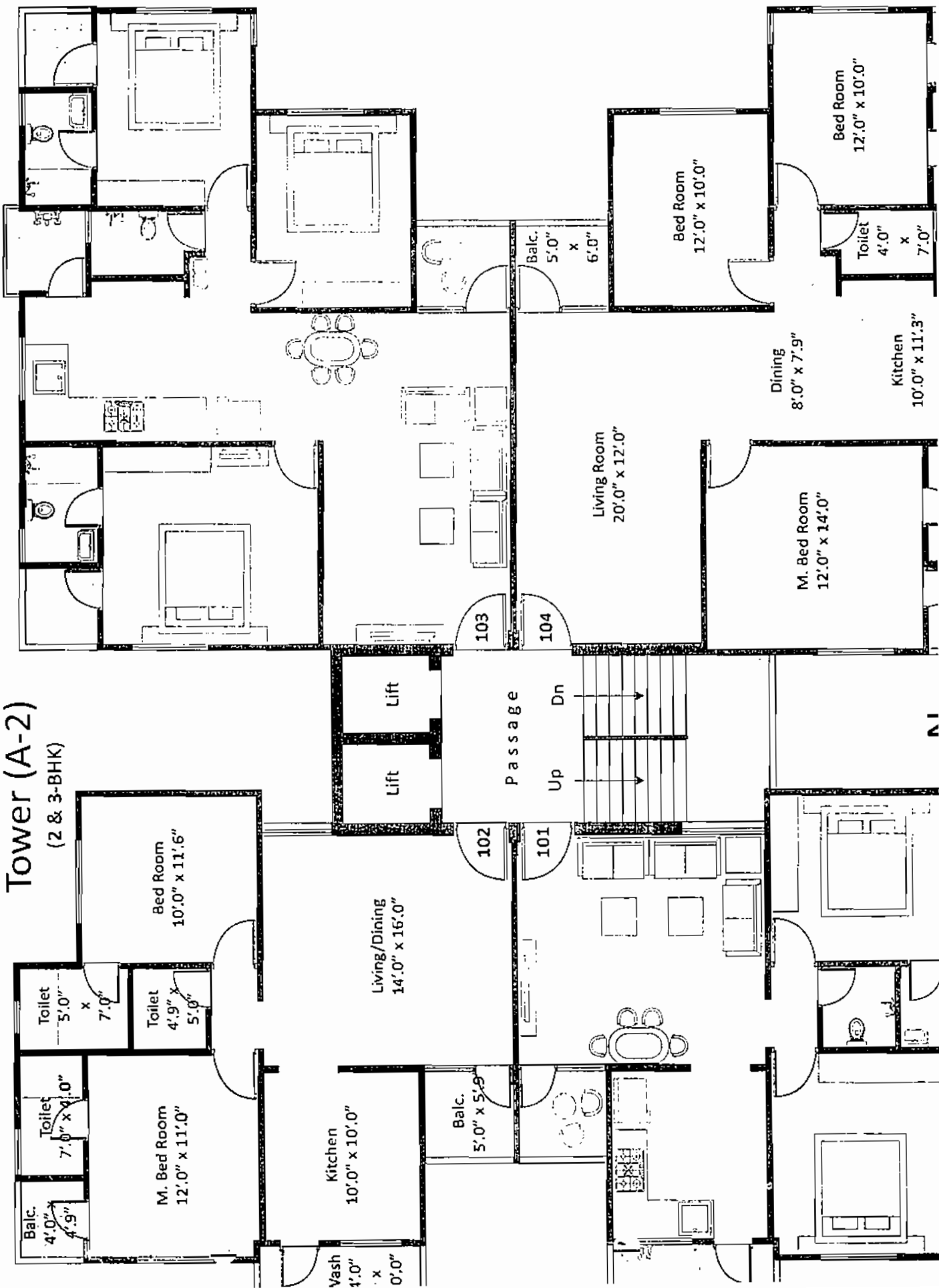
Unit 2 2107W

Tower (A-2)

(2 & 3-BHK)

- 103
- 203
- 303
- 403
- 503
- 603
- 703
- 803
- 903

- 104
- 204
- 304
- 404
- 504
- 604
- 704
- 804
- 904



- Specifications -

Structure :

Earthquake resistant RCC frame structure as per structure design.

Flooring :

Vitrified granamsite flooring in all rooms.

Doors :

Elegant entrance door & Internal doors of wooden frame with flush door & paint finish

Windows :

Powder coating Aluminum windows & Reflective glass with marble frame & safety grills.

Kitchen :

Granite platform with SS Sink & branded wall tiles upto lintel level.

Bathroom :

Designer tiles upto Top level with standard quality C.P. Fittings.

Finishing :

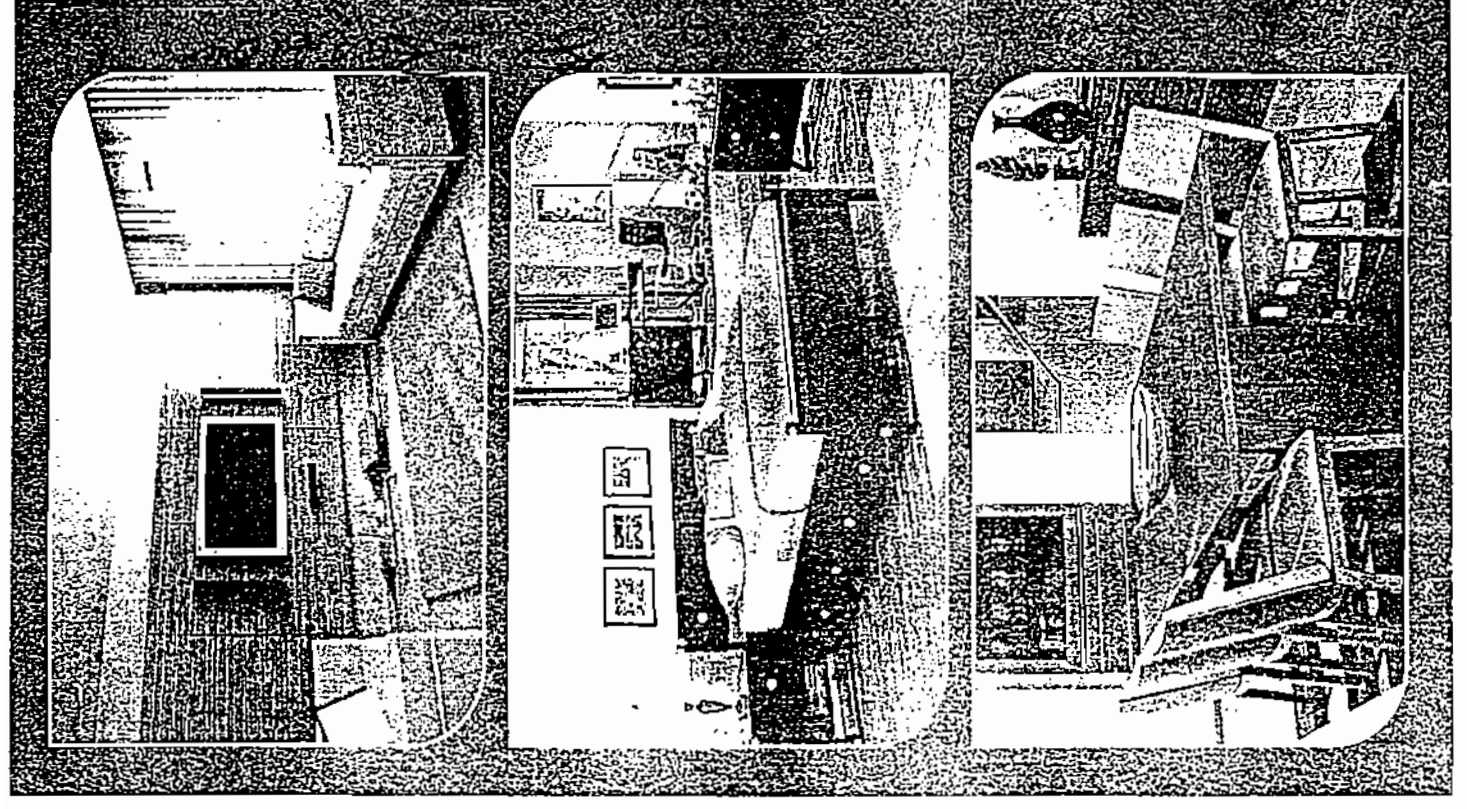
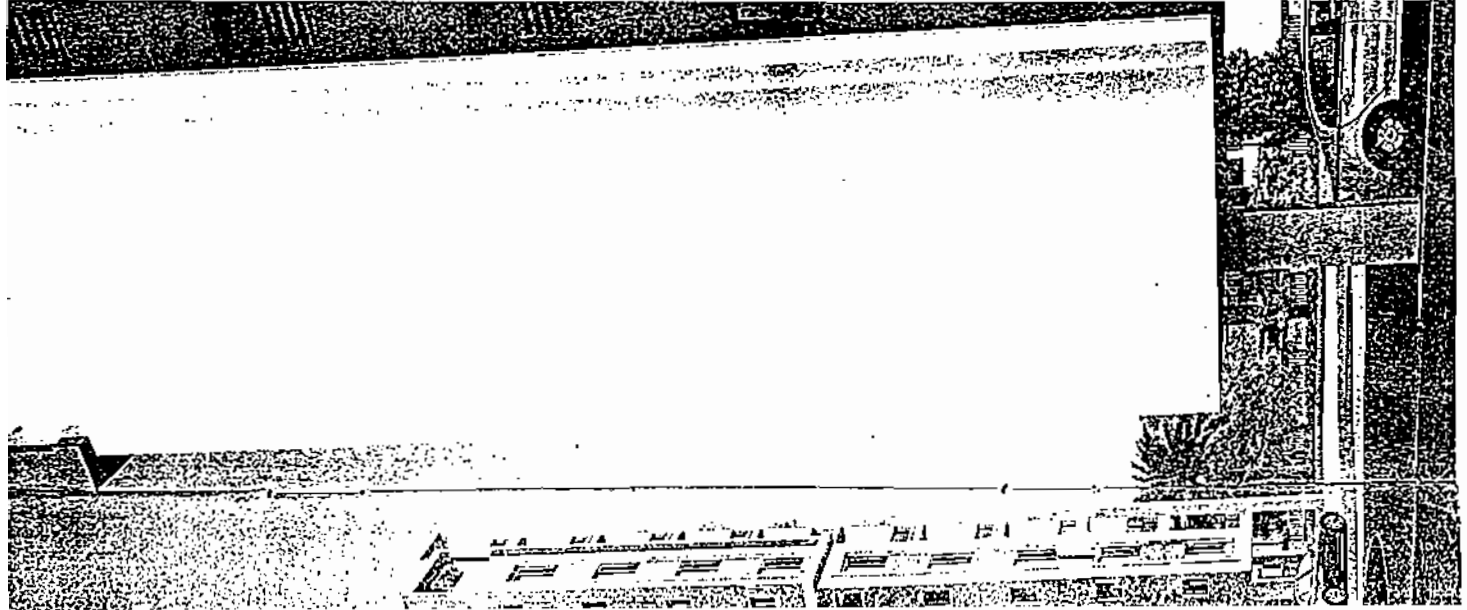
Internal smooth plaster with putty & External weather proof paint

Electrification :

Concealed ISI mark copper wiring, AC Point in master bedroom, Good quality modular switches.

Terrace :

Brick bed water proofing treatment



Dr. J. H. Miller