



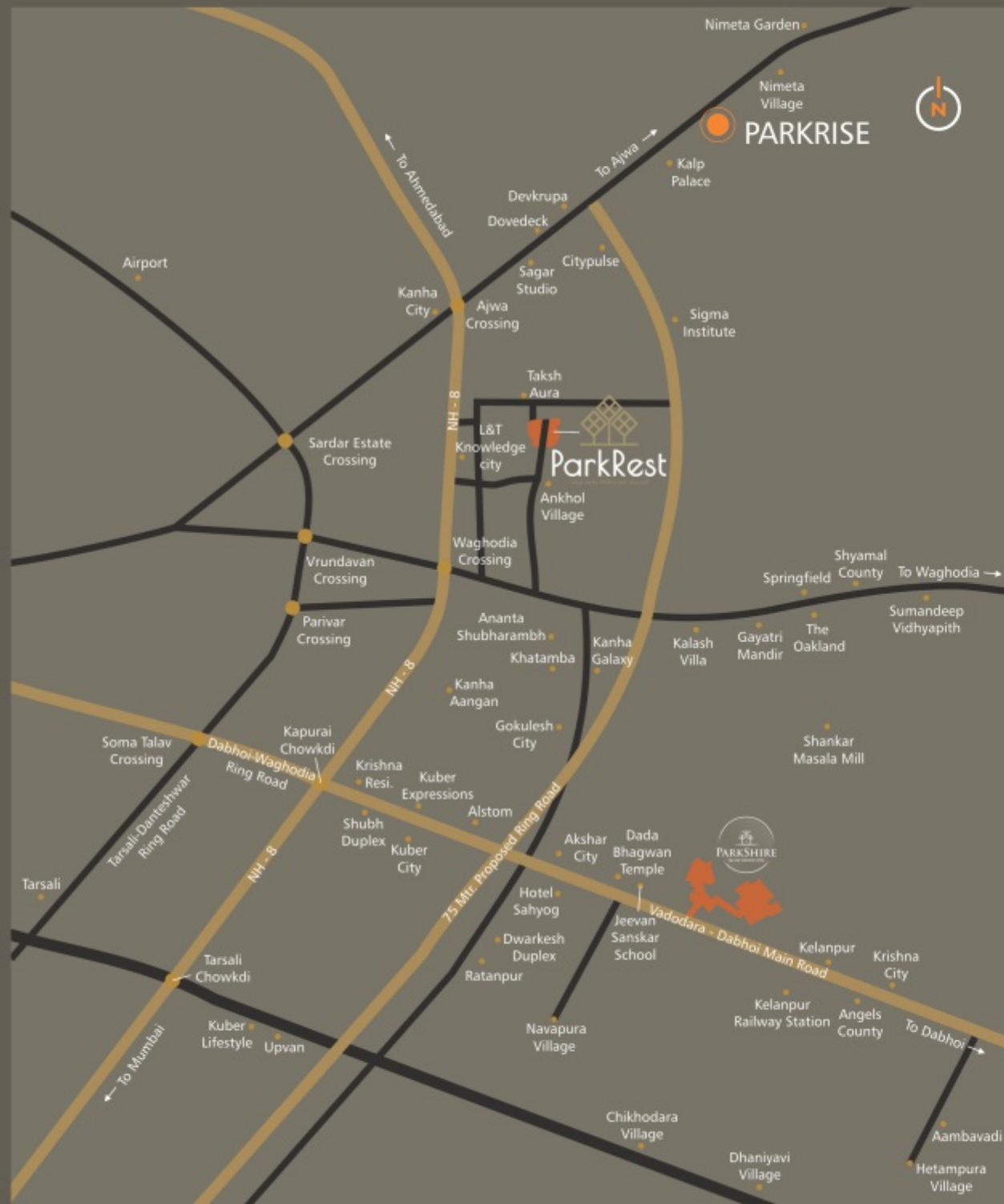
Developers
SHASHWAT INFRASPACE

ParkRest - Opp. Taksh Aura, Adjoining L&T Knowledge City, Near Ankhoh Village, Waghodia Road, Vadodara.
Call **099044 80003 - 097371 80003** | E : parkrest03@outlook.com | W : www.parkrest.in

Architect : UPNEXT ARCHITECTS | Structure : SIDHPURA & ASSOCIATES

Payment Mode : Booking Amount Rs. 1 Lac | Down-Payment within 1 month of Booking 25%
At Plinth Level 15% | At Ground Floor Slab Level 15% | At First Floor Slab Level 15%
At Plaster Level 15% | At Flooring Level 10% | 1 Month before taking Possession 05%

We Request: (1) Possession will be given after one month of settlement of accounts. (2) Extra work will be executed after receipt of full advance payment. (3) Stamp Duty, Registration Charge, GST or any new Central Govt., State Govt., VUDA Taxes, if applicable shall have to be borne by the client. (4) Continuous default payments leads to cancellation. (5) Architect/Developers shall have the rights to change or revise the scheme or any details herein and any change or revision will be binding to all. (6) In case of delay in Light connection by authority, developers will not be responsible. (7) All dimensions are indicative and actual dimensions in each room might vary (8) Plot area shown in list is per site condition and may vary. (9) Common compound wall of individual unit will be as per architect's design (10) Refund (exclude tax) shall be given in case of cancellation of the booking within 7 days. The payment shall be refunded only after same premises is re-booked and payment for the same is received from the other customer. We shall deduct a minimum administrative charge of Rs. 50,000. (11) Any plans, specification or information in this brochure cannot form part of an offer, contract or agreement. (12) All members shall have to essentially be the part of the society formed by the association members and shall have to abide by the society bylaws. (13) After virtual completion of the work all the repair and the maintenance like drainage, watchman salary, electricity bill etc. shall be borne by society members. (14) Members of society are not allowed to change elevation of duplex in any circumstances. This brochure shall not be treated as legal document; it is only for the purpose of information. **(15) Prime Location Charges extra.**



contig@ 992529 4417









Leisure Amenities

Enjoy exclusive leisure amenities with like-minded affluent residents !

- GYMNASIUM
- SWIMMING POOL
- VOLLEYBALL COURT
- LARGE LANDSCAPE GARDEN
- SENIOR CITIZEN DECK
- FAST FOOD CORNER
- CONVENIENCE STORE
- GAZEBO WITH SITTING
- CAFE

Villa Features



- 
RCC STRUCTURE
 Earthquake resistant **RCC frame structure** as per structural engineer's design
- 
FLOORING
 Double charged **800x800 Vitrified Tiles** in Lounge, Dining & kitchen. 605x605 Vitrified Tiles in all Bedrooms. Anti-skid Vitrified tiles of reputed make in bathrooms and balconies.
- 
ELECTRIFICATION
 Concealed copper wiring of approved quality. **Branded premium quality modular switches** with sufficient electrical point as per architect's plan.
- 
BATHROOMS & TOILETS
 Designer bathrooms with Premium Glazed Tiles upto Door level. **Premium branded Plumbing fixture and vessels.**



PAINT & FINISH

Interiors : Smooth plaster with Wall Putty & Primer
 Exterior : Double coat plaster with Water proof and fungal resistant pain (Asian Paint or equivalent)

KITCHEN

Granite counter with Stainless Steel Sink and tiling upto the door/window level on walls.

DOOR & WINDOWS

Doors : Elegant wooden entrance Door. Internal Flush doors.
 Windows : Colour anodized aluminium section windows with reflective glass of standard quality.

TERRACE

Open terrace finished with chemical water proofing and china mosaic flooring/tiles.

Layout Plan



Type - A (3 BHK)

No.	Area	No.	Area	No.	Area	No.	Area	No.	Area
97	1151.41	120	1303.72	143	917.62	292	867.57	315	1154.53
98	901.79	121	1761.94	144	876.82	293	867.57	316	1087.26
99	928.38	122	867.57	145	916.97	294	867.57	317	1017.83
100	941.62	123	867.57	146	1258.51	295	867.57	318	959.17
101	955.94	124	867.57	273	1567.65	296	867.57	319	1069.50
102	968.21	125	829.03	274	854.54	297	867.57	320	1281.44
103	981.45	126	829.03	275	854.54	298	867.57	321	1202.54
104	994.69	127	867.57	276	867.57	299	867.57	322	1123.64
105	1007.93	128	867.57	277	867.57	300	829.03	323	1045.92
106	1021.27	129	867.57	278	867.57	301	829.03	324	1914.57
107	1034.51	130	1718.56	279	867.57	302	867.57		
108	1047.75	131	1487.03	280	867.57	303	867.57		
109	1060.99	132	854.00	281	867.57	304	867.57		
110	1026.23	133	867.57	282	867.57	305	867.57		
111	917.73	134	867.57	283	867.57	306	867.57		
112	973.37	135	829.03	284	867.57	307	867.57		
113	986.72	136	829.03	285	867.57	308	867.57		
114	1492.63	137	867.57	286	867.57	309	867.57		
115	1283.16	138	867.57	287	867.57	310	867.57		
116	1131.17	139	829.03	288	1434.50	311	867.57		
117	1076.82	140	1279.07	289	1162.07	312	1002.98		
118	1005.56	141	1957.19	290	867.57	313	1890.46		
119	936.02	142	917.62	291	867.57	314	1222.45		

Type - B (4 BHK)

No.	Area	No.	Area	No.	Area	No.	Area
35	1452.48	68	1179.61	206	867.57	327	867.57
36	867.57	69	1102.86	207	867.57	328	867.57
37	867.57	70	1026.23	208	867.57	329	867.57
38	867.57	71	1670.12	209	867.57	330	867.57
39	867.57	72	1452.15	210	867.57	331	867.57
40	867.57	73	867.57	211	867.57	332	867.57
41	867.57	74	867.57	212	1136.56	333	867.57
42	829.03	75	867.57	249	829.03	334	867.57
43	829.03	76	867.57	250	829.03	335	867.57
44	867.57	77	867.57	251	829.03	336	867.57
45	867.57	78	867.57	252	829.03	337	867.57
46	867.57	79	867.57	253	829.03	338	867.57
47	867.57	80	867.57	254	829.03	339	867.57
48	867.57	81	1424.17	255	829.03	340	830.97
49	867.57	82	2080.33	256	829.03	341	830.97
50	1763.01	83	867.57	257	829.03	342	867.57
51	1137.74	84	867.57	258	829.03	343	867.57
52	867.57	85	867.57	259	829.03	344	867.57
53	867.57	86	867.57	260	829.03	345	867.57
54	867.57	87	867.57	261	1101.46	346	867.57
55	867.57	88	867.57	262	1147.75	347	867.57
56	867.57	89	867.57	263	1142.80	348	867.57
57	867.57	90	867.57	264	1137.74	349	867.57
58	829.03	91	1898.32	265	1132.68	350	867.57
59	829.03	92	922.35	266	1127.62	351	867.57
60	867.57	93	922.35	267	1122.67	352	867.57
61	867.57	94	922.35	268	1117.61	353	867.57
62	867.57	95	922.35	269	1112.55	354	867.57
63	867.57	96	922.35	270	1107.49	355	867.57
64	867.57	97	1102.54	271	1102.54	356	2049.12
65	867.57	98	1048.61	272	1048.61	357	1689.82
66	1435.47	99	867.57	325	2144.59	358	1289.94
67	1254.96	205	867.57	326	867.57	359	1289.94
						360	1689.82

Type - D

No.	Area
92	1479.06

Type - E

No.	Area
189	1592.73
190	985.65

Type - F

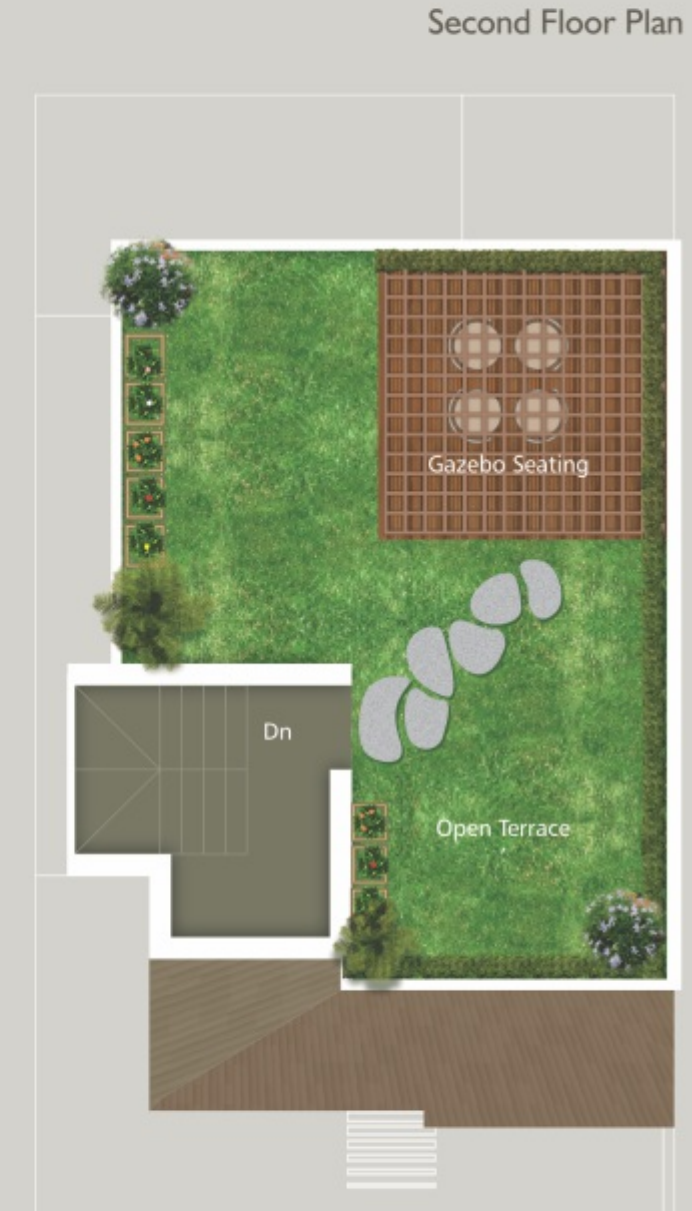
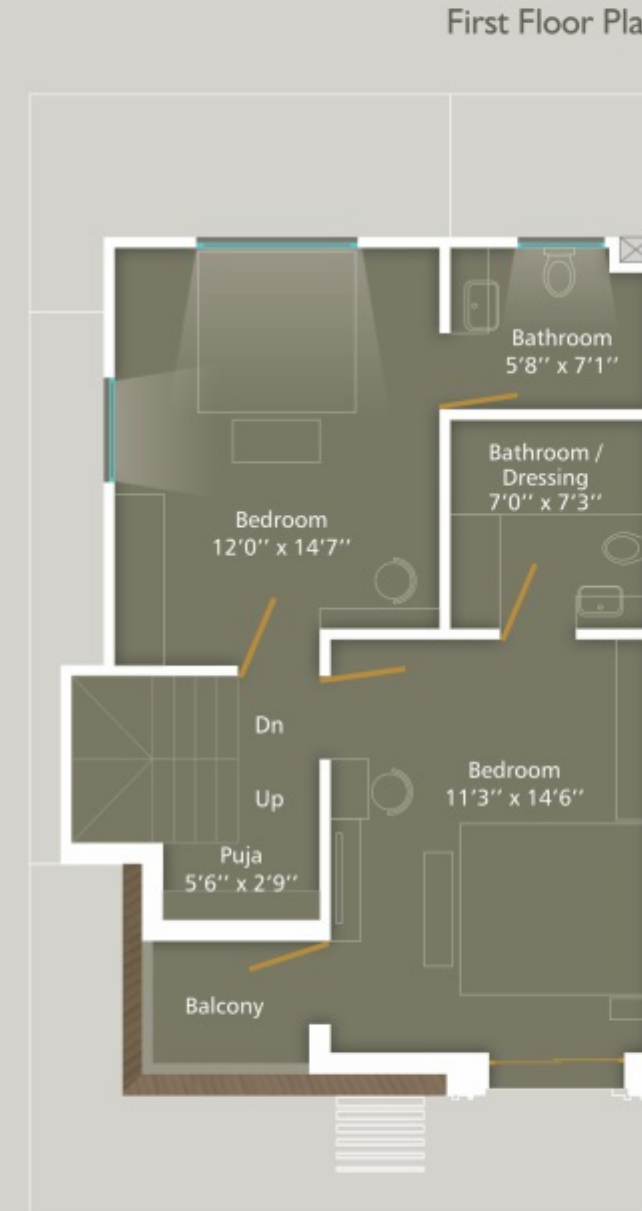
No.	Area
1	1783.36
2	1115.03


Type - C (4 BHK)

No.	Area	No.	Area	No.	Area
3	1120.09	175	943.02		
4	1125.25	176	943.02		
5	1130.42	177	943.02		
6	1135.48	178	943.02		
7	1140.65	179	943.02		
8	1145.70	180	943.02		
9	1133.33	181	943.02		
10	1138.49	182	943.02		
11	1143.66	183	943.02		
12	1148.83	184	943.02		
13	1153.89	185	943.02		
14	1159.05	186	943.02		
15	1164.11	187	943.02		
16	1169.22	188	1863.55		
17	1174.44	191	985.65		
18	2280.76	192	985.65		
19	1858.38	193	985.65		
20	943.24	194	985.65		
21	943.24	195	985.65		
22	943.24	196	985.65		
23	943.24	197	985.65		
24	943.24	198	985.65		
25	943.24	199	985.65		
26	943.24	200	985.65		
27	918.91	213	1319.86		
28	918.91	214	943.02		
29	918.91	215	943.02		
30	918.91	216	943.02		
31	918.91	217	943.02		
32	918.91	218	943.02		
33	918.91	219	943.02		
34	1502.10	220	943.02		
147	1643.43	221	943.02		
148	1159.70	222	943.02		
149	1157.33	223	943.02		
150	1152.38	224	943.02		
151	1147.43	225	943.02		
152	1142.48	226	943.02		
153	1137.52	227	943.02		
154	1132.57	228	943.02		
155	1127.73	229	943.02		
156	1122.78	230	943.02		
157	943.02	231	943.02		
158	943.02	232	943.02		
159	943.02	233	943.02		
160	943.02	234	943.02		
161	943.02	235	943.02		
162	943.02	236	943.02		
163	943.02	237	943.02		
164	943.02	238	943.02		
165	943.02	239	943.02		
166	1991.53	240	943.02		
167	1590.90	241	943.02		
168	943.02	242	943.02		
169	943.02	243	943.02		
170	943.02	244	943.02		
171	943.02	245	943.02		
172	943.02	246	943.02		
173	943.02	247	943.02		
174	943.02	248	943.02		



Villa Type - A (3 BHK)

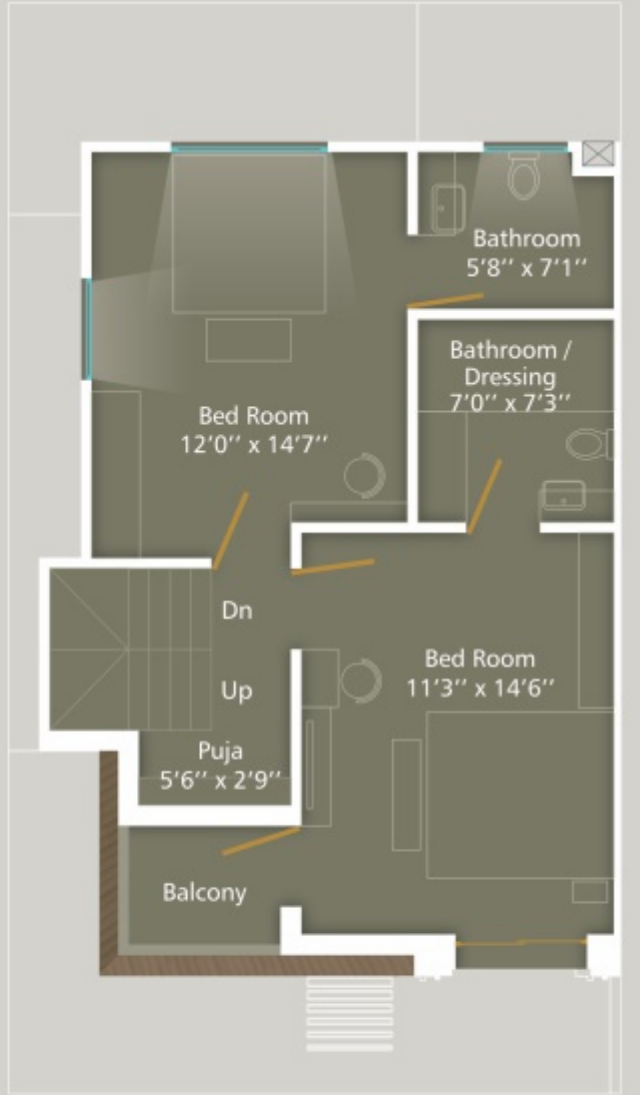


 Villa Type - B (4 BHK)

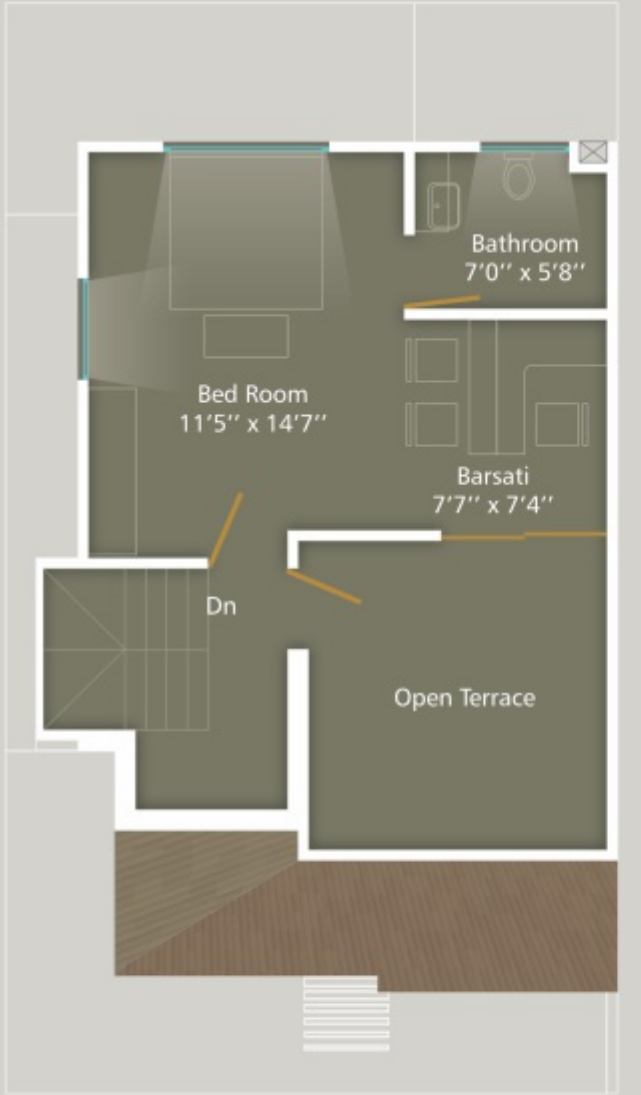
Ground Floor Plan




First Floor Plan



Second Floor Plan

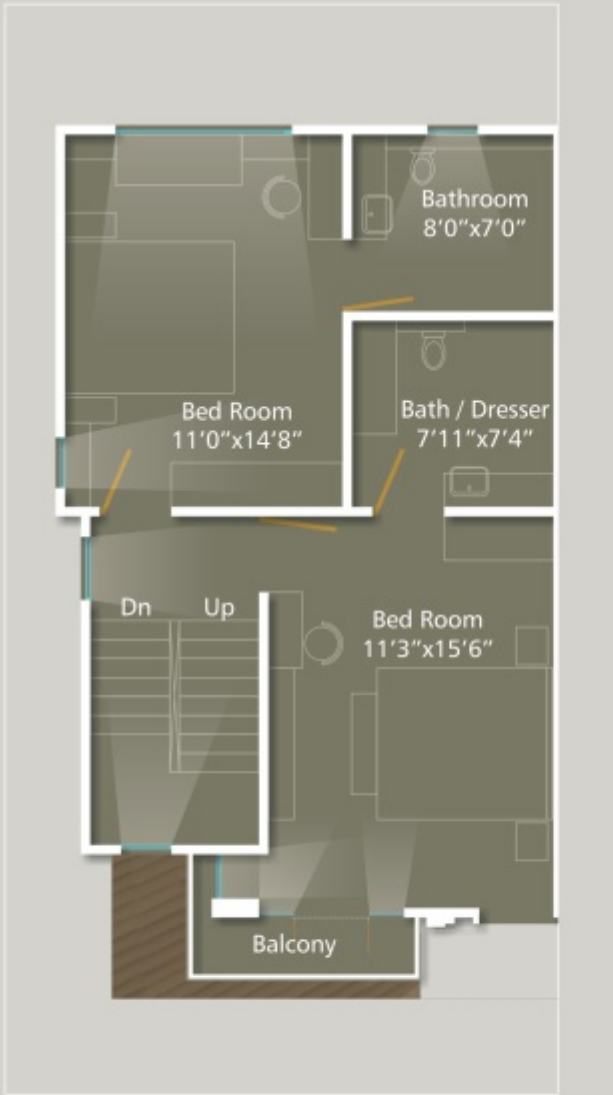


 Villa Type - C (4 BHK)

Ground Floor Plan



First Floor Plan



Second Floor Plan

