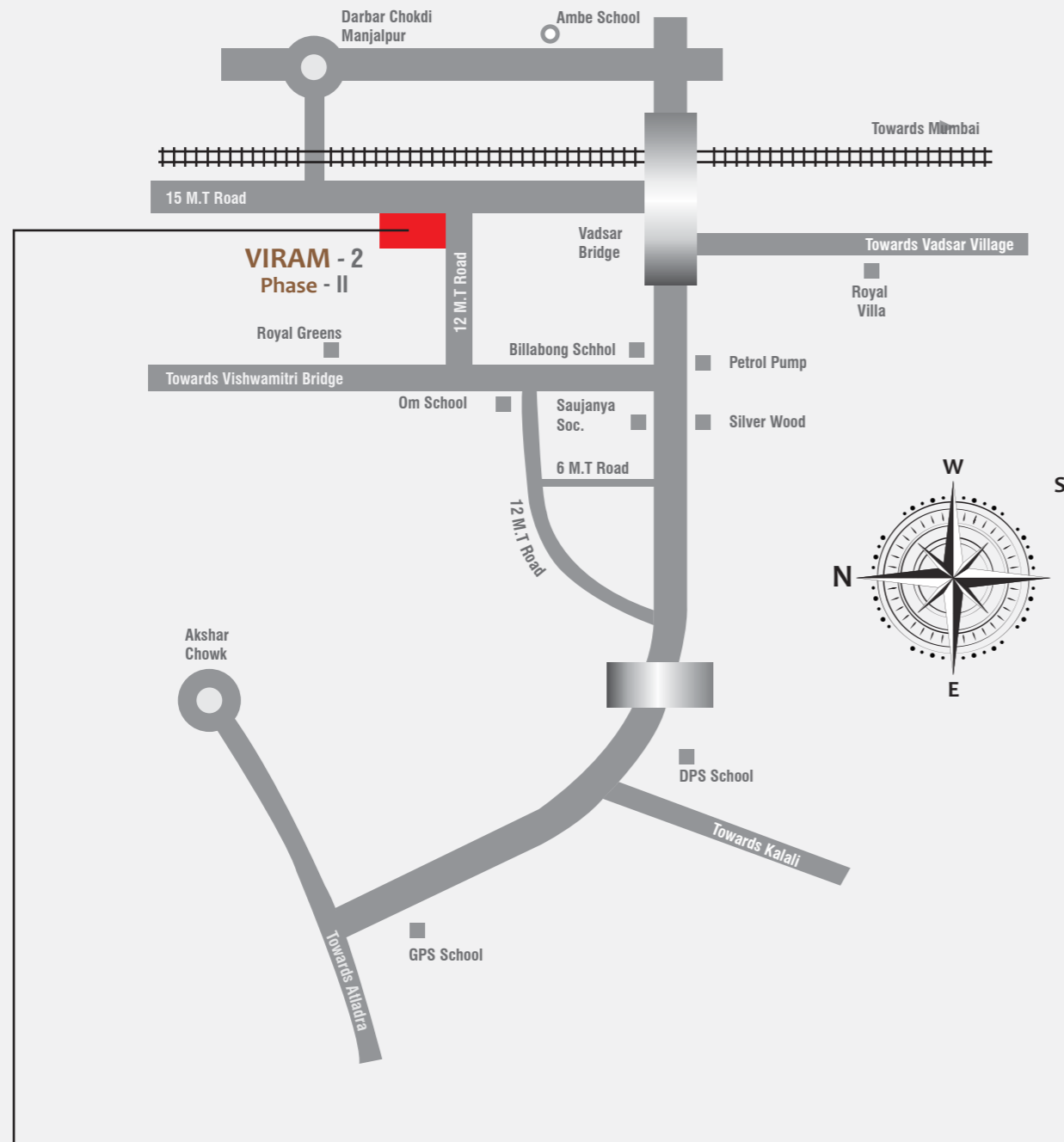


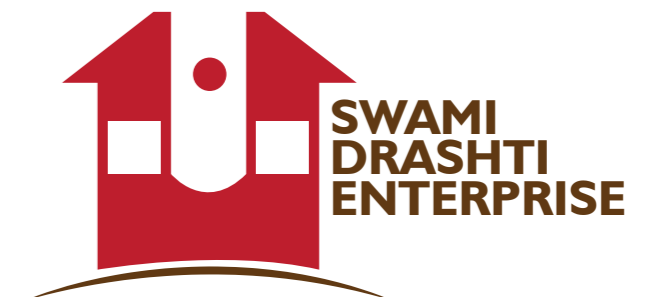
**Key Plan :**



**VIRAM - 2**  
**Phase - II**  
 2 BHK FLATS

**VIRAM - 2**  
**Phase - II**  
 2 BHK FLATS

Developer: Swami Drashti Enterprise  
 Architect : Anjali Associate  
 Site Address : B/h. Billabong School,  
 Nr. Narayan Farm, New Manjalpur, Vadodara.  
 Contact No.: 7487855014, 7487855015  
 E-mail : swami.drashti@gmail.com

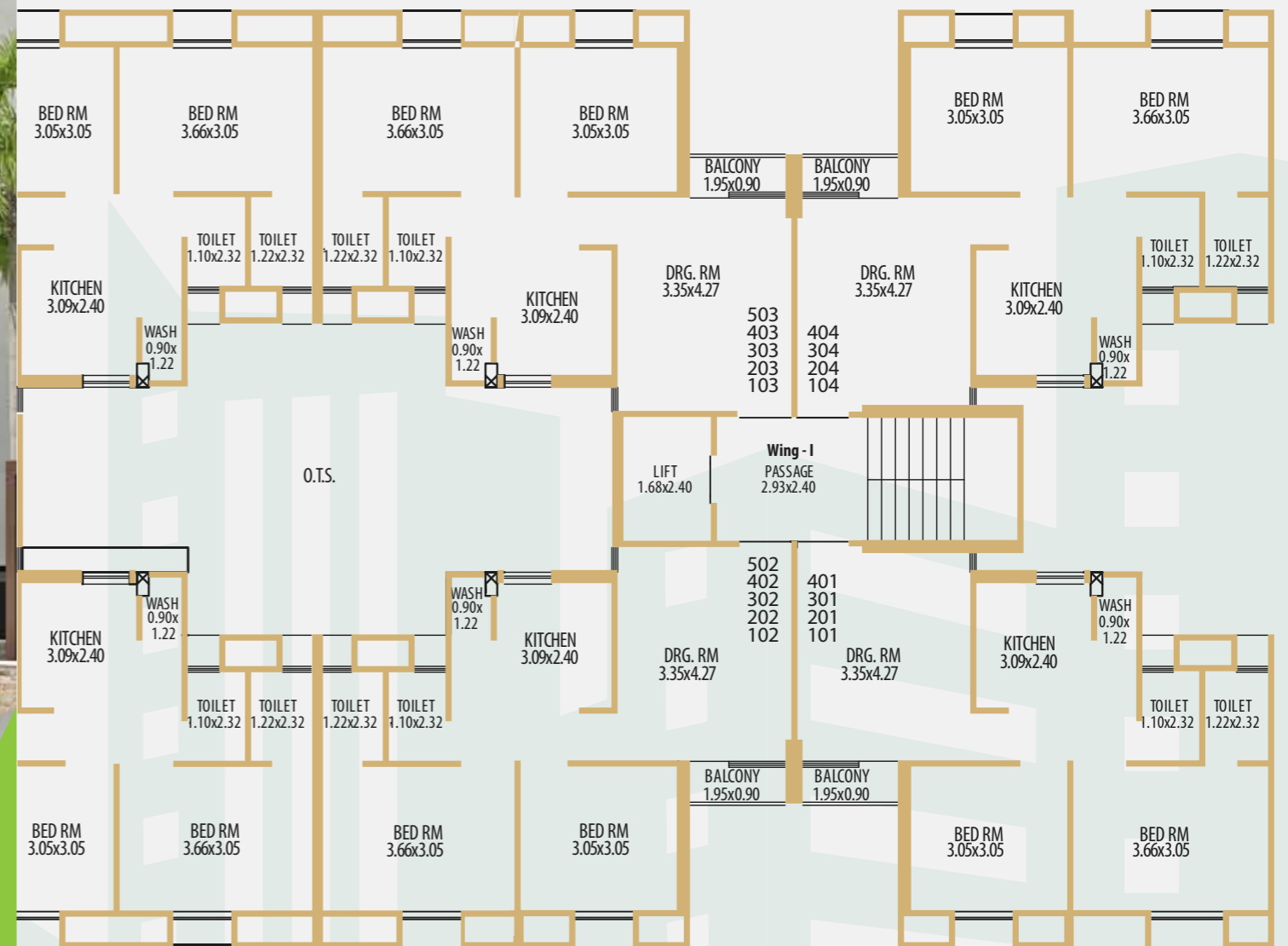




# 2 BHK FLATS

## Tower - 3 (WING - I & J)

### 1ST TO 5TH FLOOR PLAN



# VIRAM - 2

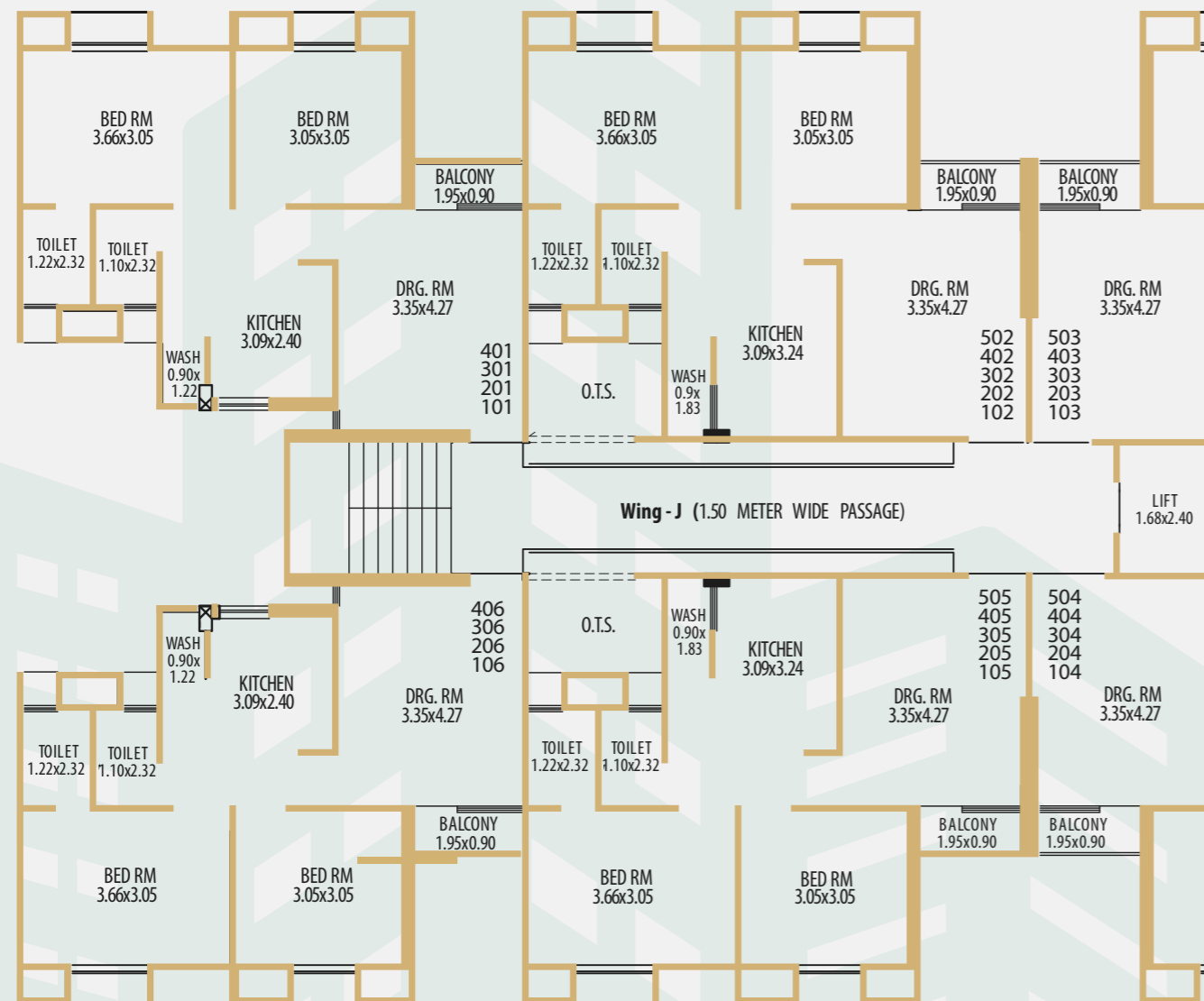
## Phase - II

### 2 BHK FLATS

# VIRAM - 2

## Phase - II

### 2 BHK FLATS



## Specification

### Finishing:

Internal wall with smooth plaster & External wall finish with double coat Plaster.

### Flooring:

Vitrified tiles flooring in all rooms.

### Doors:

Elegant entrance door & internal Flush doors with Stone frame.

### Windows:

Anodiz aluminium windows.

### Kitchen:

Granite platform with S.S. sink & premium branded wall tiles dedo up to lintel level.

### Bathroom:

Designer tiles up to lintel.

### Electrification:

Concealed ISI mark Copper wiring, A.C. point in Master Bedroom, good quality modular switches.

### Plumbing:

Standard concealed UPVC, CPVC & PVC plumbing.

### Paint:

Wall Putty finish over internal wall and weather paint of two coats in exteriors.



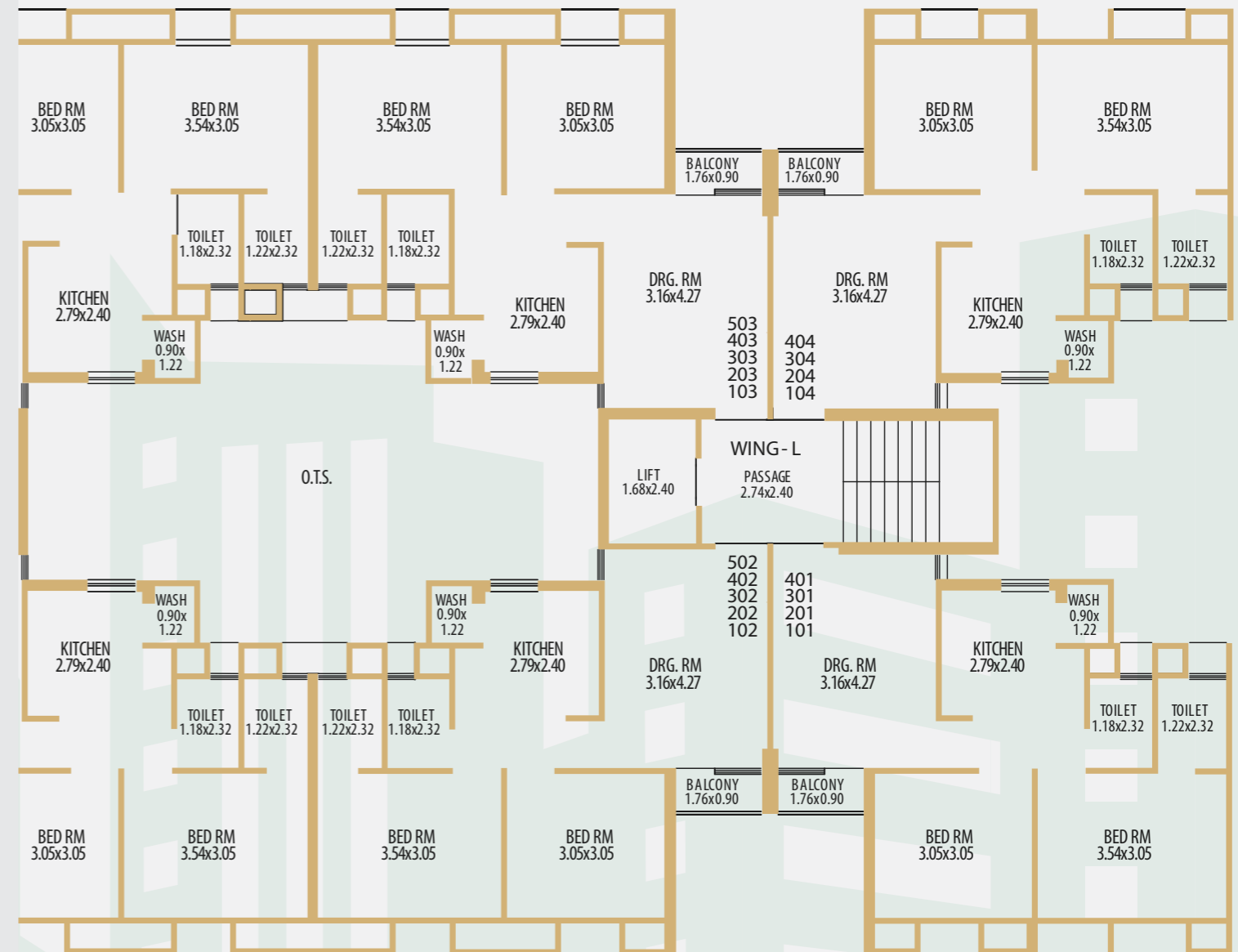
# Amenities



- 24 hours water supply
- Underground water tank
- 24 hours Security
- Enclosed Secure Campus
- Standard Quality Lift

## 2 BHK FLATS Tower - 2 (WING - K & L)

1ST TO 5TH FLOOR PLAN

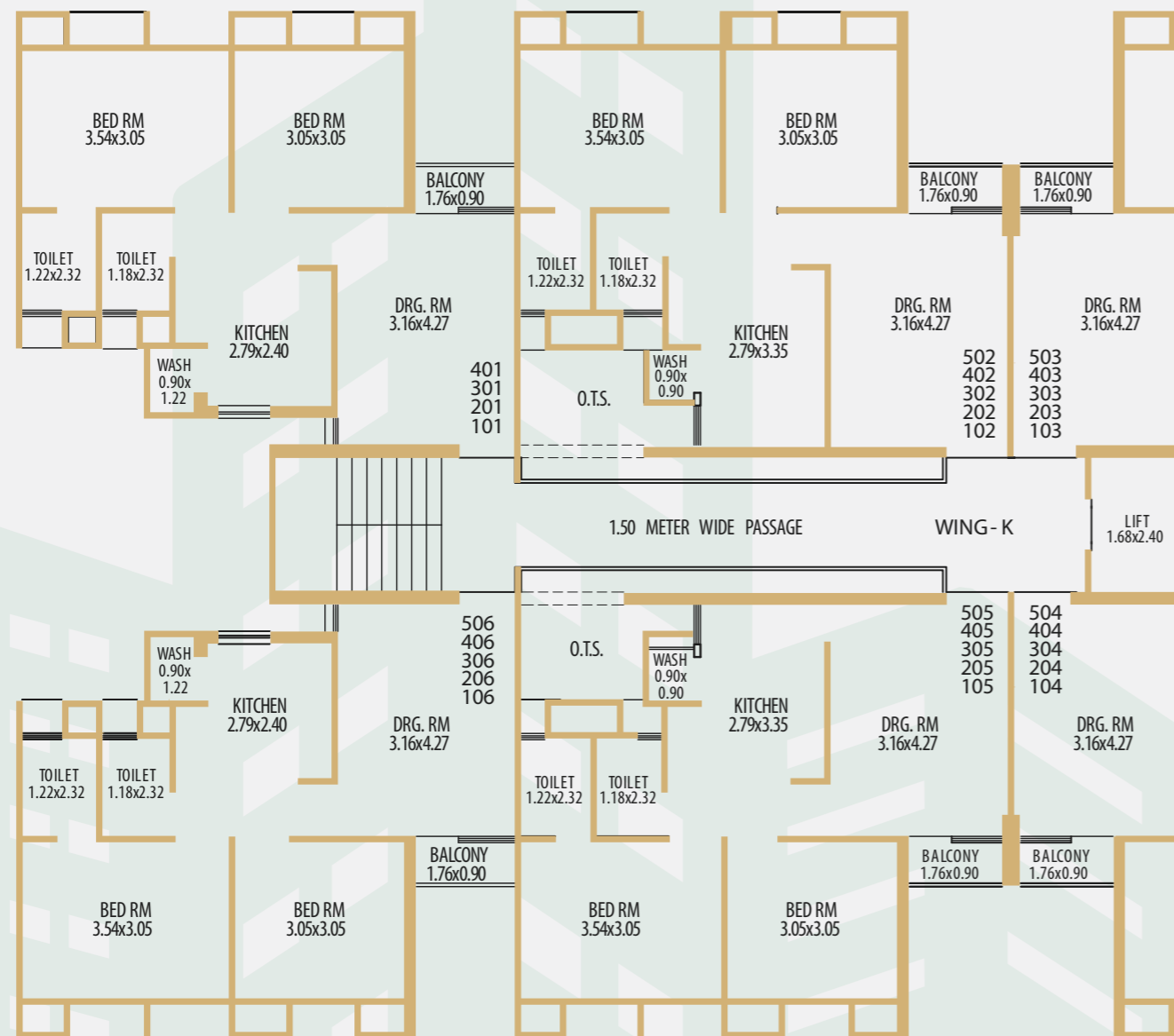


# VIRAM - 2

## Phase - II

### 2 BHK FLATS

- Club House
- Indoor Games Area
- Landscaped Garden
- Gazebo
- Senior Citizen Area with Sitting Benches
- Children's Play Area with Sand Pit





**VIRAM - 2**  
**Phase - II**  
 2 BHK FLATS

2 BHK FLATS  
 Tower : IJ & KL

LAYOUT PLAN

15.00 METER WIDE T.P.S. ROAD

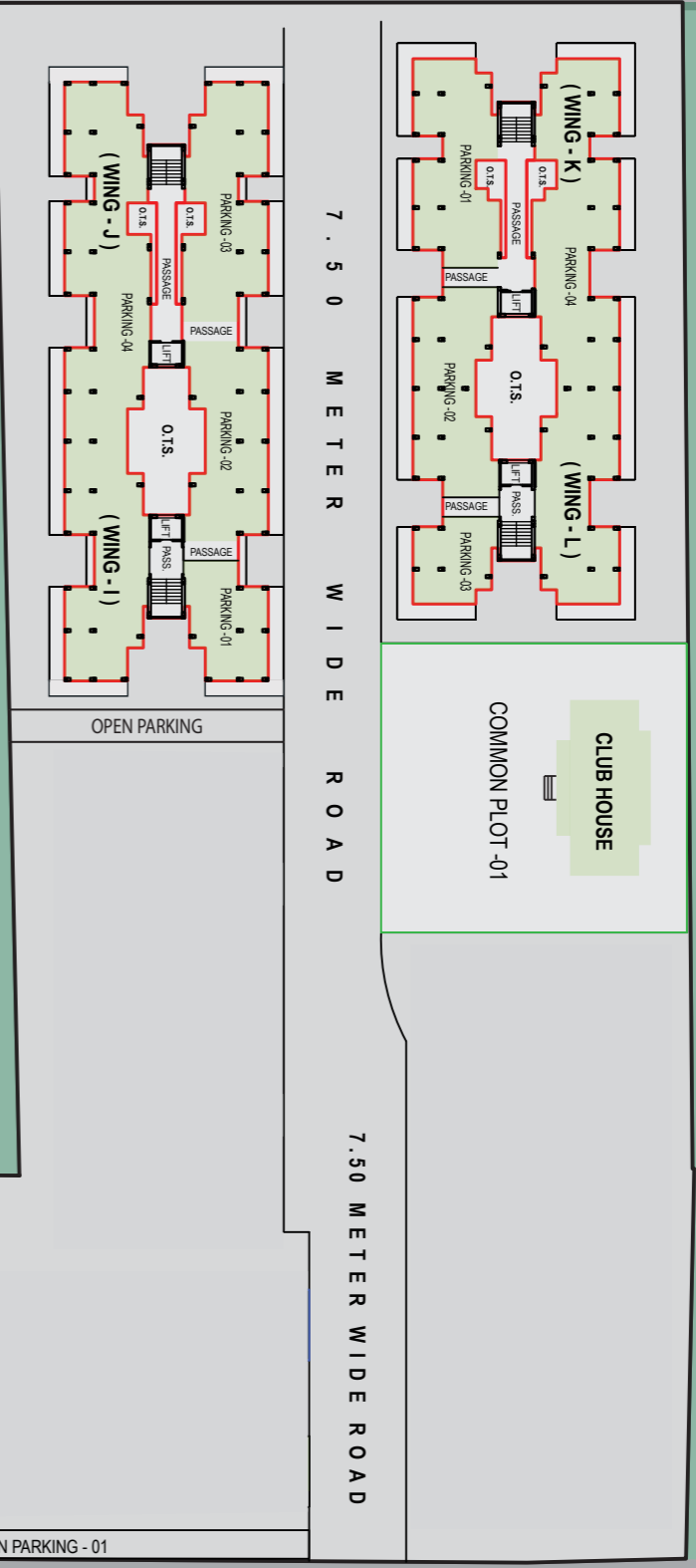
OPEN PARKING - 03

OPEN PARKING - 02

COMMON PLOT -02

OPEN PARKING - 01

15.00 METER WIDE T.P.S. ROAD



7.50 METER WIDE ROAD

7.50 METER WIDE ROAD

OPEN PARKING

COMMON PLOT -01

CLUB HOUSE