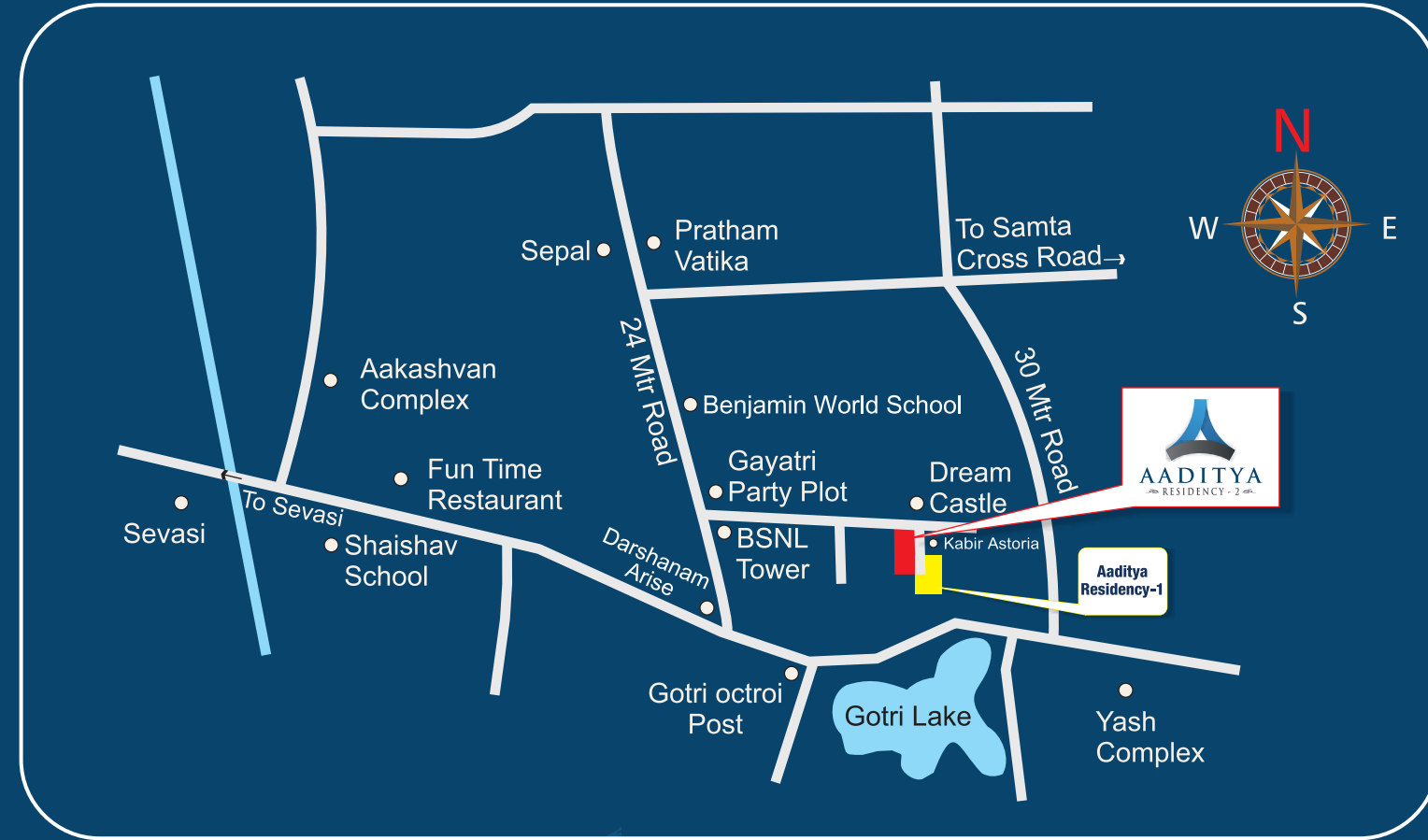


## Key Plan



Project by



Site  
**Aaditya Residency-2,**  
**Opp. Dream Castle, B/h. Gayatri Party Plot,**  
**Nr. Gotri Old Jakat Naka, Gotri, Vadodara.**

Email  
**aadityaresidency2@gmail.com**

Contact  
**+91 - 97277 52938 | 96876 72323**

Architect  
**Space Plus**

Structural Engg.  
**Ashutosh Desai**

## Mode Of Payment

25% on Booking - 10% Plinth - 10% 1st Slab - 8% 2nd Slab - 8% on 3rd Slab - 8% 4th Slab - 8% on 5th Slab - 8% on 6th Slab - 5% Brick work - 5% on plaster - 5% on Finishing.

## Special Note:

1. Any Government or legal charges e.g. Stamp Duty & Registration Charges, GST any such additional Govt. Taxes, Maintenance Deposit, Electrical deposit and meter charges will be extra. 2. Cheque bounce incidents / Continuous default in payments leads to cancellation, Defaults in payment of stage wise instalment will attract interest as per RERA Rules & continuous default will lead to cancellation. 3. The developers will not be responsible in case of any delay in water supply, electricity connection, drainage works by local authority. 4. Extra work will be executed after making full payment. 5. Possession will be given after one month of settlement of all accounts. 6. Refund of amount in case of cancellation will be paid as per RERA Rules & the amount of extra work if any will be deducted from refund amount. 7. Developers / Architect shall have the right to change or raise the scheme or any details herein and such changes or revision will be binding to all members. 8. Buyers are not allowed to change external elevation of the building. 9. Development charges and common maintenance deposit should be paid extra. 10. Terrace rights retained by the developers. 11. This brochure is for information purpose only, it does not form a part of agreement or any legal document.

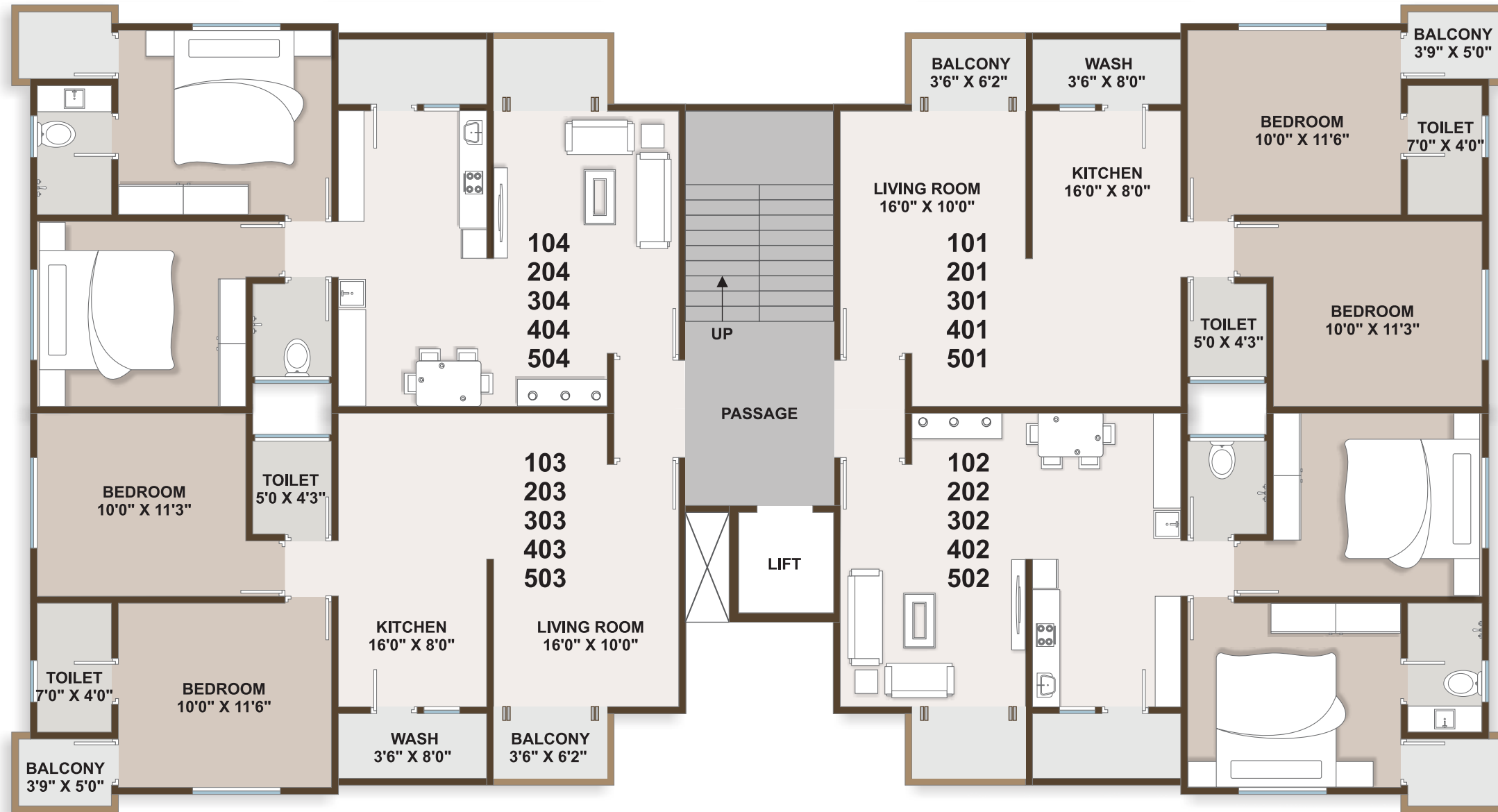
# AADITYA

## RESIDENCY 2

### 2BHK LUXURIOUS APARTMENT



## 1<sup>st</sup> to 5<sup>th</sup> Floor Plan (2BHK)



## Amenities

- ▶ Standard Elevator to each tower.
- ▶ Letter box to maintain uniformity.
- ▶ Anti termite to all buildings.
- ▶ Paved parking & internal RCC Road.
- ▶ Sufficient parking space at ground level
- ▶ 24 Hrs water supply.
- ▶ Individual borewell to each tower.
- ▶ Fix Grill bedroom & Kitchen.

**HOMES WITH NATURAL LIGHT  
THAT LIGHT UP YOUR DAY**



## Specification

**Structure :** Earthquake resistance RCC framed structure design.

**Finishing :** Internal smooth plaster with white cement putty finish and External double coat plaster with weather resistant paint.

**Flooring :** Vitrified tiles with polished 2x2 flooring in all rooms.

**Doors :** All doors laminated finish with standard lock & stone frame.

**Kitchen :** Granite platform with SS Sink & Premium branded wall tiles dedo upto lintel level.

**Bathroom :** Designer tiles upto lintel level with standard quality C.P. Fittings & sanitary ware.

**Electrification :** Concealed ISI mark copper wiring, AC points in all rooms & Good quality modular switches.

**Windows :** Powder coated alluminum section with sun light reflected glass window with stone frame.

**Plumbing :** Systmetrix concealed U-PVC & C-PVC plumbing.

**Water Supply :** Under ground and overhead water tanks with sensor.

**Terrace :** Brickbet coba with china mosaic tiles.