



Developers : **SSD Infrastructure**

Site: Affinity White, B/h Bombay Shopping Centre,
Near Ambedkar Circle, Alkapuri, Vadodara.

Ph.: **+91 99250 11994**
Email: kiran@apsvt.com

Architect: **ASQUARE**
ARCHITECTURE & INTERIORS

Structural Engineer:
Chirag Shah



Disclaimer: All plans are subject to amendments and approval by the relevant authorities. All photography and computer imagery are artist's impression and are provided for illustrative and indicative purposes only. While every reasonable care has been taken in providing this information, the developers cannot be held responsible for any inaccuracy. Subject to Vadodara Jurisdiction.

design:simke&arrow@98240192010



AFFINITY WHITE

4 BHK Luxury Apartments



CA NEW DIMENSION IN LUXURY LIVING...WHERE ELEGANT AESTHETICS
& SMART PLANNING MEETS TO OFFER A BLISSFUL LIFE!



Amenities

- Decorative compound gate
- Standard quality passenger lift
- Fully glazed underground or overhead water tank for 24 hour water supply with sensor
- Allotted car parking
- Anti-termite treatment
- Back-up Generator for common areas and lift
- Security Cabin
- Attracted Entrance Lobby and Reception area

Specifications

Structure:

- Well designed RCC frame structure as per structural engineer's design.

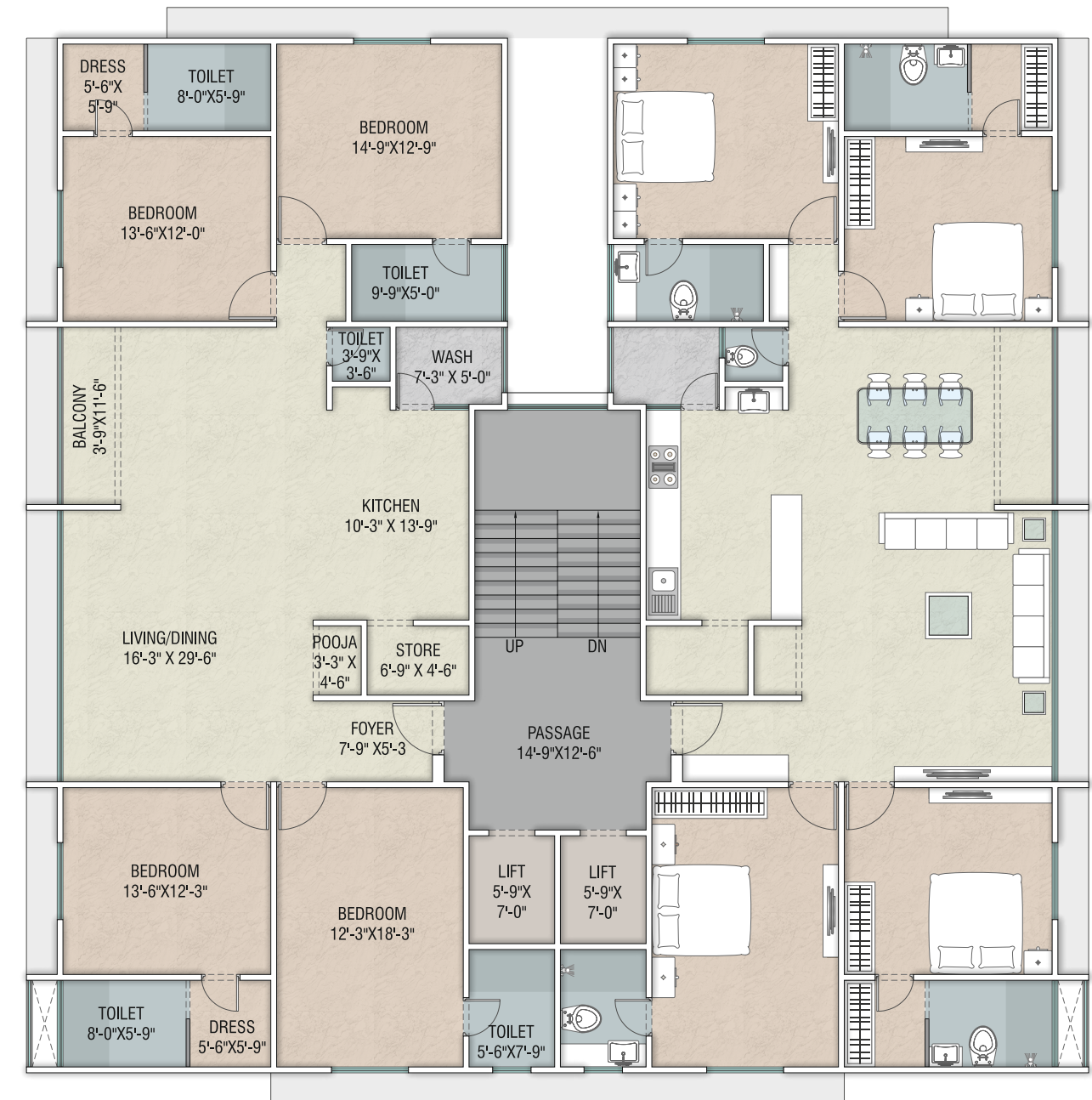
Flooring:

- Vitrified flooring in living, dining, kitchen, balcony and bedrooms. Ceramic tiles in bathrooms.

Kitchen:

- Granite platform with SS kitchen sink and designer tiles up to lintel level over the platform.

Typical floor plan



Bathrooms:

- Designer tiles up to lintel level with quality bath fittings, sanitary ware and glazed tiles.

Plumbing:

- Systematic wall concealed CPVC/UPVC
- Branded plumbing fitting, Geyser point in Bathrooms.

Doors & Windows:

- Main door with PU polish with standard safety lock and fittings. All internal doors are flush doors with melamine polish.
- Aluminium windows with reflective glasses and safety grill.

Electrification:

- Concealed copper ISI wiring and good quality modular switches with sufficient points.
- Provision for Split AC in master bedroom.
- Geyser point in bathroom.
- MCB in main distribution board.

Finishing:

- Internal smooth finish plaster and Asian plastic paint or equivalent on internal walls.
- External waterproof plaster with 2 coat of texture. Railing with enamel paint.