



DEVELOPERS:



Site: "AKSHAR AASHRAY", Opp Gayatri Mandir,  
Near Akshar Yug, Waghodia Road, Timbi, Vadodara

Email: aksharaashray@gmail.com  
Ph.: +91 97732 00456, 97732 02727

Architect:



Structure Engg.: A. A. Desai

**Disclaimer:** All plans are subject to amendments and approval by the relevant authorities. All photography and computer imagery are artist's impression and are provided for illustrative and indicative purposes only. While every reasonable care has been taken in providing this information, the developers cannot be held responsible for any inaccuracy. Subject to Vadodara Jurisdiction.

design: stroke&arrow +91 98240 92010



TENAMENT | 3 & 4 BHK DUPLEX



IMPRESSIVE ENTRANCE GATE



अक्षर  
AASHRAY

## WALK INTO PARADISE!

Welcome to Akshar Aashray, a delightful residential campus. An ideal mix of Tenaments & 3-4 BHK Duplex Bungalows with the indulgence of spacious living spaces, a touch of exclusivity with ample open spaces in your bungalow plot as well as the entire campus, a well connected fast developing location.

A unique, private and peaceful sanctuary, Akshar Aashray would be the place where you would love to live with your entire family. A place where you could see your children growing up in the safe and secure environs, a place where you could see your parents enjoying their greying years with the company of others of their age, a place where you would love to come back after a hard day's work.





## A PERFECT MIX OF SMART PLANNING, GOOD QUALITY FINISH & WELL DESIGNED CAMPUS

Smartly designed Tenaments & Duplexes at Akshar Aashray shall make your dream of residing at a well developed campus come true.

An elegant entrance gate with graceful landscape welcomes you, while the well designed master plan and multiple house layout options allow you to choose a home that suits your lifestyle requirements.

The elegant and stylish Akshar Aashray is a breath of fresh air amongst the many upcoming residential projects because of its sheer simplicity and stress on offering a quality product at a very AFFORDABLE PRICE.

Enjoy living at Akshar Aashray, amidst the landscaped garden and a host of beautifully designed recreational amenities. Come realize your dreams!



TENAMENT



3 & 4 BHK DUPLEX



CLUBHOUSE

PASTE



# PASTE

## THE LEISURE AMENITIES... to help you de-stress & enjoy life!

Akshar Aashray makes life a celebration with its numerous leisure facilities. Nothing could be healthier for your children than to enjoy safe and wholesome fun with other kids. And for you to move out of the house and indulge in the fun activities offered in the campus.

### Recreational Amenities include:

- Party Plot
- Designer Gate with Security Cabin
- Clubhouse/Multipurpose Hall
- Indoor Games
- Temple
- Volleyball Court
- Lush Green Landscape Garden
- Children Play Area
- Football/Basketball Court
- Garden Gymnasium
- Jogging Track
- Vadil Visamo (Senior Citizen's Seating)
- 24 Hrs. Water Supply
- Designer Number Plate
- Anti Termite to all Duplex & Tenaments
- Internal RCC Road

## SPECIFICATIONS

**Structure:** All RCC & Brick Masonry works as per structural engineer's design.

**Finishing:** Inside smooth plaster with White Cement Putty & Primer Finish and External double coat plaster with 100% Acrylic Color.

**Flooring:** Vitrified Tiles Flooring in all Room.

**Doors:** Decorative main door & Internal doors flush door with stone frame.

**Windows:** Aluminum section windows with reflective glass, mosquito net & safety grill.

**Terrace:** Open terrace finished with water proofing.

**Kitchen:** Granite kitchen platform with SS Sink, Premium branded wall tiles dado up to lintel level.

**Bathroom:** Designer tiles up to lintel level with standard quality C.P. Fittings.

**Electrification:** Concealed ISI mark copper wiring, Ac Point in Master Bedroom, Good Quality modular switches.

**Plumbing:** Standard concealed U-PVC & C-PVC Plumbing, Geyser Point.

**Water Supply:** Specially Designed Common Water Distribute system with overhead tank.

# LAYOUT PLAN



■ TYPE-A   
 ■ TYPE-B   
 ■ TYPE-C   
 ■ TYPE-D

BLOCK NO	PLOT AREA (SQ.FT)	BLOCK NO	PLOT AREA (SQ.FT)	BLOCK NO	PLOT AREA (SQ.FT)
A 01 to 15	1250	B 70	999	C 47	940
A 16	1320	B 71	1052	C 48	921
A 17	1260	B 72 to 83	868	C 49 to 70	704
A 18 to 30	1250	B 84	995	C 71 - 72	816
A 31	2135	B 85	917	C 73 to 94	704
A 32	1949	B 86 to 97	868	C 95 - 96	921
A 33	1807	B 98	946	C 97 to 118	704
A 34	1636	B 99	1095	C 119 - 120	816
A 35	1522	B 100	1121	C 121 to 142	704
A 36	1528	B 101 to 115	868	C 143 - 144	921
A 37	1549	B 116	917	C 145 to 166	704
A 38 to 45	1250	B 117	1300	C 167 - 168	816
A 46 - 47	1369	B 118 to 125	868	C 169 to 190	704
A 48 to 52	1250	B 126 - 127	950	C 191 - 192	921
A 53	1536	B 128 to 132	868	C 193 to 214	704
A 54	1385	B 133	1139	C 215	816
A 55	1250	B 134	1463	C 216	1017
A 56	1558	B 135 to 139	868	C 217 to 230	704
A 57	1516	B 140	1211	C 231	1046
A 58	1250	B 141	950	D 01	1396
A 59 - 60	1336	B 142 to 149	868	D 02	771
A 61	1250	B 150 - 151	1300	D 03	772
A 62	1709	B 152 to 159	868	D 04	774
A 63	1851	B 160	950	D 05	775
A 64	1250	B 161	1211	D 06	776
A 65	1418	B 162 to 166	868	D 07	778
B 01	1234	B 167	1663	D 08	779
B 02	1089	B 168	1255	D 09	781
B 03	1100	B 169 to 174	868	D 10	782
B 04	1112	B 175 - 176	950	D 11	784
B 05	1123	B 177 to 184	868	D 12	785
B 06	1134	B 185 - 186	1300	D 13	786
B 07	1145	B 187 to 194	868	D 14	788
B 08	1157	B 195	950	D 15	1633
B 09	1165	B 196	1014	D 16	767
B 10	1162	B 197 to 202	868	D 17 to 29	697
B 11	1152	B 203	1367	D 30	1442
B 12	1141	B 204	1457	D 31	1084
B 13	1131	B 205 to 210	932	D 32 to 44	697
B 14	1212	B 211	1289	D 45	726
B 15	999	B 212	1020	D 46 to 67	697
B 16 to 27	868	B 213 to 220	932	D 68	1124
B 28 - 29	995	B 221	1369	D 69	1081
B 30 to 41	868	C 01	1099	D 70 to 90	697
B 42 - 43	999	C 02 to 22	704	D 91	814
B 44 to 55	868	C 23	1098	D 92	1032
B 56 - 57	995	C 24	786	D 93 to 113	697
B 58 to 69	868	C 25 to 46	704	D 114	1138



# TYPE-A

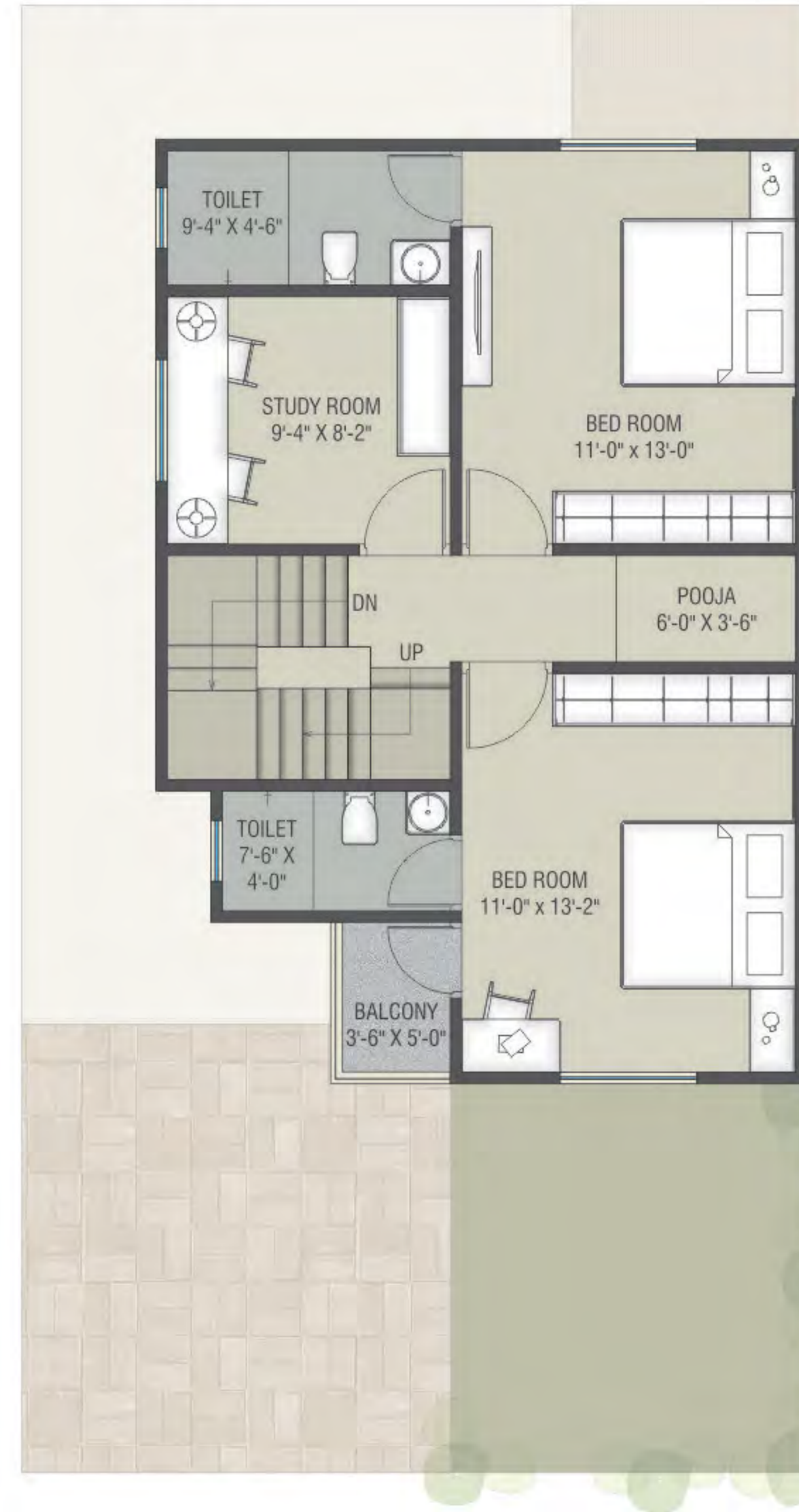
**4 BHK DUPLEX**  
Mini Plot Area: 1250 Sq. Ft.



Ground Floor



First Floor



# TYPE-B

**3 BHK DUPLEX**  
Mini Plot Area: 868 Sq. Ft.



Ground Floor



First Floor

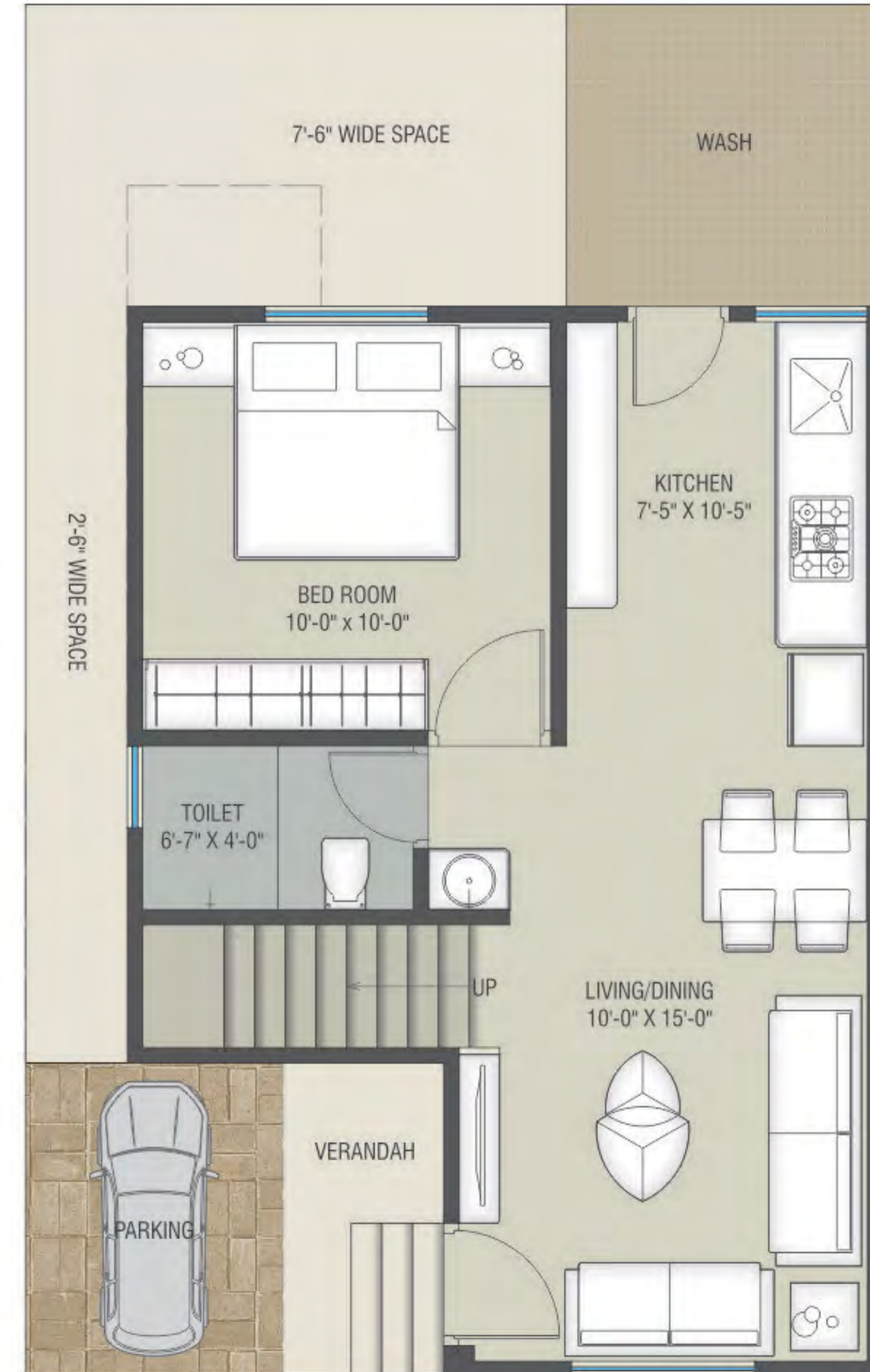


# TYPE-C

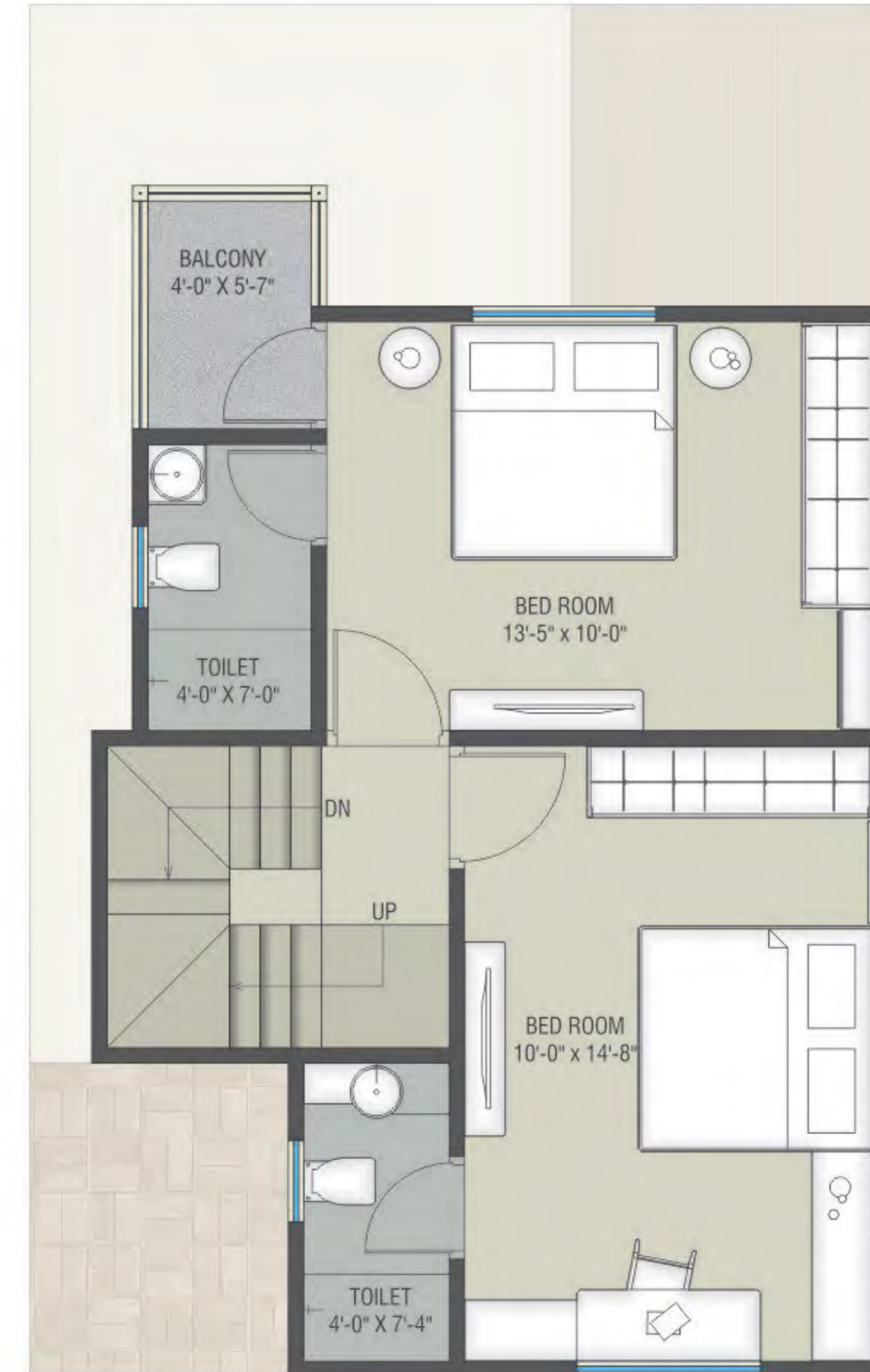
3 BHK DUPLEX  
Mini Plot Area: 704 Sq. Ft.



Ground Floor



First Floor



# TYPE-D

TENAMENT  
Mini Plot Area: 697 Sq. Ft.



Ground Floor

