

## LOCATION MAP



A project by:  
**AMAR GROUP**  
 — THE TRADITION OF TRUST —  
[www.amargroupvadodara.com](http://www.amargroupvadodara.com)

### AARADHYA REALITY

**Amardeep Landmark**  
 Opp. Pandit Dindayal  
 Upadhyay Nagargruh,  
 Near Amardeep Homes,  
 Ajwa Road, Vadodara-19

**FOR ENQUIRY:**  
 99099 63464  
 1800 30004 804

ARCHITECT  
  
**CHETAL**  
 ARCHITECTS & ENGINEERS

STRUCTURE  
**ASHOK SHAH**  
 & ASSOCIATES

3D DESIGN  
**IMAGINE**  
 studios

### Payment Terms

05% Booking Amount | 25% within fifteen days of booking | 10% Plinth Level | 15% 2nd slab | 15% 4th slab | 10% 6th slab | 10% 8th slab | 10% Finishing

PLEASE NOTE : Premium quality materials or equivalent branded products shall be used for all construction work. - Right of any changes in dimensions, design & specifications will be reserved with the developer, which shall be binding for all members. - External changes are strictly not allowed. - Development charges, documentation charges, stamp duty, all municipal taxes, G.E.B. meter deposit should be levied separate. - Each member needs to pay maintenance deposits separately. - In case of booking cancellation, amount will be refunded from the booking of same premise after deducting 10% of booking amount. - Possession will be given after one month of all settlement of account. - Extra work at the cost of client with prior estimate needs to be given in advance but no change in elevation and plan will be done. - The developer reserve the full right to make any changes. - This brochure does not form a part of agreement or any legal document, It is easy display of project only.

Above project is registered under Gujrera.

For further details: visit: [www.gujrera.gujarat.gov.in](http://www.gujrera.gujarat.gov.in) under registered project. RERA REGISTRATION NO.:

H\_NEST CR\_98243\_85808

॥ श्री गणेशाय नमः ॥  
 ॥ श्री अमडीवल्लभो विजयते ॥

A project by:  
**AMAR GROUP**  
 — THE TRADITION OF TRUST —



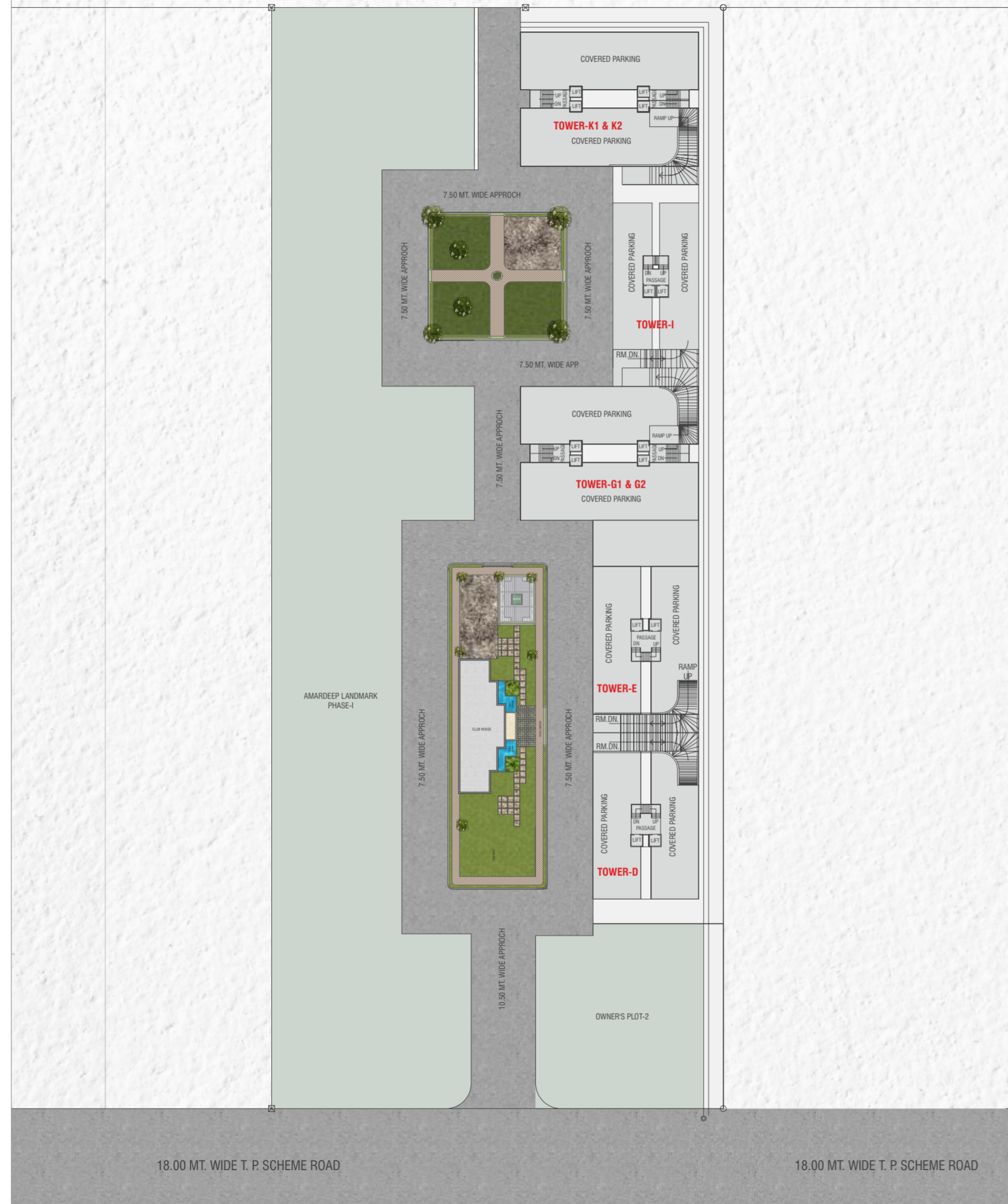
# AMARDEEP LANDMARK-2

2 & 3 BHK FLATS





## LAYOUT PLAN



## SPECIFICATION

### Structure :

Earthquake R.C.C. frame structure as per structure design

### Wall Finish :

Inside walls having smooth plaster with emulsion paints and outside surface acrylic painted

### Flooring :

Vitrified flooring in all rooms

### Doors :

Decorative main door with safety lock and other are flush doors with safety lock

### Windows :

Powder coated aluminum windows with glass and safety grills

### Kitchen :

Granite sandwich platform with S.S sink, Glazed tiles dedo upto slab level

### Toilets :

Designer bathrooms tiles with branded fitting

### Plumbing :

Concealed plumbing with good quality fittings

### Water :

Underground & Overhead tank for 24 hours water supply from VMC connection with auto control mechanism.

Boring facility for 24 hour water supply.

### Electrification :

Concealed copper ISI wiring & branded modular switches with sufficient point.

A.C. point in all room.

### Terrace :

Water proofing treatment with china mosaic tiles flooring

## AMENITIES

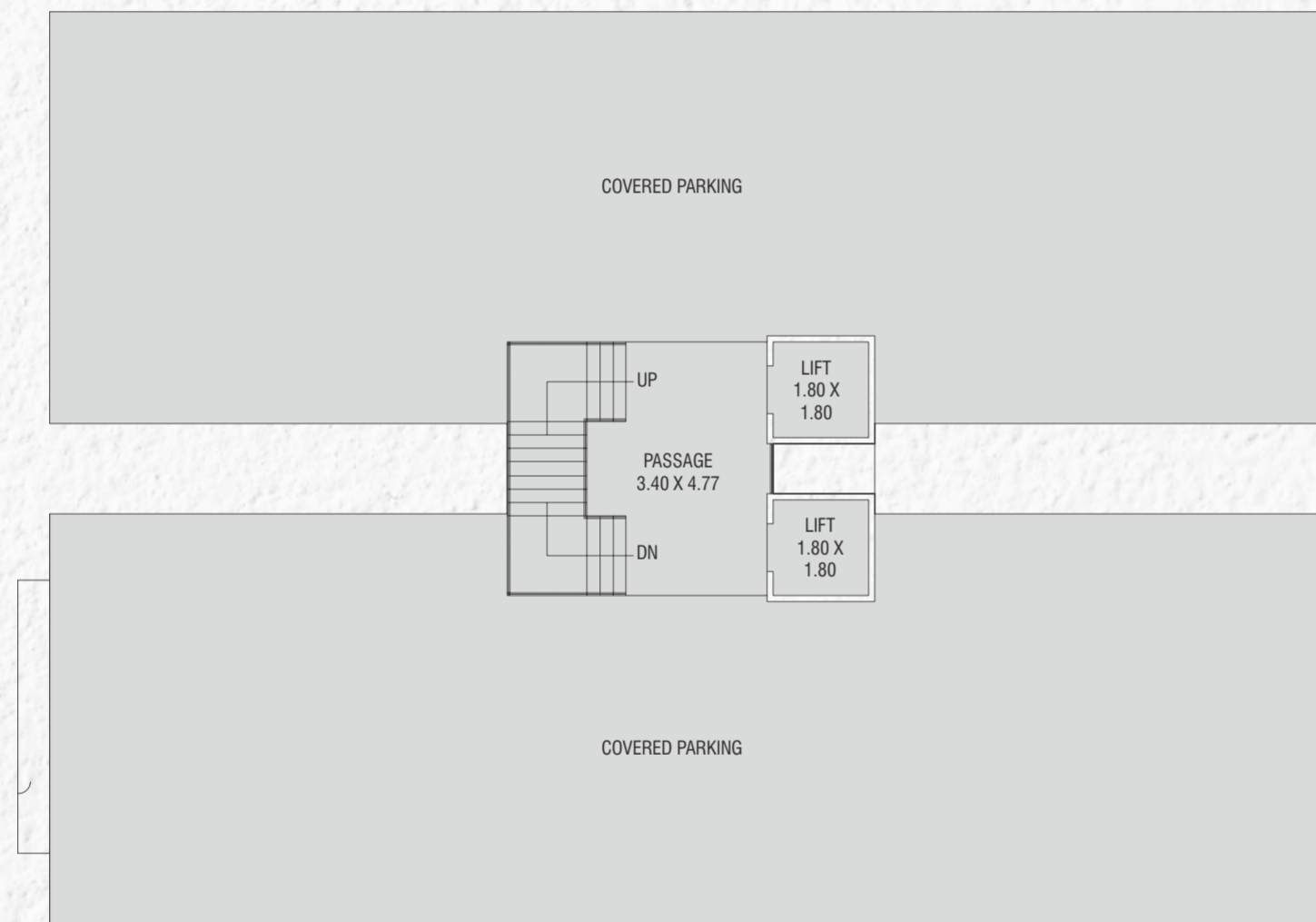
- \* Elegant Entrance Gate with Security Cabin
- \* Designer P.O.P. Ceiling with LED Lights in all room
- \* Video door security system
- \* R.O. system for Each Flat
- \* Electric Geyser in all Bathroom
- \* Common Parking for residents
- \* Power back-up for Lift, Passage & Parking Area
- \* Single Entry Campus with C.C.T.V
- \* Chimney provided in each flat
- \* Aluminum powder coated window with mosquito net

## LEISURE AMENITIES (PHASE 1&2)

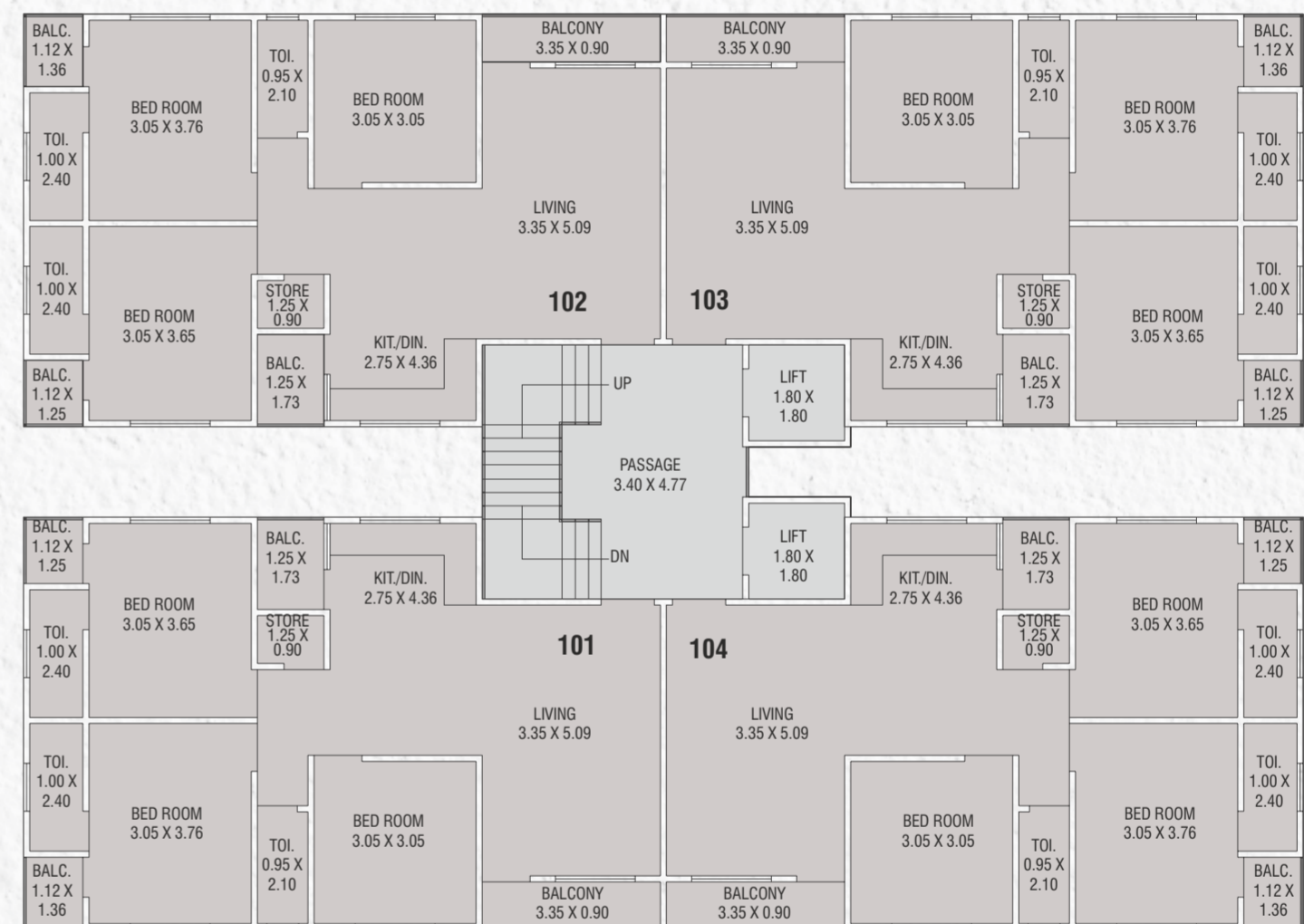
- \* Fully A.C. Club House
- \* Landscaped Garden
- \* Senior Citizen Park
- \* Children Play Area
- \* Jogging Track
- \* Gazebo and Water body
- \* Central A.C. Home Theatre
- \* Fully A.C. Gymnasium
- \* Fully A.C. Indoor Games Zone



# TOWER-D&E - GROUND FLOOR

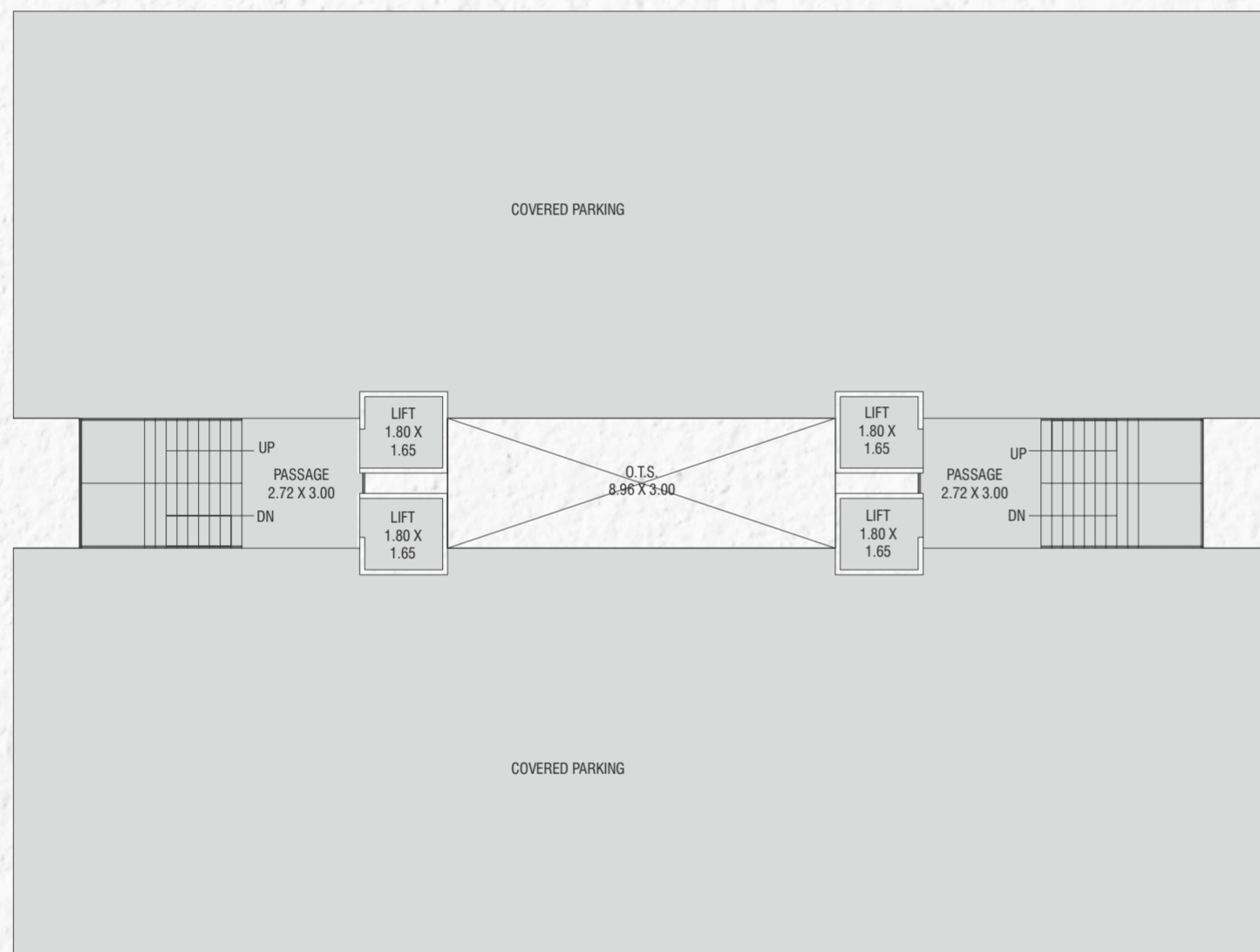


# TOWER-D&E - TYPICAL FLOOR PLAN

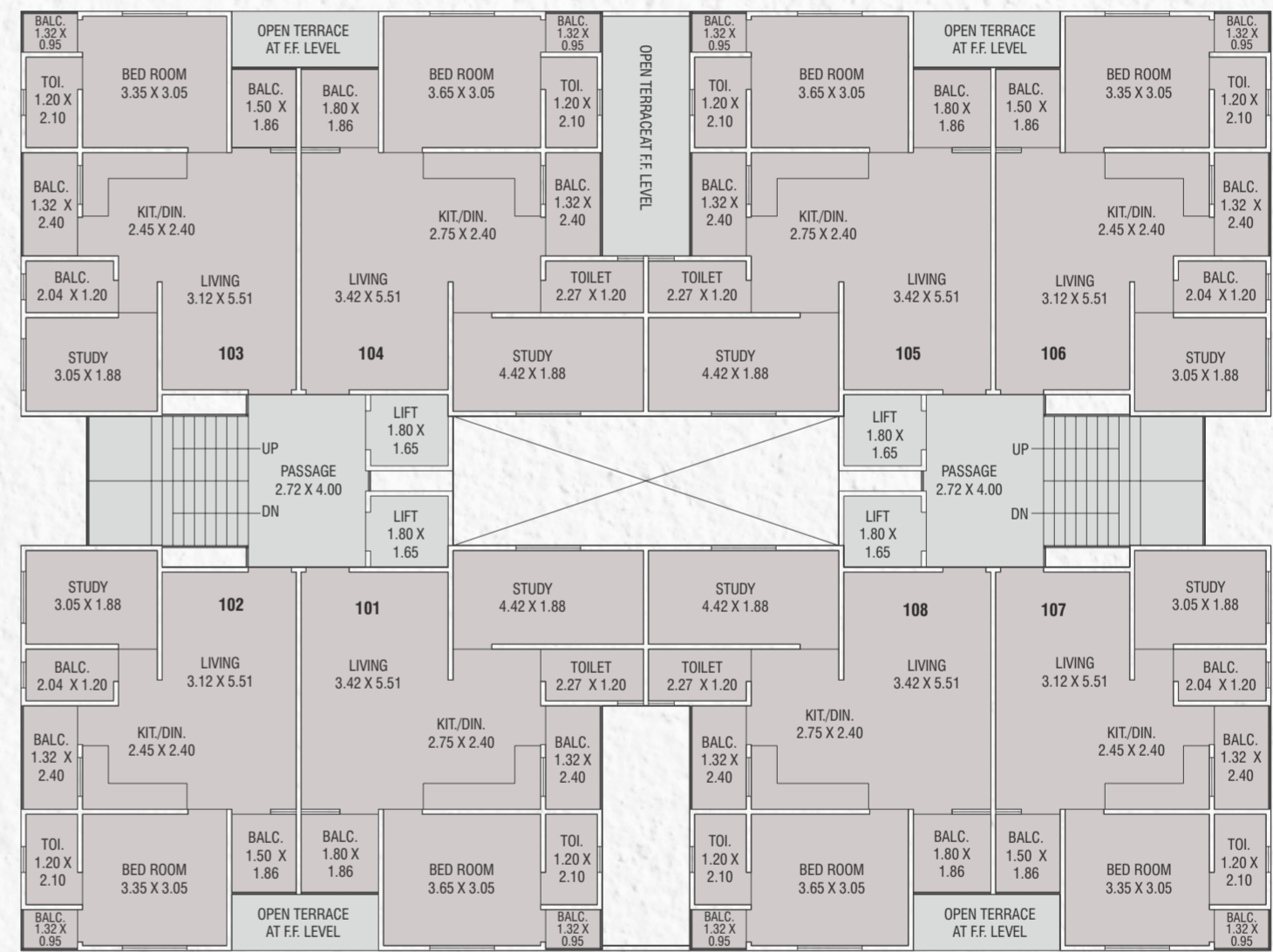




# TOWER -G1, G2 & K1, K2 - GROUND FLOOR PLAN

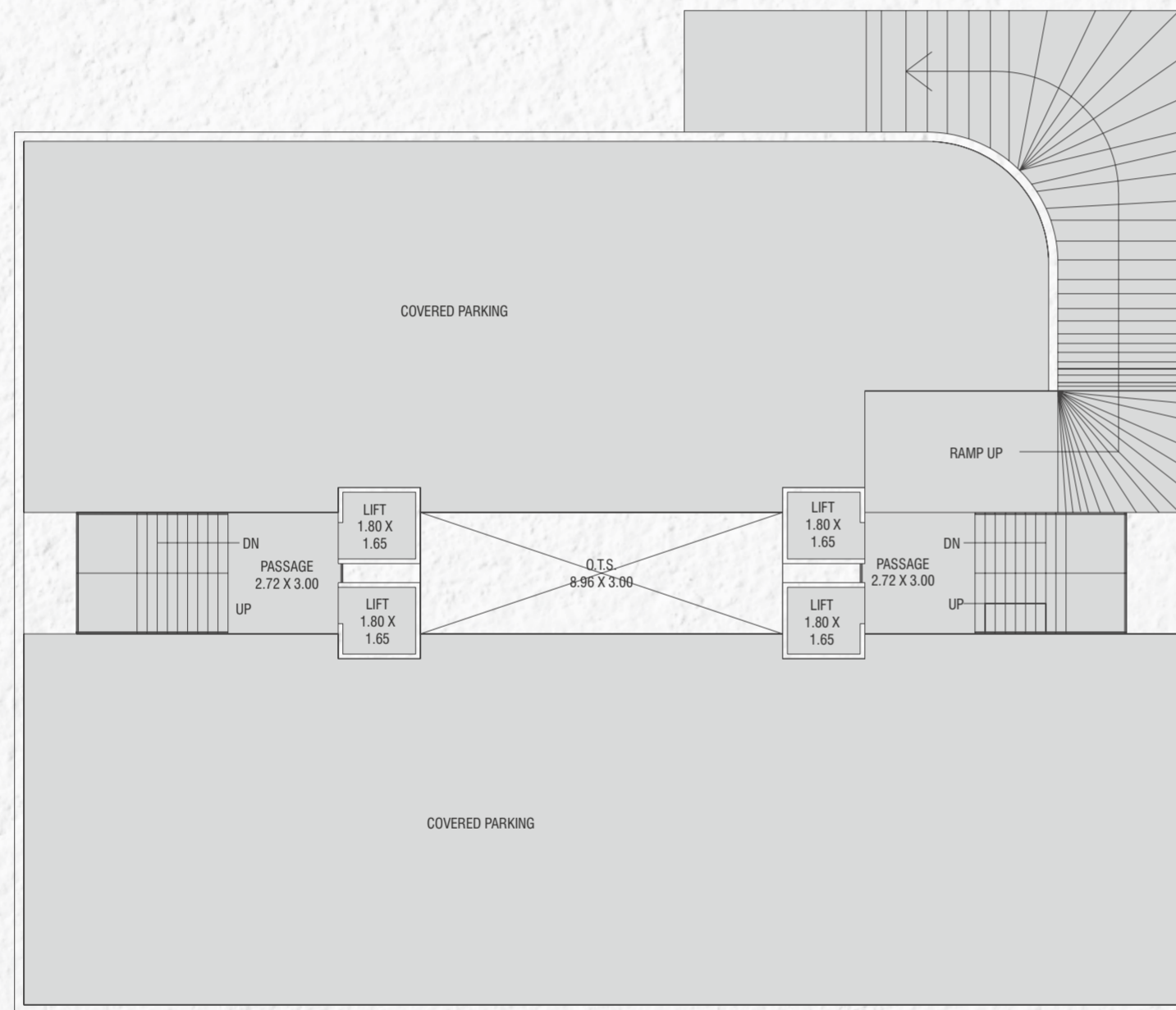


# TOWER -G1, G2 & K1, K2 - TYPICAL FLOOR PLAN

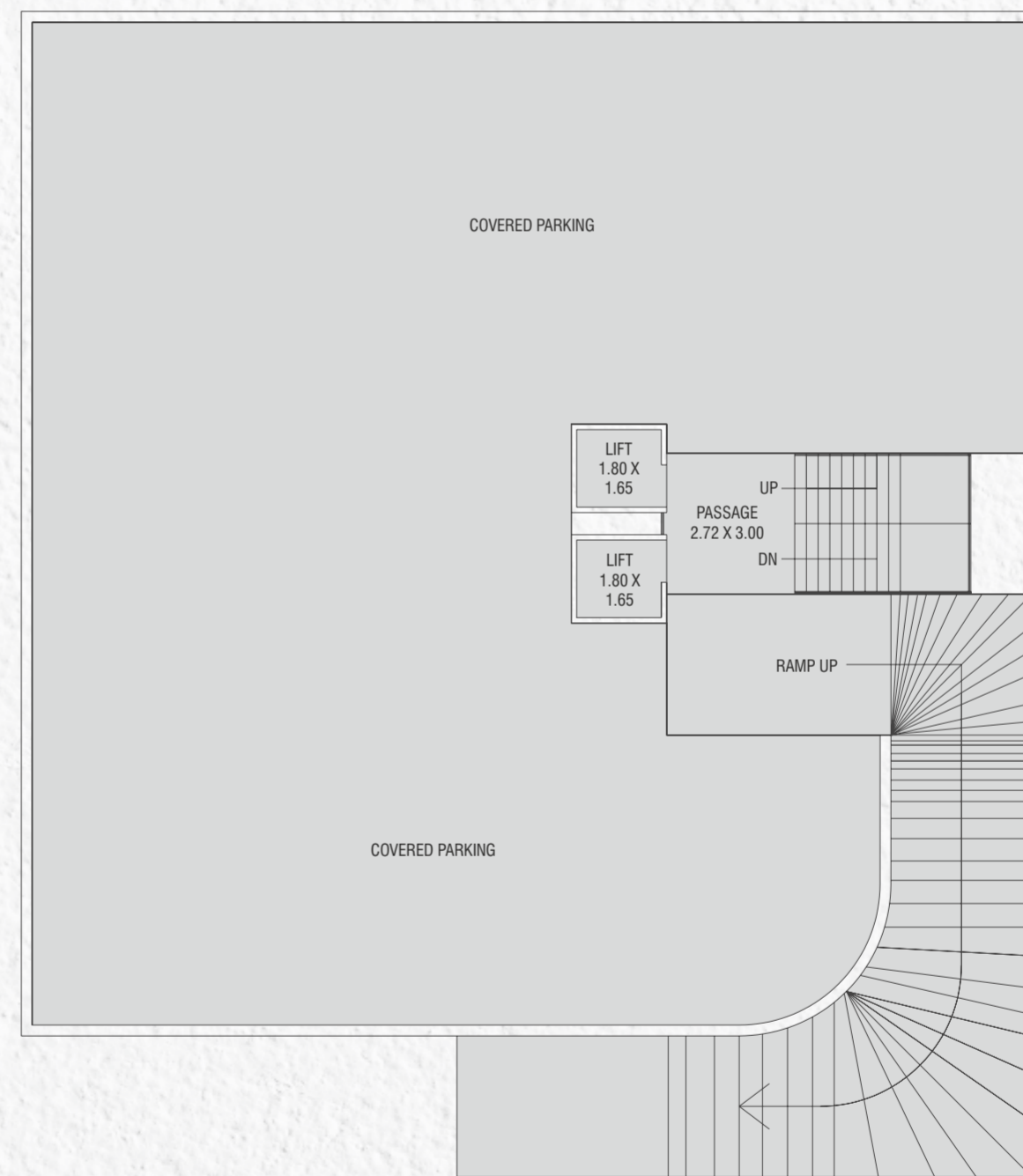




### TOWER -G1, G2 - BASEMENT FLOOR PLAN

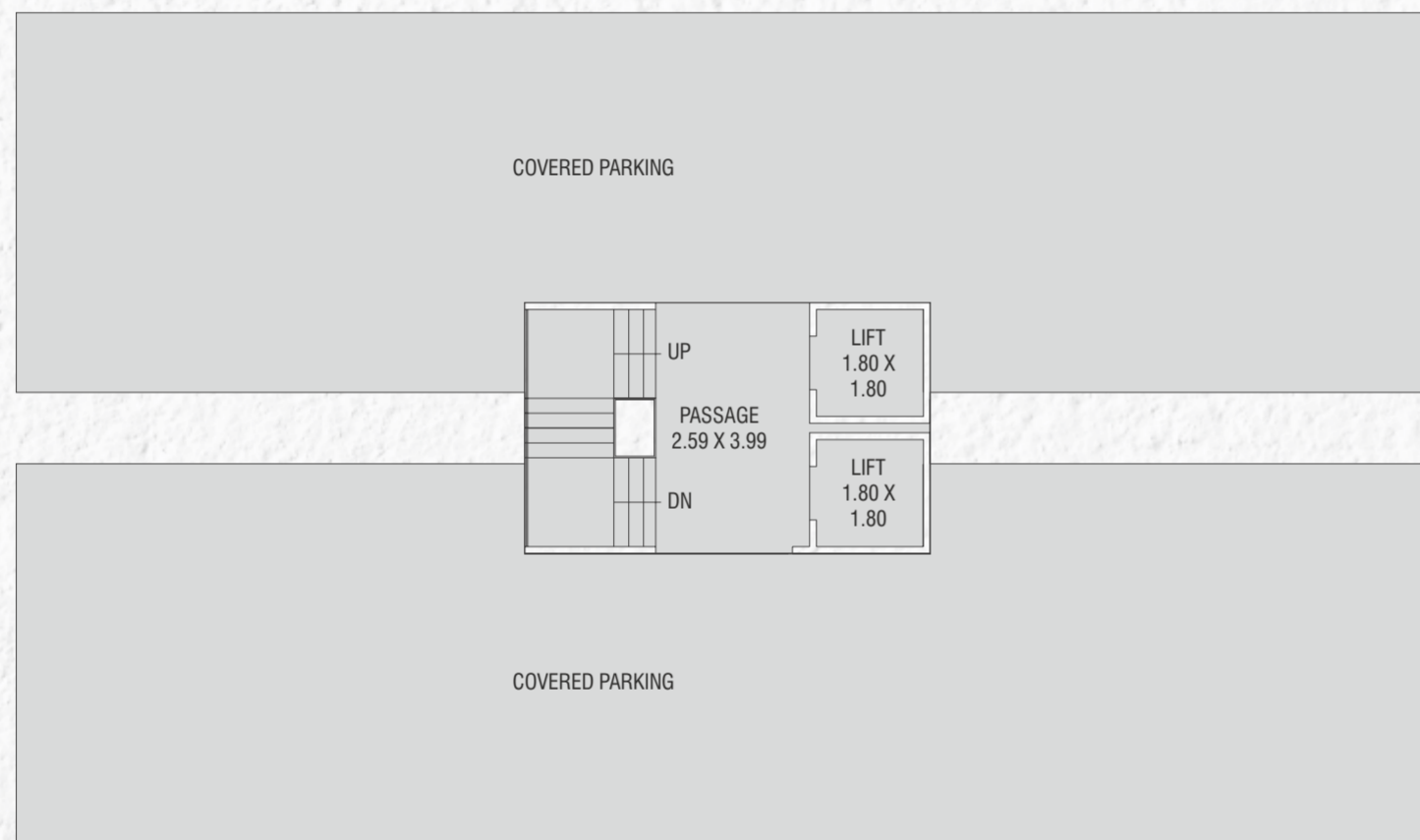


### TOWER -K1, K2 - BASEMENT FLOOR PLAN





# TOWER - I - GROUND FLOOR PLAN



# TOWER - I - TYPICAL FLOOR PLAN

