

**KEY PLAN**



Developer:  
**AVADH REALITY**

Site: "AMARDEEP SKY",  
Near Madhuvan Palace,  
B/h. Madhuvan Residency,  
Nr. Karma Lifestyle,  
Harni Road, Vadodara.

CONTACT :  
+91 98795 59399, 89800 18080  
Toll free - 1800 5727 191  
Email: [amardeepsky21@gmail.com](mailto:amardeepsky21@gmail.com)  
Web: [www.amargroupvadodara.com](http://www.amargroupvadodara.com)

ARCHITECT:  
**ASQUARE**  
ARCHITECT & INTERIORS DESIGNER

STRUCTURE:  
**ASHOK SHAH & ASSOCIATES**

**PAYMENT TERMS :**

05% Booking Amount | 35% within fifteen days of banakhat | 5% After completion of Plinth | 10% on 2nd Slab | 10% 5th Slab | 5% on 7th Slab | 5% on Brick & Internal plaster completion | 5% on completion of Sanitary, Lift & Stairs | 5% On outside plumbing & plaster | 10% Lift, Waterpump & Electric Fittings | 5% On possession

**PLEASE NOTE :** Premium quality materials or equivalent branded products shall be used for all construction work. - Right of any changes in dimensions, design & specifications will be reserved with the developer, which shall be binding for all members. - External changes are strictly not allowed. - Development charges, documentation charges, stamp duty, all municipal taxes, GST tax, G.E.B. meter deposit should be levied separately. - Each member needs to pay maintenance deposits separately. - In case of booking cancellation, amount will be refunded from the booking of same premise after deducting 10% of booking amount. - Possession will be given after one month of all settlement of account. - Extra work at the cost of client with prior estimate needs to be given in advance but no change in elevation and plan will be done. - The developer reserve the full right to make any changes. - This brochure does not form a part of agreement or any legal document, It is easy display of project only.

**DISCLAIMER :** the details , facts , specifications , figures mentioned in brochure are indicative for information purpose only and subject to modifications / compliance required as per RERA act.

Above project is registered under Gujrera.

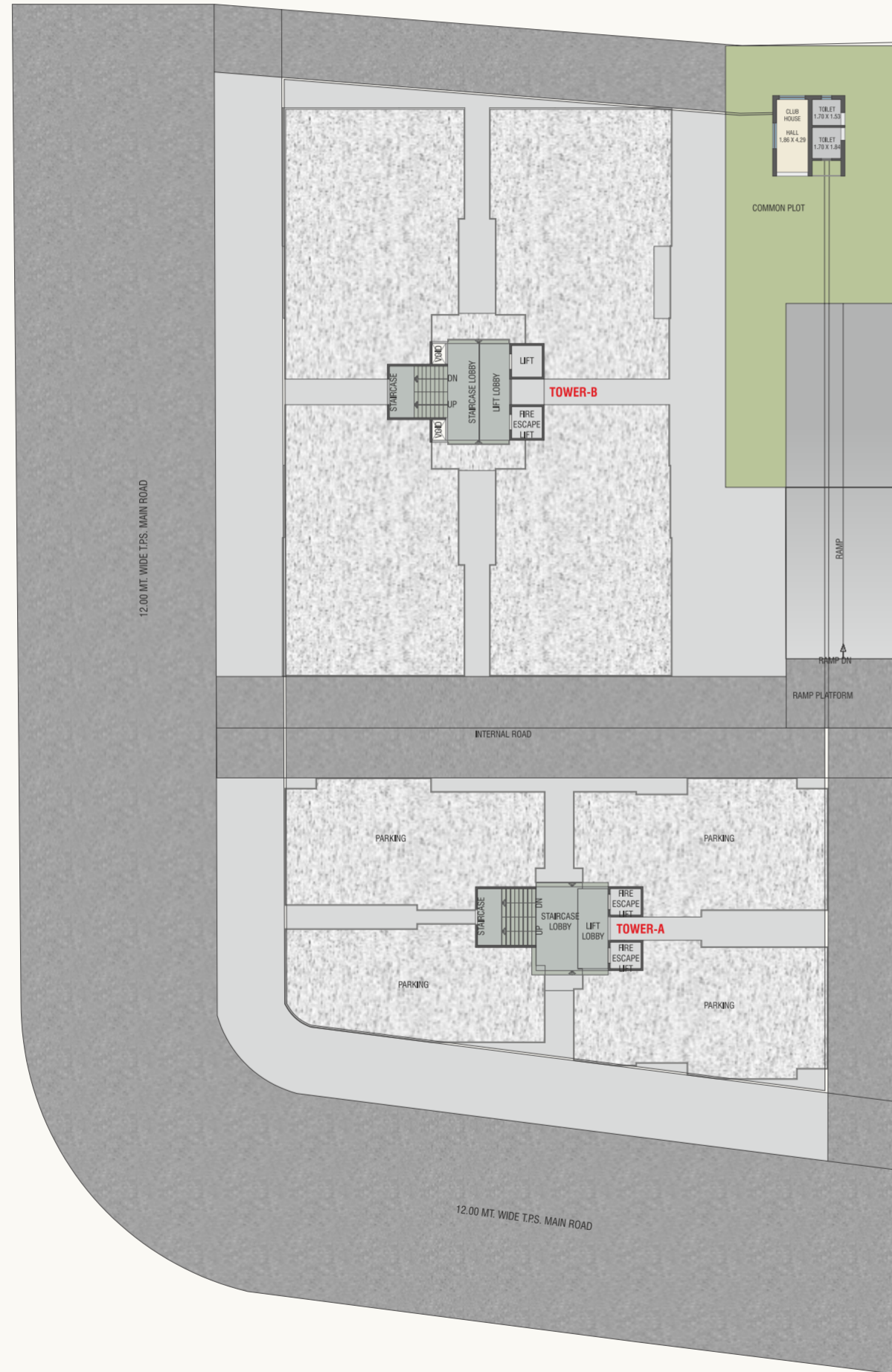
For further details: visit: [www.gujrera.gujarat.gov.in](http://www.gujrera.gujarat.gov.in) under registered project. RERA REGISTRATION NO.:

॥ श्री गणेशाय नमः ॥  
॥ श्री ज्ञानकीवल्लभो विजयते ॥

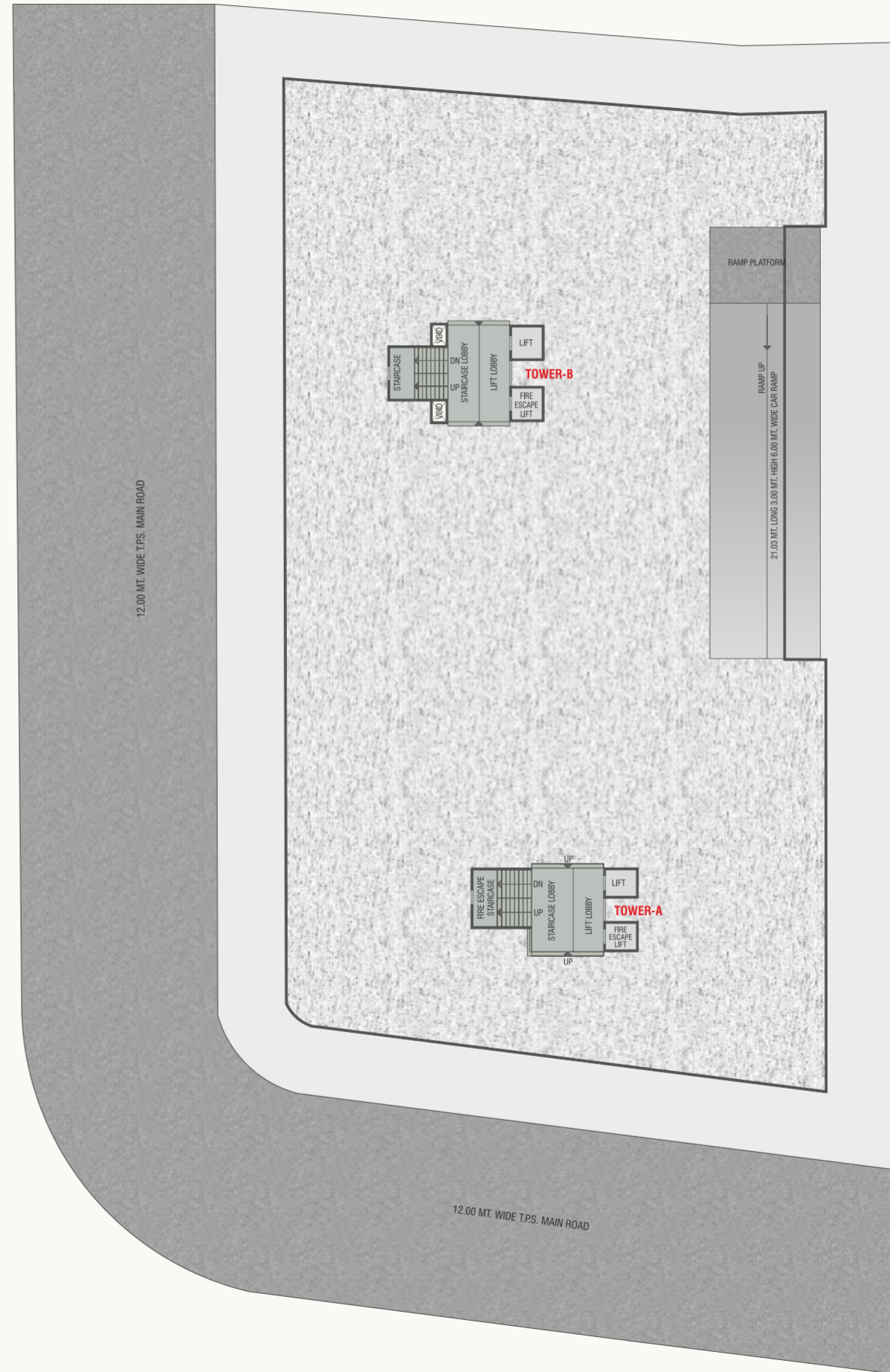
AMARDEEP  
**SKY**  
3 & 4 BHK PREMIUM FLATS



# GROUND FLOOR LAYOUT PLAN



# BASEMENT FLOOR LAYOUT PLAN



# TYPICAL LAYOUT PLAN (1st to 7th Floor)



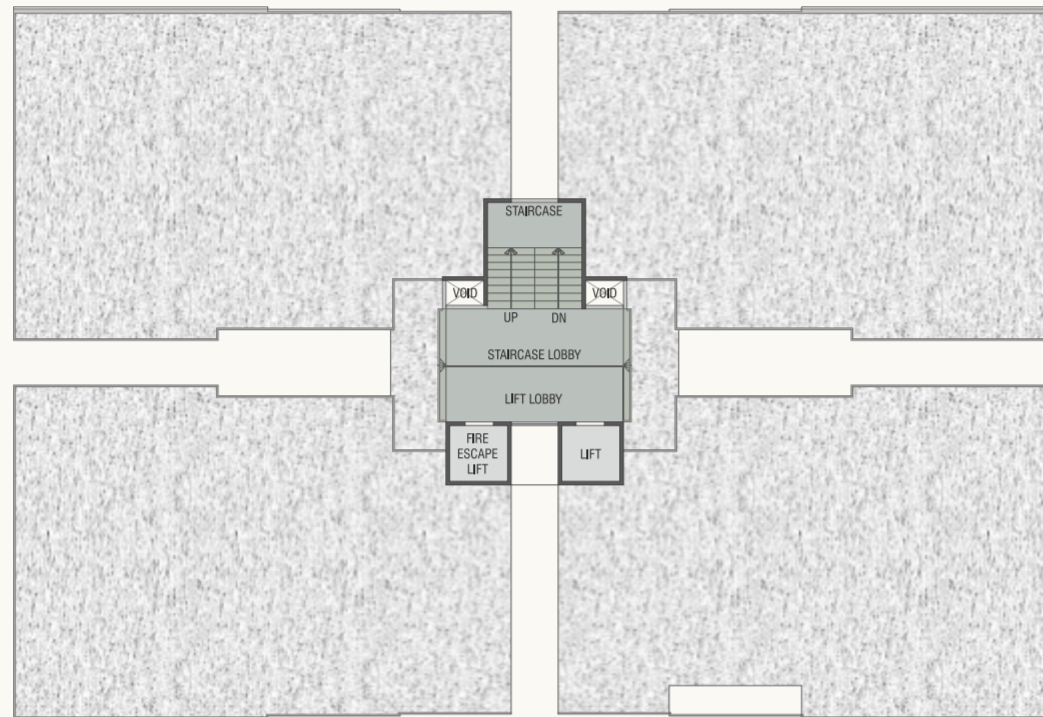
# TOWER-A : (GROUND FLOOR PLAN)



# TOWER-A : (TYPICAL FLOOR PLAN) 1ST TO 7TH FLOOR



## TOWER-B : (GROUND FLOOR PLAN)



## TOWER-B: (TYPICAL FLOOR PLAN) 1ST TO 7TH FLOOR



## SPECIFICATION

### STRUCTURE

- Earthquake R.C.C. frame structure as per structure design

### WALL FINISH

- Inside walls having smooth plaster with emulsion paints and outside surface acrylic painted

### FLOORING

- Superior quality Vitrified flooring
- Paver blocks in parking area

### KITCHEN

- Granite top platform with S.S. sink
- Decorative Glazed tiles dedo

### DOOR - WINDOWS

- Attractive main door in teak wood frame or equivalent
- Good quality flush door in all bedrooms with laminates on both side
- Aluminum powder coating window
- Safety grill in window

## VALUABLE AMENITIES

- Elegant entrance gate with security cabin
- Video door security system in each flat
- POP ceiling in living room & all bed room with LED lights
- R.O. system for each flat
- Electric Geyser in all bathrooms
- Chimney provided in each flat
- Power back-up for Lift, Passage & Parking light

### COLOUR

- Asian ultima exterior paint to exterior surface wall and Birla putty finish with asian paint for internal wall surface.

### ELECTRIFICATION

- Concealed wiring of standard quality with modular switches
- T.V. point in living room & Master bedrooms
- A.C. point in all bedrooms
- General lighting in common areas
- Well designed light pole in common area

### TOILET / PLUMBING

- Standard quality sanitary ware & branded quality plumbing fittings
- Decorative glazed tiles dedo with modern concept
- Ceramic tiles in flooring

### TERRACE

- Water proofing treatment with china mosaic tiles flooring

- Landscape garden with children play equipment
- Standard quality lift
- Brickbat water proofing treatment and china mosaic on terrace
- Underground cabling for esthetic look of the project
- RCC trimix road with designed street light poles
- Single entry campus with CCTV camera