



Structure Consultant  
Chetan M. Kambad

Architect  
Harsh Pandya  
& Associates

02 9838 955 122



📍 Survey no 32 Antica Greens, nr. Aatmiya haritage bungalows,  
Maretha, Vadodara

📞 9974567910

4 BHK DESIGNER VILLA

WHERE YOU INVESTS. IT ALWAYS MATTERS.



  
**ANTICA**  
GREENS

The time has come to stop compromising, and start living. Demand the best location, the choicest of amenities & huge open spaces. No wonder you'd say... I love my new home!



THOUGHTFULLY CRAFTED LIVING SPACES.



## AMPLE AMENITIES

- Elegant Gate
- Clubhouse
- Landscape Garden
- Gymnasium
- Senior Citizen Sitting
- Security Office
- Jogging Track

make life  
STRESS FREE



No matter, how stressful your busy schedules have been all week, But on weekends recharge yourself & Indulge in some relaxing activities at common areas.

WHERE OCCASIONS MEETS CELEBRATIONS.



A Comfortable living with a good, soothing Environment always helps to see the Brighter side of life.

Celebrate The way of Life



  
ANTICA  
GREENS





Antica Greens cherishes the natural beauty & pampers  
The Architectural Magnetism



The Five predominating features of ANTICA GREENS are Luxury, Security, Serenity, Rejuvenation and Convenience which forms essential attributes of modern living.

### Parameters of Classic Living



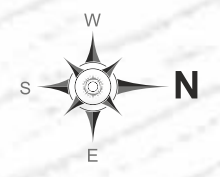
ANTICA  
GREENS

The Bird Eye View



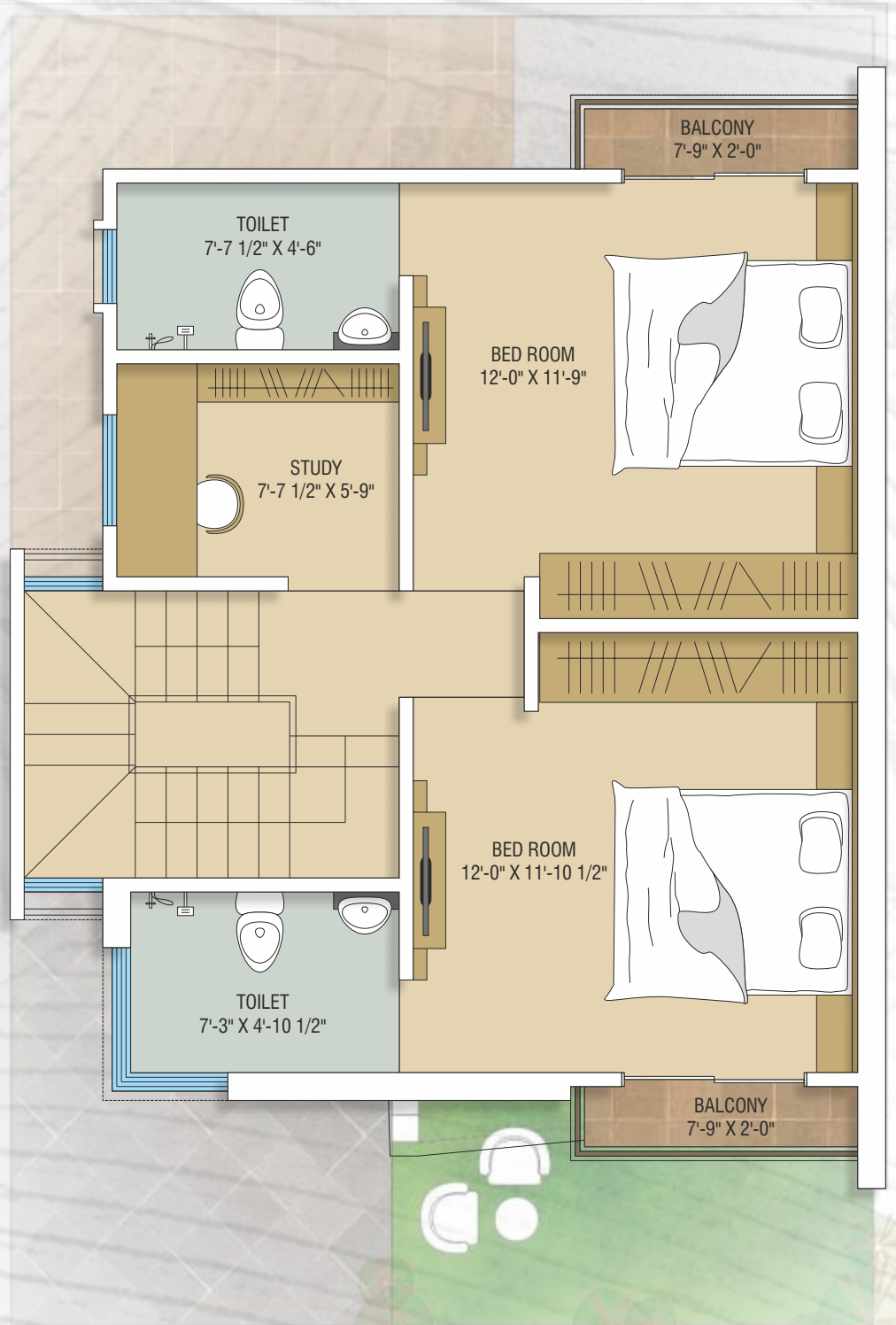
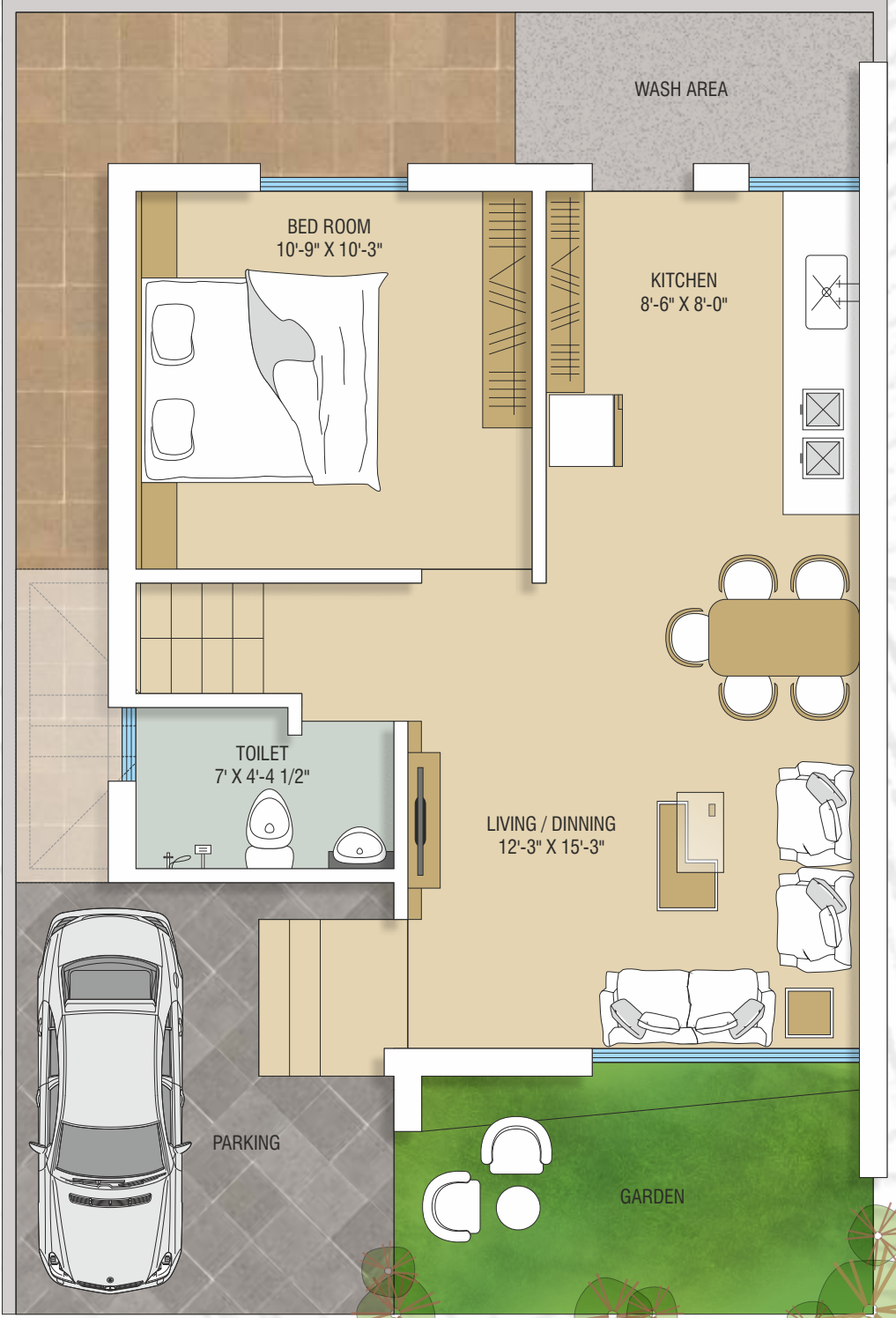
LAYOUT PLAN

- Type **A**
- Type **B**
- Type **C**

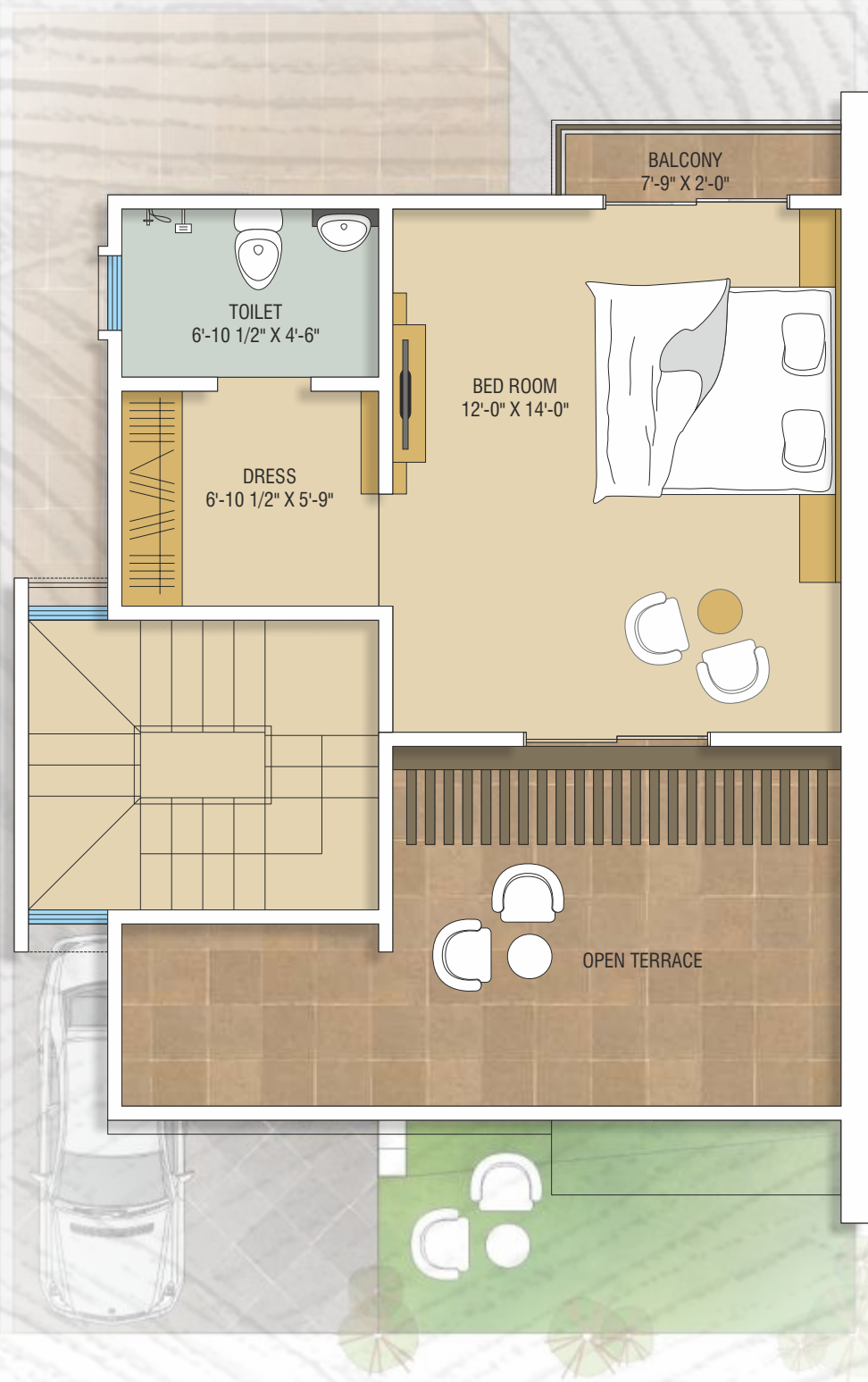
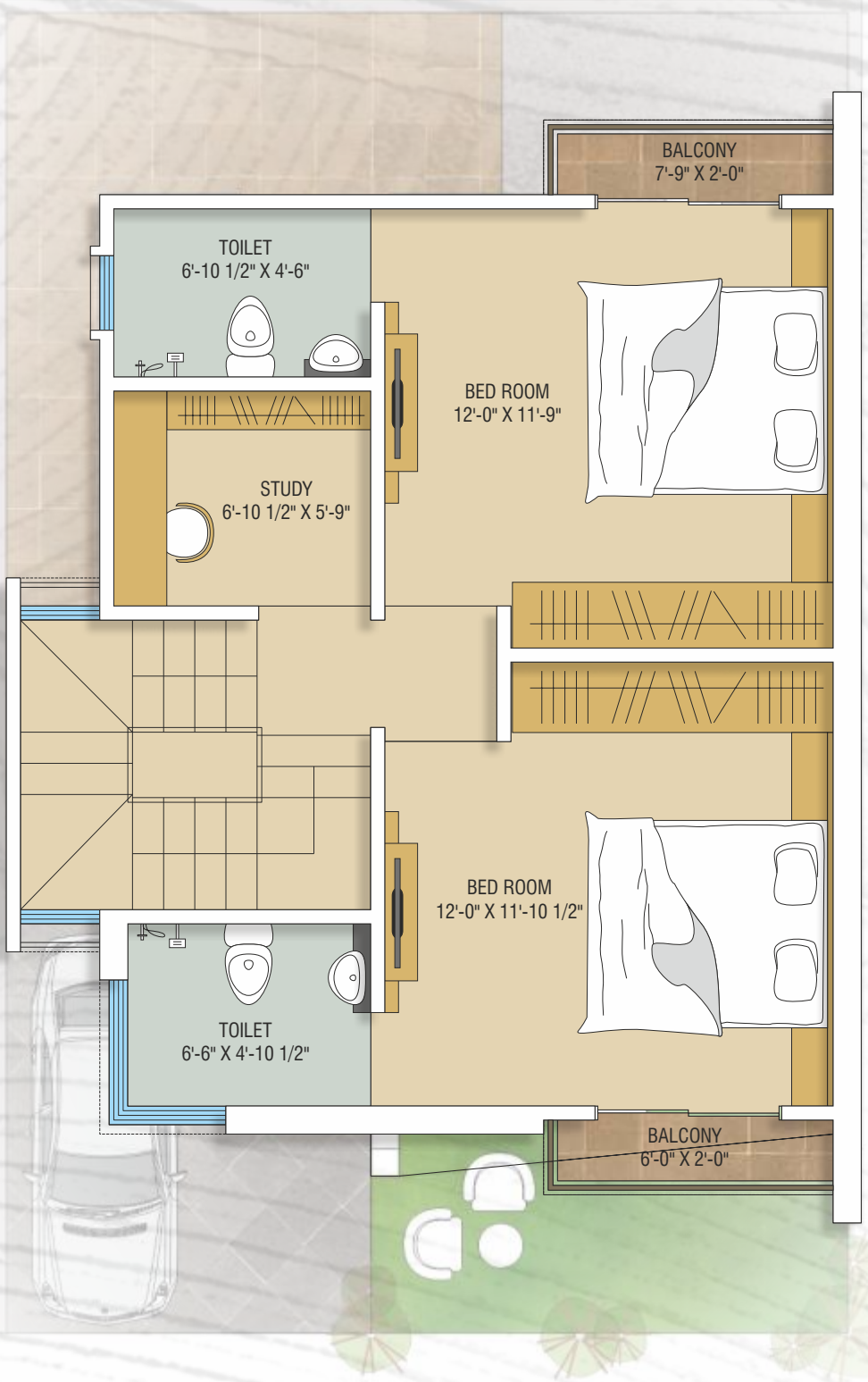
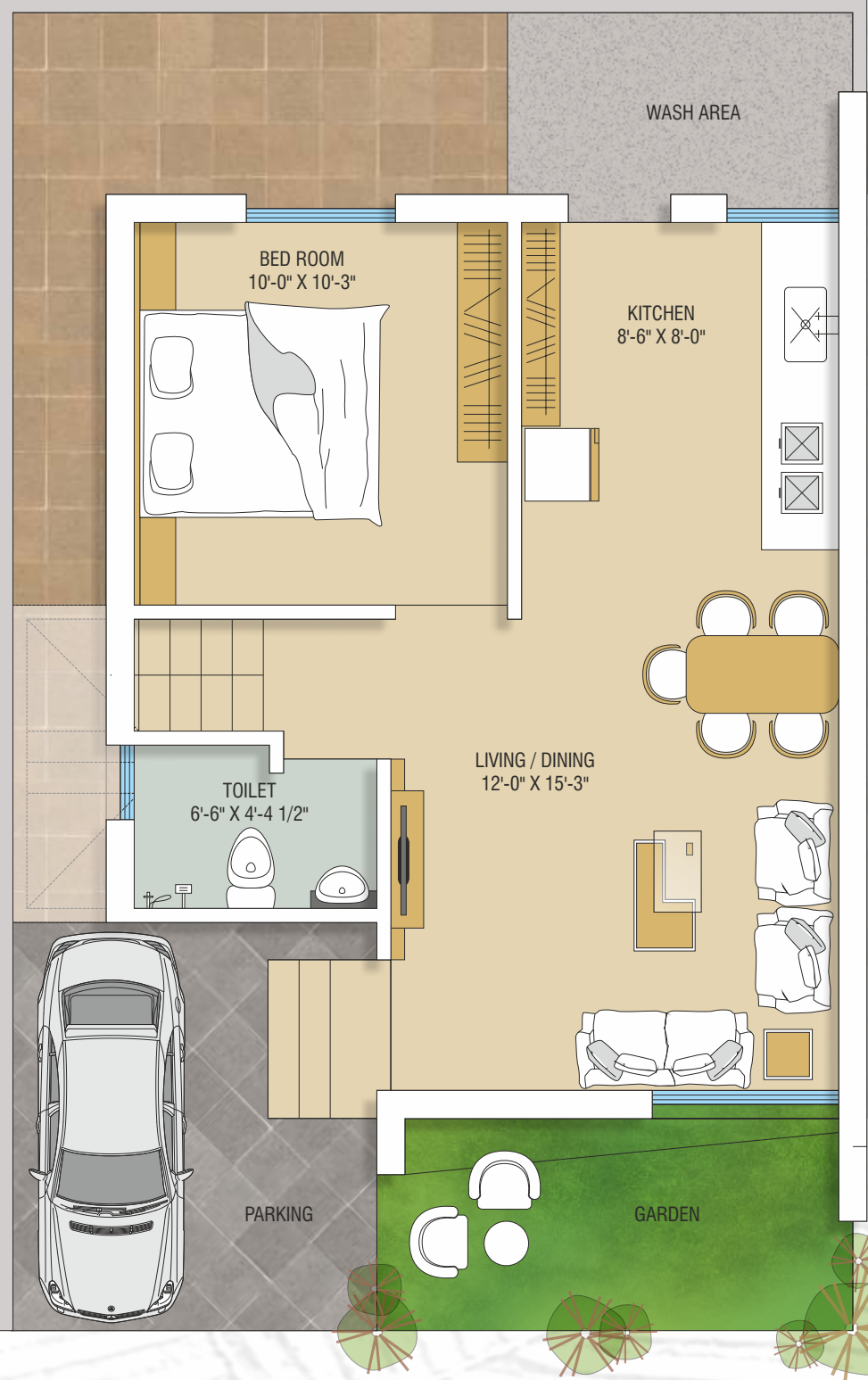


7.50 MT WIDE ROAD

FLOOR PLAN

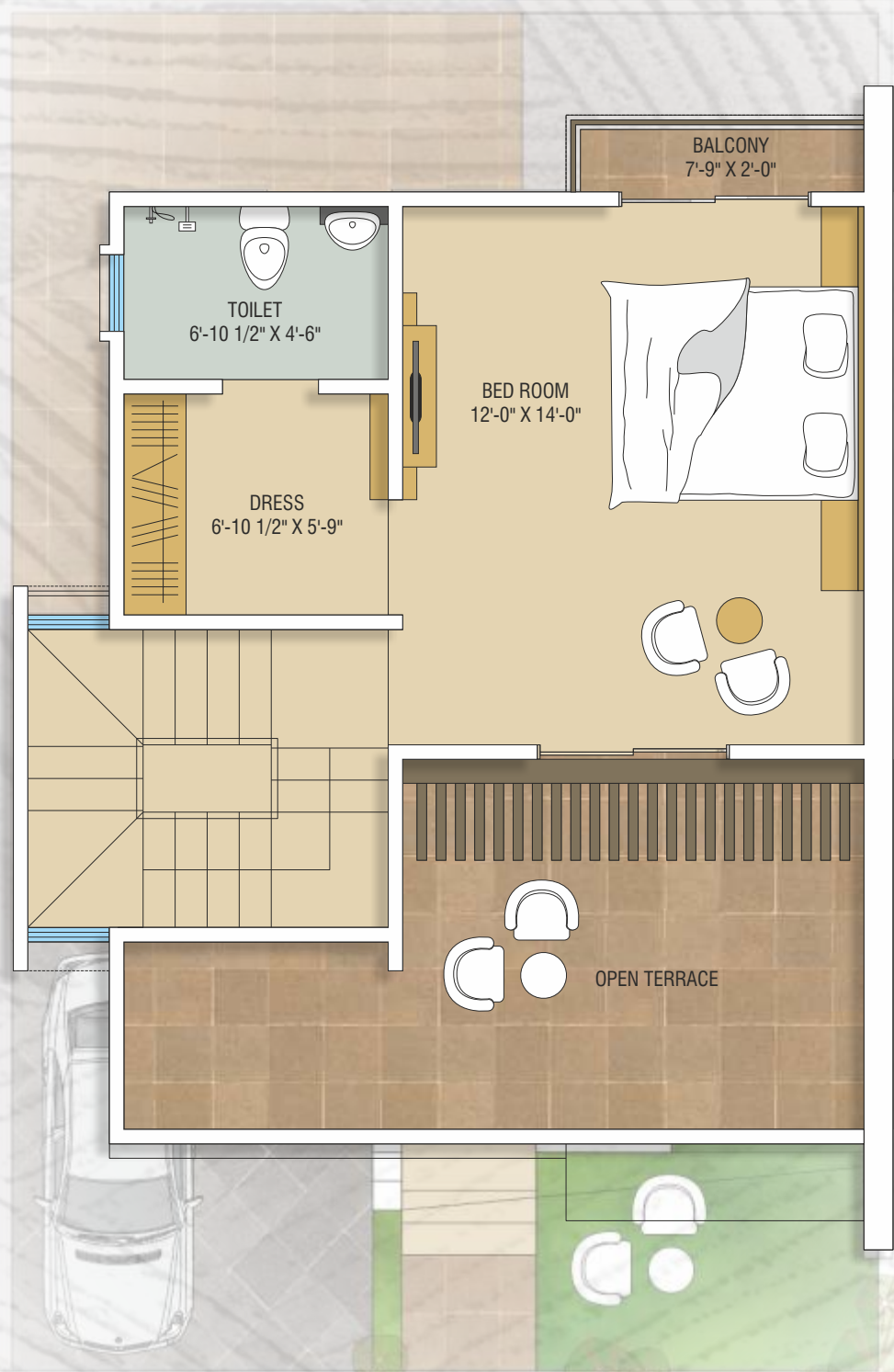
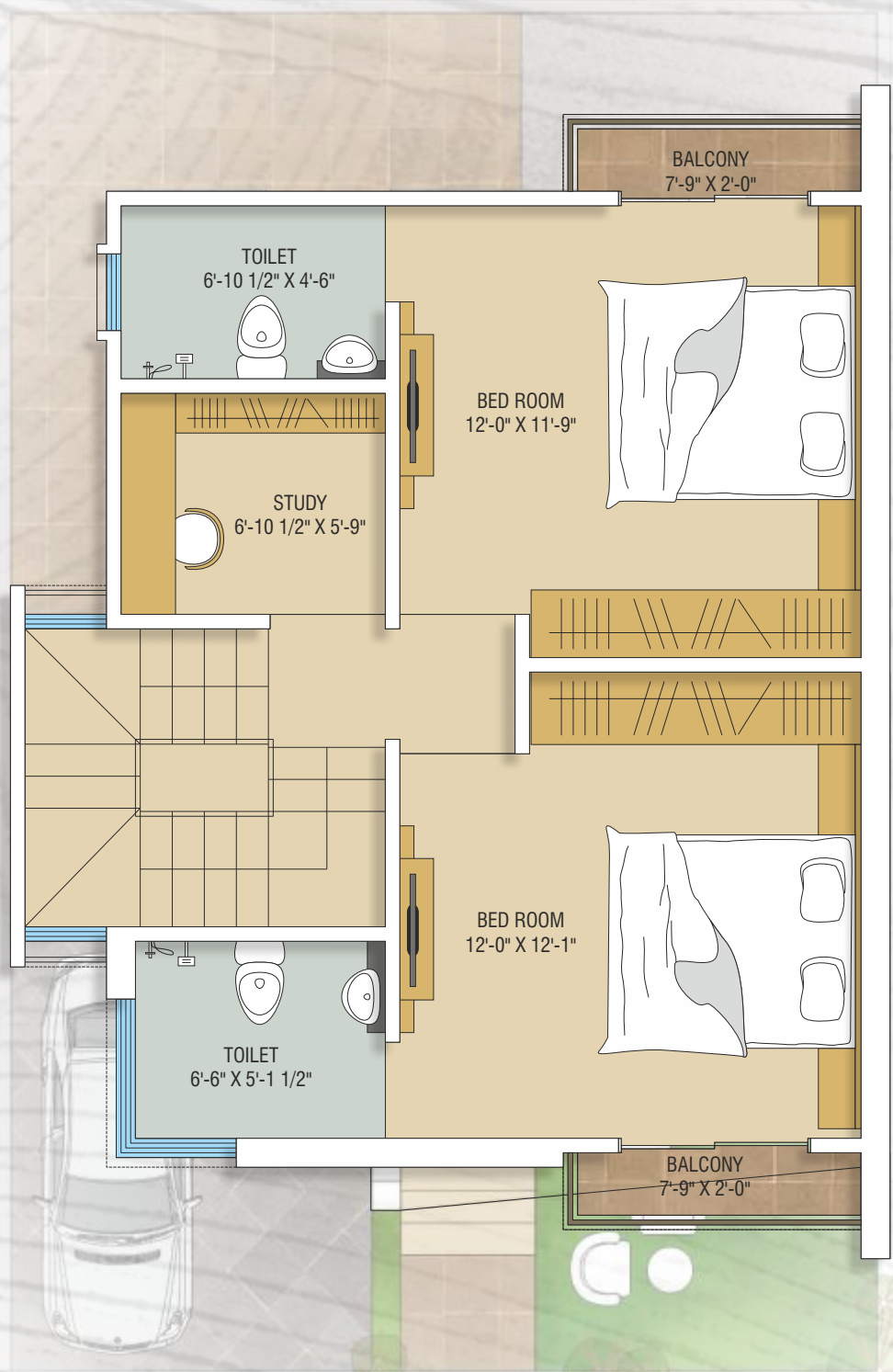
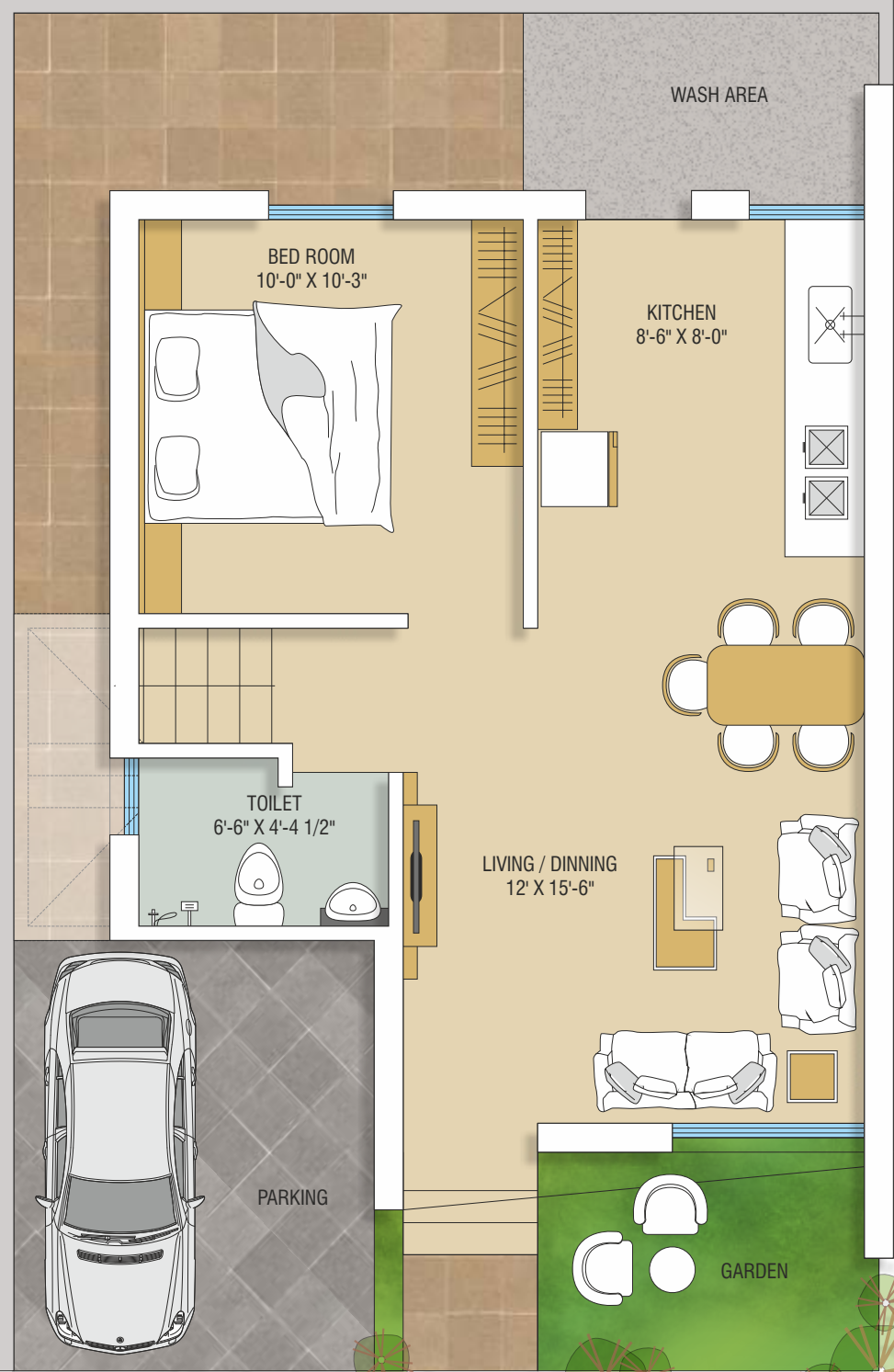


FLOOR PLAN





FLOOR PLAN





**SPECIFICATIONS**

- Structure :**  
Earthquake Resistance RCC framed Structure as per Structural Engineer Design.

**Wall Finish :**  
Inside : Smooth Plaster with Acrylic Emulsion Paint  
Outside : Double Coat Plaster with Exterior Paint.

**Toilets / Bath :**  
Designer bathrooms with fittings & vessels.  
Glazed tile up to ceiling, solar point in all bathrooms.
- Wall :**  
Internal & External Masonary Work with Bricks.

**Electrification :**  
Concealed copper wiring of approved quality, sufficient electrical points as per architect's plan. Inter-calling points / TV & AC points in all rooms, Underground Caballing in Whole Project.

**Kitchen :**  
Granite kitchen platform with SS Sink, Full glazed tiles up to slab level.
- Flooring :**  
Premium vitrified flooring, Parking Tile in Parking area, Kota stone in Back space.

**Doors :**  
Decorative main door & all internal doors of quality water-proof flush doors.

**Terrace :**  
chemical water proofing and china mosaic flooring.
- Windows :**  
Fully glazed windows.