



JV PARTNER



Aastha
Realinfo Private Limited



SITE ADDRESS

Bil - Chapad Road, Nr. Bil Village,
Off. O.P. Road, Vadodara - 391410.
Contact - +91 9978990338, +91 9687641719

CORPORATE HEADQUARTERS

Pacifica House, 4/5, Sigma- I,
B/h Rajpath Club, Near Mann Party Plot,
Bodakdev, Ahmedabad - 380 059
Ph: 9825041966 / 9898095732, Fax : 079-40027786

SMS : PACIFICA to 54242 • www.pacificacompanies.co.in • info@pacificacompanies.com

Ahmedabad - Vadodara - Deesa - Chennai - Hyderabad - Bengaluru - NCR

Residential | Senior Living | Townships | Hotels | IT Parks | Business Parks | Commercial | Plotted Development

A woman with dark hair, wearing a white long-sleeved top and a dark necklace, is reclining in a black wicker chair. She has her eyes closed and a peaceful expression, with her right arm raised behind her head. The chair is situated on a wooden deck. In the background, there is a building with a wooden door and a window, surrounded by lush greenery and trees. The scene is brightly lit, suggesting a sunny day.

LAVISH LIVING... at an exotic



TRUST, QUALITY & ETHIC

PACIFICA[®]
COMPANIES
Shaping real estate globally... since 1978

100

100

100

100

100

100

100

100

100

100

100

100

100

100

100

100

100

100





PACIFICA US

The beginning of Pacifica's journey of success took place in the United States of America way back in 1978. Since then, they have successfully developed and diversified their assets including hospitality, senior housing, multi-family, commercial development, land acquisition, residential development, debt acquisition and REO across 22 states in the US.

This diversity of experience has allowed Pacifica to confidently extend itself in any market or property type with its proven track record generating superior returns in all asset classes.

PACIFICA LATIN AMERICA

The Latin American real estate space, as a result of steady economic and demographic growth, offers a multitude of opportunities for those with a keen eye. Recognizing this, Pacifica is currently working to strongly position itself with an initial investment of \$400 million in a diverse range of asset classes.

Their first landmark in the region was The Calette Mall in Tijuana, Mexico, a mixed-use project, which we believe will become the most important type of development in the future.

100

100

100

100

100

100

100

100

100

100

100

100

100

100

100

100

100

100

LIFE BEYOND EXQUISITENESS... Welcome





DREAM... of a place close to city.

A space to unwind amidst the



100

100

100

100

100

100

100

100

100

100

100

100

100

100

100

100

100

100



GROUND FLOOR PLAN





FIRST FLOOR PLAN





GROUND FLOOR PLAN





FIRST FLOOR PLAN





GROUND FLOOR PLAN





FIRST FLOOR PLAN





GROUND FLOOR PLAN





FIRST FLOOR PLAN





GROUND FLOOR PLAN





FIRST FLOOR PLAN





GROUND FLOOR PLAN





FIRST FLOOR PLAN





GROUND FLOOR PLAN





FIRST FLOOR PLAN





SECOND FLOOR PLAN





GROUND FLOOR PLAN





FIRST FLOOR PLAN



100

100

100

100

100

100

100

100

100

100

100

100

100

100

100

100

100

100

PURE CLUBBING!





REPOSE... in the steady flow of

CLUB. INDULGE. REPEAT.



100

100

100

100

100

100

100

100

100

100

100

100

100

100

100

100

100

100



YOUR HEALTH... is our we



MOMENTS... when you need to be with you



LET US... make your life more l

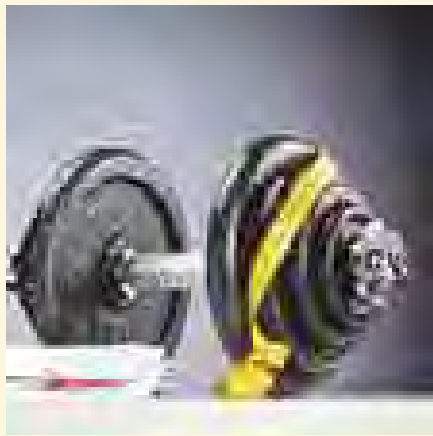
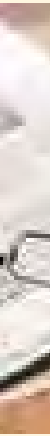




COME, RELAX in our world. Make

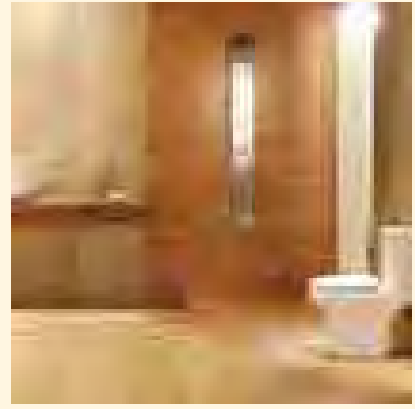
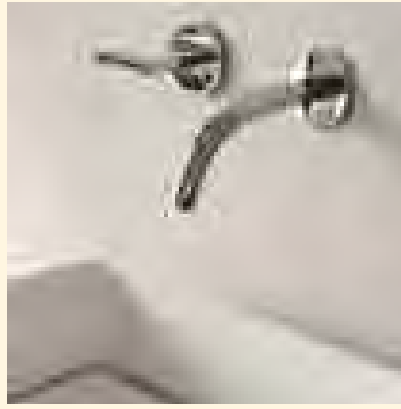
BEAUTIFY YOUR SENSE





AMENITIES WITHIN CLUB C

SPECIFICATIONS



STRUCTURE

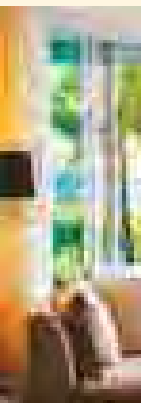
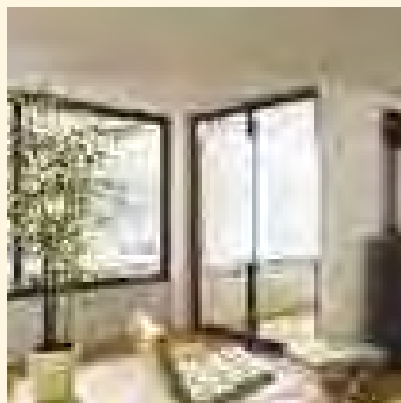
Composite RCC framed and load bearing wall structure
230 mm brick masonry for Exterior walls, some interior walls & Double Coat Plaster
115 mm brick masonry for some Interior & Single Coat Plaster

OPENINGS

Main door Miranti frame or Equivalent with both side Veneer finish Flush doors
Bed room door - Miranti frame or Equivalent with enamel paint Flush doors
Toilet door - Miranti frame or Equivalent with enamel paint Flush doors
Balcony - French door UPVC sliding Doors
Windows - UPVC sliding Windows
Ventilations - UPVC frame with louvers & exhaust provision

FLOORING & OTHER FINISHES

Living & Dinning - Vitrified tiles (600mm X 600mm)	2. Wall - Vi
M.Bed room - Vitrified tiles (600mm X 600mm)	3. Sink - S
Bed rooms - Vitrified tiles (600mm X 600mm)	Balcony &
Kitchen - Vitrified tiles (600mm X 600mm)	Toilet Floo
1. Platform Granite - Black Galaxy	Toilet dade



LOCATION

