



DESIGNED BY GOD
PLANNED BY MAN

A line of two-dimensional space with a total height of about 100 feet. The long line, only 10 feet wide, is made of a series of concrete slabs that are placed on a very thin base. The slabs are placed on a very thin base and are held up by a series of concrete pillars that are placed on a very thin base.





A PRIVILEGE FOR LIFE.

At "Residence" you will find the best of everything. The finest materials and finishes, a full complement of amenities, all coming together to provide you with a residence that breathes luxury.





4. BEAUTIFUL LIFE

Only a true lifestyle could transform this beautiful landscape into a beautiful life, with a modern design, a high-quality environment and high-quality services that meet the needs of all residents. In the end, there will be a beautiful life in perfect harmony, intimacy and brotherhood.

AMENITIES

GENERAL FACILITIES:

- 24hr. Camera for 24hr. Security
- Locking Bagroom
- 24 Hours Front & Court Bldg.
- Multiple Welcome Centers
- 24-hour Play area / Arcade

LEISURE FACILITIES:

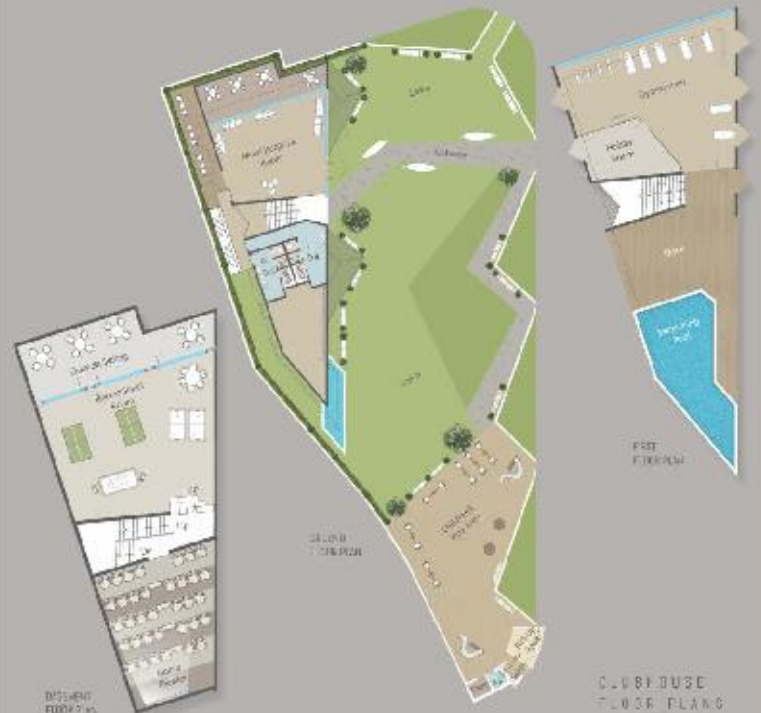
- 24-hour Food & Beverage
- 24-hour Fitness Center
- 24-hour Spa
- Ladies & Gents Steam Rooms

GAMES & SPORTS FACILITIES:

- Indoor Soccer Hall
- 90' x 60' Pool
- Community / Multi-Club
- 18' Air Hockey Room
- Billiard Room
- Deck / Shook Facing the Pool
- Trackers Park

IDEAL FOR CELEBRATIONS:

- Multi-Purpose Hall
- Party Lounge



PALENA LIFESTYLE BY DARSHANA CELESTIAL

"Lifestyle is a realization of what you do not have"

As a Developer, Celestial, specialises in providing the best for its clients. In every aspect, from the concept, planning & layout to delivery, we're always ready to be there!



EXPECIFICATIONS

STRUCTURE

• All RC/FB structure as per structural engineer's design.

FLOORS

• Tiles in Master Guest Lounge, Kitchen and Livingroom
• Wooden Flooring in Master Bedroom
• Marble Tiles in all bedrooms.

STAIRS

• Ceramic material platform with S.S. Skirting against the wall. Glass height
• Glass handrails covered with SS and safety glass for the top.

TOILET

• Ceramic tile floors with premium quality fittings & sanitary
• Glass the doors with Glass height.

WATER FINISH

• Exposed Glass Handrails with SS Glass Fixing Treatment

ELECTRIFICATION

• Concealed copper wiring and branded modular switches with sufficient points.

DOORS

• Main Door: High quality powder coated door with window opening in both sides.
• Entry Door: High quality powder coated with finished both sides.

WINDOWS

• Aluminium Main window UPVC Windows with Safety net.

PAINT & FINISH

• Internal smooth finish plaster with Silk Putty Primer and External Smooth Coat Putty with Acrylic Coating.





RETHINKING PLANNED

If you are thinking about the future, we will provide you with the best of both worlds. You can enjoy the best of both worlds. You can enjoy the best of both worlds. You can enjoy the best of both worlds.



VALUE ADDITIONS

- 4m x 1.5m Automatic Gate
- 3.5m x 2m Security with Double Gate
- Interlocking roads with drainage & decorative paving
- 2m x 1m Solar Hot Water
- 12 x 6 Meters Pooling
- 24 Hours water supply
- Multiple items on call and in stock for delivery
- 1000sqm ground for 400sqm of house
- 1000sqm of 200sqm of 100sqm
- 1000sqm of 200sqm of 100sqm



B
TYPE



GROUND FLOOR PLAN



FIRST FLOOR PLAN



SECOND FLOOR PLAN

W - D - R - E - A - D



MAKE YOUR LIFE MORE
LUXURIOUS

Delhiaram Colaba is a unique living space in a smaller colony
with the best views of the city. Don't miss this great view!



