

Project By



Site Address :-

Opp. Tirthak Bungalows,  
B/s. Devam Heights,  
Waghodia-Dabhoi Ring Road,  
Vadodara-390025

Booking Contact

98982 85628

99740 16344

Architect

Disha Architect

Structure Consultant

Adstruct

### Payment Mode

20% at the time of booking

10% on parking level

10% on each slab level

10% on plaster level

05% on flooring level

05% on finishing level



*Excellence Without Compromise*



**DEV  
RESIDENCY**  
2 BHK LUXURY APARTMENTS



We Request :- Possession will given after one month of settlement of all accounts • Documentation charges, service tax, municipal house tax & common maintenance charges will be extra • Any new central or state government taxes, if applicable shall have to be borne by the clients • Extra work shall be executed after making full payment • Continuous default payments leads to cancellation • Architect / Developers shall have the right to change or raise the scheme or any details herein and any change or revision will be binding to all • Refund in case of cancellation will be made within 30 days from the date of booking of new client only • Administration expense of 20,000/- & the amount of extra work (if any) will be deducted from refund amount • In case of delay of VUDA or MGCL activity, it shall be unitedly faced • While ever reasonable care had been taken in preparing this brochure, the organizers are not responsible for any inaccuracy in this contents • All plans, information and specification are subject to change • This brochure is not a part of a legal documents.



## Specification

**Structure** :- RCC framed structure & brick masonry, as per structural engineer's design

**Walls** :- Interior Smooth plaster with wall putty & good quality paint. Exterior Double coat plaster with 100% acrylic exterior paint

**Windows** :- Powder coated Aluminium sliding windows with Reflector glass & M.S. Safety Grill.

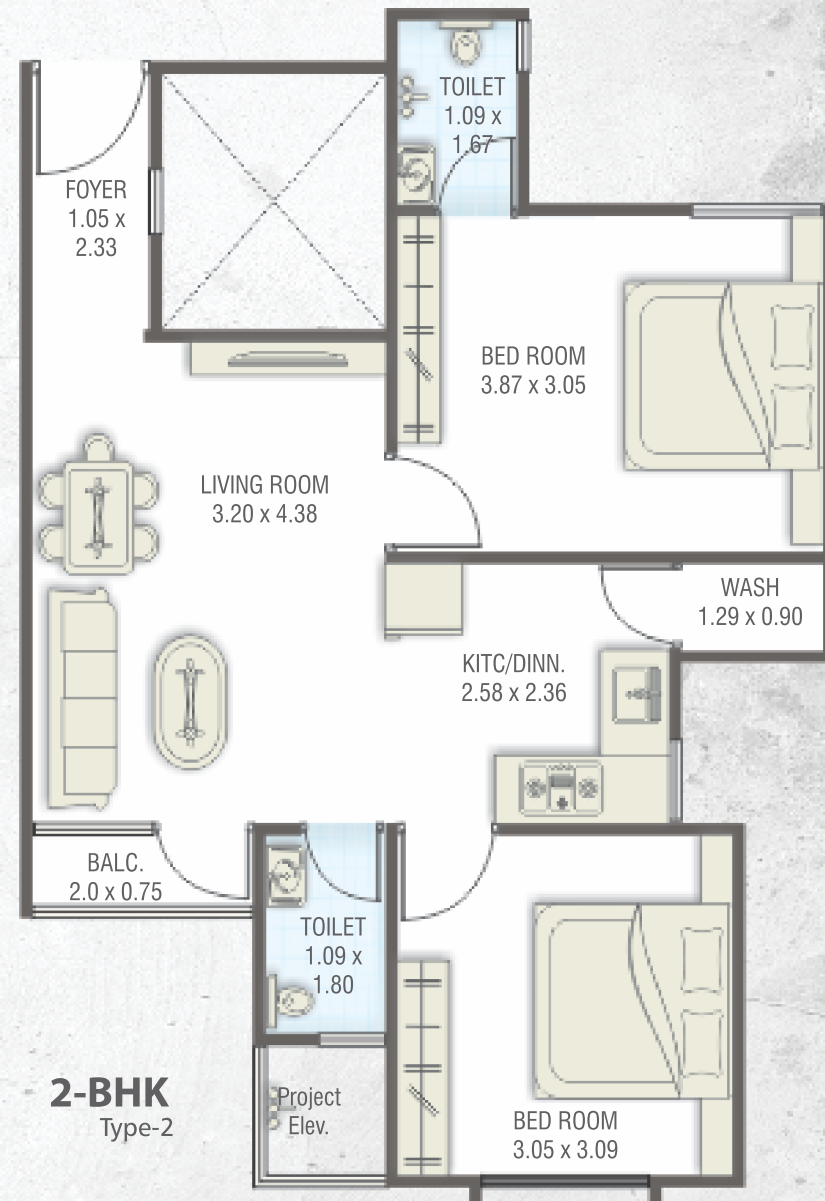
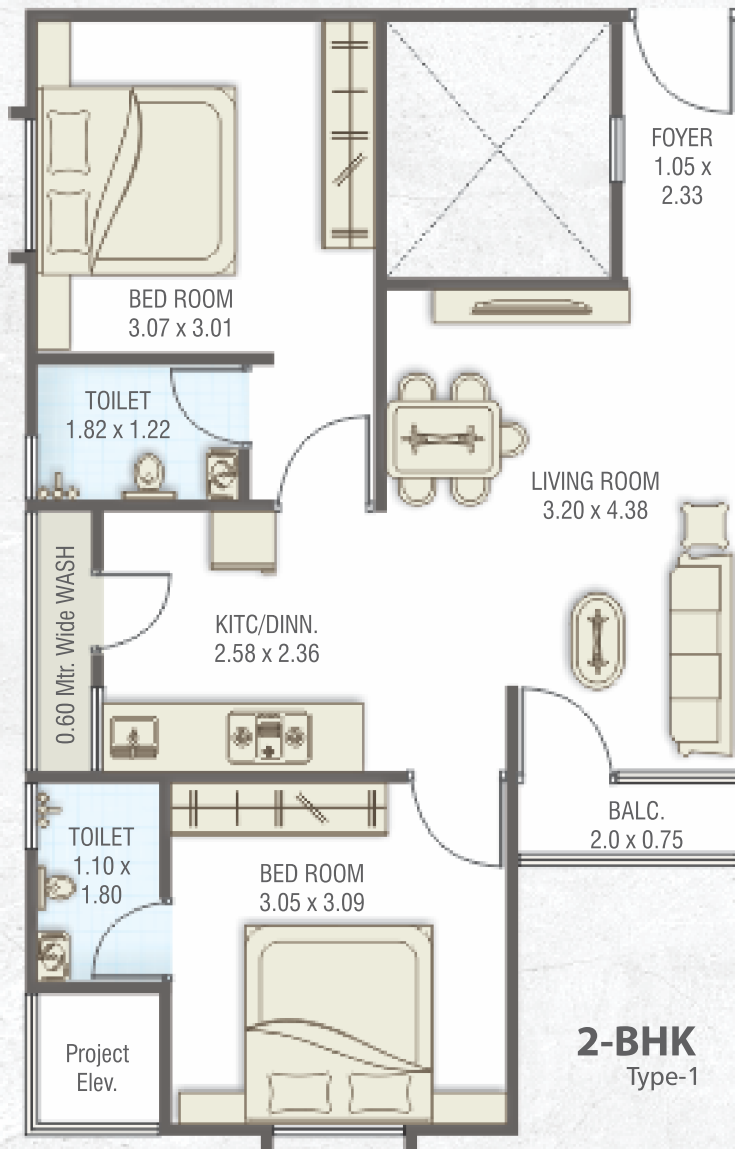
**Doors** :- Attractive main door with standard safety lock & other decorative fittings

**Flooring & Tiling** :- 2x2 Vitrified Tiles Flooring, 18x12 Glazed tiles on bathrooms wall upto lintel level, Glazed tiles up to Lintel level in kitchen, Granite platform in Kitchen with stainless steel sink

**Plumbing & Sanitary** :- Internal Plumbing concealed with Standard Quality fittings

**Electrical** :- Concealed copper wiring ISI quality modular switches, TV point in living, AC point in Master Bedroom, Refrigerator Point in Kitchen, Washing Machine Point in Washing Area

**General** :- China mosaic flooring on terrace.



## Amenities

### Parking

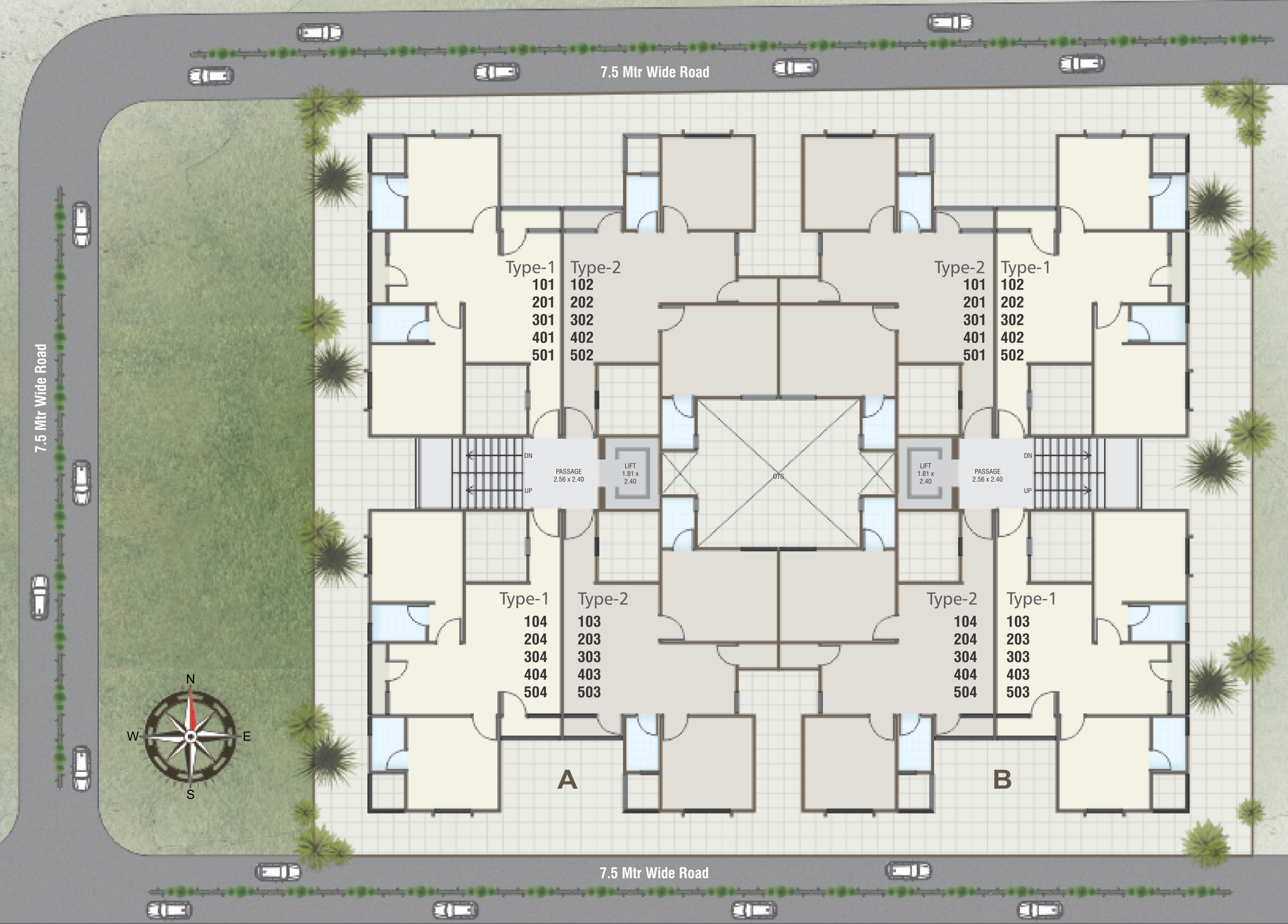
- Ample Parking Space

### Convenience

- Standard quality Elevator

### Others

- Underground & Overhead Tanks for 24 hours water supply, water pump with sensor
- Attractive Name Plate
- Electrical Meter box
- Latter Box at Parking Area



Common Plat