

KEY PLAN



FORTUNE
Skyline

Developer:
Vision Developers

Site Address: Fortune Skyline,
Opp. Kamlanjali Gateway,
Near Cloud 9, Kalali Chapad Road,
Kalali, Vadodara 390012.

Contact: 97252 02870
Email: fortunestyline2@gmail.com
Website: www.fortunedeveloper.co.in

Architect: Era Associates (9998198160)
Structure Consultant : Zarna Associates

2&3 BHK SPLENDID FLATS



A PERFECT ABODE FOR YOUR FAMILY!

Fortune Skyline is envisioned to create a perfect living space for the elite residents of Vadodara. Located in the prime residential locality, it shall proudly be the best building of Kalali.

Conceptualized to offer a comfortable lifestyle to its residents, the 2-3 BHK apartments shall suit your requirements perfectly. Spaciously planned and neatly finished, these living spaces shall be sheer delight for our members.

A host of lifestyle amenities and leisure facilities add up to create blissful living. This premium development is an offering from a reputed team of developers, renowned for their ethical business practices, quality construction and timely completion of projects.

An investment in Fortune Skyline will be an investment in your family's happy future!



AMENITIES



Club House



Fully Equipped Gym



Indoor Games



Landscaped Garden



MDU Based TV Connection



Power Backup For common area



CCTV Surveillance



Rain water harvesting



Solar Roof Top

SPECIFICATION

FLOORING TILES: Double Charged Vitrified Flooring in Living, dining, kitchen and all the bedrooms. Ceramic tiles in bathrooms.

STRUCTURE: Well-designed RCC structure as per structural engineer's design.

KITCHEN: Granite platform with SS kitchen sink and designer tiles up to lintel level over the platform.

BATHROOMS & TOILETS: Western concept designed toilets. Concealed plumbing with premium brand fittings. Geyser point in each bathroom. Anti-skid ceramic tiles flooring & wall tiles up to lintel level.

PLUMBING: Wall concealed CPV/UPVC plumbing fitting. Washing machine point in wash area.

DOOR & WINDOWS: Decorative main door with standard safety lock and fittings. All other internal doors are flush doors with laminates. Aluminum section windows with reflective glass, safety grill & mosquito net.

ELECTRIFICATION: Concealed copper ISI Wiring and good quality modular switches with sufficient points. AC point in all bedrooms. MCB in main distribution board.

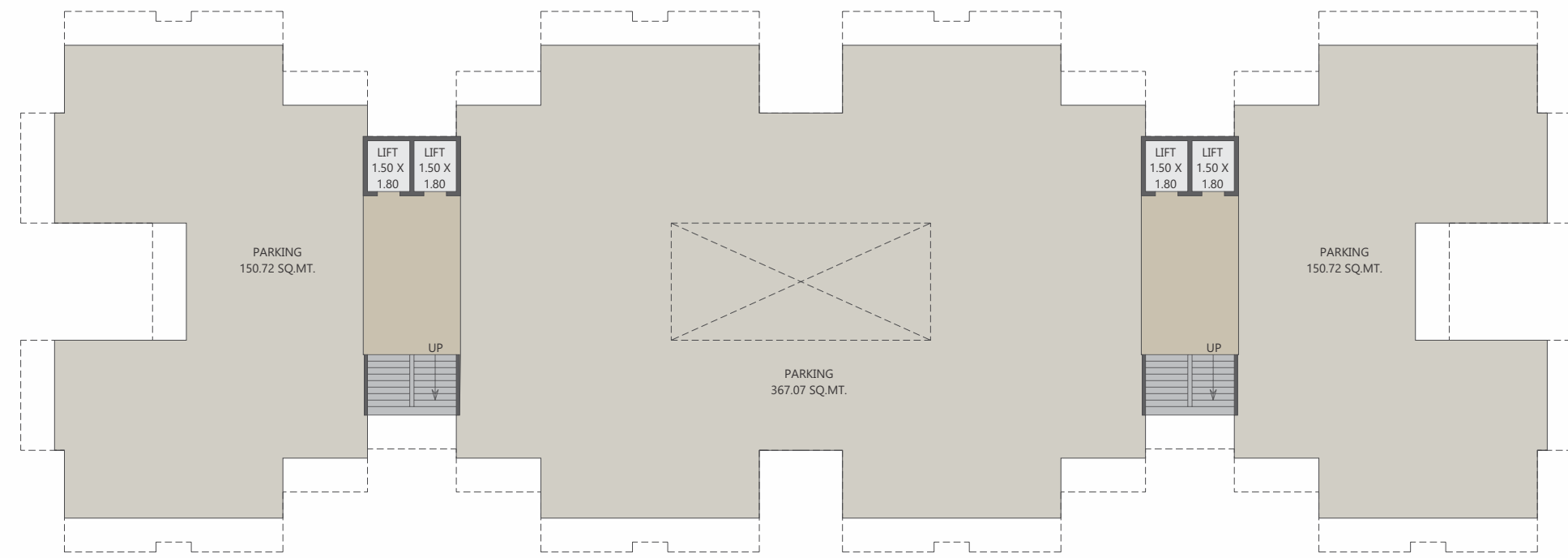
FINISHING: Mala finish plaster with double coat wall putty and primer on internal walls. External double coat plaster with weather proof paint.

TERRACE: Heat & waterproofing treatment on terrace.

Layout Plan



TOWER-A



Ground Floor Plan

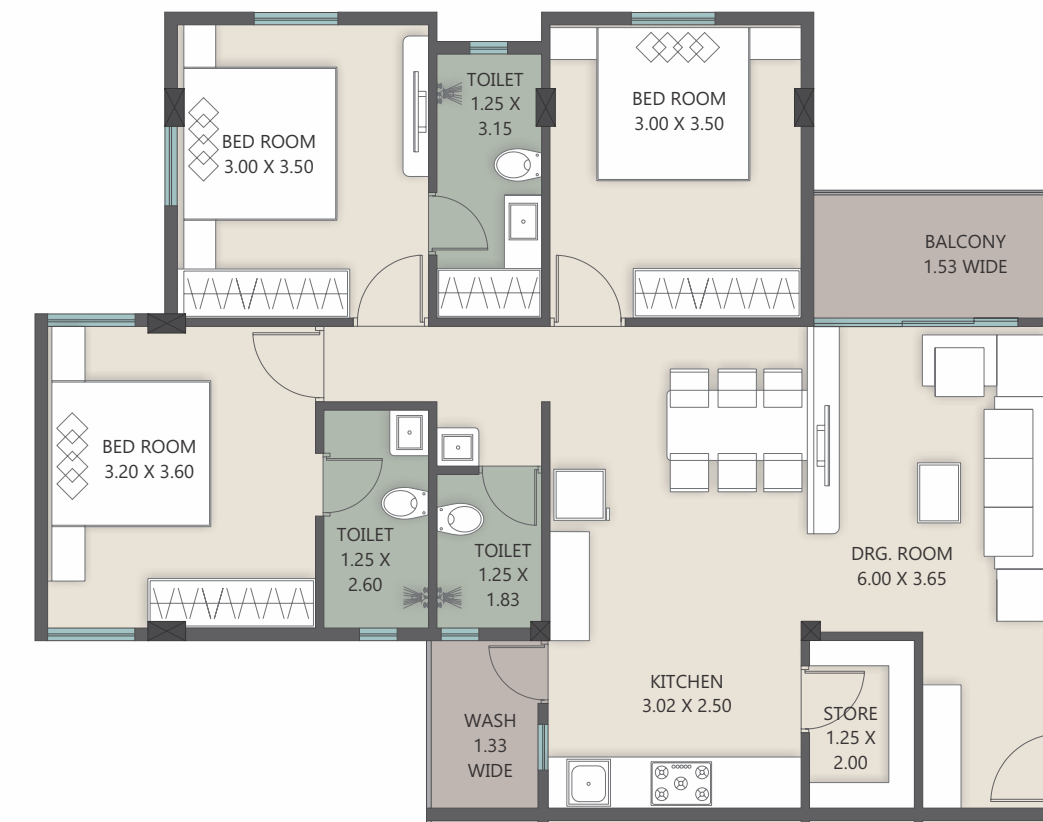


Ninth Floor Plan

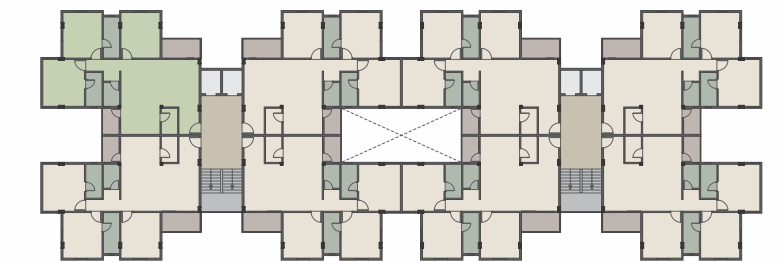
Carpet Area: 82 Sq.Mtr.

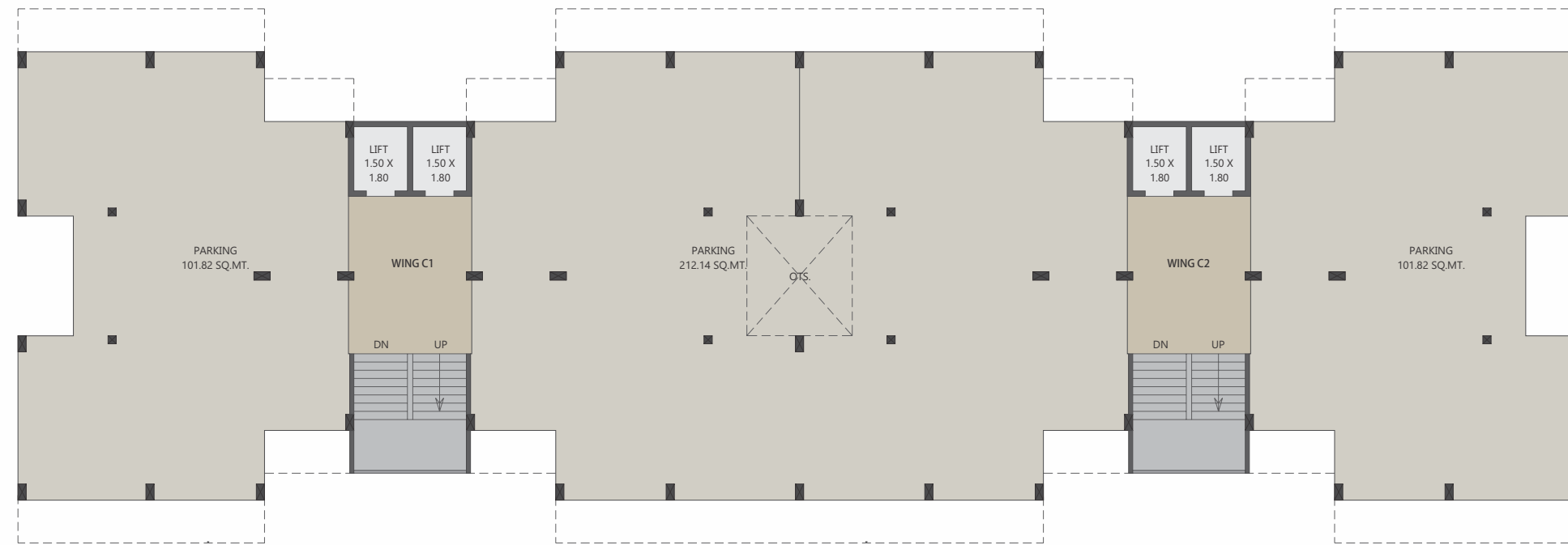


First Floor Plan



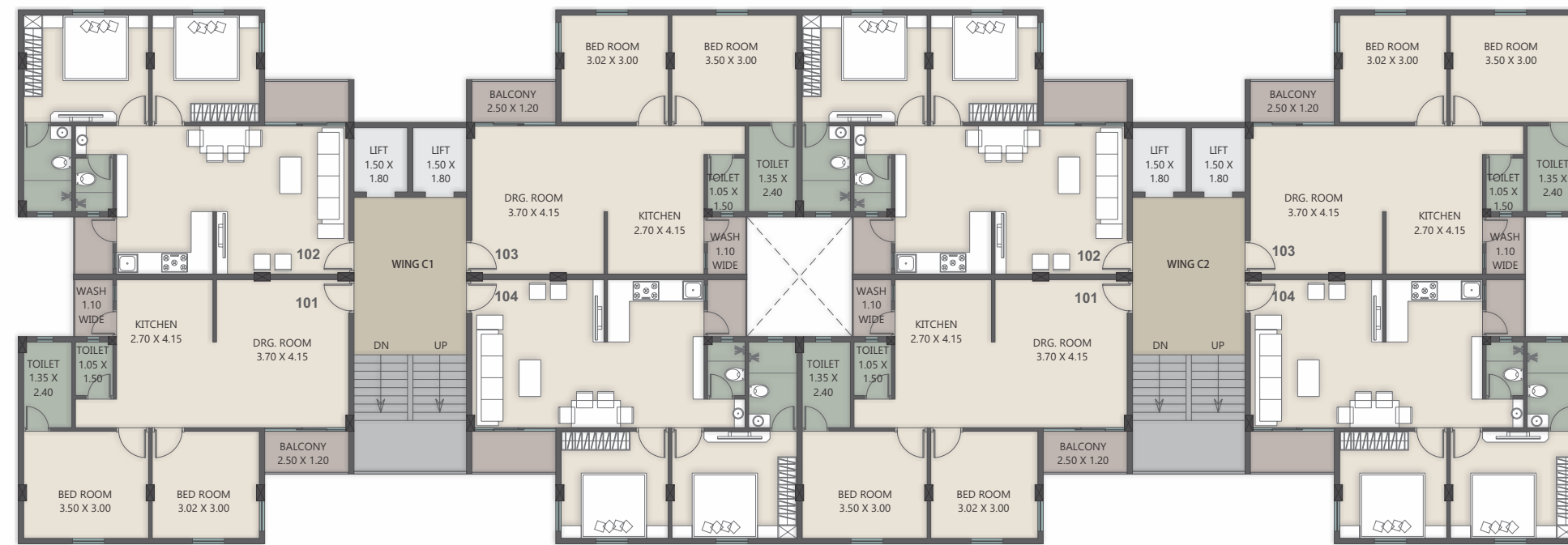
3BHK FLOOR PLAN





Ground Floor Plan

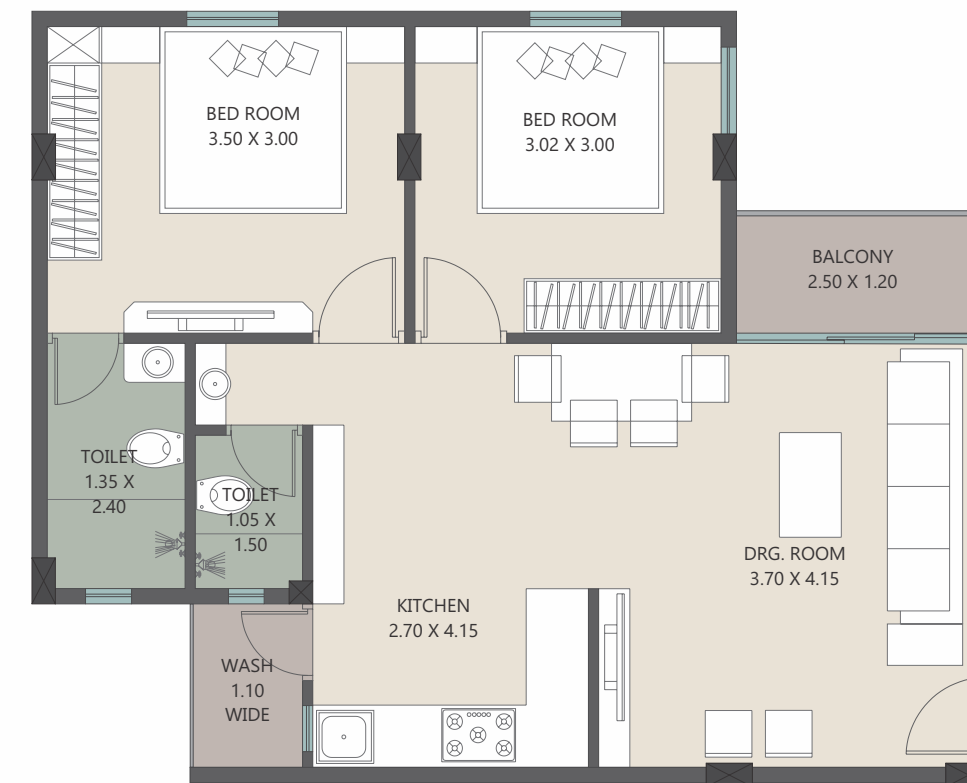
Carpet Area: 53.67 Sq.Mtr.



First Floor Plan



Ninth Floor Plan



2BHK FLOOR PLAN

