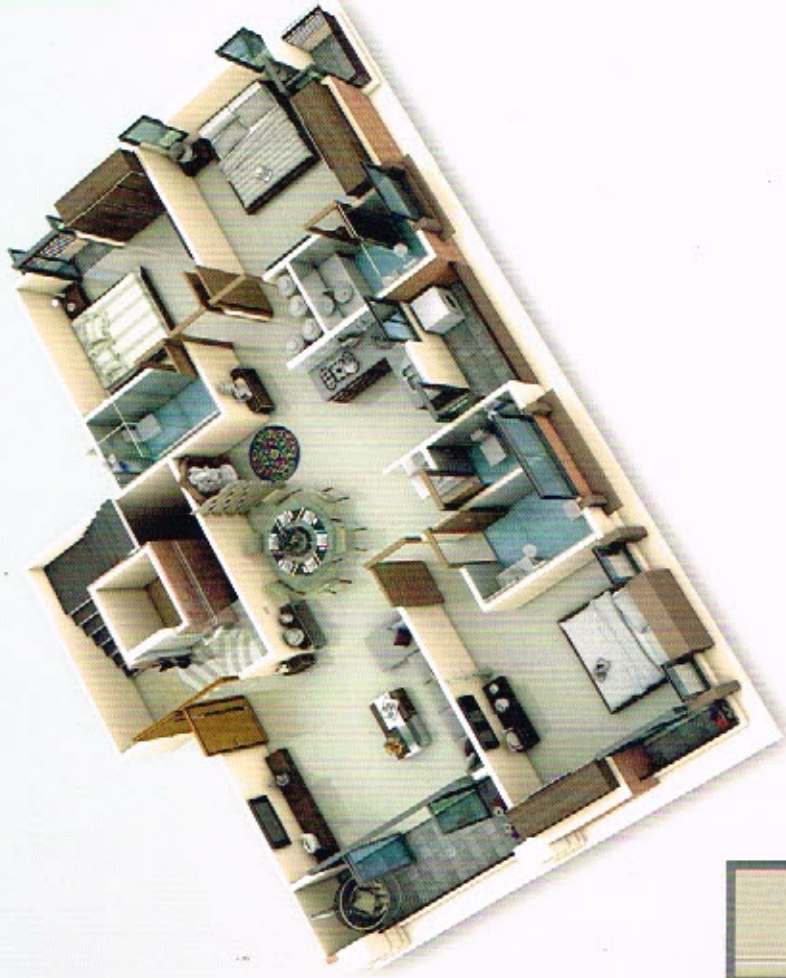


1st to 3rd Floor {Typical}



Common Amenities

- S.S Cabin Elevator with Auto door mechanism of reputed brand
- 1 Car Allotted Parking Space with Decorative Paving
- Wire free look
- Water proofing for terrace
- 24 hrs Common bore
- Water pressure system
- Fully Paved Parking with Margin Areas
- Common Toilet for Servant and Drivers
- Plantation in front of building
- Underground & overhead tank for water
- 24 Hours Gated Security & with access control
- Elegant Foyer & Waiting area at Ground Floor
- Solar Water Geyser
- AC Conduit Piping / Points
- Lounge on Terrace for Covered Sitting for Events

In-house Amenities

- Video Door Phone
- Concealed Anti-termite piping
- Concealed Geyser piping in all bathrooms
- RO Water Purifier
- Provision for washing machine inlet
- Concealed internet point

Specifications

Structure: Earthquake resistant RCC framed structure as per structural engineer's design.

Paint: Internal wall finished with good quality putty. External wall finished with Weather-proof Paint.

Flooring: Designer Vitrified Tiles from reputed brand for floor and Anti-Skid floor tiles in balcony.

Kitchen: Granite Platform with full dado tiles. SS Sink with drain board.

Doors: Attractive Main Door with branded lock. Internal Flush Doors with attractive laminates.

Windows: Aluminum Windows with safety grill, semi-reflective glass & mosquito net.

Bath: Designer anti-skid tile flooring. Branded sanitary ware. Bath fittings from Jaguar (or equivalent).

Electrical: ISI Concealed copper wiring with reputed brand modular switches. Adequate light points for refrigerator, AC, washing machine, Microwave oven & geyser points. TV, telephone point in Living Room & Master Bedroom.

Security: 24hrs gated security. Video phone with intercom facility.





Green EMERALD



Developers:
Prime Infrastructures

Promoters:

Priyanka Group

Architect: Ruchir Sheth
DESIGN STUDIO
architects & interiors

Structural Consultant:
Zarna Associates

Ph.: +91 81418 11451, 98250 40073, 98258 04513
Email: info@priyankaconstructions.com
www.priyankaconstructions.com

Site: "Green Emerald", Near Greenwoods,
New Alkapuri, Gotri - Sevasi Road, Vadodara



Payment Schedule: At the time of Booking 25% | On Plinth Level 15% | On Ground Floor Slab Level 15% | On First Floor Slab Level 15%
On Plaster Level 15% | On Flooring Level 10% | Before Possession 05%

Notes: Possession will be given after one month of settlement of all accounts. * Documentation charges, Service Tax, Municipal House Tax & common maintenance charges will be extra. * Any new Central Govt. State Government, Taxes, if any leviable, shall be on the basis of the membership. * It is to be noted that all the associated office work is done on the basis of the membership.