

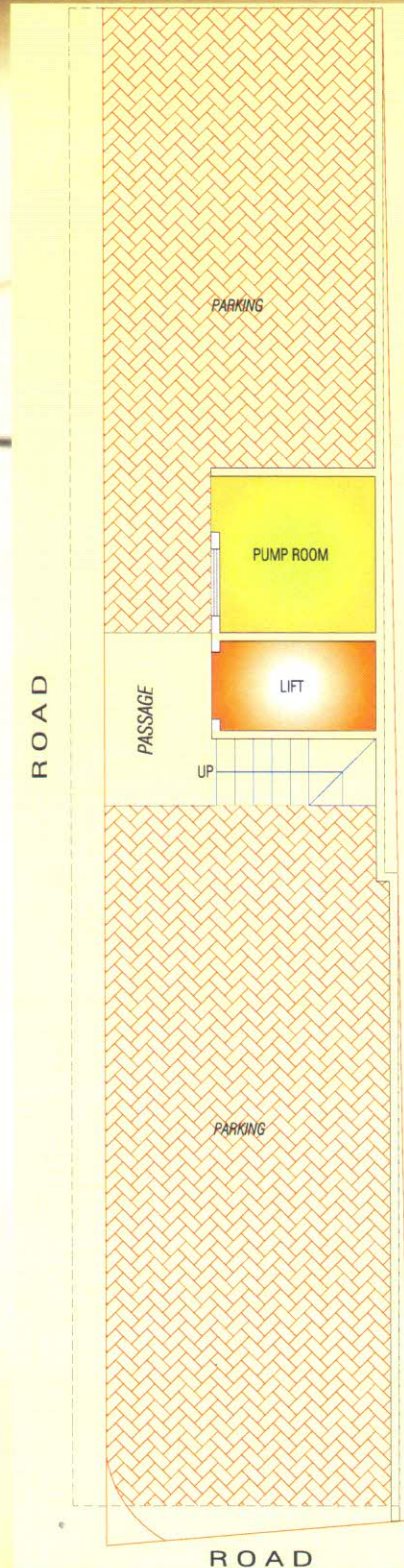
1 BHK Luxuries Flat

Krishna

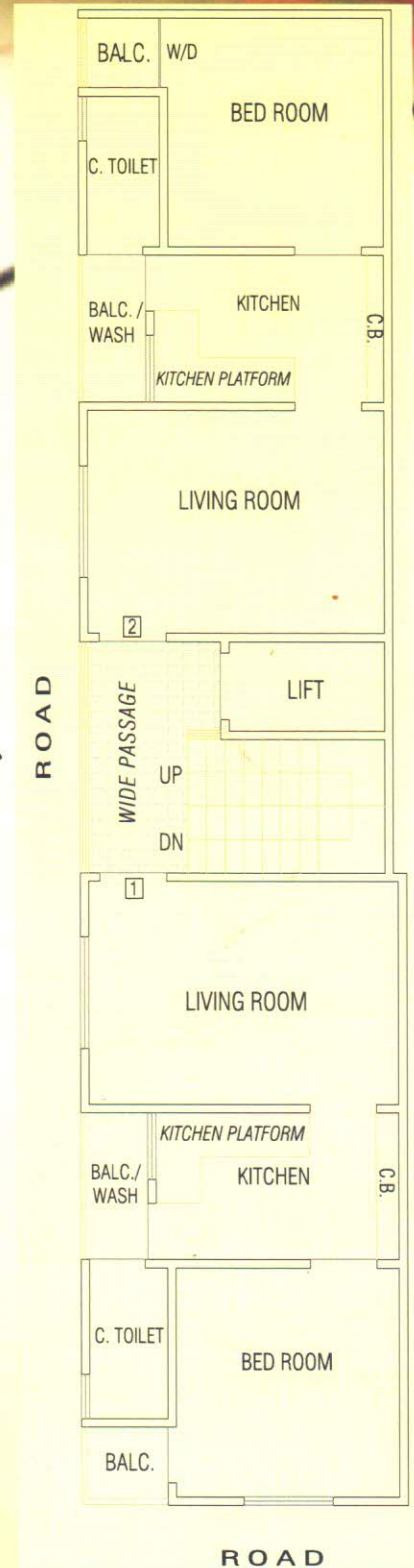
Avenue

Lalbai No Khacho, Andhro Khuno, Ghadiyadi Pole, Vadodara.

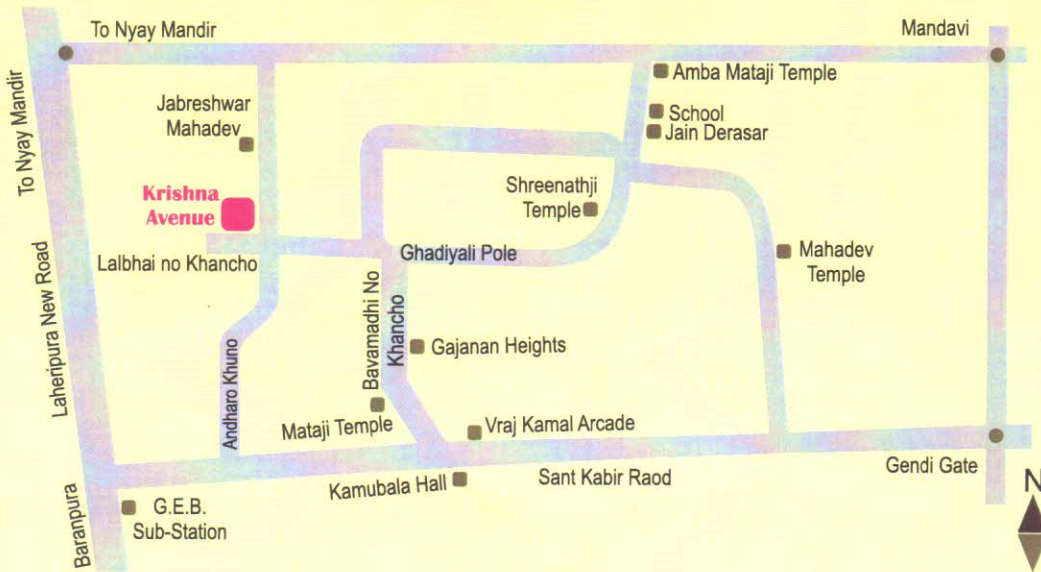
Ground Floor Plan



Typical Floor Plan



Key Plan



Developers :
Krishna Developers

Site :
**Laibhai No Khancho,
Andhro Khuno, Ghadiyali Pole,
Vadodara-390 001.**

Contact :
**Gautam K. Shah
9898 88 76 06**

Planner :



AMBICA CONSULTANTS

Structure :
Dhrumesh Shah

SPECIFICATIONS

- ❧ **Construction** : Earthquake resistant R. C. C. frame Structure & Brick masonry work as per architects design
- ❧ **Flooring** : Vitrified Flooring in all rooms. Black granite kitchen platform with S.S. sink and glazed tile up to lintel level.
- ❧ **Electrification** : Concealed copper wiring of approved quality with TV., Refrigerator, Geyser points & A. C. point.
- ❧ **Plumbing** : Hot & Cold plumbing with shower & Geyser point in Bathrooms.
- ❧ **Doors & Windows** : Decorative main door & all other flush doors with wooden frames. Fully glazed powder coated aluminum windows with MS safety grills.
- ❧ **Finishing** : **Inside** : Smooth plaster with Emulsion
Outside : Sand face plaster with Exterior paints.
- ❧ **Parking** : CC TV Camera.

Note :

- Stamp Duty, Registration charges, Legal Charges, Any type of Government levies, GEB & Maintenance Deposit Charges shall be borne by purchaser.
- Any Additional Charges or duties levied by the Government, local authorities during or after the completion of the scheme will be borne by the purchaser.
- In the interest of continual developments in design and quality of construction the developer reserve all purchasers shall abide by such changes.
- Charges/alternation of any nature including elevations, Exterior color scheme of the apartment or any other charge affecting the overall design concept an outlook of scheme are strictly NOT PERMITTED during or after completion of the scheme.
- In case of delay in services by authority, developer will not be responsible.
- Possession will be handed over after 45 days of settlement of account.
- Continuance default payment leads to cancellation charges will be Rs. 20,000.

This Brochure is only for display and information of scheme and it will not treat as a legal document.