

Developers : **KRISHNA INFRA**

Site Address : Krishna Skyvillas,
Nr Sky harmony, Besides Cygnus School,
Behind Motnath Mahadev, Nr Harni Sama Link road,
30m canal road , Harni TP 1, Vadodara

WE ARE ALSO ON SOCIAL    

Ph. :
Email : krishnagrouppvtltd@gmail.com
Website : www.krishnagrouppvtltd.com

Architect : Harsh Pandya

Design by



Structure



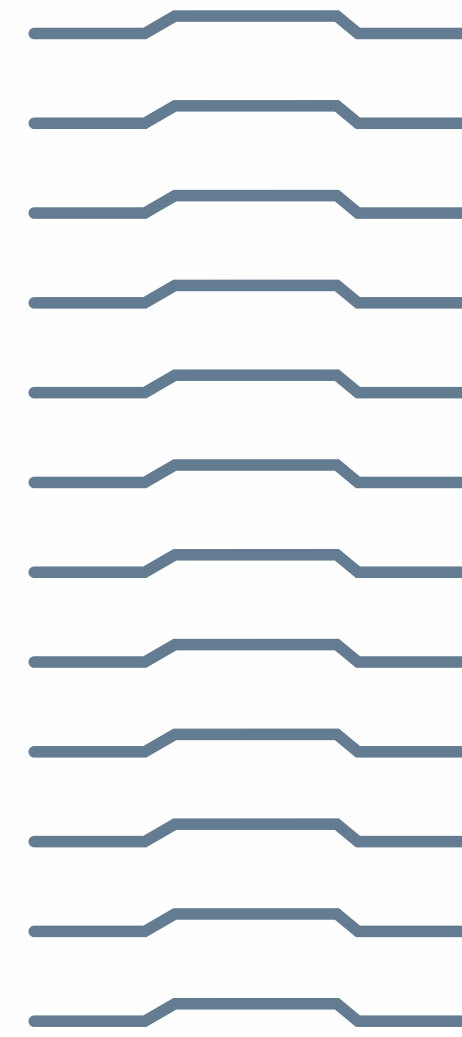
Mep



Plumbing
Consultant

Electrical
Consultant

Notes - The developers reserve their rights to make any additions, alterations and amendments as may be necessitated from time to time at their discretion. - Maintenance Deposit, Document Charges and Municipal Charges to be paid extra. - Any other state or central taxes shall have to be paid extra as and when applicable. - Any external changes in elevation shall not be permitted. Additional work (if any) will be carried out after receiving full payment in advance. - Possession will be given after one month of settlement of all dues. - The developers shall not be responsible in case of delay in water supply, light connection, drainage work by any authority. - This brochure does not form a part of a agreement or any legal document, it is for information purpose only.




KRISHNA
skyvillas

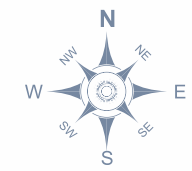
3 B 2 H K , 4 B 2 H K & P E N T H O U S E S

THE **ELITE**
PLACE TO LIVE.

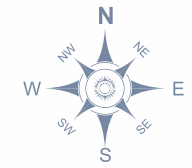


1 2 m t r W i d e R o a d

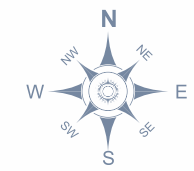
GROUND FLOOR PLAN



TYPICAL FLOOR PLAN 1ST TO 11TH FLOOR



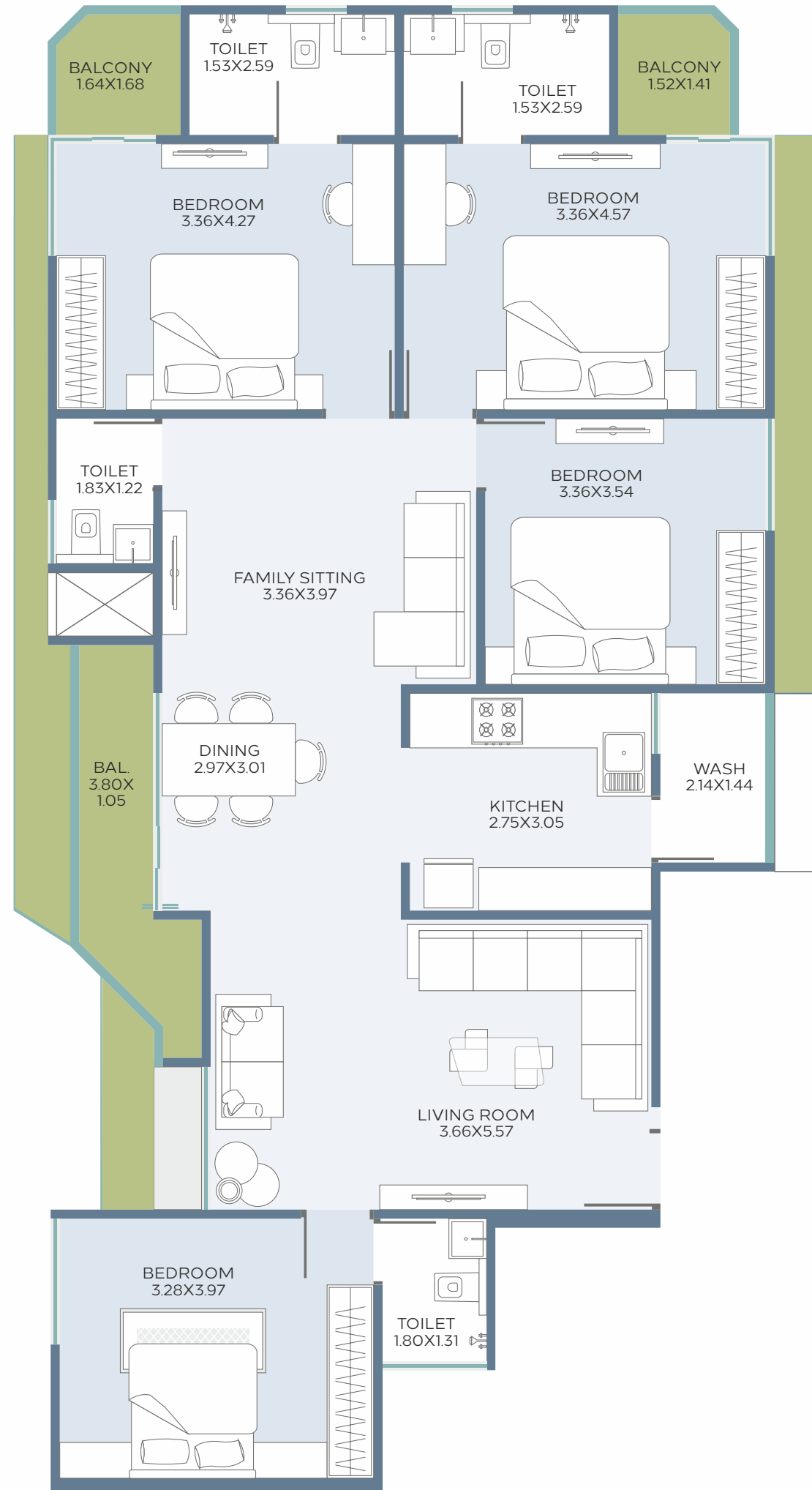
TYPICAL FLOOR PLAN 12TH FLOOR



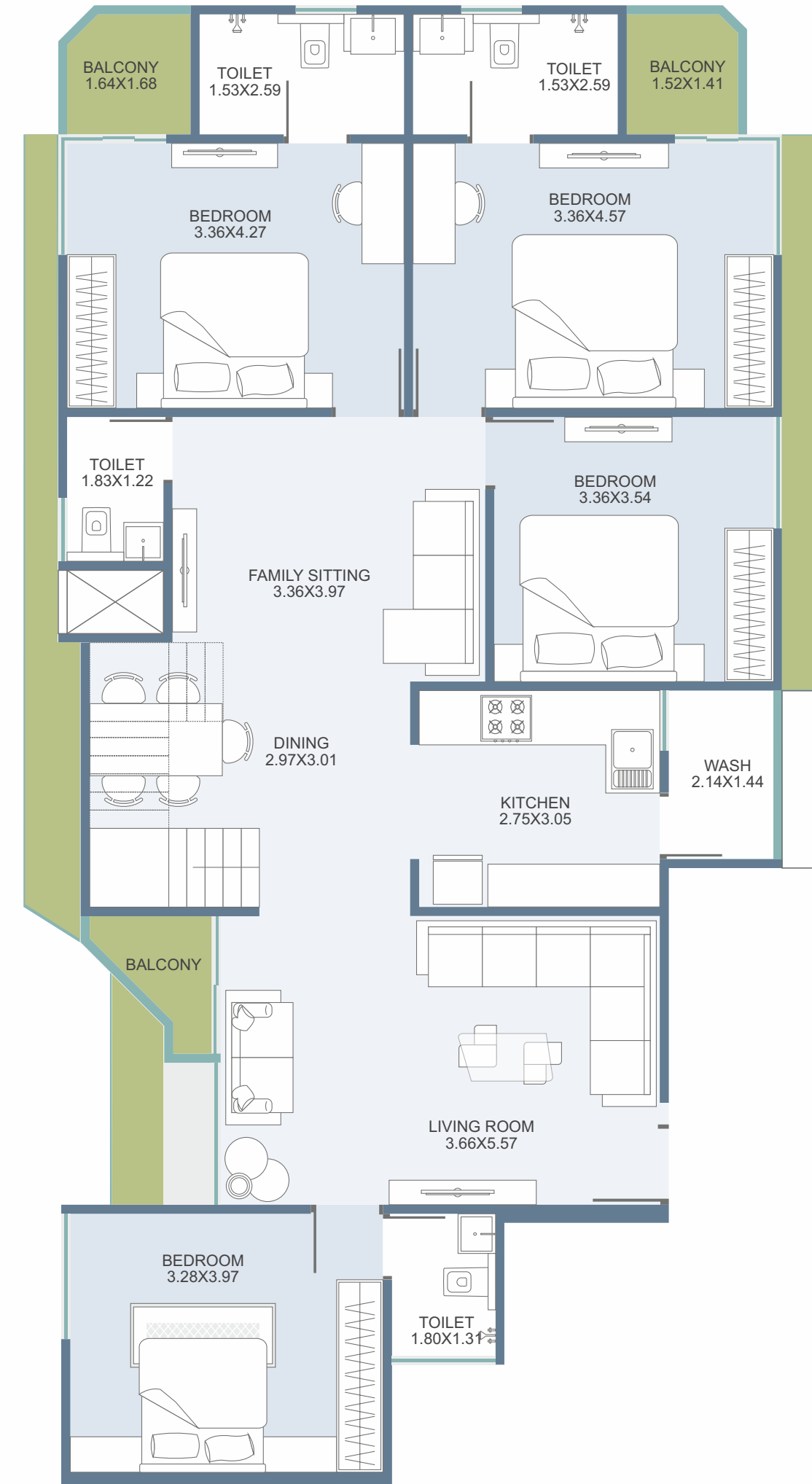
TYPICAL FLOOR PLAN
13TH FLOOR



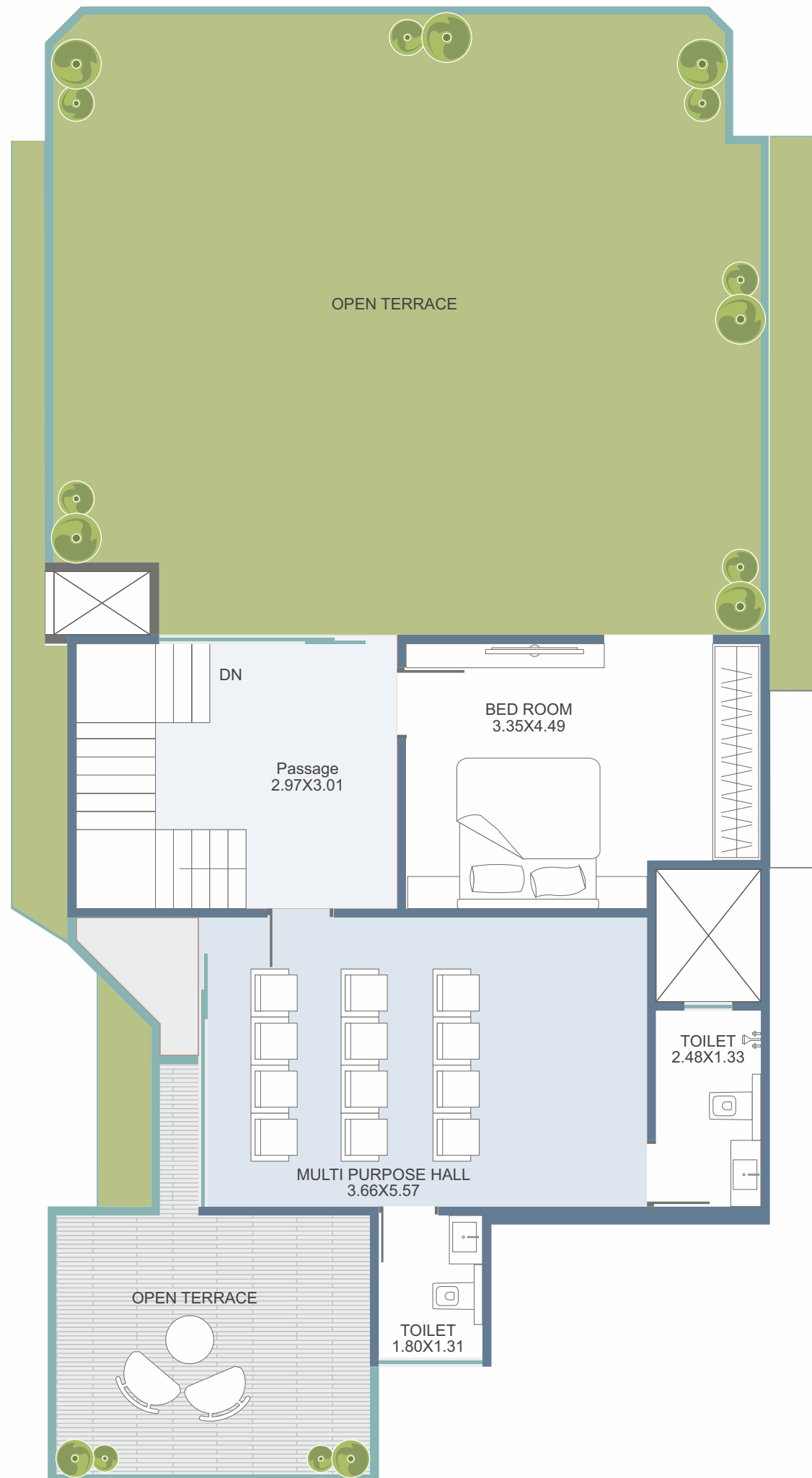
TOWER A 1ST TO 11TH FLOOR



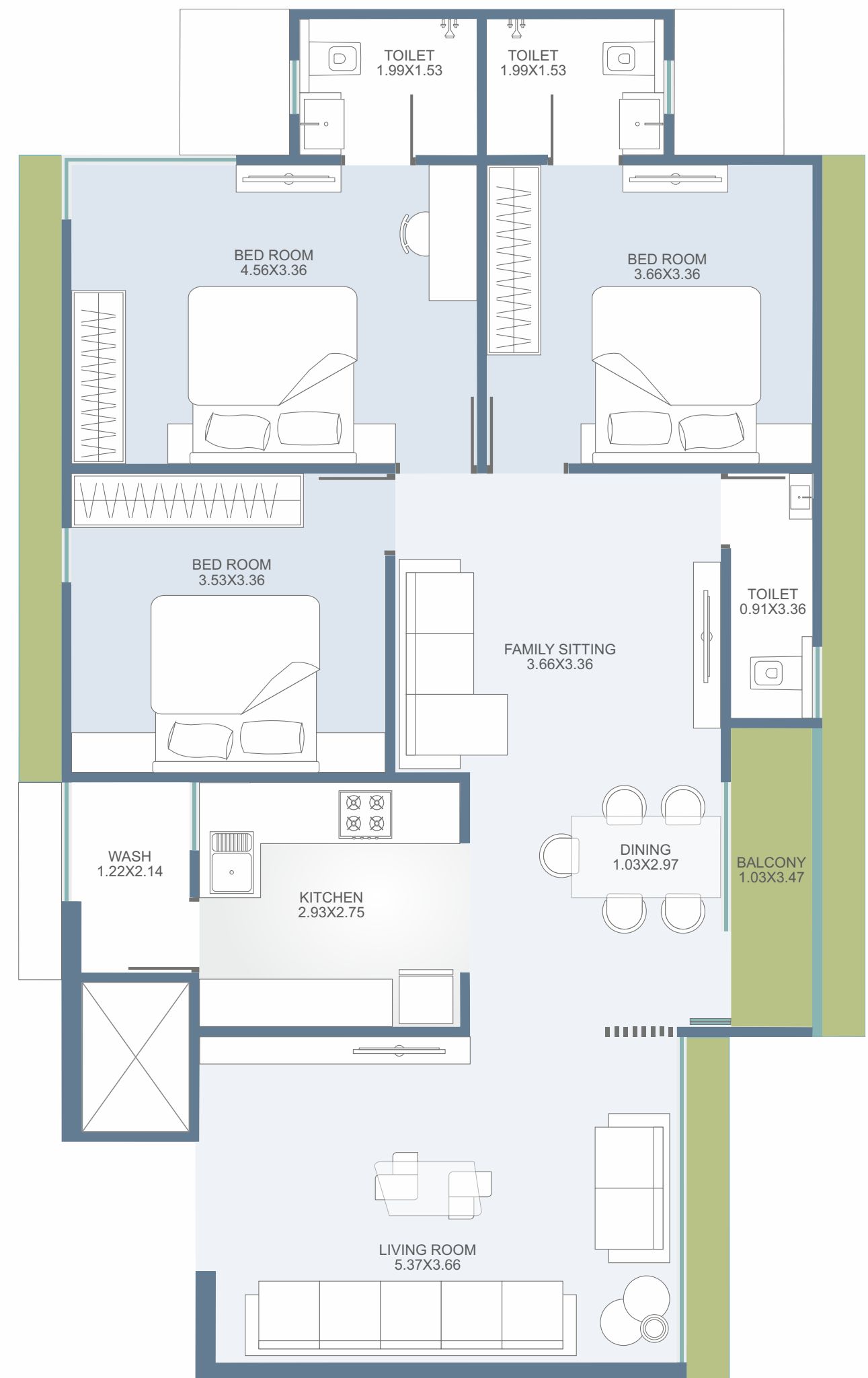
TOWER A 12TH FLOOR LOWER PENTHOUSE



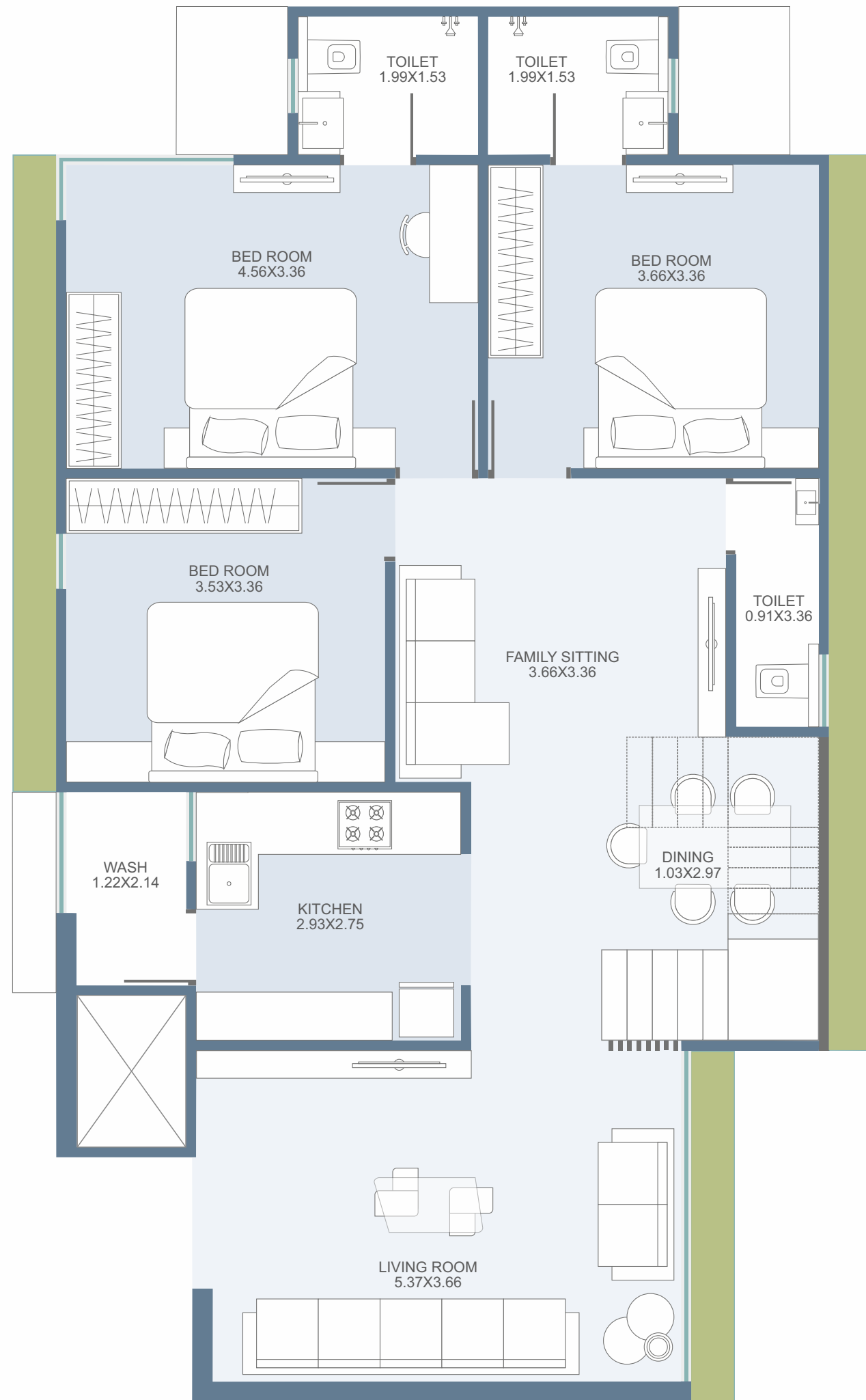
TOWER A
13TH FLOOR
UPPER PENTHOUSE



TOWER B
1 TO 11TH FLOOR



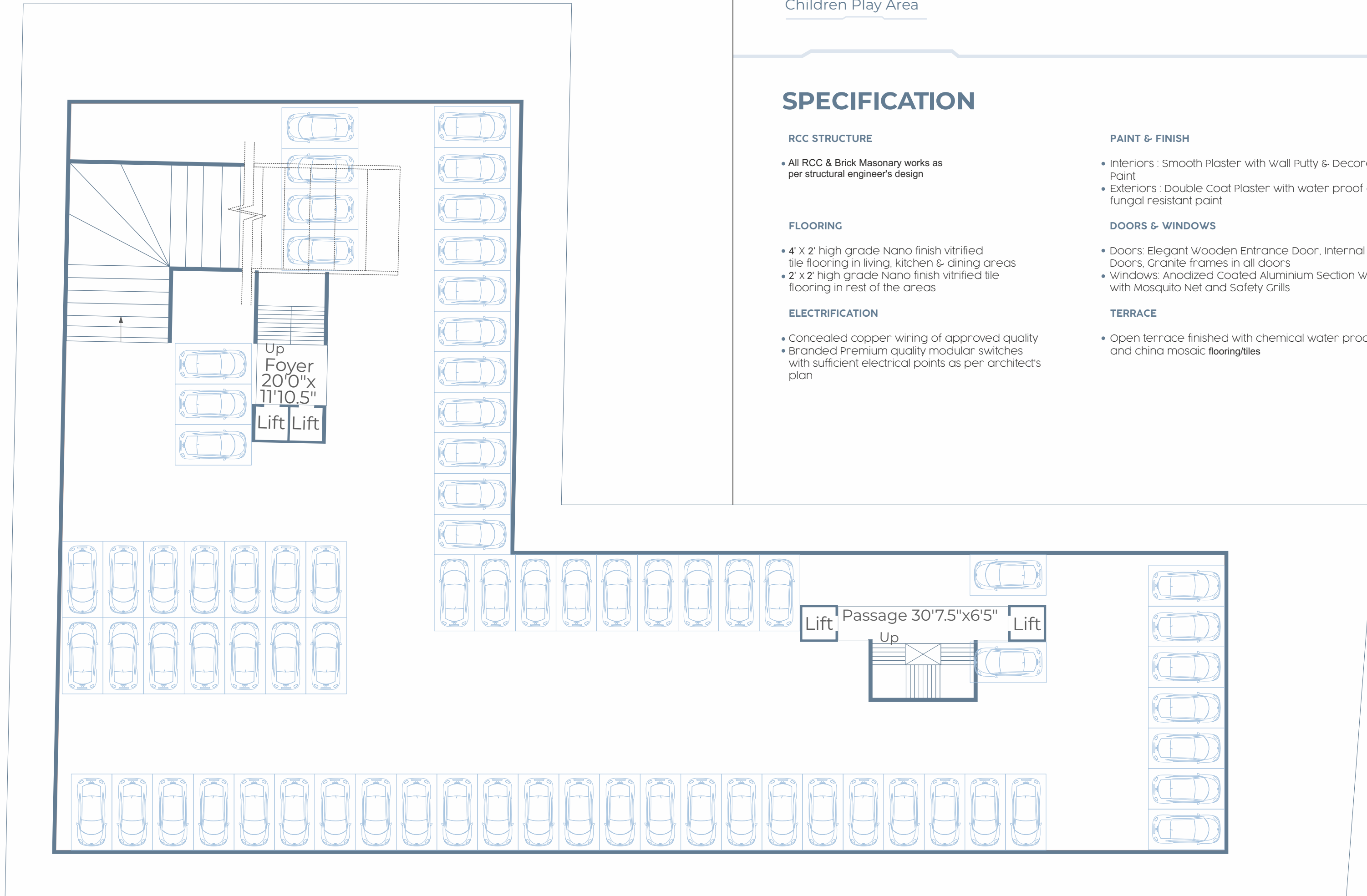
TOWER B
12TH FLOOR
LOWER PENTHOUSE



TOWER B
13TH FLOOR
UPPER PENTHOUSE



BASEMENT FLOOR PLAN



AMENITIES

Landscape Garden

Children Play Area

SPECIFICATION

RCC STRUCTURE

- All RCC & Brick Masonary works as per structural engineer's design

FLOORING

- 4' X 2' high grade Nano finish vitrified tile flooring in living, kitchen & dining areas
- 2' x 2' high grade Nano finish vitrified tile flooring in rest of the areas

ELECTRIFICATION

- Concealed copper wiring of approved quality
- Branded Premium quality modular switches with sufficient electrical points as per architect's plan

PAINT & FINISH

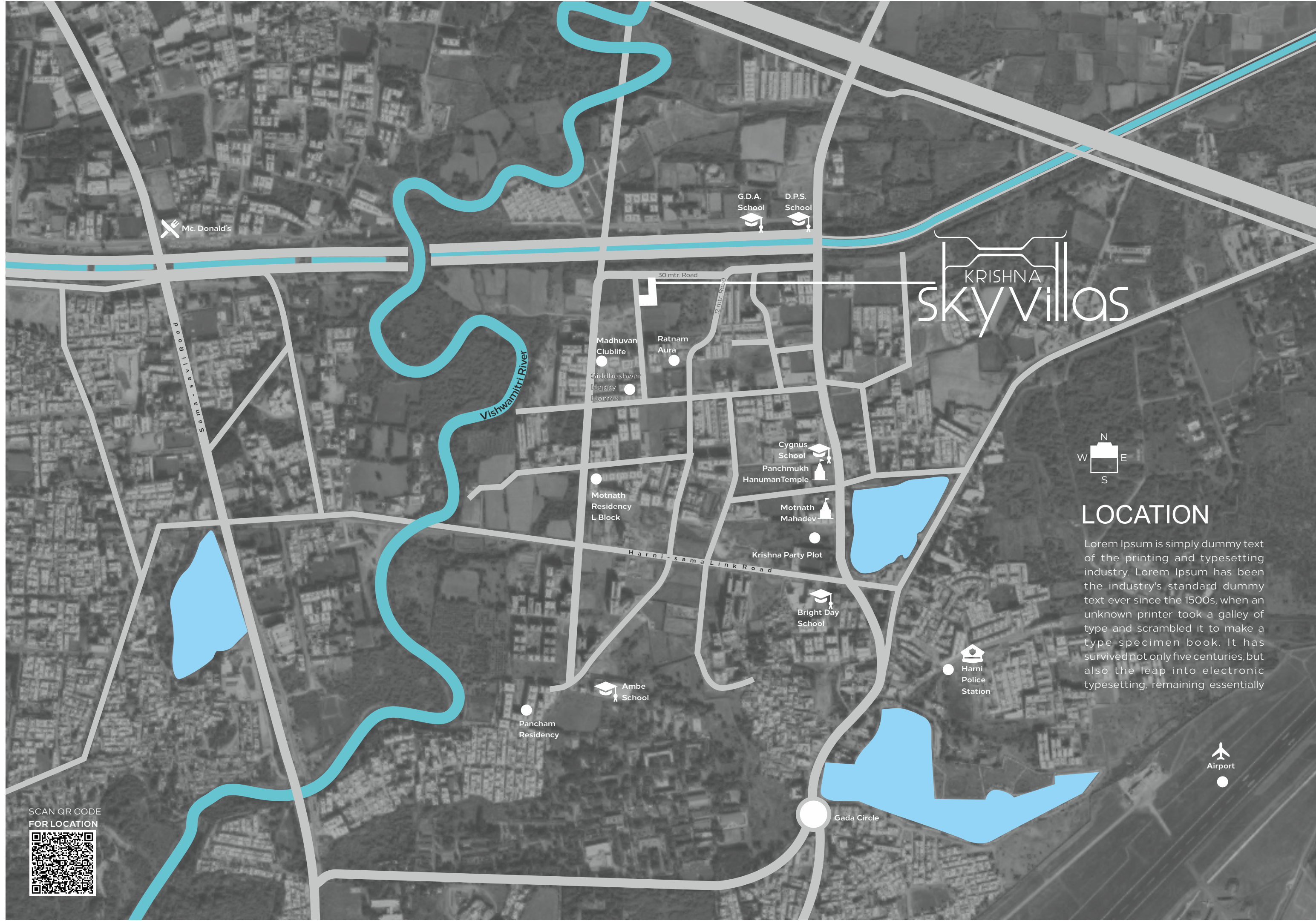
- Interiors : Smooth Plaster with Wall Putty & Decorative Paint
- Exteriors : Double Coat Plaster with water proof and fungal resistant paint

DOORS & WINDOWS

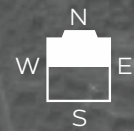
- Doors: Elegant Wooden Entrance Door, Internal Flush Doors, Granite frames in all doors
- Windows: Anodized Coated Aluminium Section Windows with Mosquito Net and Safety Grills

TERRACE

- Open terrace finished with chemical water proofing and china mosaic flooring/tiles

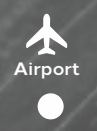


KRISHNA skyvillas



LOCATION

Lorem Ipsum is simply dummy text of the printing and typesetting industry. Lorem Ipsum has been the industry's standard dummy text ever since the 1500s, when an unknown printer took a galley of type and scrambled it to make a type specimen book. It has survived not only five centuries, but also the leap into electronic typesetting, remaining essentially



SCAN QR CODE FOR LOCATION

