



Abhivyakti - 9824089086

Project by
MADHI
DEVELOPERS

Architect
Dilip Sharma & Associates
Consulting Architect
DISHA Architect -Engineers

Structural Consultant
Zarna Associates
Vadodara



Near Suryadarshan Township, Behind Billabong School,
T. P. 31, Manjalpur, Mile Stone: Woods Ville,
Vadsar Road, New Manjalpur, Vadodara
Cell: +91- 98251 70602

DISCLAIMER : - Premium quality materials or equivalent branded products shall be used for all construction work - Right of any changes in dimensions, design & specifications will be reserved with the developer, which shall be binding for all members. - External changes are strictly not allowed. - Development charges, GST charges, documentation charges, stamp duty, all municipal taxes, G.E.B. meter deposit should be levied separate. - Each member needs to pay maintenance deposits separately. - In case of booking cancellation, amount will be refunded from the booking of same premise after deducting 10% of booking amount. - Possession will be given after one month of all settlement of account. - Extra work at the cost of client with prior estimate needs to be given in advance but no change in elevation and plan will be done. - The developer reserve the full right to make any changes. - This brochure does not form a part of agreement or any legal document, It is easy display of project only. - Subject to Vadodara jurisdiction.

living with
the pure bliss
of Nature



Memories

PREMIUM 2 & 3 BHK FLATS

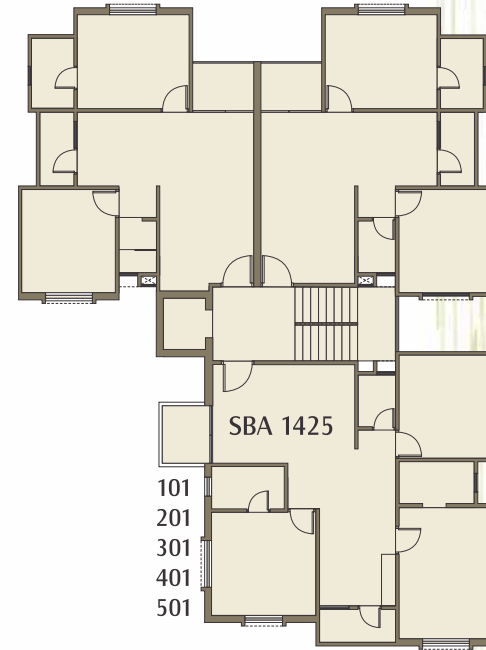


We take immense pleasure to introduce ourselves as **"MEMORIES"** a luxurious residence apartments in a natural environment of lush greenery .

The chirping of birds, a walk in the grass or soothing shade of trees, green surroundings, plush recreational amenities.

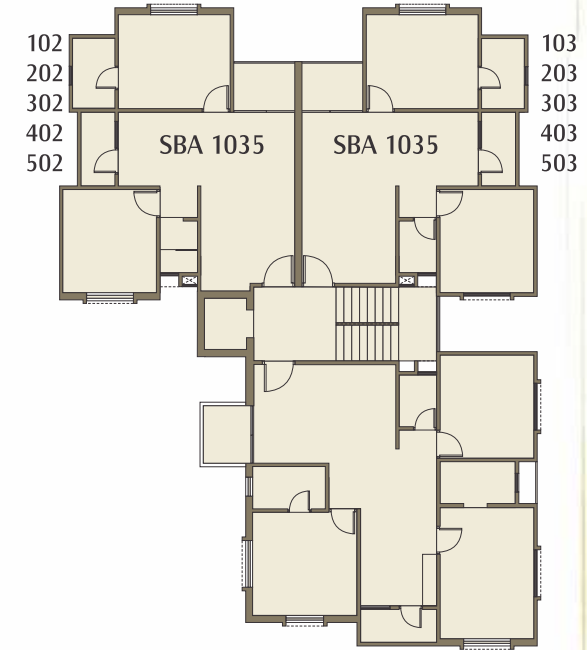
It has everything you need, to ensure a comfortable living. From school to office, to shopping arcades to leisure outlets. All well-connected with a network of road. It is located in the New Manjalpur, Vadodara.

"When everything comes together with such perfection, all you need is to appreciate, & enjoy"



TYPICAL FLOOR PLAN
3 BHK
WING - A

TYPICAL FLOOR PLAN
2 BHK
WING - A

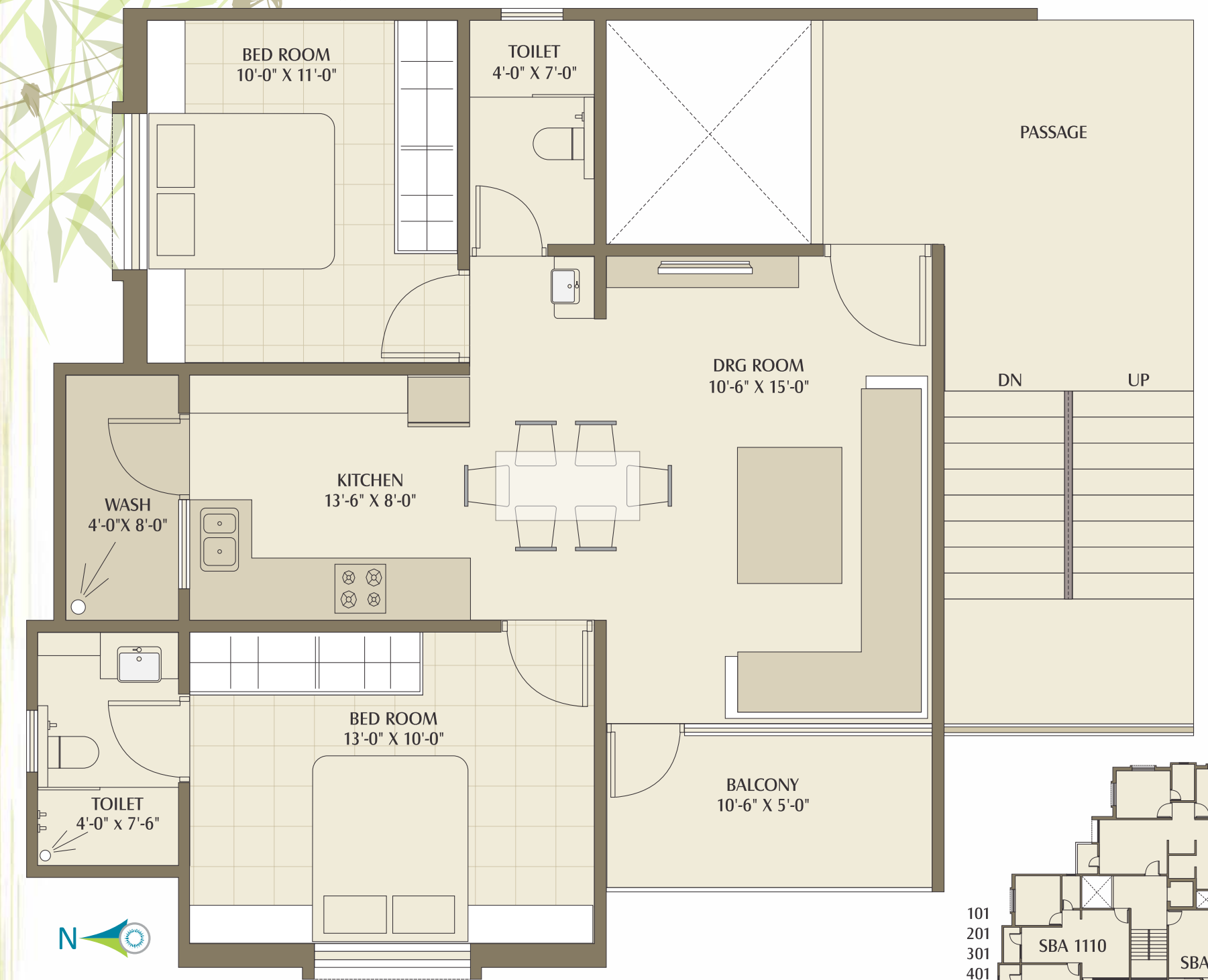
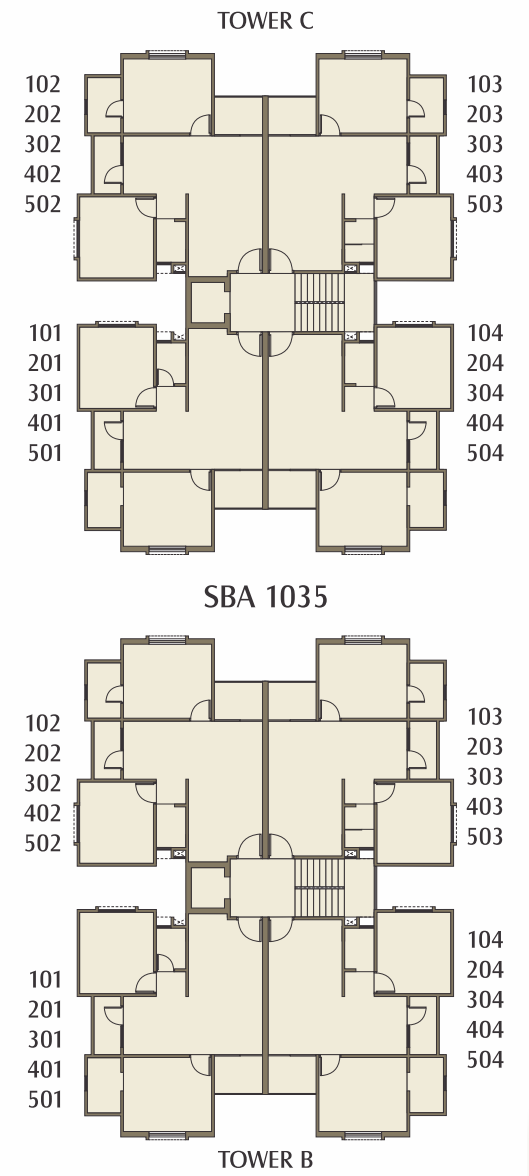


LAYOUT PLAN

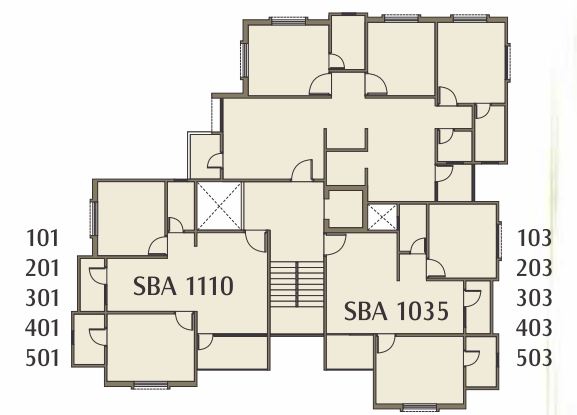




TYPICAL FLOOR PLAN
2 BHK
WING - B & C

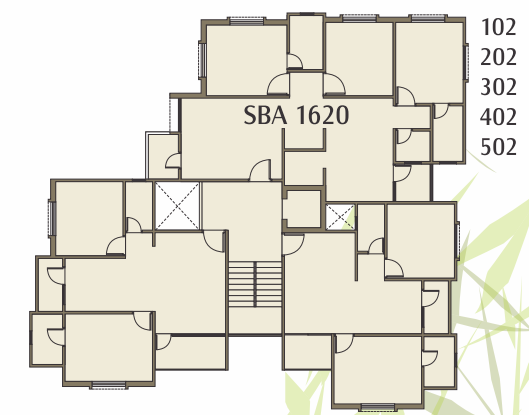


TYPICAL FLOOR PLAN
2 BHK
WING - D





TYPICAL FLOOR PLAN
3 BHK
WING - D



AMENITIES



- CLUB HOUSE - GYMNASIUM - CHILDREN PLAY AREA
- LUSH GREEN GARDEN

SPECIFICATIONS

- Structure :**
Earthquake resistant R.C.C. frame structure building with block wall.
- Wall Finish :**
Internal smooth plaster finished with distemper & external double coat plaster with weather proof quality paint.
- Kitchen :**
Black granite platform with SS Sink, Colour Glazed Tiles dado upto the lintel level.
- Flooring & Tiling :**
24"x24" vitrified tiles in all rooms and anti skid tiles in balcony. Fully Glazed designer Tiles on bathroom walls upto the lintel level. Glazed Tiles on Kitchen dado upto the lintel level.
- Doors & Windows :**
Attractive entrance doors with standard safety lock & other decorative Fittings. Internal doors are flush door. Aluminum window.
- Electrical :**
Concealed copper wiring as per ISI requirements. Modular sockets & switches. TV & Telephone points in living room and master bed room only. Luminaries in lounge / entrance lobby, lift lobbies & common areas. Split A.C. point in single bedroom.
- Plumbing & Sanitary :**
Contemporary sanitary ware & standard C.P. Fittings.
- Water Facility :**
Underground & overhead water tank to be provided.
- Parking :**
Well planned adequate car parking.
- Lift :**
Lifts of approved quality.
- IN THE NEIGHBORHOODS :**
 - Schools :** Billbong, Delhi Public, Gujarat Public, Shreyas, Tree House, Bhavans
 - Hospital :** Many in 1.5 to 2.5 KM area
 - Market Places :** D Mart 1.5 KM
 - Main Road :** Manjalpur Stadium - 1.1 KM, GIDC - 1.3 KM, ONGC - 2.7 KM, Vishwamitri Railway Station - 1.5 KM, Atladra Swaminarayan Temple - 3 KM, Akshar Chowk - 2.5 KM away from our location.
- PAYMENT TERMS: FLATS**
 - 10% Booking - 15% Plinth Level
 - 40% 1st To 6th Floor Slab (5% for each slab)
 - 15% Brick masonry - 5% Internal Plaster
 - 5% External Plaster - 5% Flooring - 5% Possession