

Developers :-
SHREENATH DEVELOPERS

Architect :-
Ambica Consultancy

Structure :-
**Ashok Shah Associates
(Chirag Shah)**

Contact :-
**9825341259
9924438797**

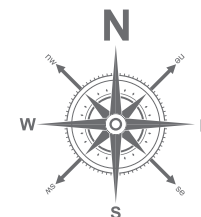
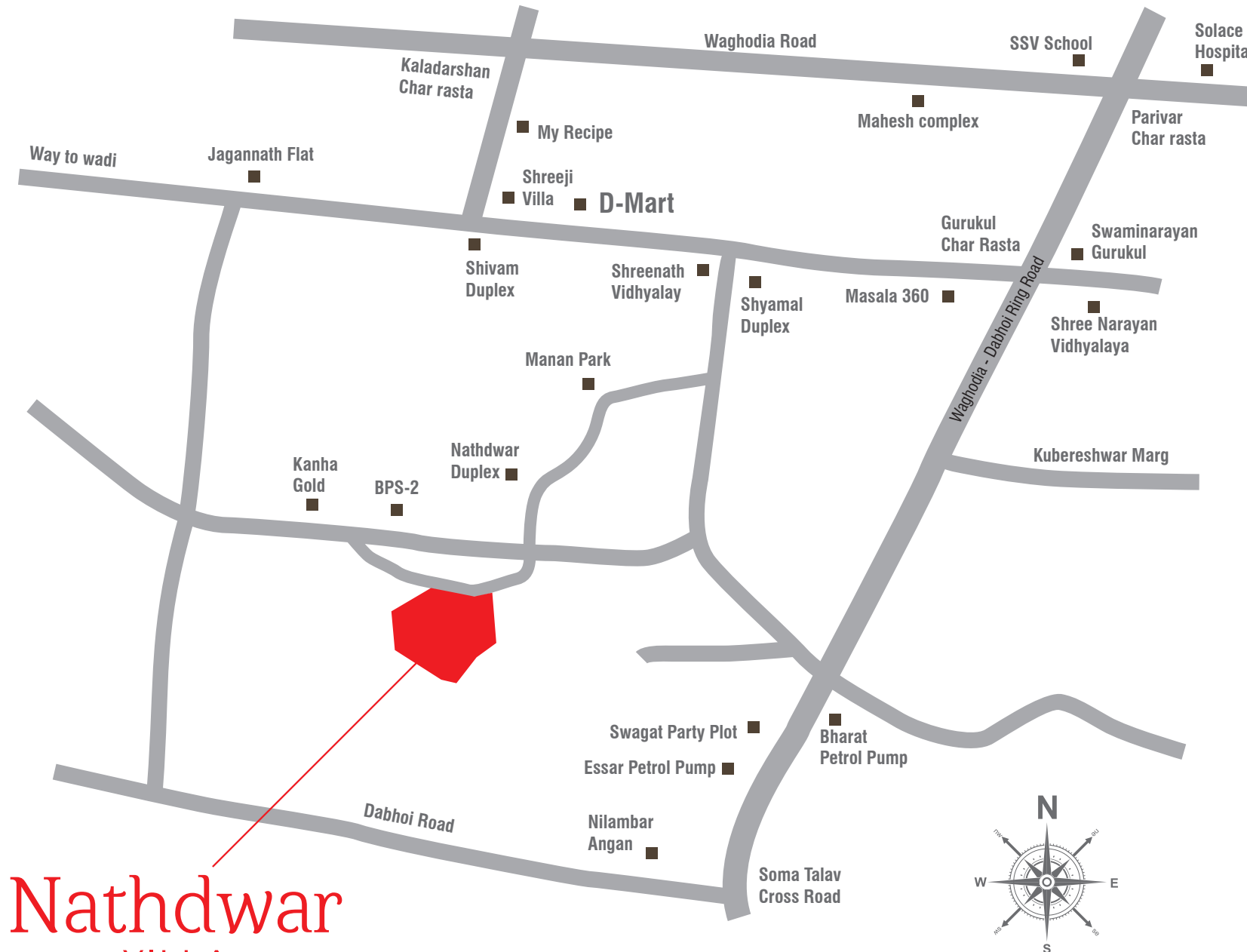
Site Address :-
Opp. BPS-2 & Kanha Gold,
Nr. D-mart, Waghodia Road,
Vadodara - 390019.

www.nathdwarvillaluxuriousflats.com



Nathdwar
VILLA

Nathdwar
VILLA



॥ श्री गणेशाय नमः ॥

*because
prestige
is our
motto*



Nathdwar
VILLA



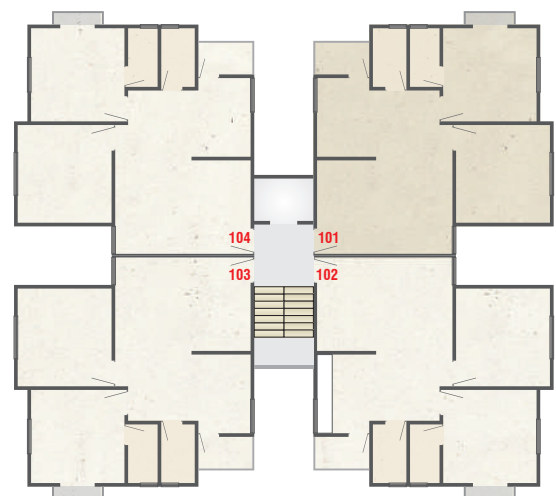
2 BHK LUXURIOUS FLATS

PAYMENT MODE

FOR FLATS :- 25% at the time of booking | 10% Plinth slab | 10% 1st slab | 10% 2nd slab | 10% 3rd slab | 10% 4th slab | 10% 5th slab | 10% Plaster | 05% Final finishing




Tower A
2 BHK
 (Typical Floor Plan)



Specifications



STRUCTURE

Earthquake proof RCC frame structure as per structural engineer's design



WALLS

Interior : Wall putty with Primer
Exterior : Texture plaster with exterior paint



DOORS

Attractive main door & other doors 2 side laminated with standard safety lock & other necessary fittings



WINDOWS

Powder coated Aluminum sliding windows with glass & M.S. Safety Grill



FLOORING & TILING

600 x 600 Vitrified Tiles Flooring with Living room, kitchen area, & All Bedrooms

Wall tiles in bathroom & Kitchen upto Lintel level
Kitchen with Granite platform & stainless steel sink.



PLUMBING & SANITARY

Concealed Internal Plumbing with Standard Quality CP fittings, Central geyser points for all bathrooms
Washing Machine point in wash area.

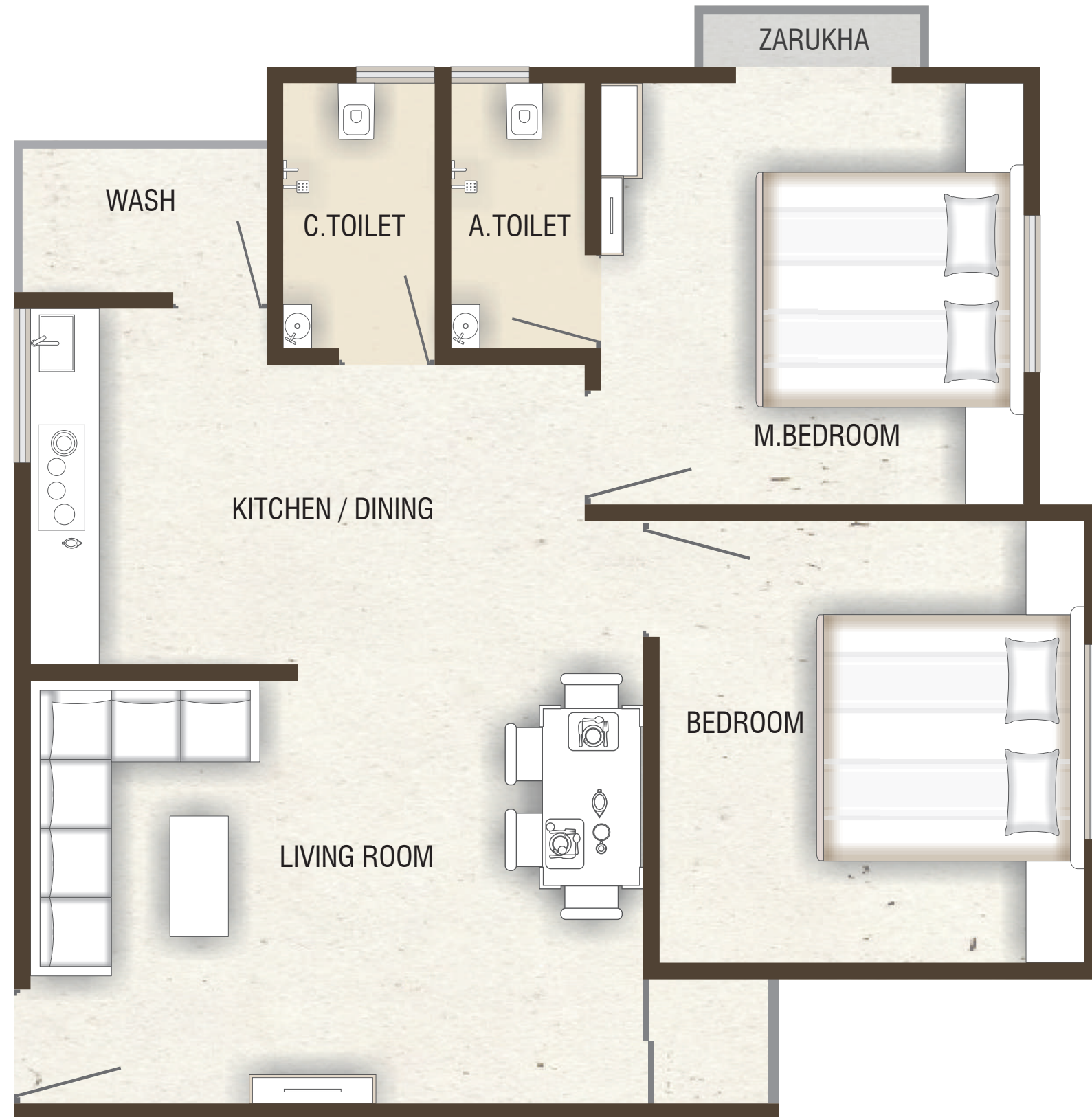
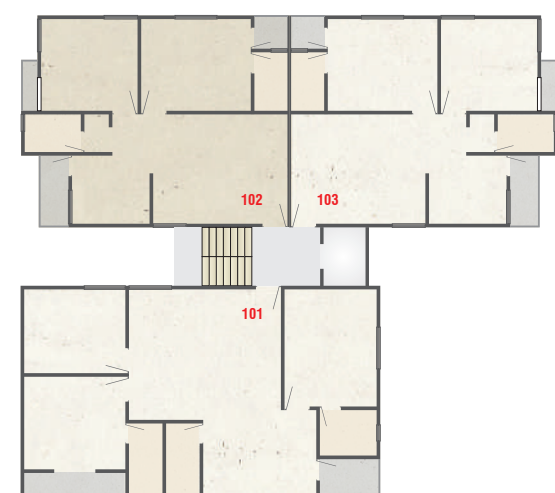


ELECTRICAL

Concealed copper wiring of ISI quality with modular switches
TV point in Living Room & Master Bedroom
AC point in Master Bedroom
Refrigerator, R.O. & Chimney Points in Kitchen
Washing Machine Point in Wash Area.
Geyser points for all bathrooms



Tower B
2 BHK
 (Typical Floor Plan)



Specifications



STRUCTURE
 Earthquake proof RCC frame structure as per structural engineer's design



WALLS
 Interior : Wall putty with Primer
 Exterior : Texture plaster with exterior paint



DOORS
 Attractive main door & other doors 2 side laminated with standard safety lock & other necessary fittings



WINDOWS
 Powder coated Aluminum sliding windows with glass & M.S. Safety Grill



FLOORING & TILING
 600 x 600 Vitrified Tiles Flooring with Living room, kitchen area, & All Bedrooms
 Wall tiles in bathroom & Kitchen upto Lintel level
 Kitchen with Granite platform & stainless steel sink.



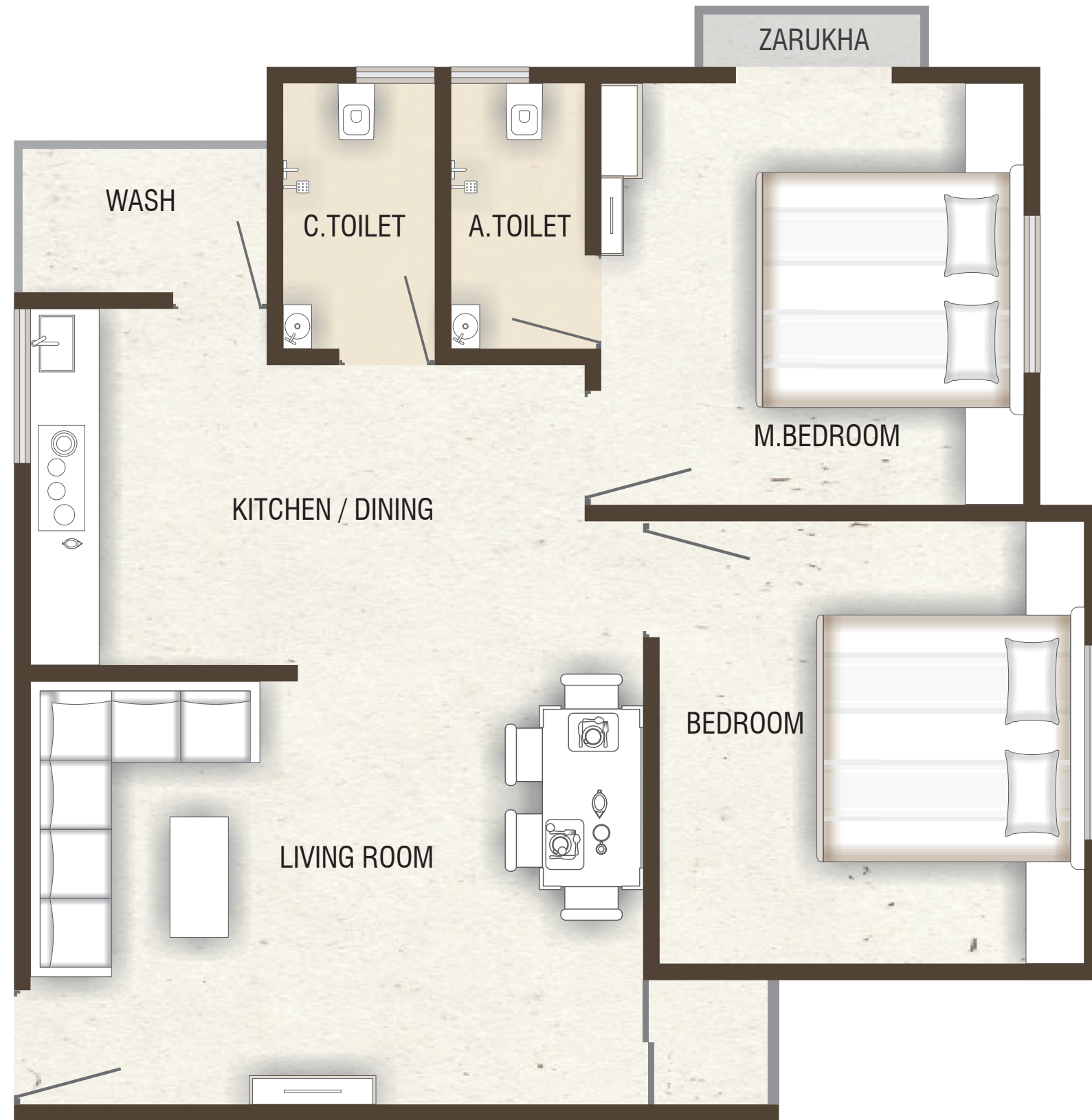
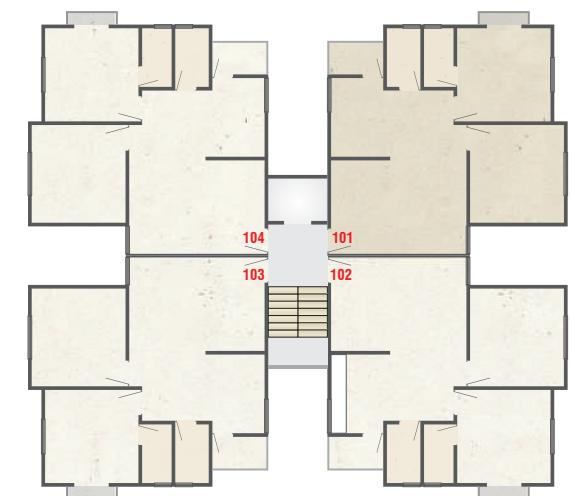
PLUMBING & SANITARY
 Concealed Internal Plumbing with Standard Quality CP fittings, Central geyser points for all bathrooms
 Washing Machine point in wash area.



ELECTRICAL
 Concealed copper wiring of ISI quality with modular switches
 TV point in Living Room & Master Bedroom
 AC point in Master Bedroom
 Refrigerator, R.O. & Chimney Points in Kitchen
 Washing Machine Point in Wash Area.
 Geyser points for all bathrooms



Tower C
2 BHK
 (Typical Floor Plan)



Specifications



STRUCTURE
 Earthquake proof RCC frame structure as per structural engineer's design



WALLS
 Interior : Wall putty with Primer
 Exterior : Texture plaster with exterior paint



DOORS
 Attractive main door & other doors 2 side laminated with standard safety lock & other necessary fittings



WINDOWS
 Powder coated Aluminum sliding windows with glass & M.S. Safety Grill



FLOORING & TILING
 600 x 600 Vitrified Tiles Flooring with Living room, kitchen area, & All Bedrooms
 Wall tiles in bathroom & Kitchen upto Lintel level
 Kitchen with Granite platform & stainless steel sink.



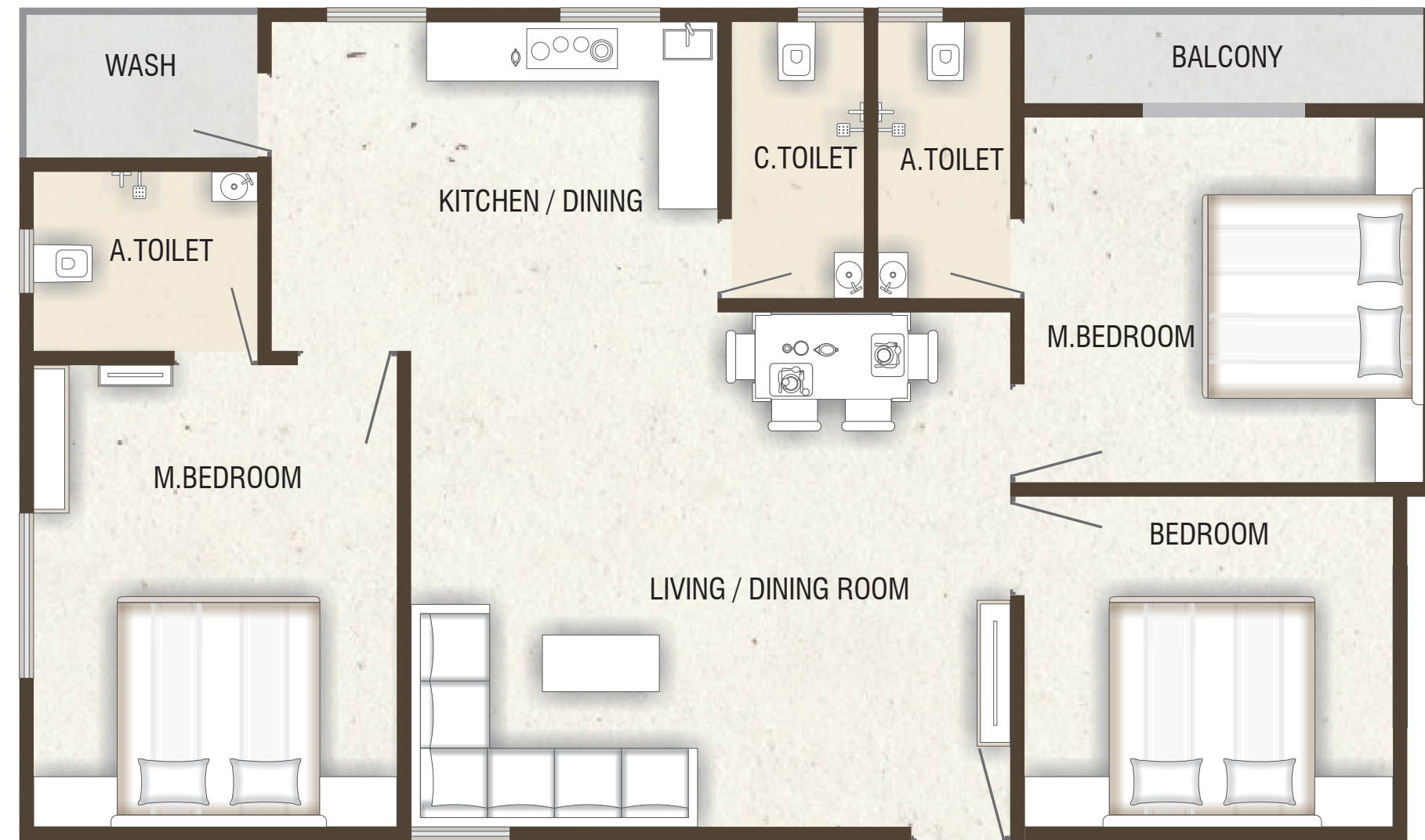
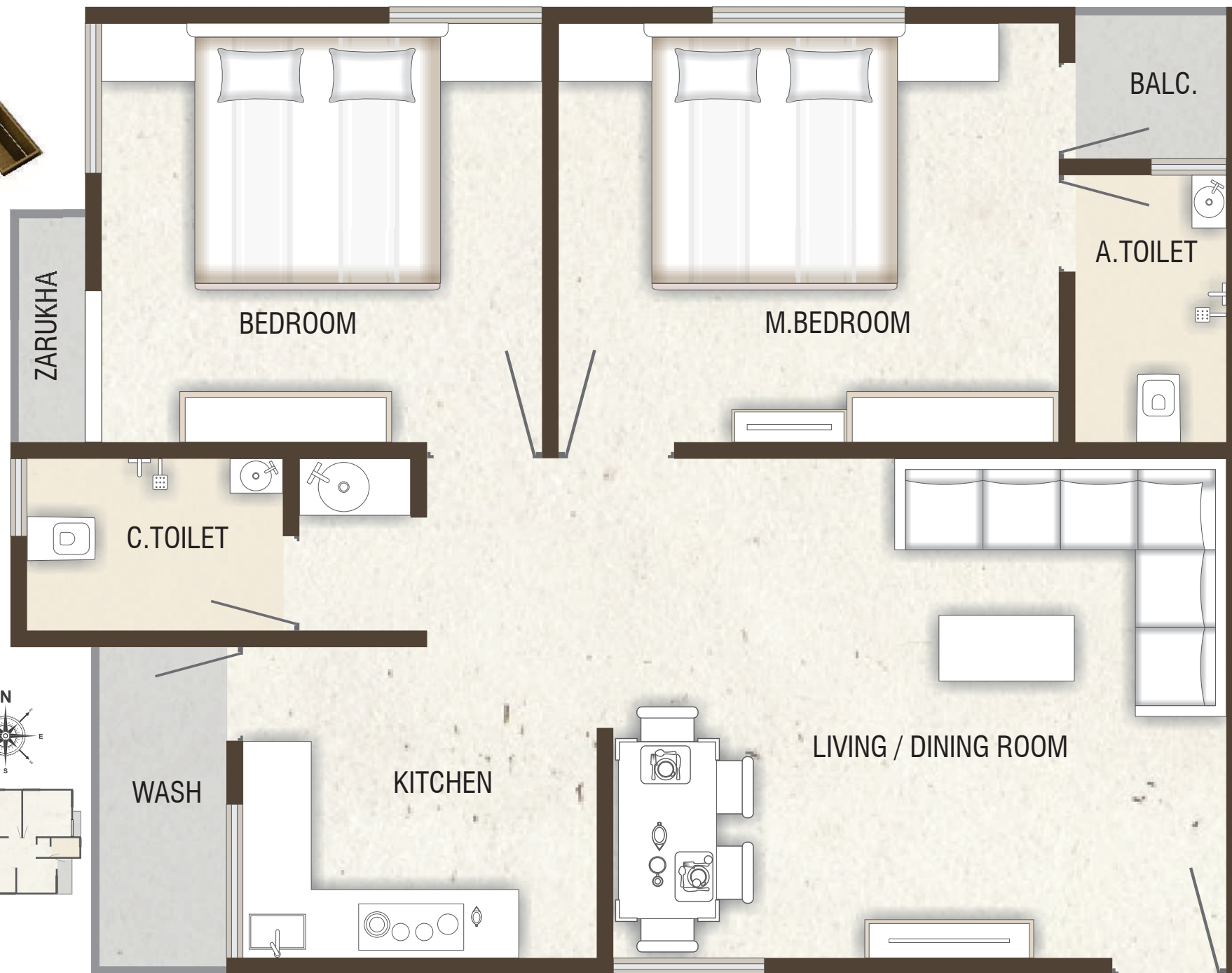
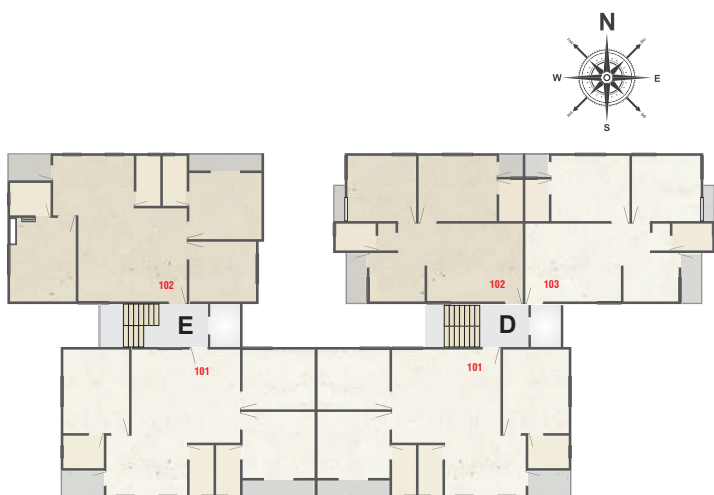
PLUMBING & SANITARY
 Concealed Internal Plumbing with Standard Quality CP fittings, Central geyser points for all bathrooms
 Washing Machine point in wash area.



ELECTRICAL
 Concealed copper wiring of ISI quality with modular switches
 TV point in Living Room & Master Bedroom
 AC point in Master Bedroom
 Refrigerator, R.O. & Chimney Points in Kitchen
 Washing Machine Point in Wash Area.
 Geyser points for all bathrooms



Tower D & E
2 BHK
(Typical Floor Plan)



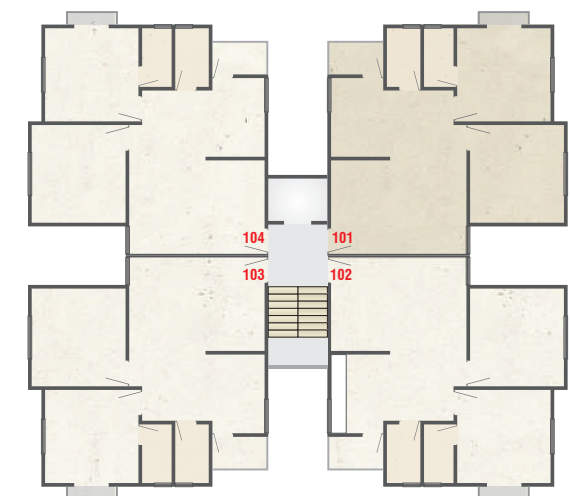
Tower D & E
3 BHK
(Typical Floor Plan)

Specifications

- STRUCTURE**
Earthquake proof RCC frame structure as per structural engineer's design
- WALLS**
Interior : Wall putty with Primer
Exterior : Texture plaster with exterior paint
- DOORS**
Attractive main door & other doors 2 side laminated with standard safety lock & other necessary fittings
- WINDOWS**
Powder coated Aluminum sliding windows with glass & M.S. Safety Grill
- FLOORING & TILING**
600 x 600 Vitrified Tiles Flooring with Living room, kitchen area, & All Bedrooms
Wall tiles in bathroom & Kitchen upto Lintel level
Kitchen with Granite platform & stainless steel sink.
- PLUMBING & SANITARY**
Concealed Internal Plumbing with Standard Quality CP fittings
Central geyser points for all bathrooms
Washing Machine point in wash area.
- ELECTRICAL**
Concealed copper wiring of ISI quality with modular switches
TV point in Living Room & Master Bedroom
AC point in Master Bedroom
Refrigerator, R.O. & Chimney Points in Kitchen
Washing Machine Point in Wash Area.
Geyser points for all bathrooms



Tower F
2 BHK
 (Typical Floor Plan)



Specifications



STRUCTURE
 Earthquake proof RCC frame structure as per structural engineer's design



WALLS
 Interior : Wall putty with Primer
 Exterior : Texture plaster with exterior paint



DOORS
 Attractive main door & other doors 2 side laminated with standard safety lock & other necessary fittings



WINDOWS
 Powder coated Aluminum sliding windows with glass & M.S. Safety Grill



FLOORING & TILING
 600 x 600 Vitrified Tiles Flooring with Living room, kitchen area, & All Bedrooms
 Wall tiles in bathroom & Kitchen upto Lintel level
 Kitchen with Granite platform & stainless steel sink.



PLUMBING & SANITARY
 Concealed Internal Plumbing with Standard Quality CP fittings, Central geyser points for all bathrooms
 Washing Machine point in wash area.



ELECTRICAL
 Concealed copper wiring of ISI quality with modular switches
 TV point in Living Room & Master Bedroom
 AC point in Master Bedroom
 Refrigerator, R.O. & Chimney Points in Kitchen
 Washing Machine Point in Wash Area.
 Geyser points for all bathrooms