



A PROJECT BY  
**RUDRAKSH GROUP**



# रुद्राक्ष

HERITAGE

2 & 3 BHK PRIMIUUM RESIDENCE FLATS



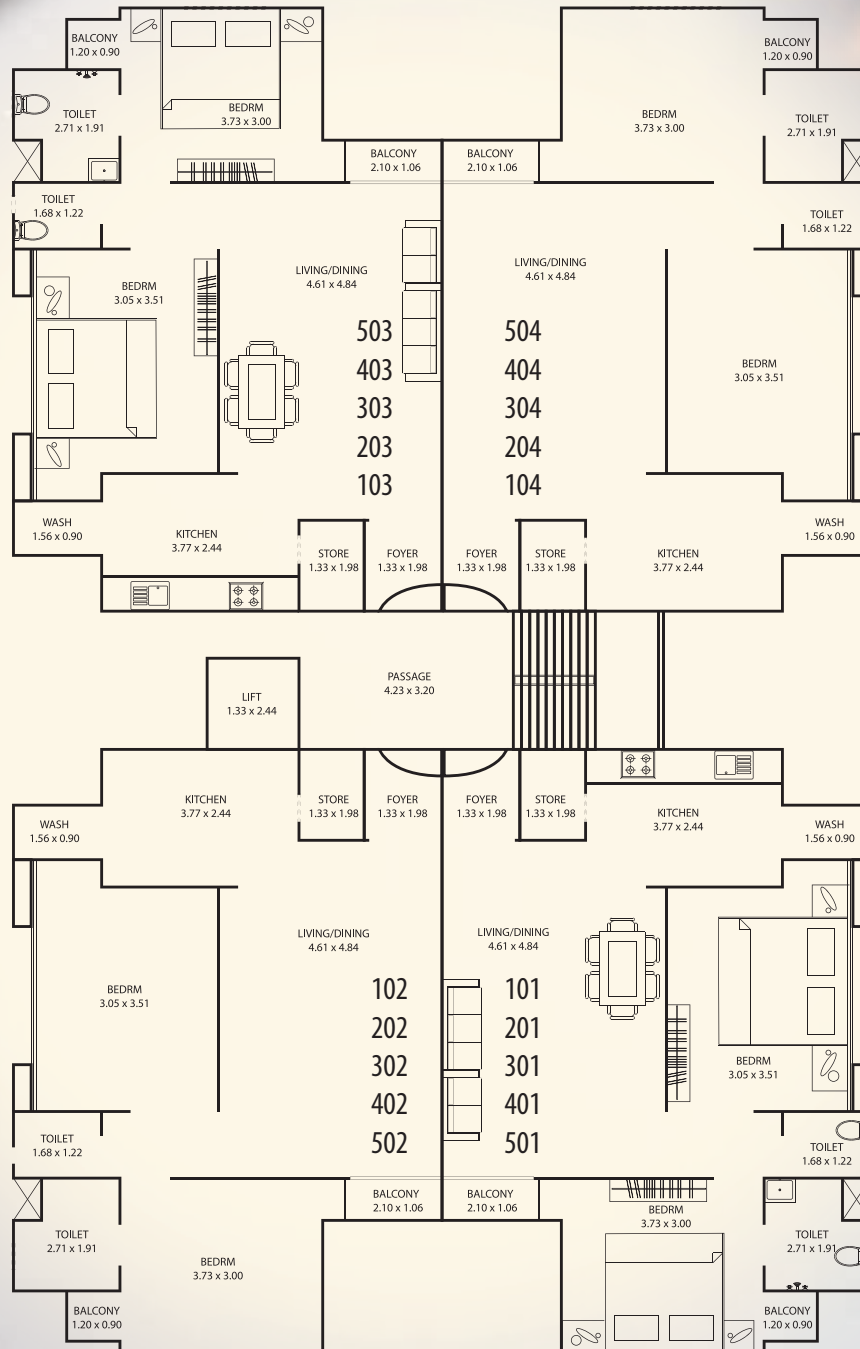


# AMENITIES

- Gate with security cabin
- Landscaped Garden
- Alloted car parking each flat
  
- CCTV camera for common area
- Name plate and letterbox in parking area
- Standard quality lift
- Overhead watertank for 24 hour water
  
- POP ceiling in living room and all bedrooms
- R.O system for each flat
- Electric Geyser in all bathrooms
- water proofing treatment and china mosaic on terrace

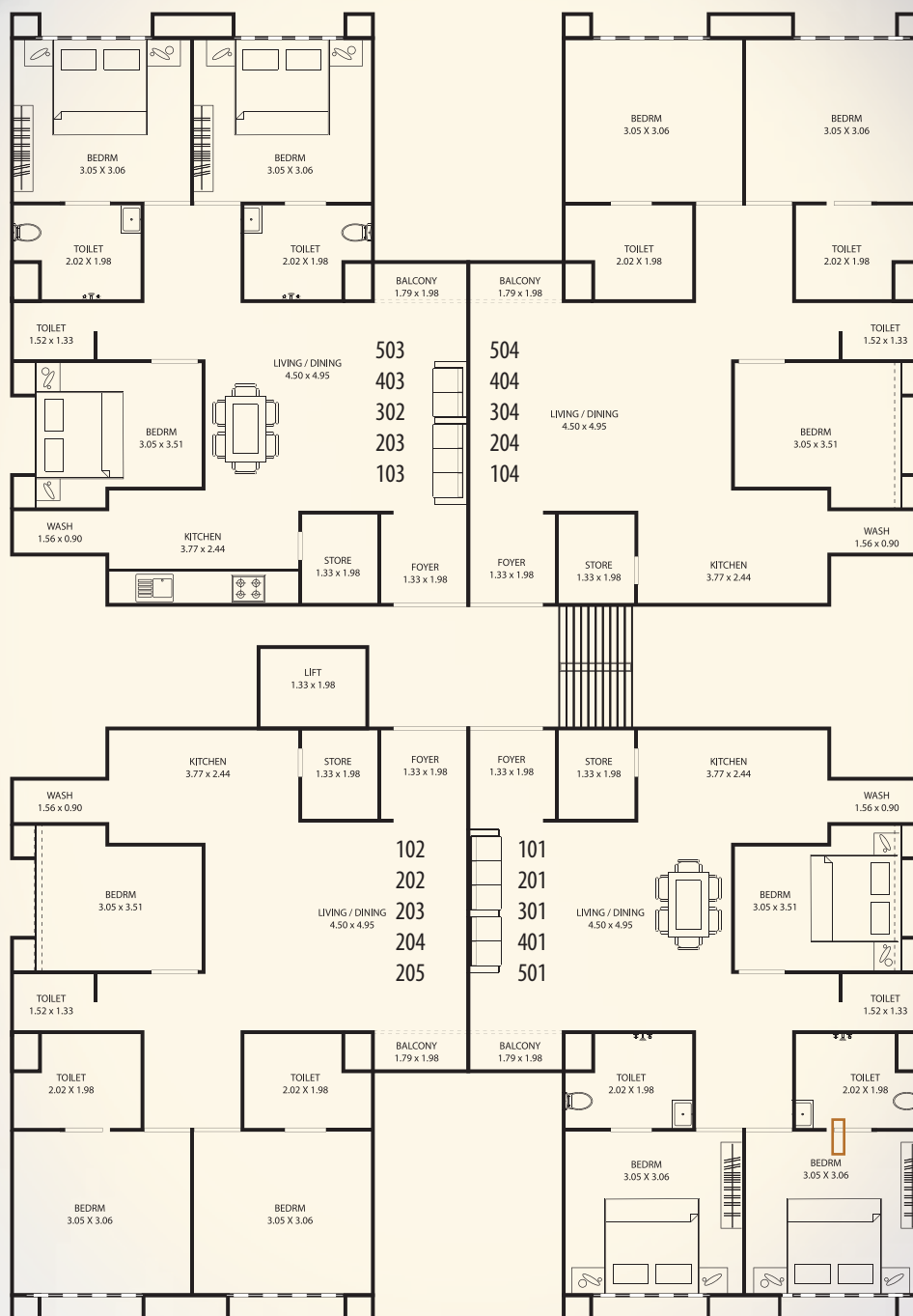
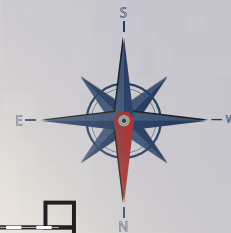
# TOWER - D

## 2 BHK



# TOWER - E

## 3 BHK



# SPECIFICATION

---

## Structure

Earthquake Resistance **RCC** Frame Structure  
As Per Structure Design

## Flooring

Superior Quality Vitrified Flooring In All Rooms

## Kitchen

Granite Top Platform With S.S. Sink  
Decorative Glazed Tiles Dedo

## Door - Windows

- Attractive Main Door
- Good Quality Flush Door In All Bedrooms  
And Both Side Laminates.
- Alluminium Powder Coating Window With  
Safety Grill
- Internal Smooth Plaster With Birla Putty  
Distemper Paints And External Walls With  
Acrylic Paint.

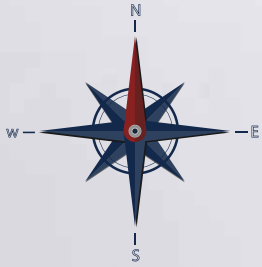
## ELECTRIFICATION

- Concealed wiring of standard quality (ISI)  
with modular switches
- T.V point in living room
- A.C point in all bedrooms
- General Lighting in Common areas

## TOILET - PLUMBING

- Standard quality sanitary ware & branded  
quality plumbing fittings
- Decorative glazed tiles dedo with modern  
concept
- Ceramic tiles in flooring

# KEY PLAN





# अक्षा

## HERITAGE

### **DEVELOPER**

Prapti Devleoper

### **Architect**

Hitesh Shah

### **Site**

Rudraksh Heritage, B/h Saptpadi Party Plot,  
Near Avadh Flat, Chaani

### **Structure Engineer**

Zarna Associates

### **Contact**

9898057979, 7383106007

Disclaimer : The Details, Facts, Specifications, Figures Mentioned in brochure are indicaive for information purpose only and subject notifications / compliance as per RERA act.

Payment Terms :- 10% Booking Amount - 30% 1st slab 45% 2nd slab - 70% 3rd slab - 75% 4th slab - 80% 5th slab - 85% Lift Final 95% Electric Fitting 5% After Coming Cirtificate

please note : premium quality materials or equivalent branded products shall be used for all construction work. - right of any changes in dimenssions, design & specifications will be reserved with the developer which shall be binding for alll members. - external changes are strictly not allowed. - development charges, documentation charges, stamps duty, all municipal taxes, gst tax , g.e.b. meter deposits separetely. - in case of booking cancellation, amount will be refunded from the booking of same premise after deducting 10% of booking amount. - possession will begiven after one month of all setalment of account. - extra work at the cost of client with prior estimate needs to be given in advance but no change in elevation and plan will be done. - the developer reserve the full right to make any changes. - this brochure does not form a part of agreement or any legal document, it is easy display of project only.



# LAYOUT PLAN



# SPECIFICATION

## Structure

Earthquake Resistance **RCC** Frame Structure  
As Per Structure Design

## Flooring

Superior Quality Vitrified Flooring In All Rooms

## Kitchen

Granite Top Platform With S.S. Sink  
Decorative Glazed Titles Dedo

## Door - Windows

- Attractive Main Door
- Good Quality Flush Door In All Bedrooms  
And Both Side Laminates.
- Alluminium Powder Coating Window With  
Safety Grill
- Internal Smooth Plaster With Birla Putty  
Distemper Paints And External Walls With  
Acrylic Paint.

## ELECTRIFICATION

- Concealed wiring of standard quality (ISI)  
with modular switches
- T.V point in living room
- A.C point in all bedrooms
- General Lighting in Common areas

## TOILET - PLUMBING

- Standard quality sanitary ware & branded  
quality plumbing fittings
- Decorative glazed tiles dedo with modern  
concept
- Ceramic tiles in flooring