



KEY PLAN

Developers:  
**Maruti Developers**

Site:  
**"SANSKRUTI",**  
Tulsidham Circle, Manjalpur,  
Vadodara-390011.

Call: **+91 87992 63629**  
Email: [marutidevelopers999@gmail.com](mailto:marutidevelopers999@gmail.com)

Architect:  
**ASQUARE**  
AR. KETAN PATEL

Structure:  
**ZARNA**  
ASSOCIATES

**Mode of Payment :**

- Booking Amount 10% • Excavation 15% • Plinth Level 15% • Ground 9% • 1st Floor Slab 9% • 2nd Floor Slab 9%
- 3rd Floor Slab 9% • 4th Floor Slab 9% • 5th Floor Slab 9% • Flooring 3% • Finishing 3%

DISCLAIMER : All furniture/objects shown in the plan are for presentation & understanding purpose only, By no means, it will form a part of final deliverable products. • Right of any changes in dimensions, design & specifications will be reserved with the developer, which shall be binding for all members. • External changes are strictly not allowed. • Documentation & Development charges, Stamp Duty, GST, MGVL meter deposit should be levied separate. • Each member needs to pay maintenance deposits separately. • In case of booking cancellation, amount will be Refunded from the booking of same premises and minimum of rupees 50000/- will be deducted from the booking amount • In case of delay of water supply, Light connection, Drainage work by VMSS/MGVCL Developers will be not responsible • Possession will be given after one month of all settlement of account. • Extra work will be executed after receipt of full advance payment • The developer reserve the full right to make any changes. • This brochure does not form a part of agreement or any legal document, It is easy display of project only. • Right of any changes in design and specifications, elevation will be reserved with the developers.

HONEST CR\_98243\_85808



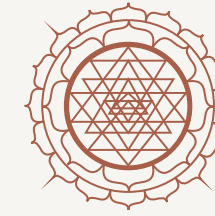
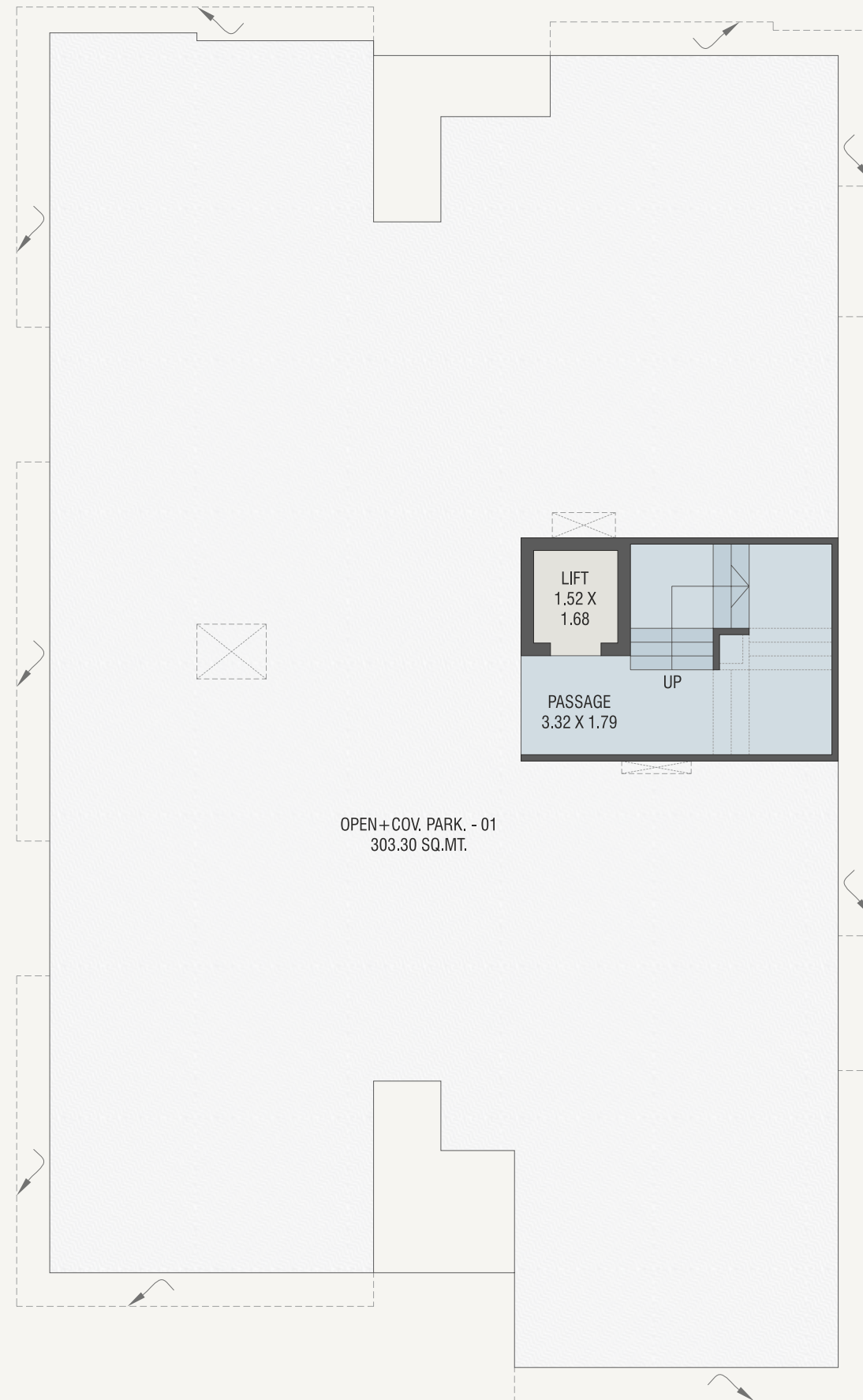




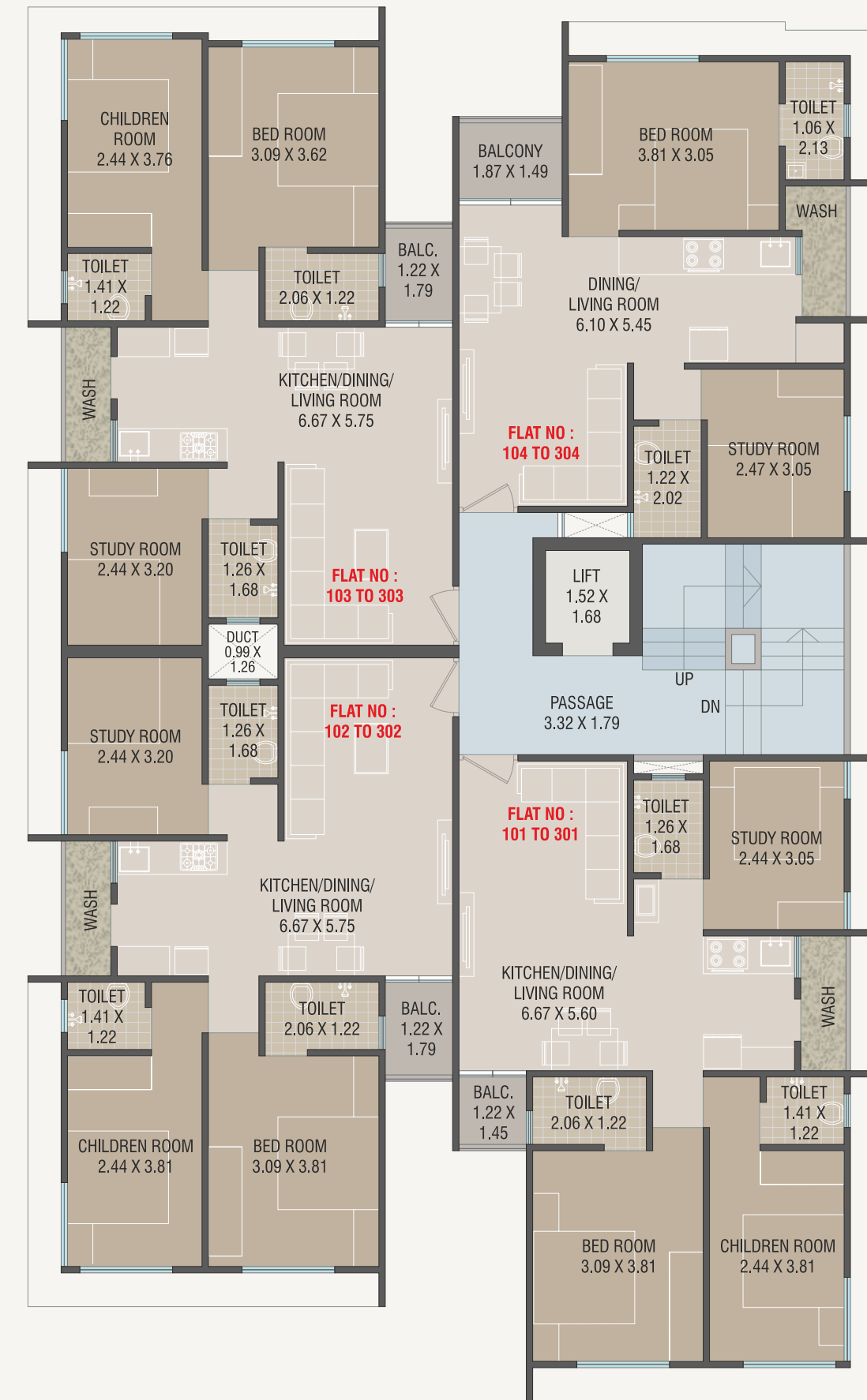




# GROUND FLOOR LAYOUT

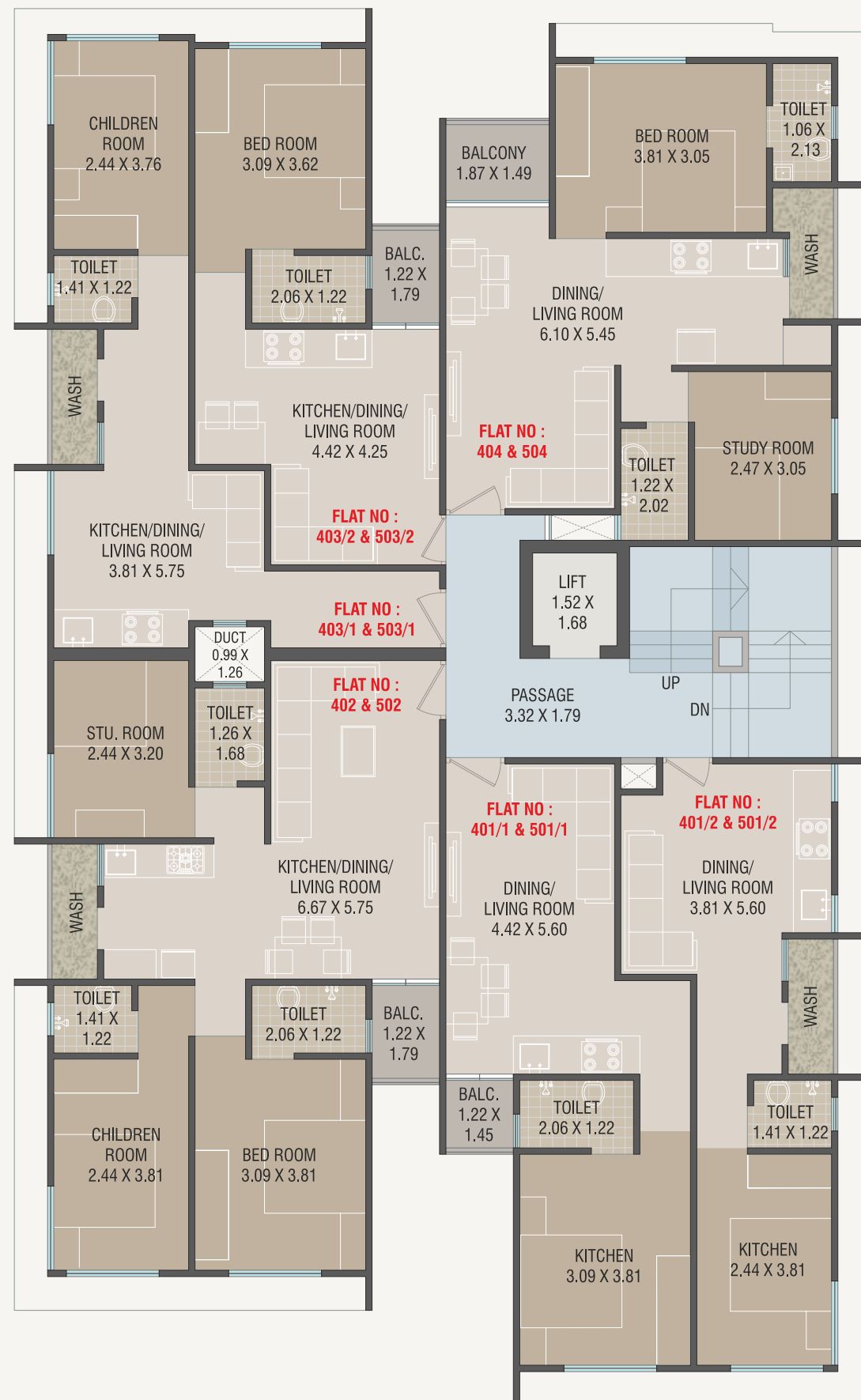


# 1ST TO 3RD FLOOR PLAN





## 4TH & 5TH FLOOR PLAN



## SPECIFICATIONS...



**STRUCTURE :**  
R.C.C. Structure design by approved Structural Engineer.



**FLOORING :**  
Vitrified Tiles flooring in rooms.



**WINDOWS :**  
Powder coating Aluminium window.



**DOOR :**  
Attractive main door with safety lock.



**KITCHEN :**  
Granite Platform with S.S. Sink & Glazed tiles dado upto lintel level



**ELECTRIFICATION :**  
Concealed Copper Wiring with Sufficient Electrical Points.



**TOILET & PLUMBING :**  
Toilet with Ceramic Tiles Flooring and Glazed Tiles Dedo upto Lintel Level. Concealed Plumbing and C.P, Fitting in all Toilets.



**FINISHING :**  
External Plaster with Decorative Acrylic Paint and Internal Smooth Plaster with Cement Putty.



**TERRACE :**  
Water proofing with china mosaic flooring

## AMENITIES

- Elegant entrance Gate with Security cabin
- Ample Car Parking
- Electric Geyser Point in all Bathrooms
- Power back-up for Lift, Passage & Parking light
- Standard quality Lift
- Brickbat water proofing treatment and china mosaic on terrace
- Underground cabling for esthetic look of the project
- CCTV Camera
- 24 X 7 Water Supply
- Over Head & Under Ground Water Tank