



Project By:



Developers:

Site : Shantam Nirvanta,
Nr. Neelam Party Plot,
Bh. Aditya Edifice, Chhani side Canal Rd,
Vadodara, Gujarat-390024

Mob.: +91 7572 940 940
Email: shantamnirvanta@gmail.com
Website: www.shantamnirvanta.com

Architect:
Rishi Architect

Structure:
ASHOK SHAH
& ASSOCIATES

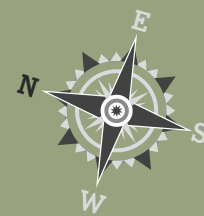


Where your
Aspirations
finds new heights





Typical Layout Plan



SOLID WASTE PLATFORM

TRANSFORMER

COMMON PLOT
368.50 SQ.MT.

50% PARKING ON
COMMON PLOT
184.25 SQ.MT.

PARKING
AREA
31.32 SQ.MT.

18.00 MT. WIDE ROAD

PARKING AREA-02
158.74 SQ.MT.

DN
PASSAGE
4.22 X 4.18
UP

LIFT
1.75 X
1.80
F. LIFT
1.75 X
1.80

TOWER-A

PARKING AREA-01
158.74 SQ.MT.

RAIN WATER
HARVESTING PIT

DN TO BASEMENT

TOWER-B

PARKING AREA-02
1.32.59 SQ.MT.

LIFT
1.75 X
1.80
UP
PASSAGE
5.33 X 2.65
F. LIFT
1.75 X
1.80
DN

PARKING AREA-01
1.32.59 SQ.MT.

9.00 MT. WIDE ROAD

PARKING AREA-02
158.74 SQ.MT.

DN
PASSAGE
4.22 X 4.18
UP

LIFT
1.75 X
1.80
F. LIFT
1.75 X
1.80

TOWER-C

PARKING AREA-01
158.74 SQ.MT.

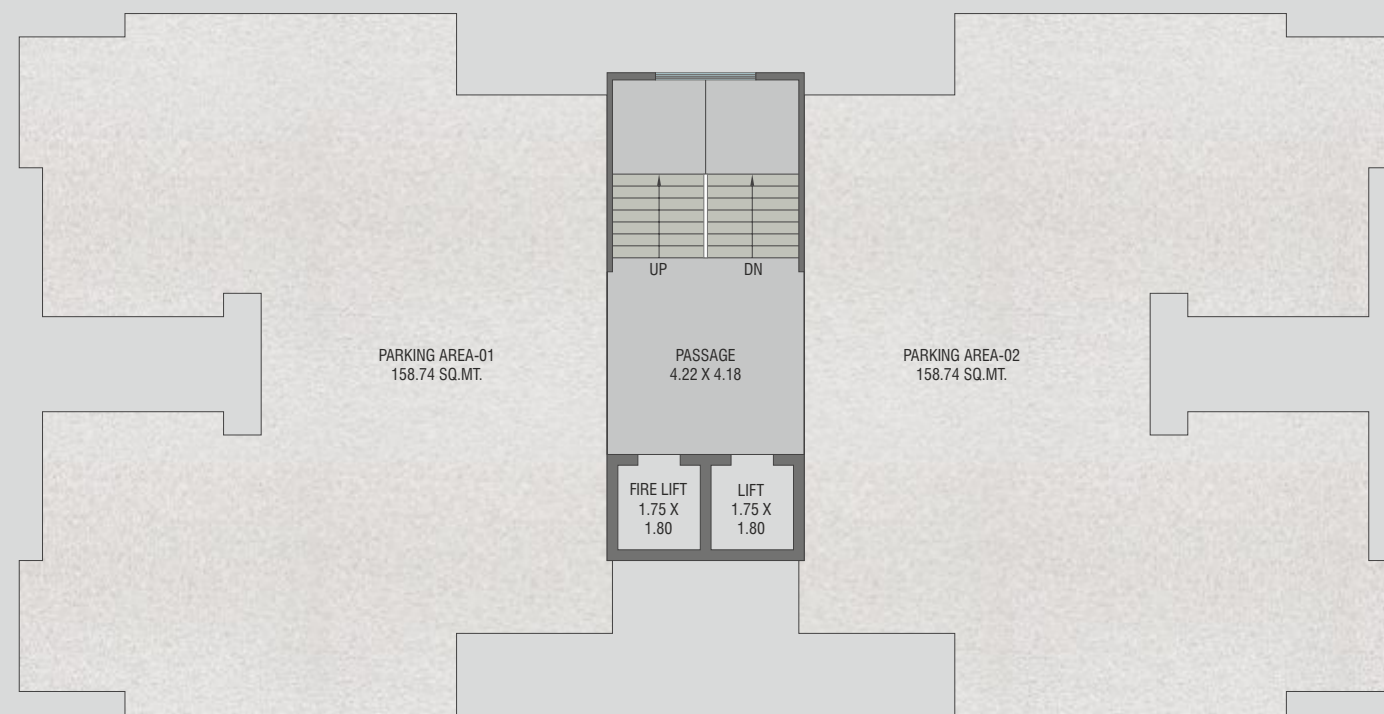
WATER
TANK

SQAK
PIT

TO CORPORATION
MAIN CHAMBER

9.00 MT. WIDE ROAD

Tower-A : Ground Floor Plan



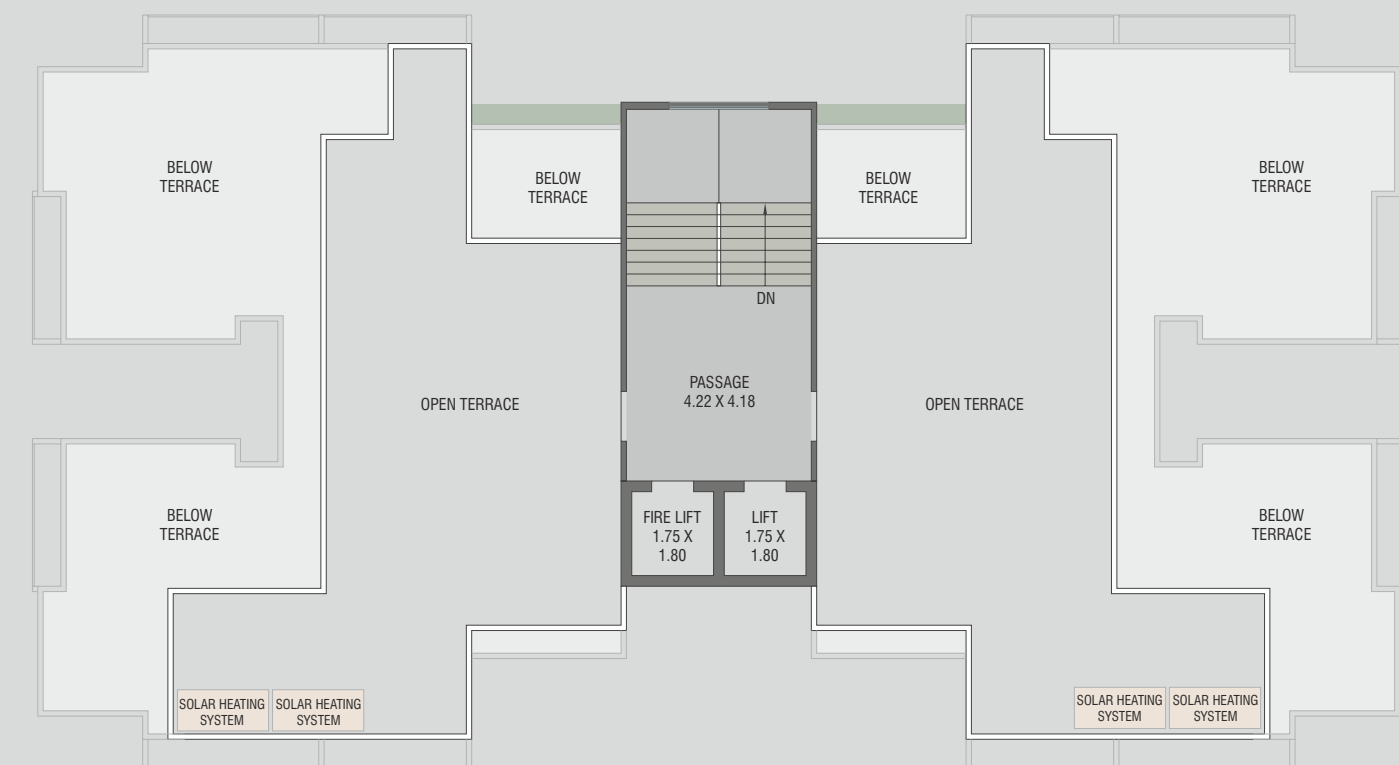
Tower-A : 12th Floor Plan



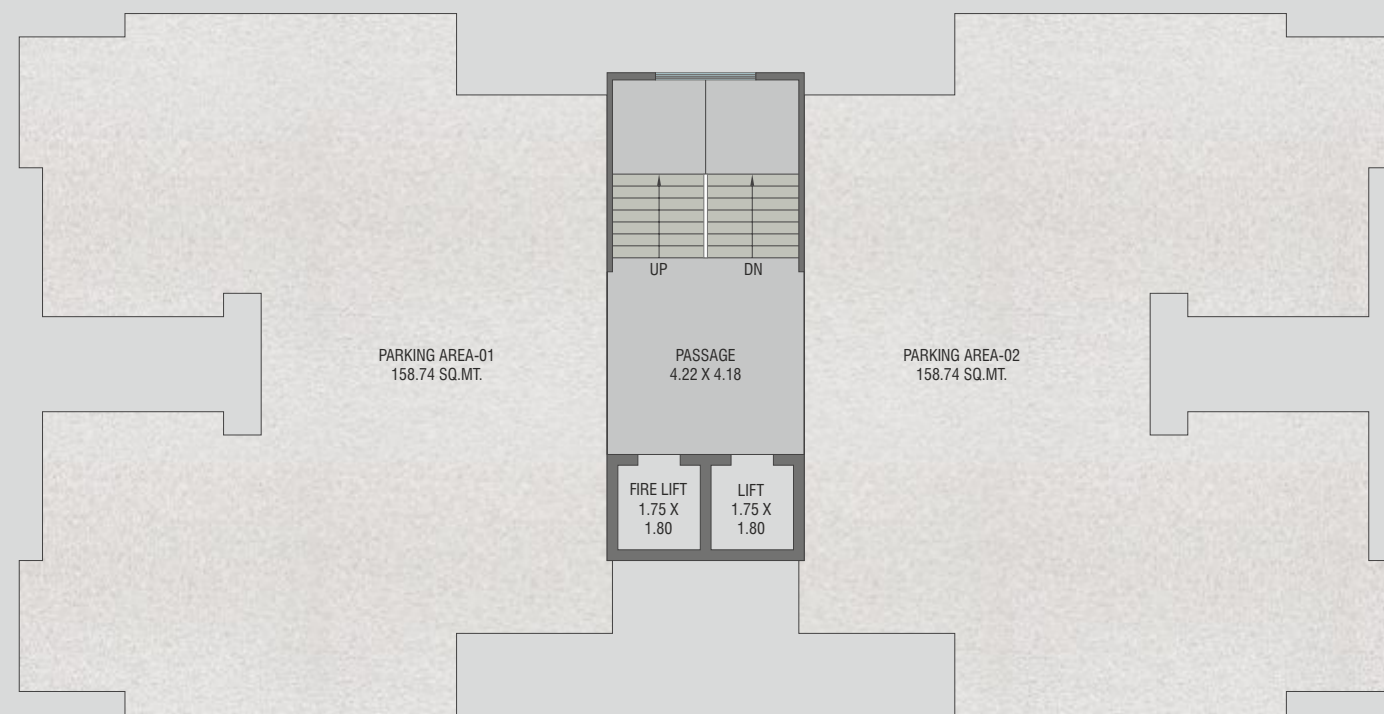
Tower-A : Typical floor plan (1st to 11th)



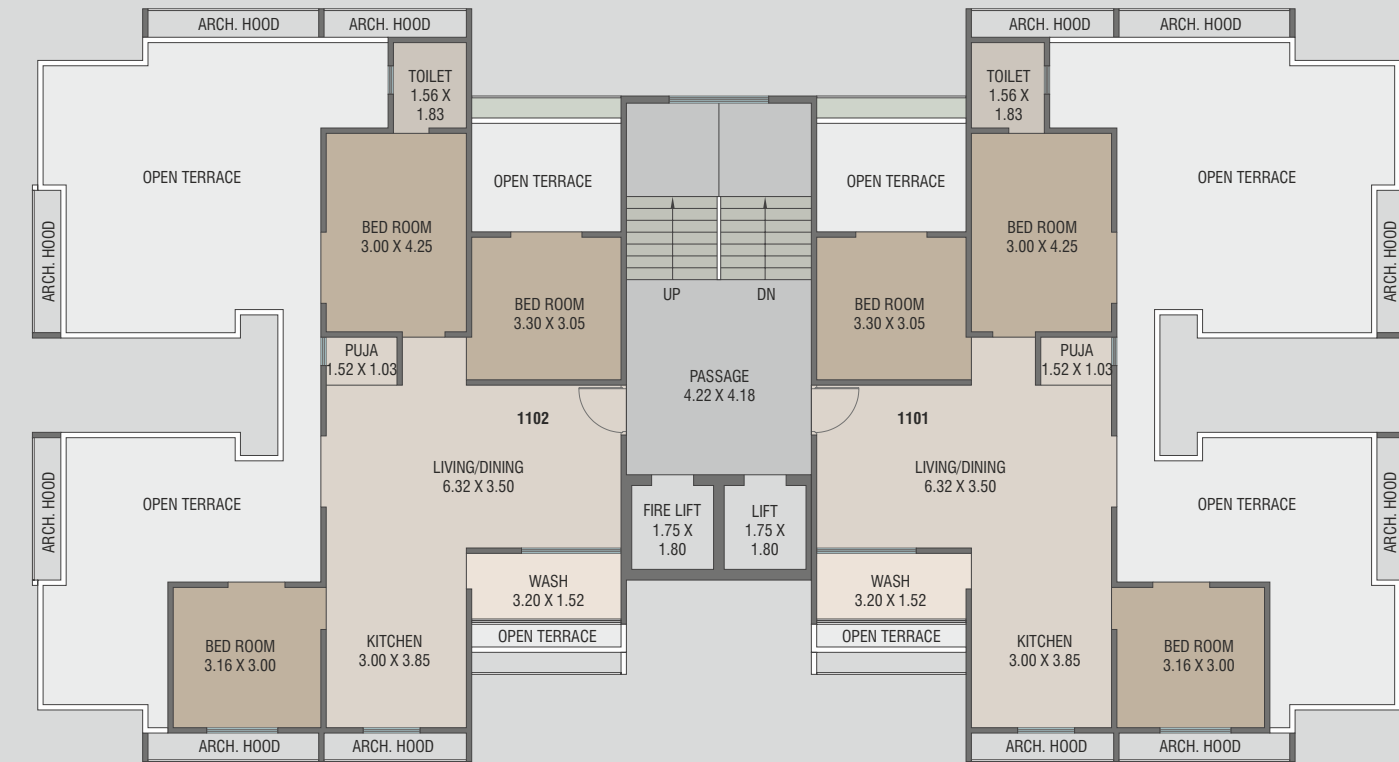
Tower-A : Terrace Floor Plan



Tower-C : Ground Floor Plan



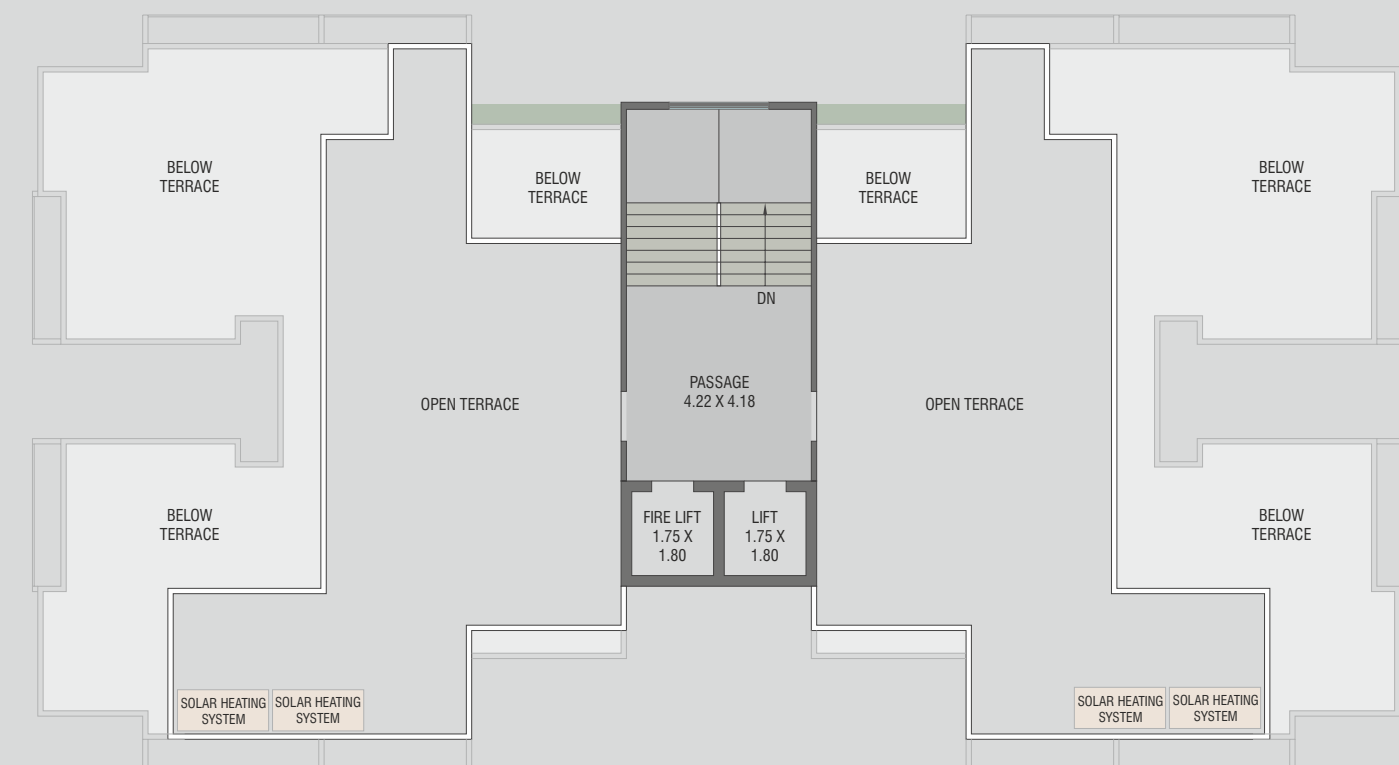
Tower-C : 11th Floor Plan



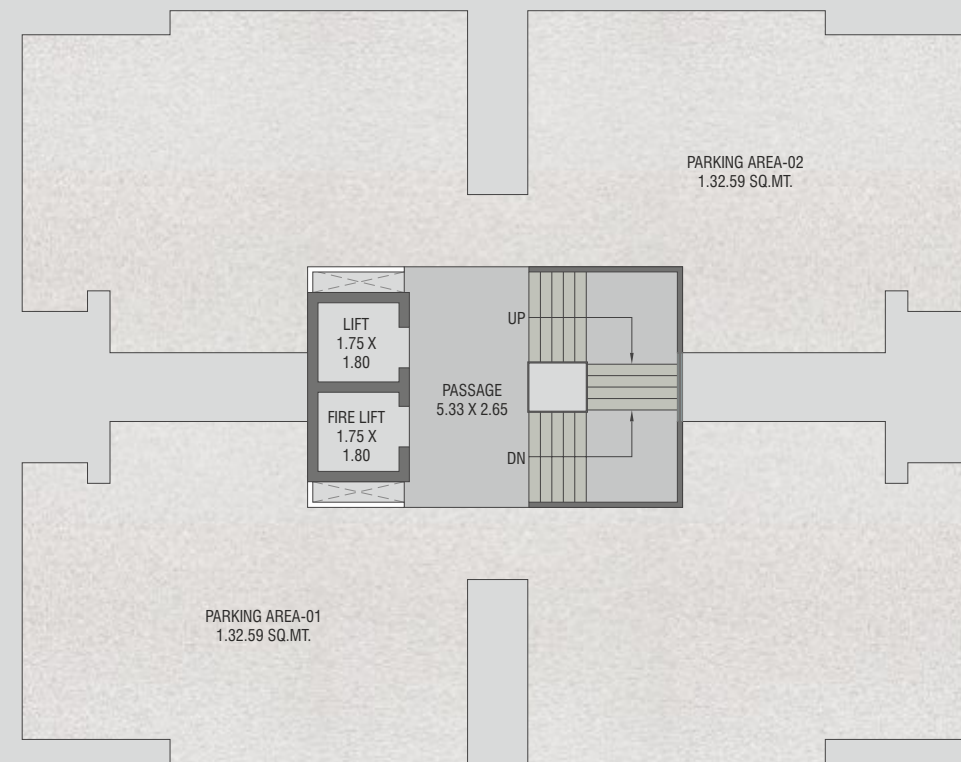
Tower-C : Typical floor plan (1st to 10th)



Tower-C : Terrace Floor Plan



Tower-B : Ground Floor Plan



Tower-B : 12th Floor Plan



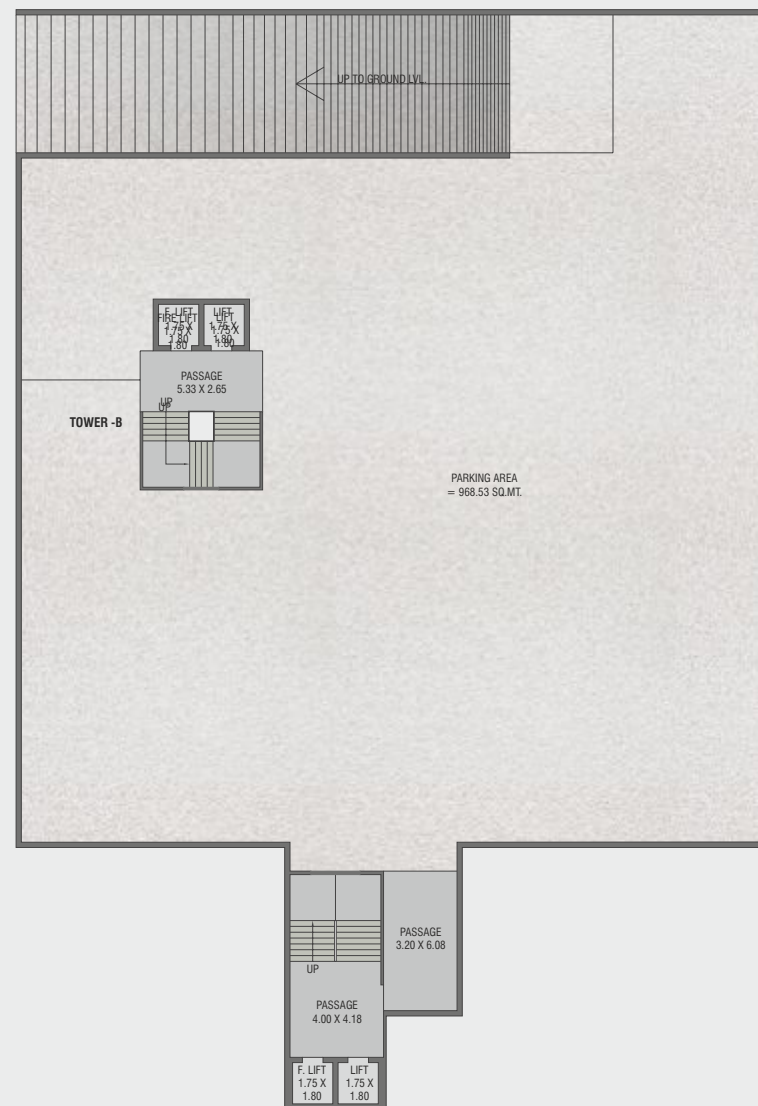
Tower-B : Typical floor plan (1st to 11th)



Tower-B : Terrace Floor Plan



Tower-B,C : Basement Floor Plan

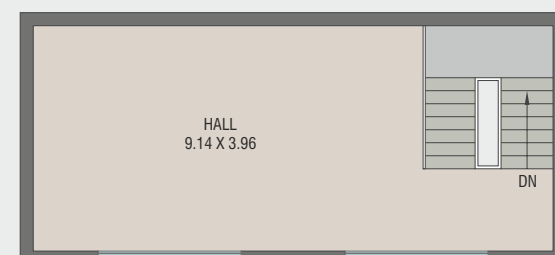


CLUB HOUSE

Ground Floor Plan



First Floor Plan



Valuable Amenities

- Elegant entrance gate with security cabin
- Water body in Main Entrance
- Water Harvesting
- 24 Hrs Water supply for under ground & overhead water tank with sensor
- Anti termite Treatment
- Alloted parking
- 24 Hours Security
- Entire Campus under CCTV camera surveillance
- Video door security system in each flat
- POP in Living & Dining Area
- R.O. system for each flat
- Electric Geyser in all bathrooms
- Standard quality lift
- Power back-up for Lift & Common area
- Landscape garden with children play equipment
- Underground cabling for esthetic look of the project
- RCC trimix road with designed street light poles
- Attractive name plate & letter box
- Brickbat water proofing treatment and china mosaic on terrace





Specification

FLOORING

- Superior quality 32" x 32" Vitrified flooring
- Paver blocks in parking area

KITCHEN









- Granite top platform with S.S. sink
- Decorative Glazed tiles dedo upto lintel level

DOOR - WINDOWS

- Attractive main door in teak wood frame or equivalent
- Good quality flush door in all bedrooms & bathroom with laminates on both side
- Aluminum powder coating window
- Safety grill in window

COLOUR

Amenities

- | | |
|--|---|
|  AC Multipurpose Hall |  Landscaped Garden |
|  AC Gymnasium |  Senior Citizen Sitting Area |
|  Indoor Game Room |  Yoga Zone |
|  Children's Play Area |  Open Air Theatre |

- Paint to exterior surface wall and putty finish with paint for internal wall surface.

ELECTRIFICATION

- Concealed wiring of standard quality with modular switches
- T.V. point in Living room & Master bedrooms
- A.C. point in all bedrooms

TOILET / PLUMBING

- Standard quality sanitary ware & branded quality plumbing fittings
- Decorative glazed tiles dedo upto lintel level with modern concept
- Ceramic tiles in flooring

