

KEY PLAN



Developers:

Shubh Life Space

Site:

"SHANTAM PARADISE",
B/s Pramukh Party Plot,
Opp. Sky Marc, Vemali, Sama-Savli Road, Vadodara.

Call: **9909006545**

Architect:



Structure:

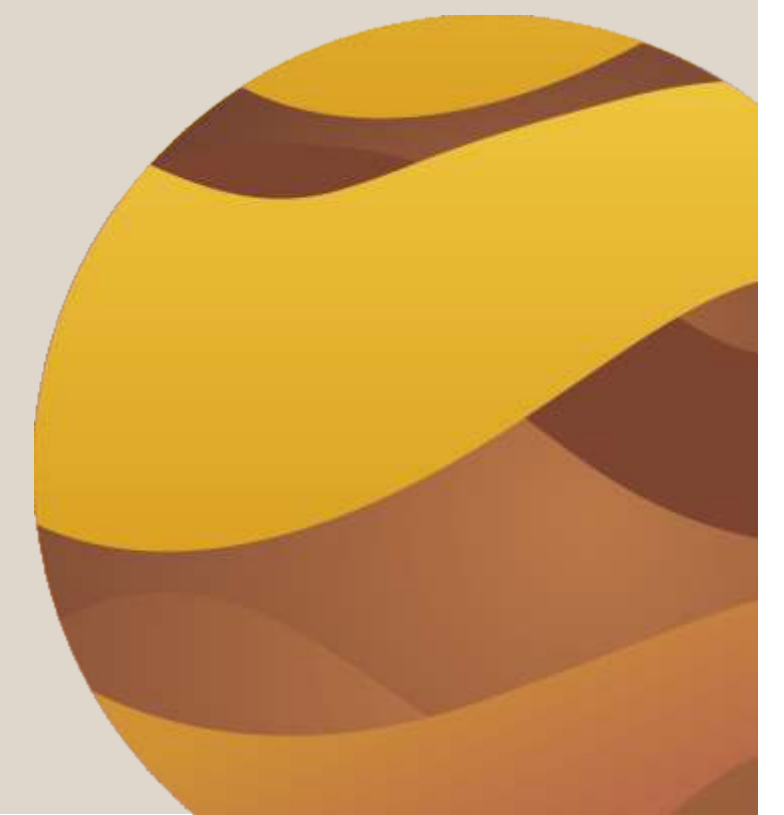


Mode of Payment :

- 30% Booking Amount • 10% Plinth Level • 15% 2nd Slab • 15% 4th Slab • 10% 6th Slab • 10% 8th Slab • 10% Finishing

DISCLAIMER : All furniture/objects shown in the plan are for presentation & understanding purpose only. By no means, it will form a part of final deliverable products. • Right of any changes in dimensions, design & specifications will be reserved with the developer, which shall be binding for all members. • External changes are strictly not allowed. • Documentation & Development charges, Stamp Duty, GST, MGVCCL meter deposit should be levied separate. • Each member needs to pay maintenance deposits separately. • In case of booking cancellation, amount will be Refunded from the booking of same premises and minimum of rupees 50000/- will be deducted from the booking amount • In case of delay of water supply, Light connection, Drainage work by VMSS/MGVCL Developers will be not responsible • Possession will be given after one month of all settlement of account. • Extra work will be executed after receipt of full advance payment • The developer reserve the full right to make any changes. • This brochure does not form a part of agreement or any legal document, It is easy display of project only. • Right of any changes in design and specifications, elevation will be reserved with the developers.

HONEST CR_98245 85808





SPECIFICATIONS....



STRUCTURE :

R.C.C. Earthquake Resistance Frame Structure.



WALL FINISHES :

Interiors : Cement Putty
Exteriors : Double Coat Plaster with Weather Resistant Paint.



ELECTRIFICATION :

Concealed Wiring of Standard Quality with Modular Switches.
T.V. Point in Living Room & Master Bedrooms, A.C. Point in all Bedrooms.
General Lighting in Common Areas.



DOOR :

Attractive Main Door in Teak Wood Frame or Equivalent.
Good Quality Flush Door in all Bedrooms with Laminates on Both Side.



WINDOWS :

Aluminum Powder Coating or Anodize in Window.



FLOORING :

Good Quality Vitrified Tiles Flooring in Rooms & Paver Blocks in Parking Area.



KITCHEN :

Granite Top Platform with S.S. Sink & Decorative Glazed Tiles.



BATHROOMS :

Standard Quality Sanitary Ware & Branded Quality Plumbing Fittings.
Decorative Glazed Tiles Dedo with Modern Concept.
Ceramic Tiles in Flooring.



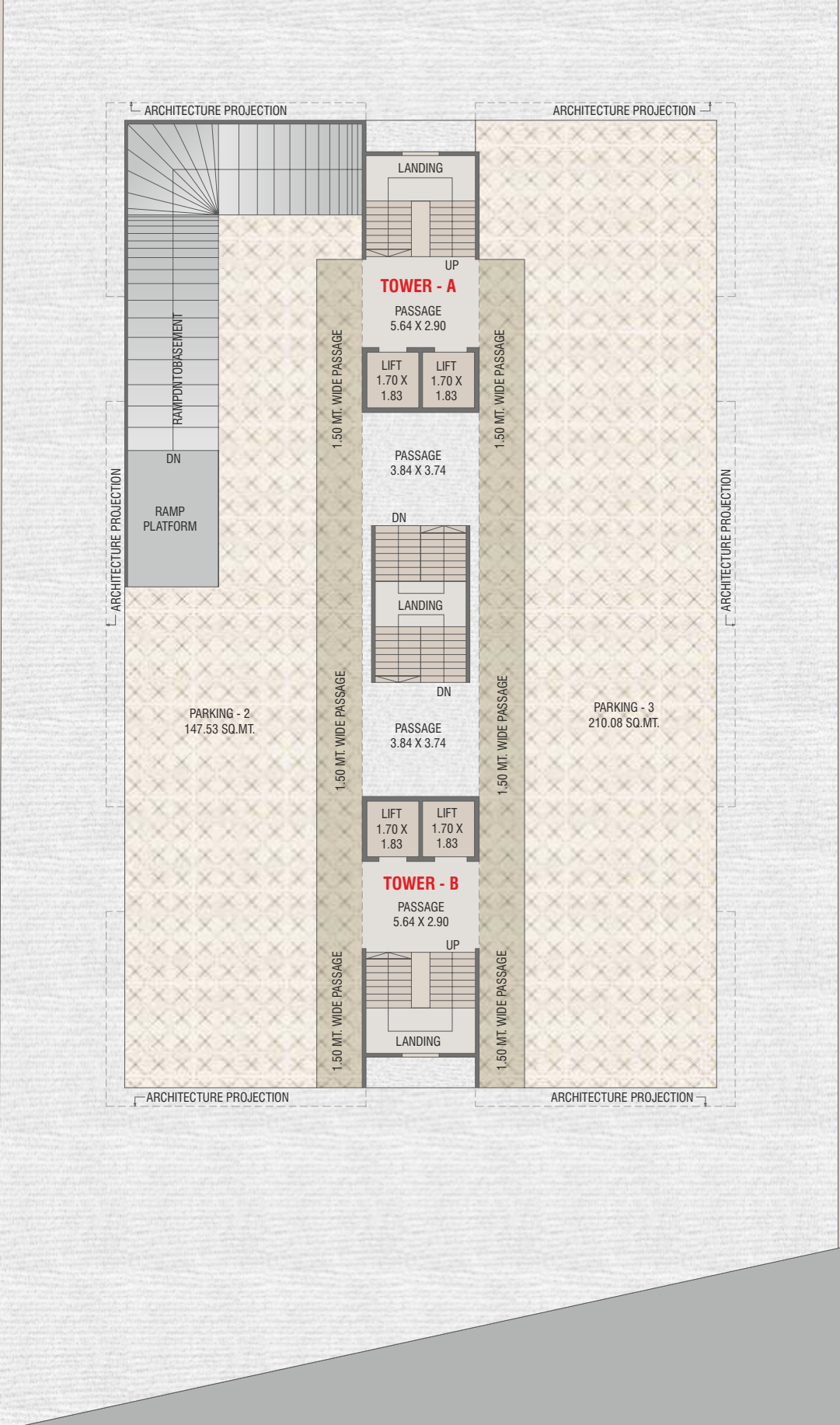
TERRACE :

Water Proofing with China Mosaic Flooring.

Valuable Amenities

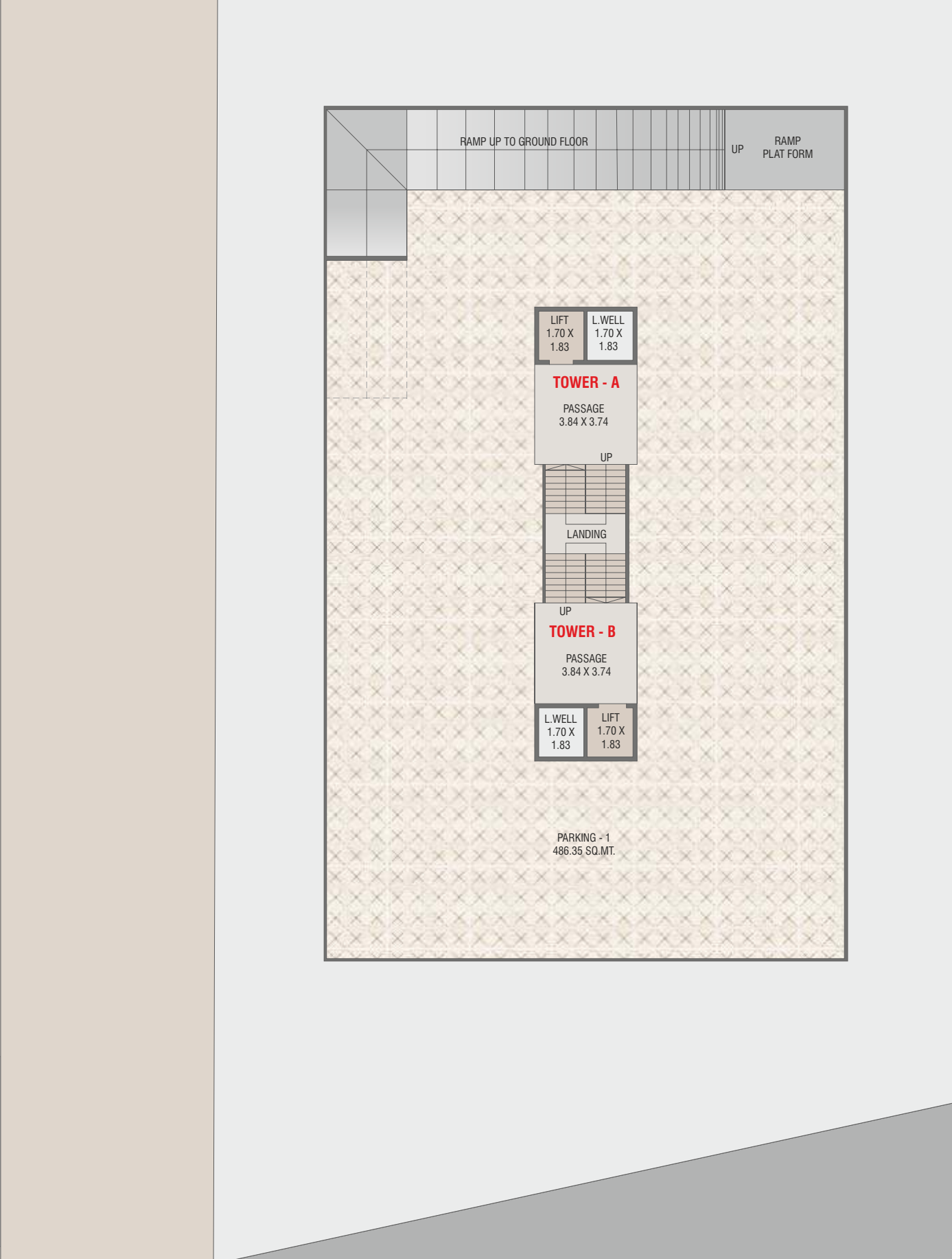
- Elegant Entrance Gate with Security Cabin.
- Ample Parking.
- R.O. System for Each Flat.
- Standard Quality Lift.
- Brickbat Water Proofing Treatment and China Mosaic on Terrace.

Ground Floor Layout Plan



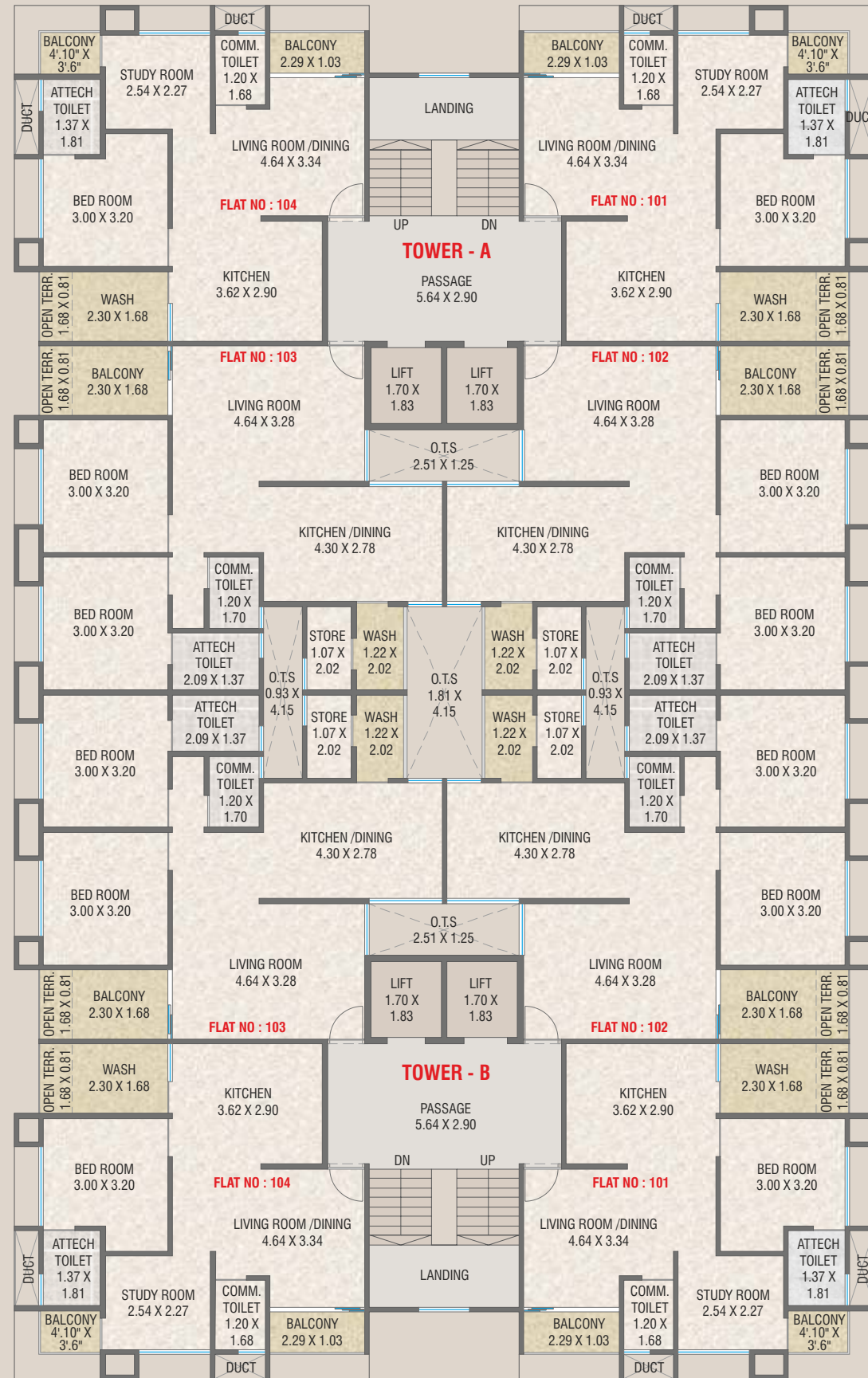
18.00 MT. WIDE ROAD

Basement Floor Layout Plan



18.00 MT. WIDE ROAD

First Floor Layout Plan



Typical Floor Layout Plan (2nd to 7th Floor)

