



Shivajay

Homes

2 BHK FLATS



Shivalay

Gucci Cellular 9 to 9

PAR

PARKING

PARKING

MAIN GATE

A-4

B-4

A-5

B-5

6

B

LIFT
4'-6"
X
5'-0"

A-7

B-7

A-8

B-8

2.86
X
3.97

3.43 X 4.99

3.43 X 4.99

2.86 X 3.97

3.35 X 3.97

2.40 X 3.97

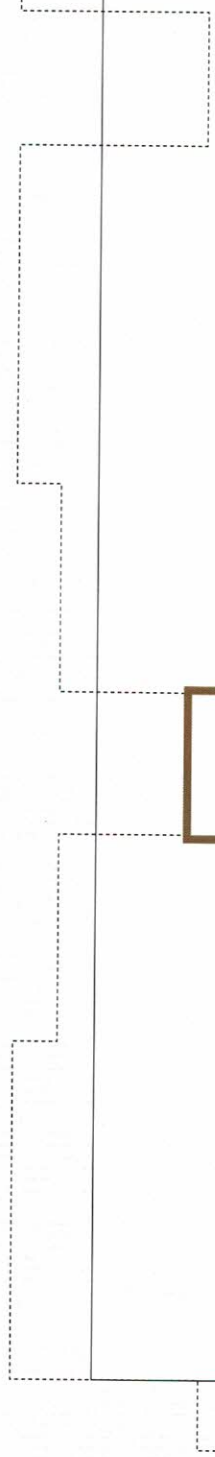
3.35 X 3.97

2.86 X 3.97

2.40 X 4.99

PARKING

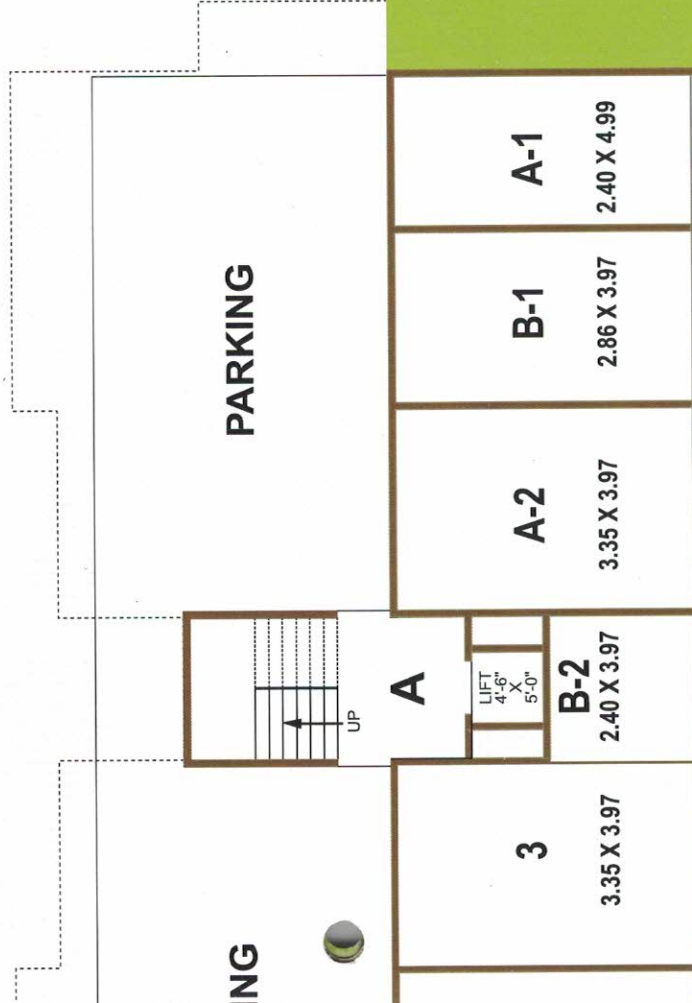
MAIN GATE



30.00 MTR. WIDE ROAD

MAIN GATE

GARDEN



Tower - A-B

2 BHK





Shiyalay

Homes

Specification

Carefully considered material & labor specifications, so as to offer a comfortable living experience.

STRUCTURE:

Resistant RCC frame structure & masonry as per structural engineer's design.

WALL FINISHING:

Birla Putty on inside wall & waterproof exterior acrylic paint on outside wall.

WINDOWS:

Color powder coated Aluminum windows with stone frame & safety Grills.

DOORS:

Decorative entrance main door with standard fittings and internal doors made of good quality flush doors with both side laminated.

BATHROOM:

Branded premium quality bathroom fittings. C. P. Fittings, Good quality sanitary ware & designer glazed tiles dado up to lintel level.

KITCHEN:

Granite platform in kitchen with stainless steel sink and Glazed tiles up to lintel level.

FLOORING:

Wall to wall Vitrified flooring.

ELECTRICAL:

All electrical wiring done with concealed PVC insulated wires and modular switches with sufficient power light and power outlets. Provision for split AC Light Point in one bedroom only 2 BHK flats.

PLUMBING SANITORY:

Systematic concealed UPVC / CPVC Plumbing.



TERRACE:

Water proofing or china mosaic flooring.



- LEISURE FACILITIES**
- Landscaped garden with leisure sitting.
 - Children's play area.
 - Ample parking space.
 - Main gate with security cabin.
- CONVENIENCE**
- Individual RO System.
 - Underground cabling for a wire free look.
 - Good quality lift.
 - CCTV Camera Parking area 24x7 security
- OTHERS**
- Anti - Termite treatment at ground level.
 - Decorative paving on ground floor.
 - Underground & overhead water tank
 - with sufficient storage.

Stapay Stone

dreamt about.

you always

a lifestyle

Fostering





Shivalay

Homes

2 BHK FLATS & SHOPS

Shivalay Homes

Near Maharshi Atreya Health Centre,
Undera Refinery Road,
Undera,
Vadodara,
Gujrat (INDIA)

Architect

ARYA Associates

Nitin Kapadi

Structural Designer

Manish Shah

A Project by : Shakti Developers

Contact No. : 84888283

Notes:

Possession will be given after one month of settlement of all accounts.
Extra work will be executed after receipt of full advance payment.
Documentation charges, stamp duty, service tax, m.g.v.c.l charge & Common maintenance charges will be extra.
Any new Central or state government Taxes. If applicable shall have to be paid by the clients.
Elevation alteration will be not allowed in any circumstances.
Continuous default payments leads to cancellation.
Architect /Developers shall have the right to change or raise the scheme or any details here in and any change or revision will be binding to all.
Refund in case of cancellation will be made within 30 days from the date of booking of new client only. Administrative expense of 20,000/- & the amount off extra work will be deducted from refund amount.
Any plans, specification or information in this brochure can not form part of an offer, contract or agreement.

KEY PLAN

