

Project by
श्री Group



श्रीकुंज Greens

3-4&5BHK LUXURIOUS BUNGALOWS

**SAMPLE BUNGALOWS READY
WITH DEVELOPED INFRASTRUCTURES**



Layout Plan





Club - Ground Floor



Club - First Floor

Ground Floor



TYPE A

1st Floor



Ground Floor



TYPE B

1st Floor



2nd Floor



Min. Plot Area - 1450 sq.ft
B.A. - 2920 sq.ft | S.B.A. - 3505 sq.ft

2nd Floor



Min. Plot Area - 1386 sq.ft
B.A. - 2792 sq.ft | S.B.A. - 3350 sq.ft



Club House facilities

- Designer water body
- Swimming pool with shower / change room
- Banquet hall & party lawn to Celebrate memorable occasions
- Indoor games like pool table, table tennis etc.
- Well equipped AC gymnasium / Yoga room

Landscape design

- Beautiful sitting arrangement
- Children play area with sandpit

Campus Amenities

- Impressive gate with Security Cabin & compound wall.
- All internal trimix RCC road with paver block.
- Street light & tree plantation on internal roads.
- Water supply sewage system and underground Electricity.
- Solar Lighting system for all roads & common amenities

Unit Amenities

- Video Door Phone
- Uniform Name Plates
- R.O. Water purifier
- Anti termite treatment
- Underground & Overhead Tank
- China Mosaic flooring to terrace

Ground Floor



1st Floor

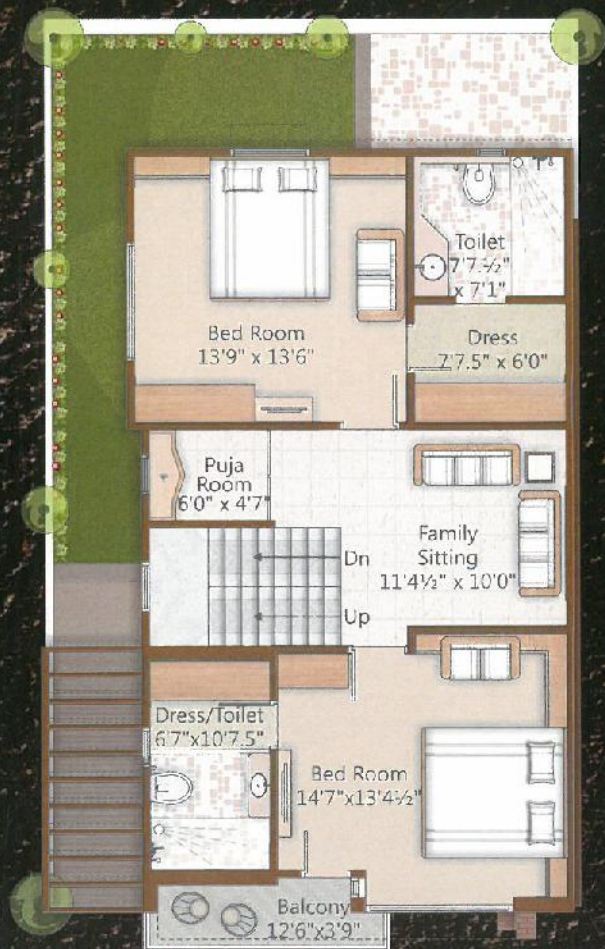


TYPE C

Ground Floor



1st Floor



TYPE D

2nd Floor



Min. Plot Area - 1302 sq.ft
B.A. - 2671 sq.ft | S.B.A. - 3205 sq.ft

Specification

Structure : RCC & brick masonry as per structural engineer's design.

Wall finish : Inside smooth plaster with cement putty finish & acrylic paint & exterior surface with weather shield acrylic paint.

Electrification : Concealed copper wiring of ISI approved quality with modular switches separate AC points in all bedroom.

Doors : Decorative main door with standard fittings. all internal doors good quality flush doors with laminate & good fittings.

Flooring : Vitrified tiles flooring in all rooms.

Windows : Wooden windows with tinted glass & safety grills.

Kitchen : Granite kitchen platform with SS sink & glazed tiles dedo up to lintel level.

Bath room : Ceramic tiles flooring & decorative glazed tiles dedo up to lintel level.

Plumbing : Internal concealed plumbing with a good quality C.PVC fittings & good quality bath fittings.

2nd Floor



Min. Plot Area - 1130 sq.ft
B.A. - 2431 sq.ft | S.B.A. - 2917 sq.ft



Developers :

Shreekunj Corporation

Opp. Pratham Vatica,
Bs. Rutu Villa Duplex,
Nr. Shreenath Bungalows,
Opp. Yash Complex,
Gotri, New Alkapuri, Vadodara.

Enquiry : + 91 95740 45551,

+ 91 95740 45552

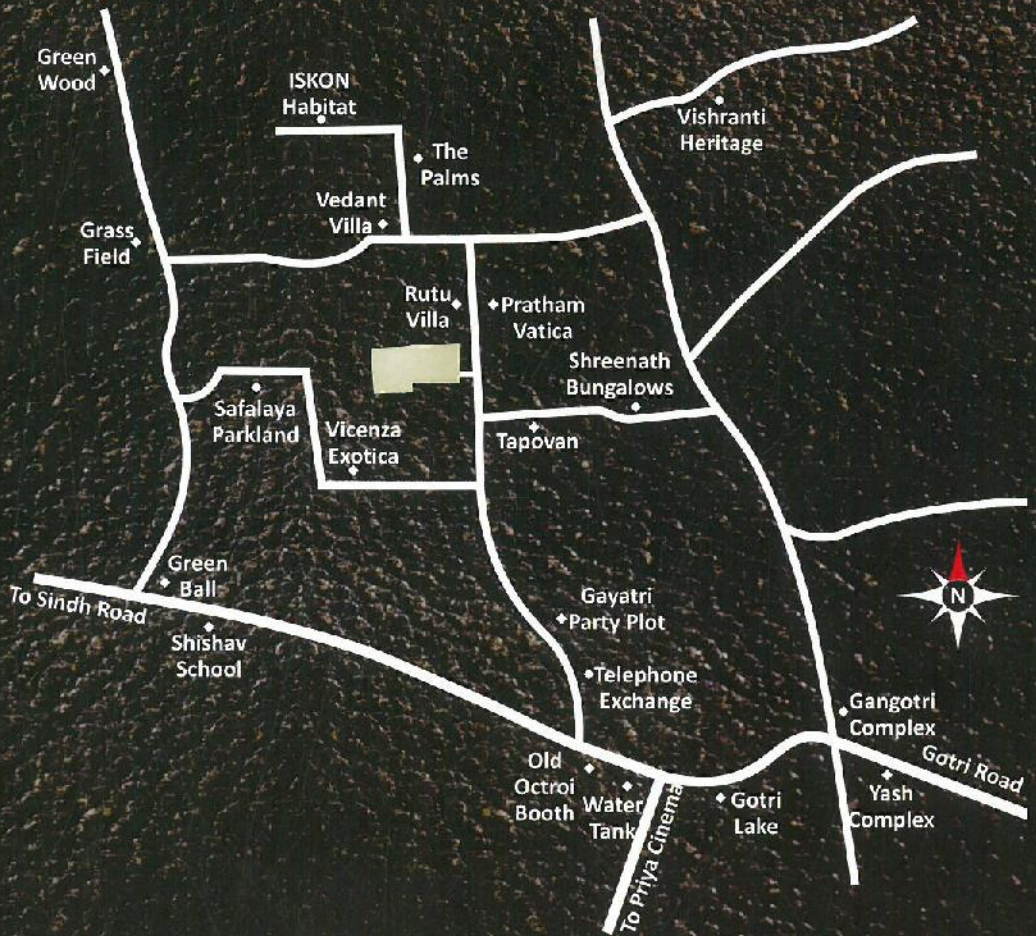
email : info@shreekunj.net

website : www.shreekunj.net

Architect : **Sarjak Associates**

Vadodara

Ph. : + 91 265 2483180



We request : Possession will be given after 30 days from settlement of all accounts. • Maintenance & Development Charge, Stamp duty, registration charges, municipal taxes & legal cost will be extra. • Central or State Government Taxes, service tax if applicable shall have to be borne by the clients. • Delayed in payment will be charged 18% per annum & Continuous default payments lead to cancellation. • Refund in case of cancellation will be made within 30 days from the date of booking of new client only. • Administrative expense of Rs. 25,000/- will be charged. • Architect/Developers shall have the right to change or raise the scheme or any details herein and any change or revision will be binding to all. • Project completion expected time may vary as it is highly dependent on external factors like labour, material availability and approvals from various authorities.

While every reasonable care has been taken in preparing this brochure, the organisers are not responsible for any inaccuracy in this contents. All plans, information and specifications are subject to change. This brochure is not a part of legal document.