

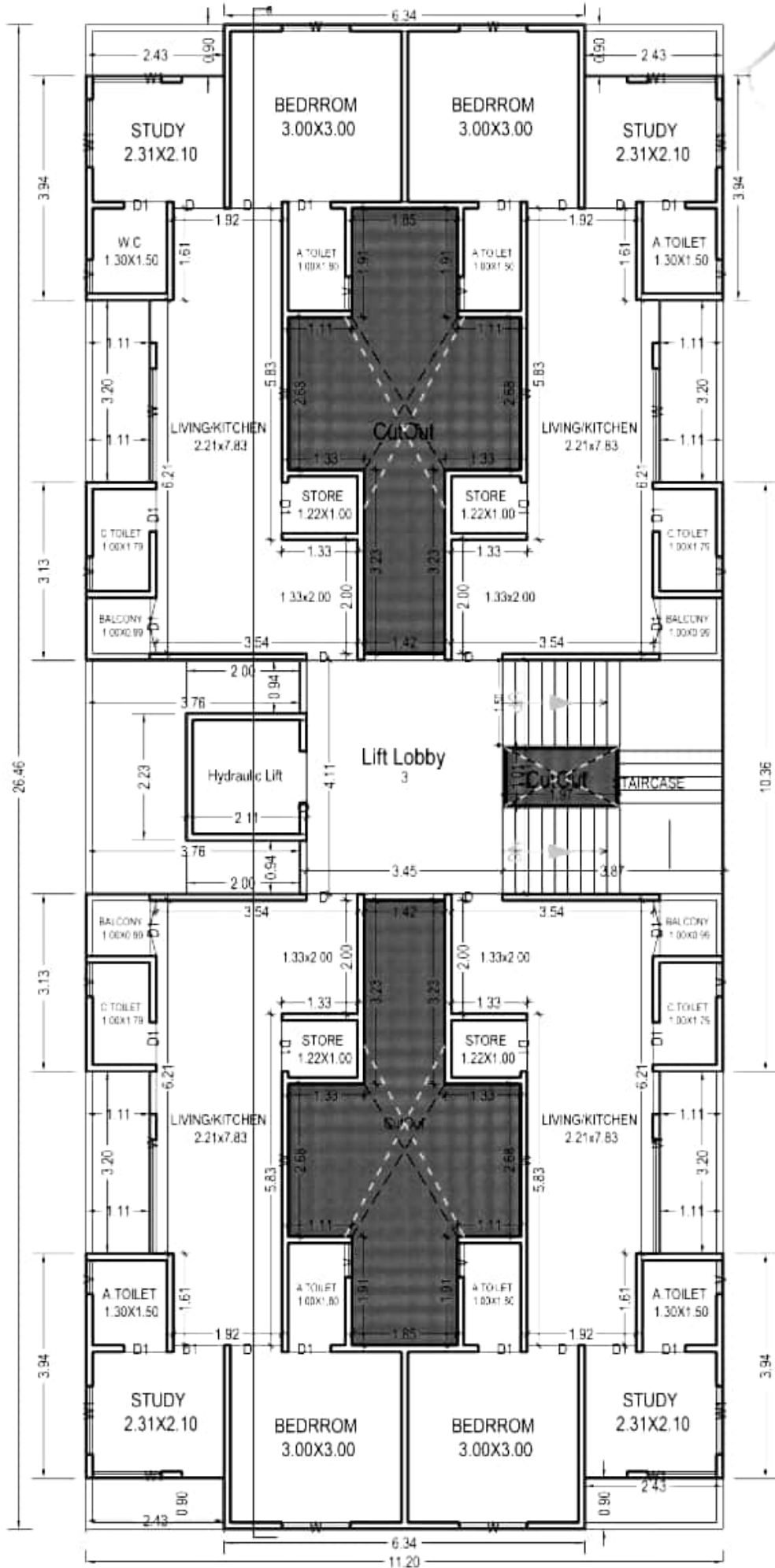


# SIDDHIVINAYAK HEIGHTS



NR. POLO GROUND, BEHIND BARODA HIGH SCHOOL, VADODARA - 390001.

TYPICAL FLOOR PLAN



## SPECIFICATIONS :

### • STRUCTURE :

Well designed RCC Frame structure and Block Masonary using superior quality material as per structural engineers designs.

### • FLOORING :

Porceleno tiles flooring in all rooms with skirting.

### • DOORS :

Decorative main door and flush internal doors.

### • WINDOWS:

Aluminium powder coated windows.

### • KITCHEN :

Granite platform with SS sink and designer glazed tiles up to ceiling.

### • BATHROOM :

Designer concept tiles upto lintel level with standard quality C.P. Fittings.

### • ELECTRIFICATION :

Branded ISI concealed copper wiring with branded switches.  
AC Point in master Bedrooms, MCB in main distribution box.

## AMENITIES

- Eco friendly surrounding Environment
- Solar Panels for common meter box
- CCTV camera
- Underground and overhead tank.
- Standard quality lift
- Paved block in parking
- Anti termite treatment
- Electric meter box.

### Developers:

NISARG DEVELOPERS

### Architects :

AMBICA CONSULTANTS

### Structural Consultant :

ZARNA ASSOCIATES

**Site:** Nr. Pologround, Behind Baroda High School, Vadodara-390001  
Mobile: 85111 77133, 99981 11683, 99134 39870

### Notes:

- Possession will be given after one month of settlement of accounts
- Extra work will be executed after receipt of full advance payment
- Documentation charges, stamp duty, GST & common maintenance charges will be extra.
- Elevation alteration will be not allowed in any circumstances
- Architect / Developers shall have the right to change or raise the scheme or any details herein and any change or revision will be binding to all.
- This brochure is not to considered as legal document.

### Payment Mode:

10% Booking amount | 10% Plinth Level | 10% First Slab Level | 10% Second Slab Level  
10% Third Slab Level | 10% Fourth Slab Level | 10% Fifth Slab Level | 10% Sixth Slab Level  
10% Plaster Work | 10% Before one month of Possession