



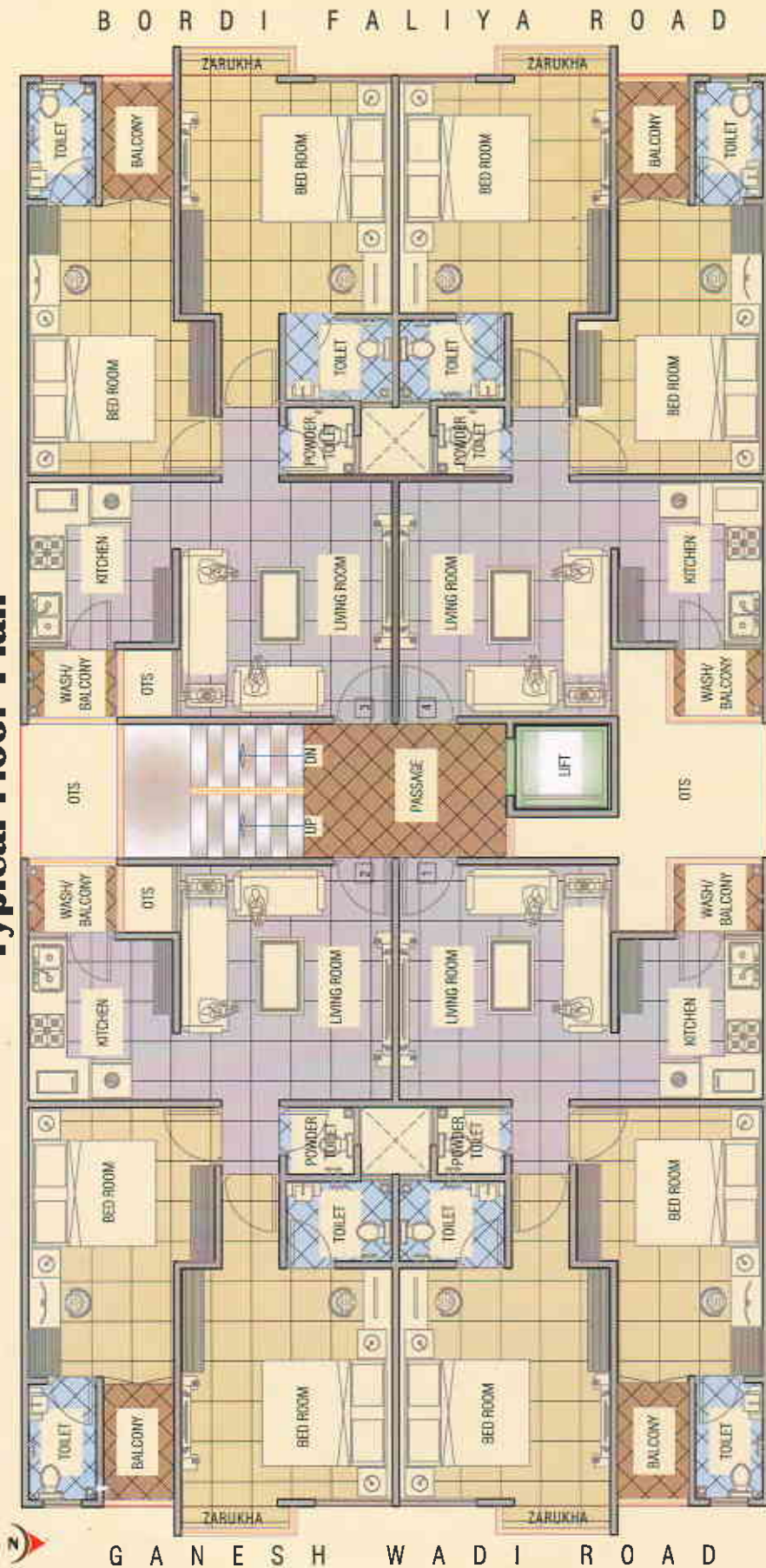
Modern Living @

॥ सुशीला साइट ॥

2 BHK Luxuries Flats

Bordi Faliya, Shiyabaug, Vadodara.

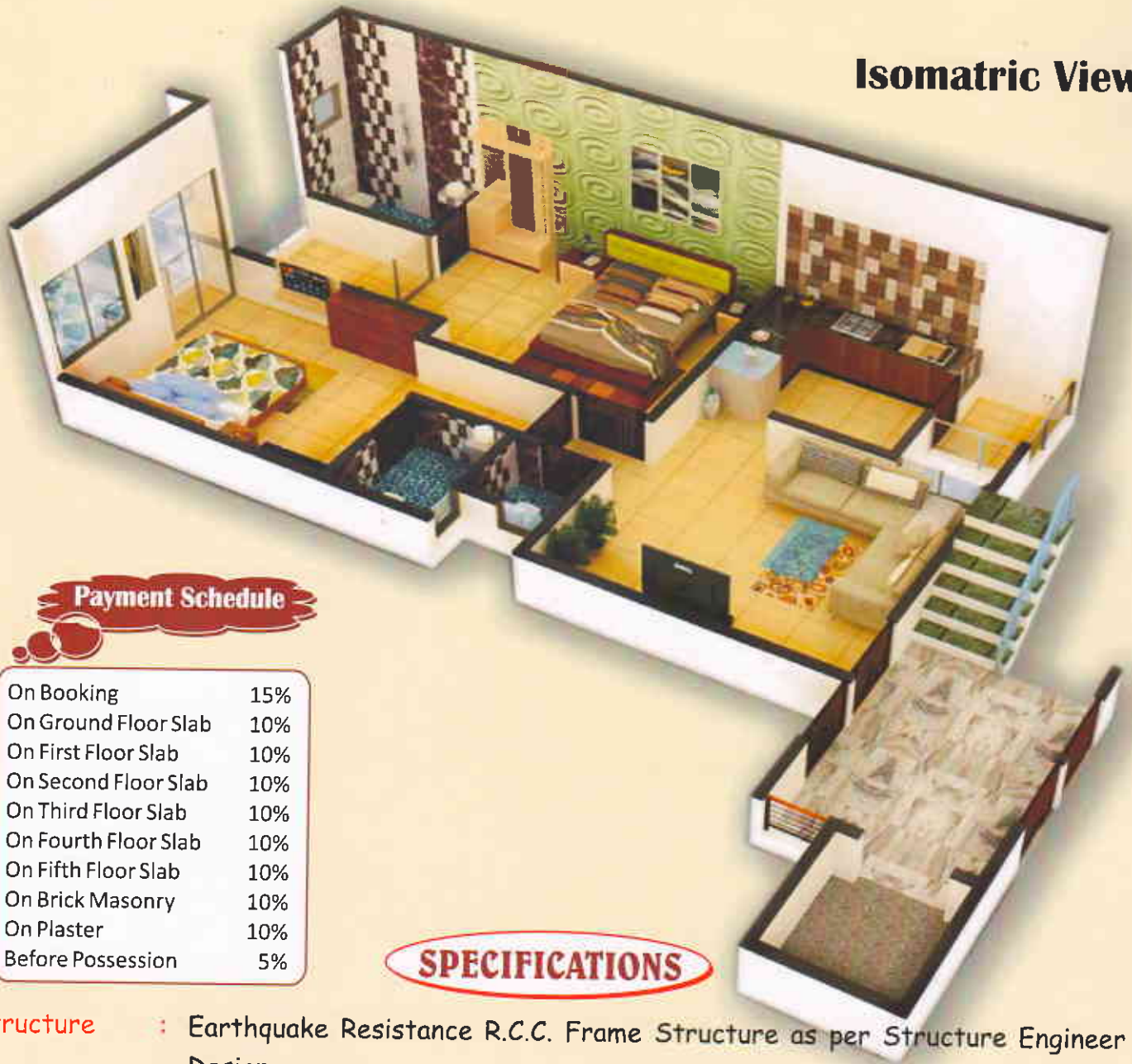
Typical Floor Plan



Valuable Amenities

- Over head water tank, for 24 hours water supply.
- Anti-termite Treatment in all Flat's Flooring & common Area.
- Ample Space of Parking with Decorative Entrance Gate & Paver Block Finishing.
- Standard quality Lift with power Backup Generator.
- C.C. TV Camera in Parking Area.
- R.O. System for Each Flat.
- Fire Safety System in Parking Area.
- Video Door Bell for each flat.
- Attractive Name Plate.
- Individual Post-Box on Ground Floor.
- POP Ceiling in Master Bed Room & Living Room (As per Architect's Design).

Isometric View



Payment Schedule

On Booking	15%
On Ground Floor Slab	10%
On First Floor Slab	10%
On Second Floor Slab	10%
On Third Floor Slab	10%
On Fourth Floor Slab	10%
On Fifth Floor Slab	10%
On Brick Masonry	10%
On Plaster	10%
Before Possession	5%

SPECIFICATIONS

- Structure** : Earthquake Resistance R.C.C. Frame Structure as per Structure Engineer Design.
- Wall Finish** : Inside Smooth Plaster & outside Double coat Plaster with Paint.
- Flooring** : Vitrified Tiles flooring in all rooms.
- Kitchen** : Sandwich Platform with Black Granite Top S. S. Sink and Door Height Dado of glazed Tiles on Platform.
- Doors** : Decorative main door & all internal door will be good quality fitting.
- Windows** : Aluminum Windows with full glass & Safety Grill.
- Bath Room** : Ceramic Tiles Flooring & Glazed Tiles Dado up to door Height.
- Electrification** : Concealed Wiring with Necessary Points inclusive of Refrigerator, TV with ISI Standard Wiring.
- Plumbing** : PVC Pipe fitting for water supply & drainage.



Developers :
Shree Siddhivinayak Developers

Site Address :
Bordi Falia, Siyabaug,
Vadodara.

Contact :
9974759111 / 333 / 444

Regd. Office :
102, Shaktikrupa Apartment,
Bhalerao Tekri, Raopura,
Vadodara-390001.

Legal Advisor :
Ajay Ghaisas

Planner :



Structure Engineer :
Dhrumesh Shah

Note :

- Stamp Duty, Registration charges, Legal Charges, Any type of Government levies, GEB & Maintenance Deposit Charges shall be borne by purchaser.
- Any Additional Charges or duties levied by the Government, local authorities during or after the completion of the scheme will be borne by the purchaser.
- In the interest of continual developments in design and quality of construction the developer reserve all purchasers shall abide by such changes.
- Charges/alternation of any nature including elevations, Exterior color scheme of the apartment or any other charge affecting the overall design concept an outlook of scheme are strictly NOT PERMITTED during or after completion of the scheme.
- Incase of delay in services by authority, developer will not be responsible.
- Extra Work will be chargeable & should be in Advance payment only.
- Possession will be handed over after 45 days of settlement of account.
- Continuance default payment leads to cancellation charges will be Rs. 20,000.

This Brochure is only for display and information of scheme and it will not treat as a legal document.