

A PROJECT BY PBG ASSOCIATES



Ohala

RESIDENCY

1 BHK Luxurious Flats



1 BHK

Typical Floor Plan



Typical Floor Plan 1st, 2nd, 3rd, 4th & 5th



GARDEN

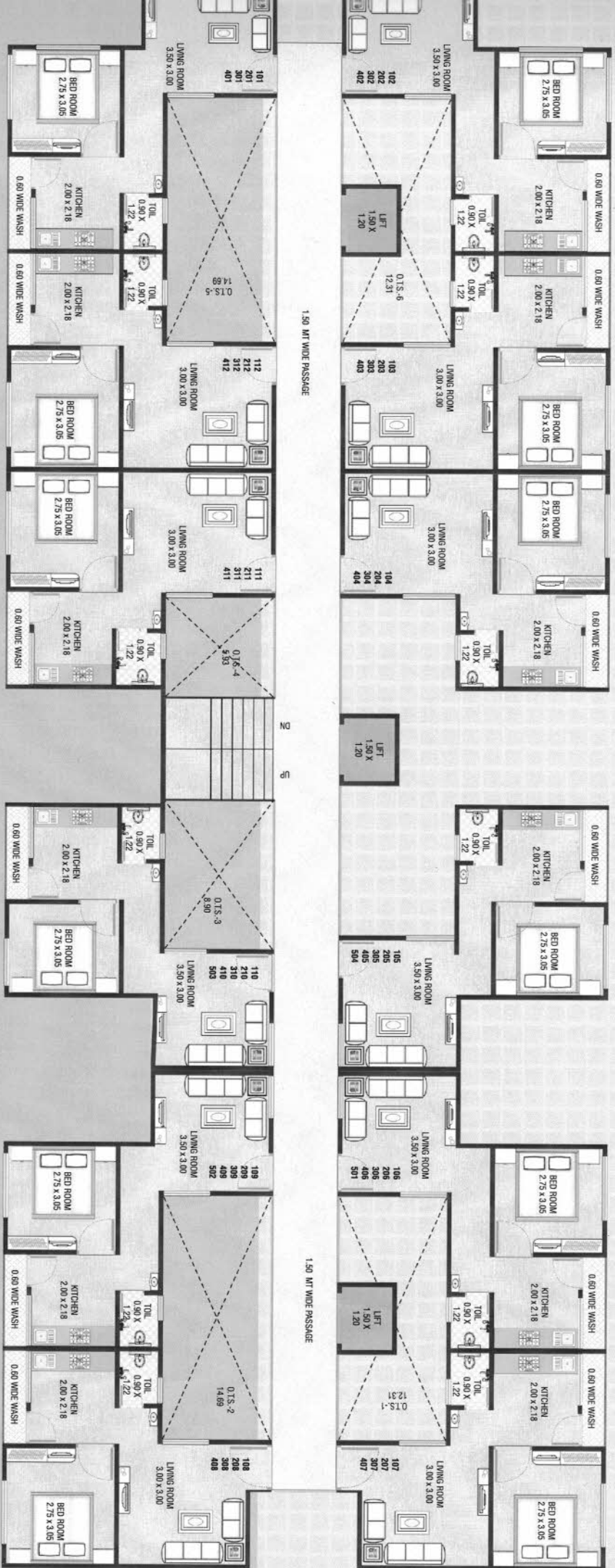
Office

9.00 MTR WIDE ROAD

ENTRY

24 Mt. Wide Road





1.50 M WIDE PASSAGE

DN
UP

1.50 M WIDE PASSAGE



Whala
RESIDENCY



SPECIFICATION

Structure : Wall designed earthquake resistant RCC frame structure using superior quality material as per structural design.

Doors : Elegant entrance door & internal flush door.

Windows : Aluminum section window.

Flooring : Vitrified flooring in all rooms.

Kitchen : Marble platform with S.S. Sink & wall tiles up-to lintel level.

Toilets : Designer toilets with premium quality bathroom fittings, sanitary ware & glazed tiles up-to lintel level.

Plumbing : Concealed plumbing with ISI fitting.

Electrification : Concealed copper wiring with ISI switches. MCB provision in main distribution board. AC Point in bed rooms.

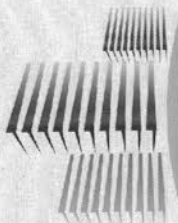
Paint : Internal wall finishes with distemper & external wall finishes with weather proof paint.



AMENITIES

- Elegant entrance gate with security cabin
- CCTV Camera in Parking Area
- Feel fresh air surrounding all towers
- Internal parking with paved block, street light
- Corporation water connection/boaring water
- Underground and overhead tanks for 24 hours water supply
- Anti termite treatment
- Lavish garden area
- Open terrace finishing & water proof
- R.O. System
- Standard quality lift for each tower

A project by



PBG ASSOCIATES

“VHALA RESIDENCY”

Gorwa-Bajwa 24 Mt. Main road,
Opp. Somnath Mahadev Mandir,
Karodiya, Vadodara.

Booking Contact :-

98240 88073

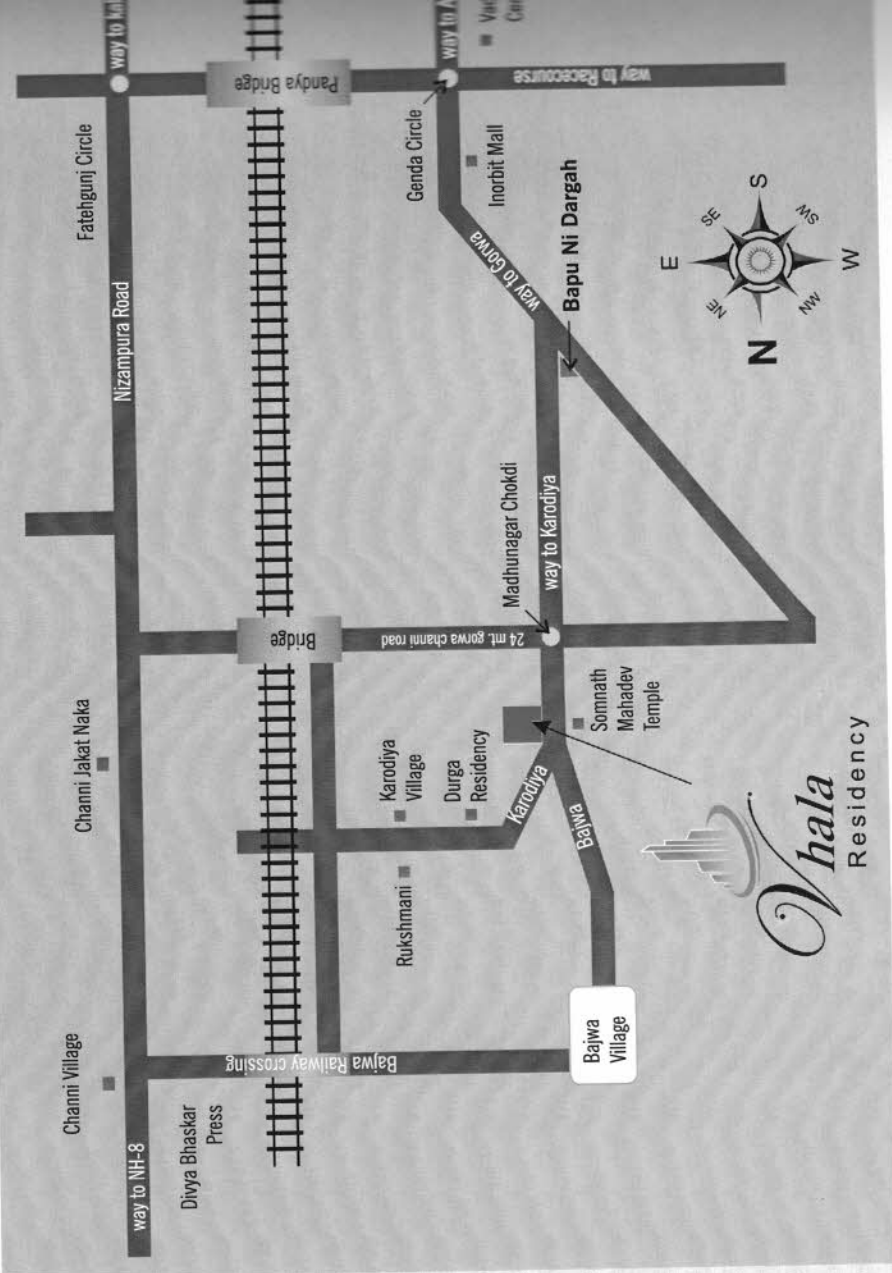
98250 18616, 99095 03485

Architech By : Vaibhav Architech

Structure Design By : Nitin Sidhpura & Associate

Mode of Payment

25% Booking Stage | 15% Plinth Level | 25% Slab Level | 15% Plaster Level | 15% Flooring Level | 5% Finishing



Note : Document Charges, stamp duty, all municipal taxes charges, service tax, MGVCCL meter deposit should be levied separate. Each member needs to pay maintenance deposits separately. • Any new central or state government taxes, if applicable shall have to be paid by the clients. • In case of booking cancellation amount will be refunded from the booking of same premise, after deduction of Rs. 25,000/- as administrative charges. • Possession will be given after one month of settlement of all accounts. • Extra work as the client's requirement will be done at extra cost. • In case of delay of water supply, light connection, drainage work by VMSS / MGVCCL, developers will not be responsible. • The developers reserve the full right to make any change. • Terrace right will be born by developers. • This brochure does not form a part of agreement or any legal document. It is for easy display of the project.