

Registered User



Building a better world
As ISO 9001:2008, 14001:2004
OHSAS 18001 Certified Company

Vicenza Highdeck
Site address :
B/s Vicenza Highbreeze, Opp. C.M.Patel Farm,
Kalali Talsat Link Road, Kalali, Vadodara-390012

A Project by:
Pawan Enterprise
Email : highdeck@pawangroup.com
URL : <http://www.pawangroup.com>

Contact : 9227472862 / 57



VICENZA
HIGHDECK
SPLENDID 3 BHK APARTMENTS

Title last page

Title

VICENZA
HIGHDECK

A beautiful part of your life.

A residential extravaganza true to its name, Vicenza Highdeck is an address that elevates the altitude of opulence to the next level. Rising high and designed to perfection, these classified homes are the privileged few.

splendid 3 BHK apartments



A beautiful part of your life.

A feeling of exaltation comes naturally to you the moment you view it.
Exquisite design coupled with innovative ideas shall raise your living to new highs.

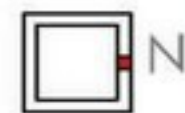


A view from the front is like soaring to the skies with a bagful of dreams and ambitions.





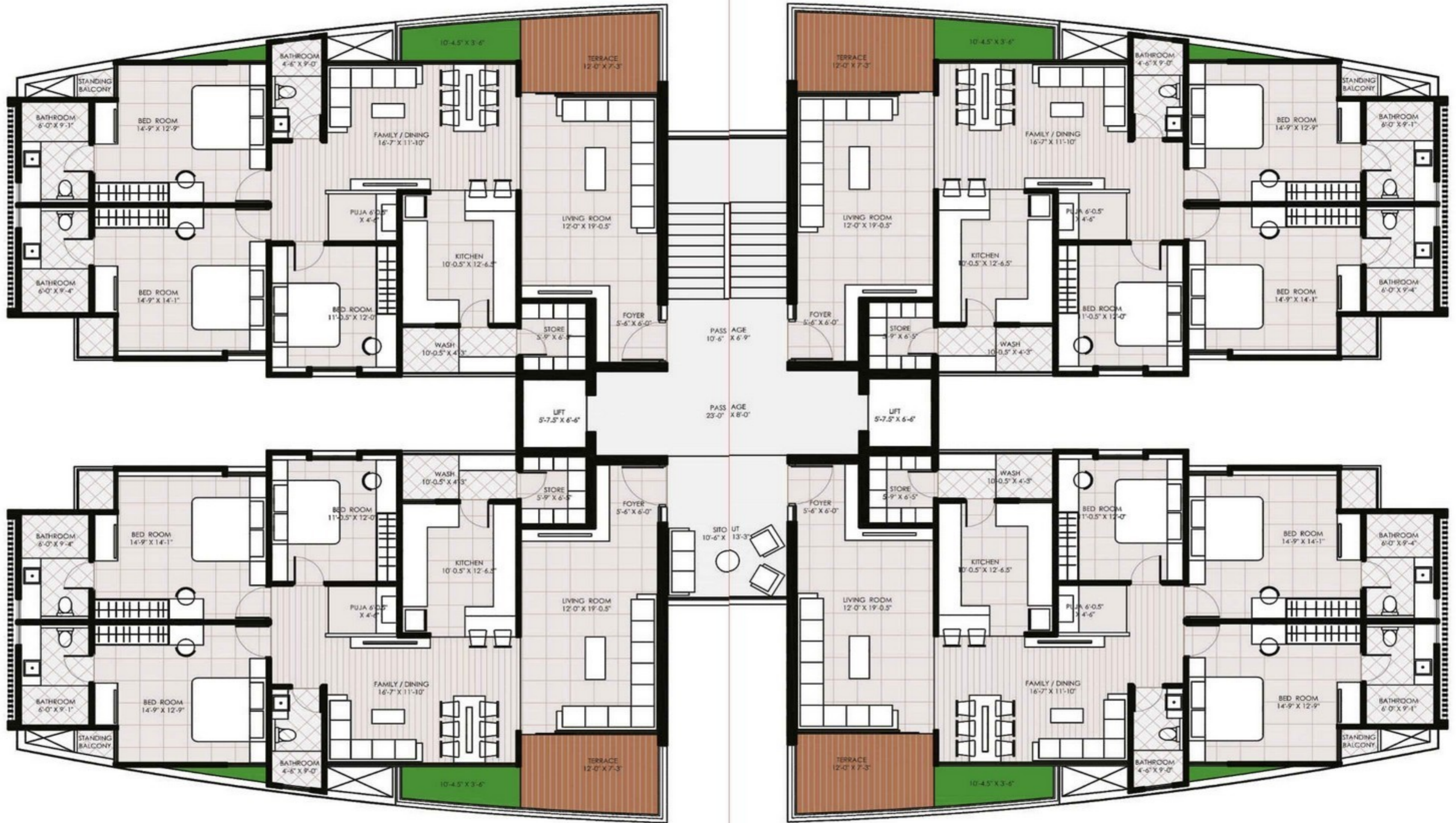
TOWER Gardenia
 TYPICAL APARTMENT
 VICENZA HIGH DECK





TOWER Bluebell
 TYPICAL APARTMENT
 VICENZA HIGH DECK





TOWER Mullberry
 TYPICAL APARTMENT
 VICENZA HIGH DECK





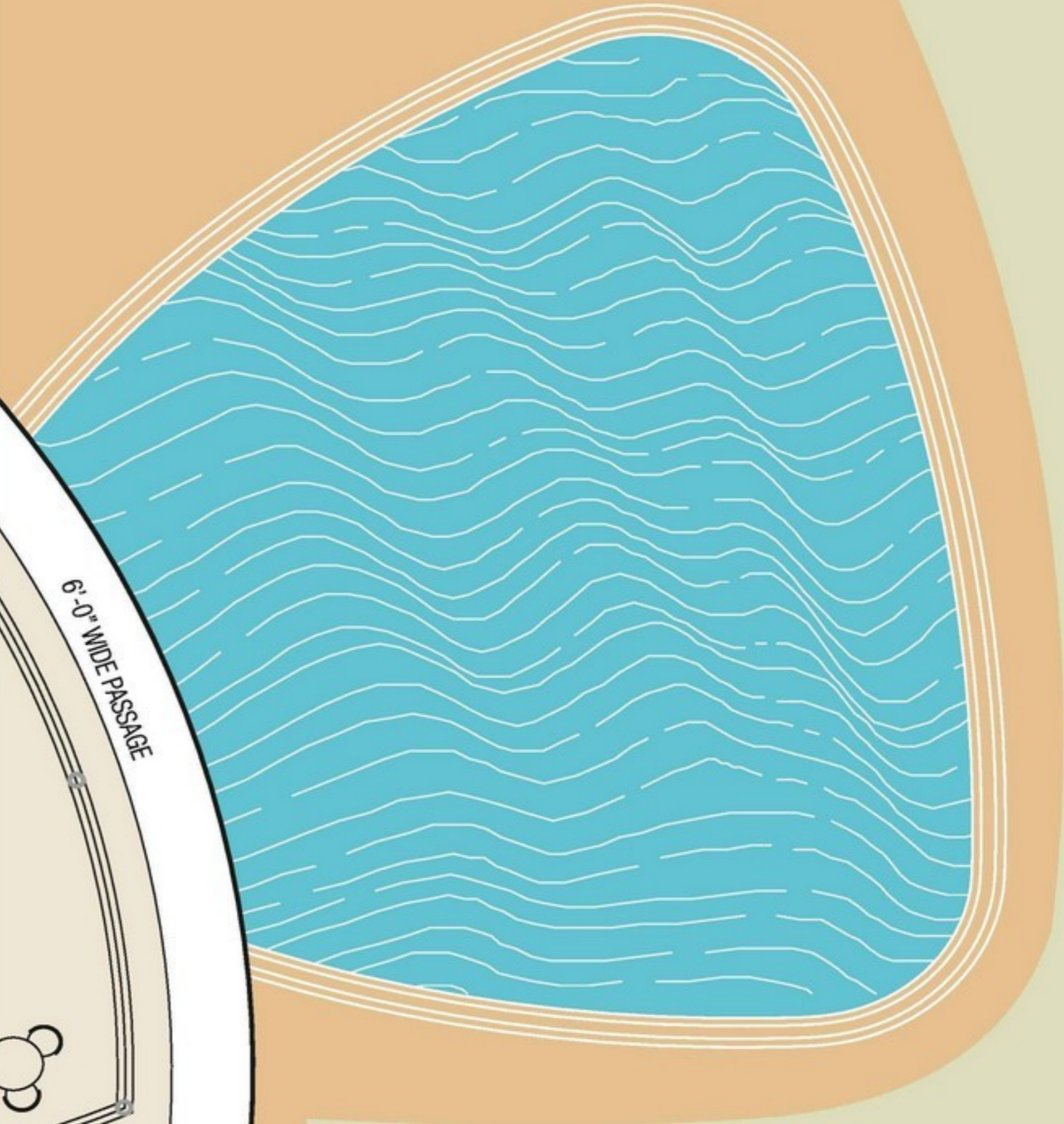
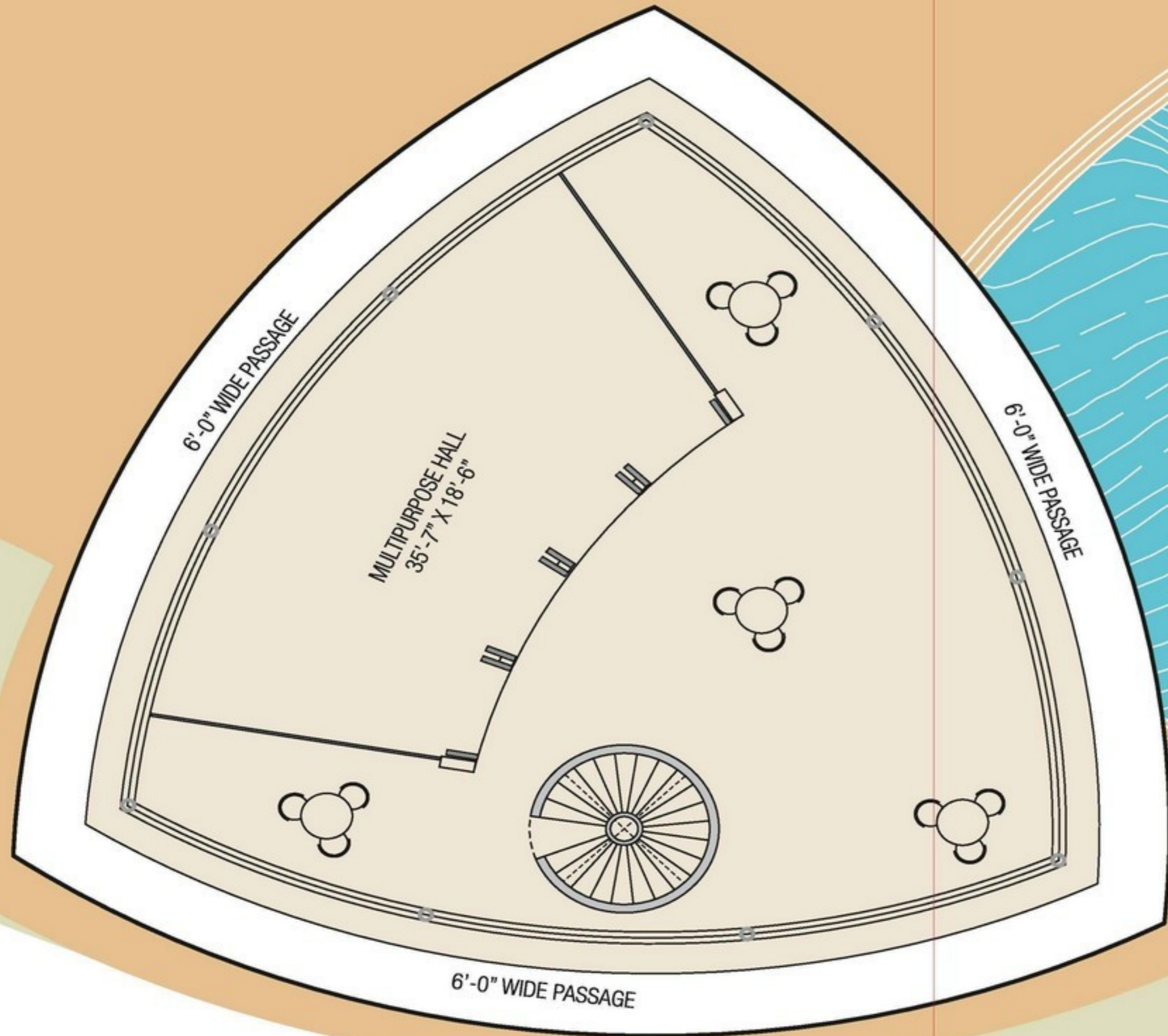
Over all layout



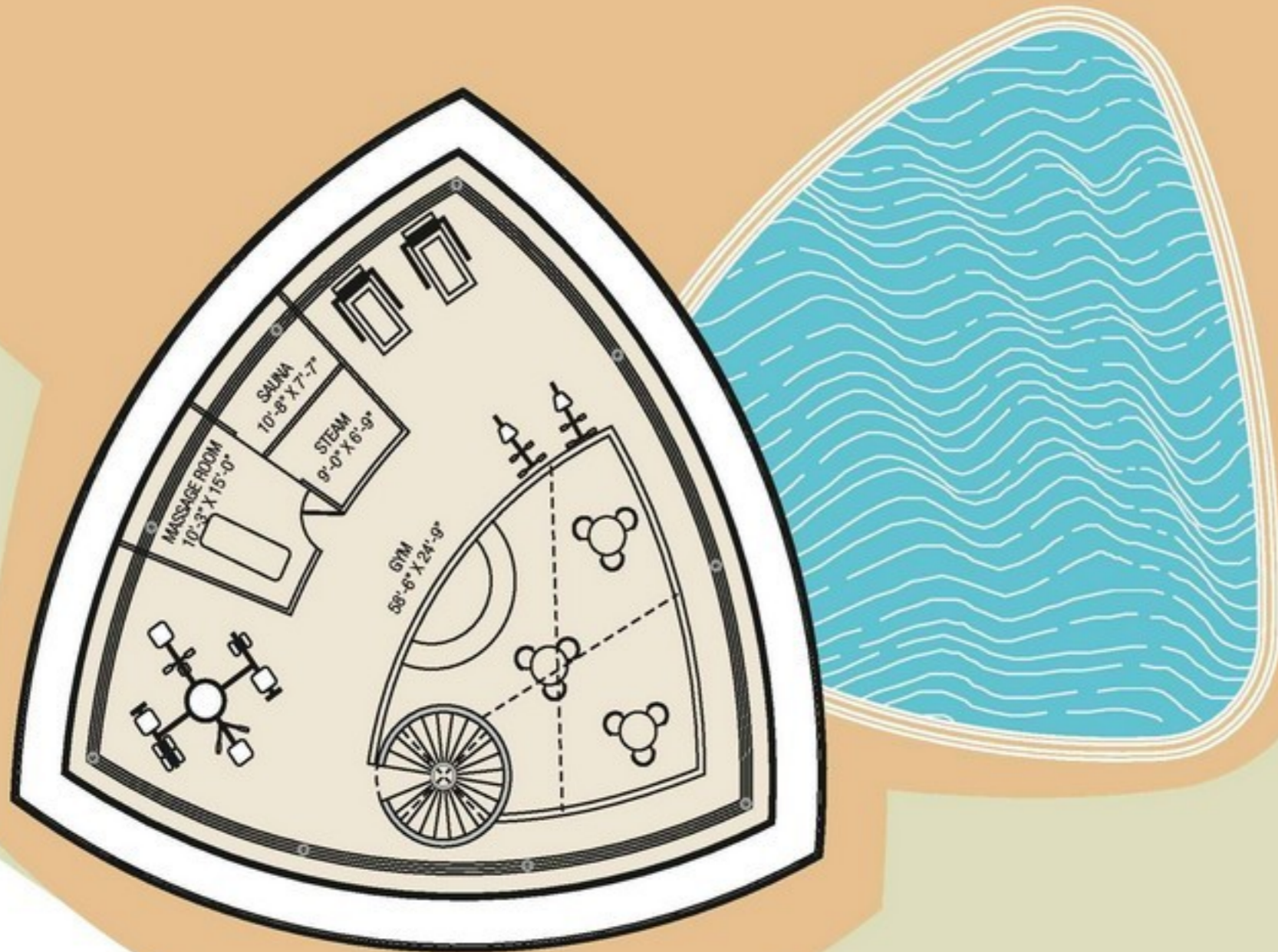
A grandeur of greens gives a deep sense of vibrancy and tranquillity.



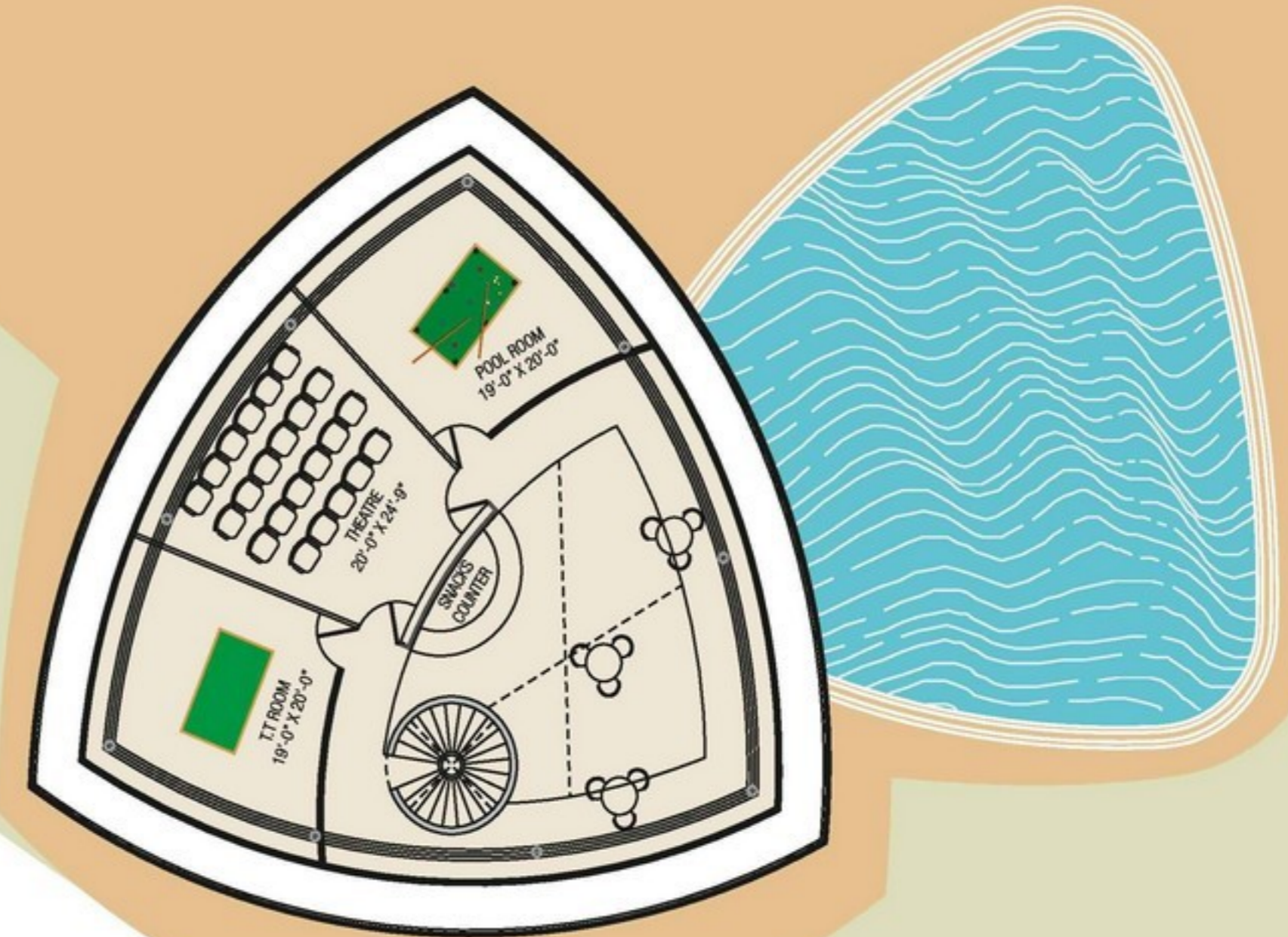
Club House - Ground Floor



Club House - Mezzanine Floor



Club House - First Floor





Towering Above The Bustling City
The twilight holds in it the mood of lustre
which beckons you warmly.

Highdeck Specification

- ◆ **Structure :**
Reinforced structure as per the structure engineers design
- ◆ **Elevators :**
Two automatic elevators having a capacity for 6 people, with power back-up
- ◆ **Floors :**
Stairs : Stone treads
Apartment floor : Vitrified tiles of reputed make
Bathrooms and Balconies : Anti skid vitrified tiles of reputed make
G F Foyer : Restic finish stone floor
Individual floor lobbies : Anti-skid vitrified tiles of a reputed make
- ◆ **Kitchen :**
Granite counter finished sink, Tiling (on walls) on the platform side till lintel level
- ◆ **Bathrooms / Toilets :**
Wall tiling till lintel level, C.P fittings and vessels of a reputed make
- ◆ **Doors And Windows :**
Laminated flush doors. Aluminum powder coated windows
- ◆ **Colour Finish :**
External faces with Apex paints and putty on all internal wall
- ◆ **Electricals :**
Concealed wiring of a standard make with modular switches
- ◆ **Water Supply :**
24 hours supply

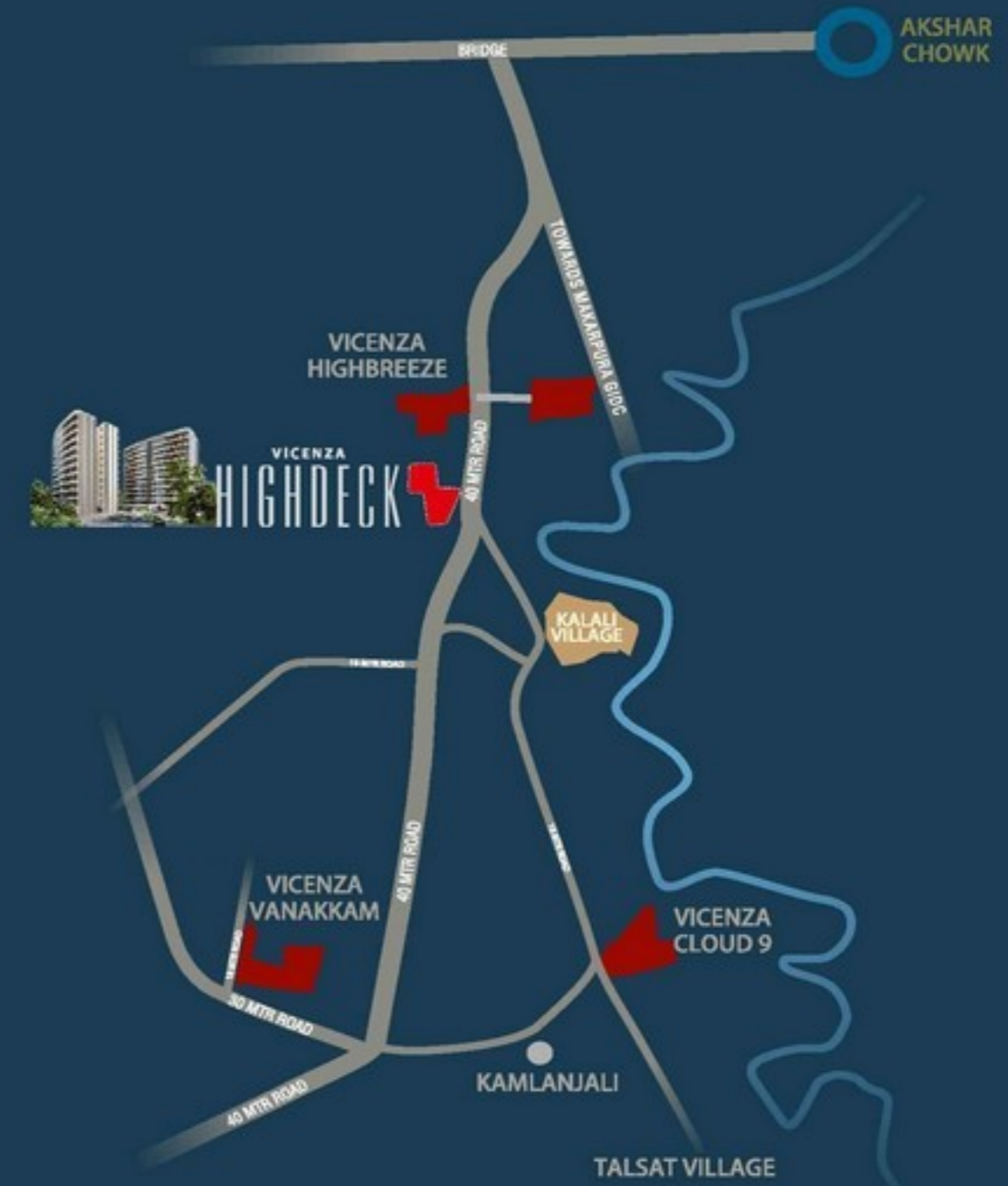
Highdeck Highlights / Amenities

Highlights

- ◆ Mini theater facility with multipurpose hall with screen
- ◆ Lighted tennis court
- ◆ Video door phone

Amenities for Club House:

- ◆ Pool
- ◆ Multipurpose Hall
- ◆ Table Tennis Room
- ◆ Pool Room
- ◆ Gymnasium
- ◆ Multipurpose Court



Architect - Uneven - www.uneven.in

Structural Consultant - A A Desai & Associates

Plumbing & Electrical Consultant - Archtech Engineers

Special Notes :

The developers reserve the rights to change or revise or make any modifications, additions, omissions or alterations in the scheme as a whole or any part there of or any details therein, at their sole discretion without any prior notice.

Such changes would be binding to all the members.

All the architectural and interior views in brochure are computer graphic simulated interpret petition of the actual property.

All the dimensions given are approximate & from unfinished surfaces.

This brochure is just for an easy presentation of the project and should not be treated as a legal document.