



JV PARTNER



Aastha
Realinfo Private Limited



SITE ADDRESS

Bil - Chapad Road, Nr. Bil Village,
Off. O.P. Road, Vadodara - 391410.
Contact - +91 9978990338, +91 9687641719

CORPORATE HEADQUARTERS

Pacifica House, 4/5, Sigma- I,
B/h Rajpath Club, Near Mann Party Plot,
Bodakdev, Ahmedabad - 380 059
Ph: 9825041966 / 9898095732, Fax : 079-40027786

SMS : PACIFICA to 54242 • www.pacificacompanies.co.in • info@pacificacompanies.com

Ahmedabad - Vadodara - Deesa - Chennai - Hyderabad - Bengaluru - NCR

Residential | Senior Living | Townships | Hotels | IT Parks | Business Parks | Commercial | Plotted Development

A woman with dark hair, wearing a white long-sleeved top and a dark skirt, is reclining in a black wicker chair. She has her eyes closed and a peaceful expression, with her right arm raised and hand resting on the chair's backrest. The chair is situated on a wooden deck. In the background, there is a blurred view of a building with a red door and lush green foliage. A semi-transparent grey banner with white text is overlaid on the upper portion of the image.

LAVISH LIVING... at an exotic



TRUST, QUALITY & ETHIC

PACIFICA[®]
COMPANIES
Shaping real estate globally... since 1978

100

100

100

100

100

100

100

100

100

100

100

100

100

100

100

100

100

100





PACIFICA US

The beginning of Pacifica's journey of success took place in the United States of America way back in 1978. Since then, they have successfully developed and diversified their assets including hospitality, senior housing, multi-family, commercial development, land acquisition, residential development, debt acquisition and REO across 22 states in the US.

This diversity of experience has allowed Pacifica to confidently extend itself in any market or property type with its proven track record generating superior returns in all asset classes.

PACIFICA LATIN AMERICA

The Latin American real estate space, as a result of steady economic and demographic growth, offers a multitude of opportunities for those with a keen eye. Recognizing this, Pacifica is currently working to strongly position itself with an initial investment of \$400 million in a diverse range of asset classes.

Their first landmark in the region was The Calette Mall in Tijuana, Mexico, a mixed-use project, which we believe will become the most important type of development in the future.

100

100

100

100

100

100

100

100

100

100

100

100

100

100

100

100

100

100

LIFE BEYOND EXQUISITENESS... Welcome





DREAM... of a place close to city.

A space to unwind amidst the



The first part of the document discusses the importance of maintaining accurate records of all transactions. It emphasizes that every entry, no matter how small, should be recorded to ensure the integrity of the financial statements. This includes not only sales and purchases but also expenses, income, and transfers between accounts.

Next, the document outlines the process of reconciling bank statements with the company's records. This involves comparing the bank's record of transactions with the company's ledger to identify any discrepancies. Common reasons for discrepancies include timing differences, such as deposits in transit or outstanding checks, as well as errors in recording or bank charges.

The document then provides a detailed explanation of the accounting cycle, which consists of eight steps: 1) identifying and recording transactions, 2) journalizing, 3) posting to the ledger, 4) determining account balances, 5) preparing a trial balance, 6) adjusting entries, 7) preparing financial statements, and 8) closing the books. Each step is described in detail, including the necessary journal entries and ledger postings.

Finally, the document discusses the preparation of financial statements, including the balance sheet, income statement, and statement of cash flows. It explains how these statements are derived from the accounting records and how they provide a comprehensive view of the company's financial performance and position.



GROUND FLOOR PLAN





FIRST FLOOR PLAN





GROUND FLOOR PLAN





FIRST FLOOR PLAN





GROUND FLOOR PLAN





FIRST FLOOR PLAN





GROUND FLOOR PLAN





FIRST FLOOR PLAN





GROUND FLOOR PLAN





FIRST FLOOR PLAN





GROUND FLOOR PLAN





FIRST FLOOR PLAN





GROUND FLOOR PLAN





FIRST FLOOR PLAN





SECOND FLOOR PLAN





GROUND FLOOR PLAN





FIRST FLOOR PLAN



The first part of the document discusses the importance of maintaining accurate records of all transactions. It emphasizes that every entry, no matter how small, should be recorded to ensure the integrity of the financial statements. This includes not only sales and purchases but also expenses, income, and transfers between accounts.

Next, the document outlines the process of reconciling bank statements with the company's records. This involves comparing the bank's record of transactions with the company's ledger to identify any discrepancies. Common reasons for discrepancies include timing differences, such as deposits in transit or outstanding checks, and errors in recording or transcription.

The document then provides a detailed explanation of the accounting cycle, which consists of eight steps: 1) identifying and recording transactions, 2) journalizing, 3) posting to the ledger, 4) calculating the trial balance, 5) adjusting entries, 6) preparing financial statements, 7) closing the books, and 8) reversing entries. Each step is described in detail, including the necessary journal entries and ledger postings.

Finally, the document discusses the importance of internal controls to prevent fraud and errors. It suggests implementing a system of checks and balances, such as requiring two people to authorize transactions, separating duties, and conducting regular audits. The document also provides a checklist of internal control procedures for small businesses.

PURE CLUBBING!





REPOSE... in the steady flow of

CLUB. INDULGE. REPEAT.



100

100

100

100

100

100

100

100

100

100

100

100

100

100

100

100

100

100



YOUR HEALTH... is our we



MOMENTS... when you need to be with you



LET US... make your life more l

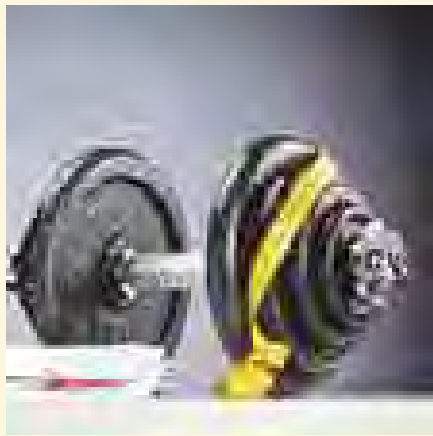
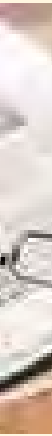




COME, RELAX in our world. Make

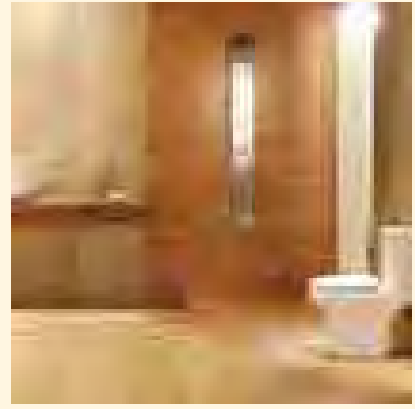
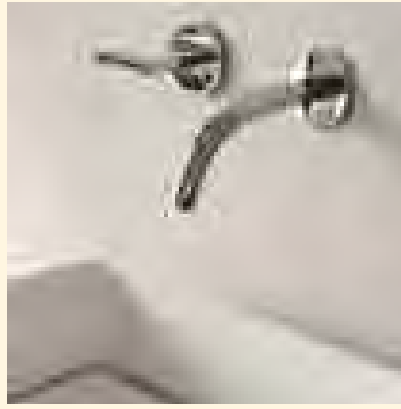
BEAUTIFY YOUR SENSE





AMENITIES WITHIN CLUB C

SPECIFICATIONS



STRUCTURE

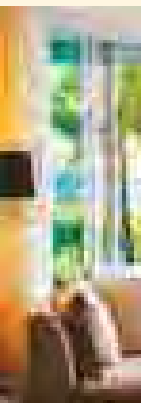
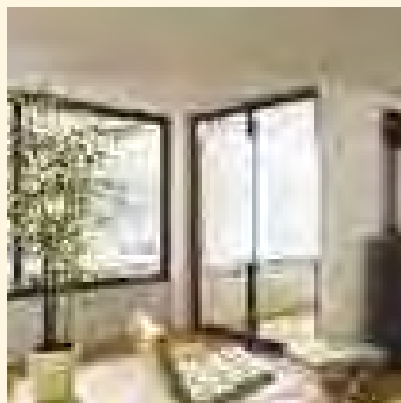
Composite RCC framed and load bearing wall structure
230 mm brick masonry for Exterior walls, some interior walls & Double Coat Plaster
115 mm brick masonry for some Interior & Single Coat Plaster

OPENINGS

Main door Miranti frame or Equivalent with both side Veneer finish Flush doors
Bed room door - Miranti frame or Equivalent with enamel paint Flush doors
Toilet door - Miranti frame or Equivalent with enamel paint Flush doors
Balcony - French door UPVC sliding Doors
Windows - UPVC sliding Windows
Ventilations - UPVC frame with louvers & exhaust provision

FLOORING & OTHER FINISHES

Living & Dinning - Vitrified tiles (600mm X 600mm)	2. Wall - Vitrified tiles
M. Bed room - Vitrified tiles (600mm X 600mm)	3. Sink - Granite
Bed rooms - Vitrified tiles (600mm X 600mm)	Balcony & Terrace - Tiles
Kitchen - Vitrified tiles (600mm X 600mm)	Toilet Floor - Tiles
1. Platform Granite - Black Galaxy	Toilet door - Miranti frame



LOCATION

