



3 | 4 BHK SPACIOUS FLATS



AN ABODE OF DISTINCTION IS A **PRIDE FOREVER**

Homes at Vedant Eminent are a class apart. Elegant 3 & 4 BHK apartments in spacious layouts to accommodate your dreams. Premium fixtures with flawless finishing for a life of pure luxury. Truly exceptional, your homes will fill your hearts with pride.





A LIFE OF LUXURY IS A PLEASURE FOREVER

Life at Vedant Eminent is designed for sophistication. Thoughtfully crafted for premium lifestyle, the campus exudes refinement. It has just the right mix of leisure spaces and smart value additions, to make everyday living an eternal delight. This is where life will enwrap you in pleasure.





TYPICAL FLOOR PLAN



GRAND ENTRANCE LOBBY

- Decorative Entrance Foyer
- Guest Waiting Area

ENERGY SAVING SOLUTIONS

- Rain water harvesting
- Level controllers in water tanks to avoid wastage

SAFETY FEATURES

- Video Door Phone Security
- Closed Circuit Television (CCTV) System with Surveillance Cameras at Strategic Locations in Common Areas
- Gated community with round the clock security

SALIENT FEATURES

- 8 Passengers Automatic MRL elevator for each building
- Generator for Power Backup (for common amenities)
- Common water supply & Drainage of corporation

9.00 METER WIDE ROAD

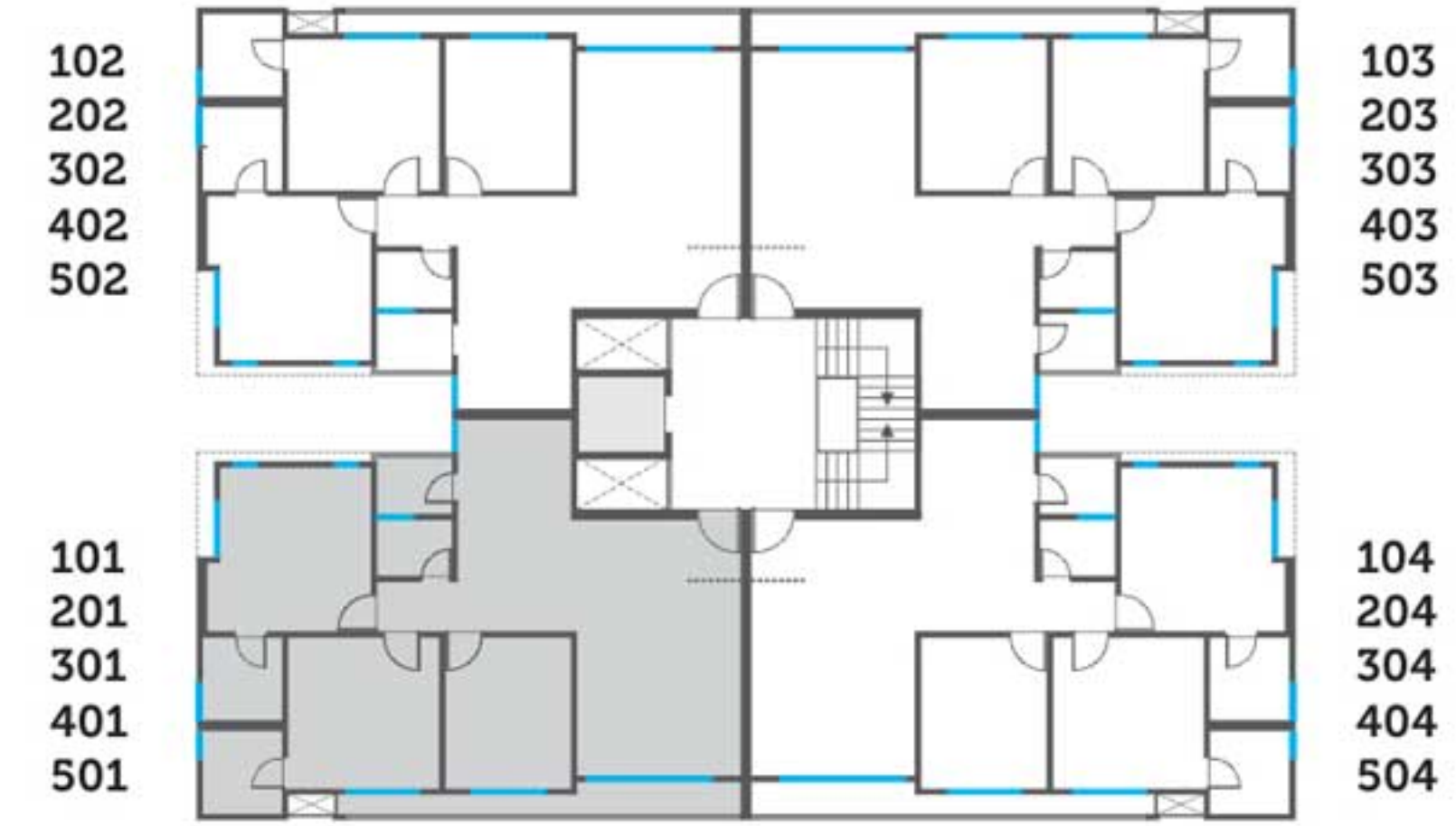
9.00 METER WIDE ROAD

3 BHK TOWER B

1st to 5th Typical Floor

Carpet Area:
92.48 Sq.mtrs. (995.00 Sq.ft.)

Built-up Area:
101.10 Sq.mtrs. (1088.00 Sq.ft.)



4 BHK TOWER A

1st to 4th Typical Floor

Carpet Area:
149.75 Sq.mtrs. (1611.00 Sq.ft.)

Built-up Area:
171.20 Sq.mtrs. (1843.00 Sq.ft.)



4 BHK TOWER A

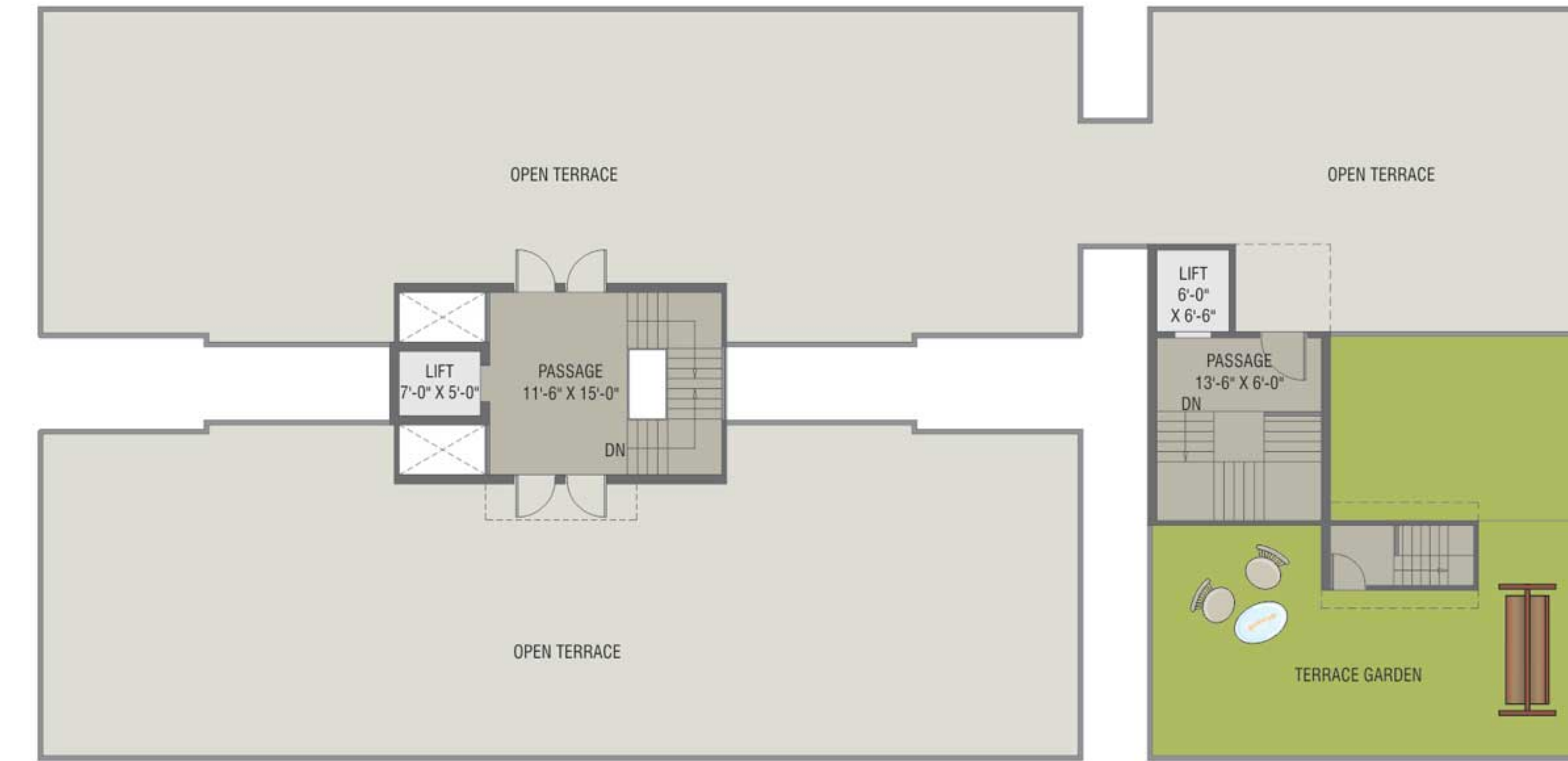
5th Floor Plan with Terrace

Carpet Area:
149.75 Sq.mtrs. (1611.00 Sq.ft.)
Terrace Area: 76.19 Sq.mtrs. (820.00 Sq.ft.)

Built-up Area:
171.20 Sq.mtrs. (1843.00 Sq.ft.)
St. Cabin: 9.77 Sq.mtrs. (105.00 Sq.ft.)



TERRACE FLOOR PLAN



GROUND FLOOR PLAN





Note: The Developers reserve all the rights to make amendments in plan & specification.
This brochure does not form a part of agreement or any legal document, it is for information purpose only.

A PLACE OF EMINENCE IS A JOY FOREVER!

Imagine life in a place of prominence, where all roads lead home!

Set near the bustling Productivity Road, Vedant Eminent is at the centre of pretty much everything. Premium residences at a spectacular location buzzing with activity and conveniences, all around the corner. The pristine green surroundings of Akota at an arm's length. A fine lifestyle, in the heart of the city.

SPECIFICATIONS

STRUCTURE:

Well designed RCC frame structure as per structural engineer's design.

FLOORING:

Vitrified flooring in living, dining, kitchen and all bedrooms.

KITCHEN:

Granite platform with SS sink and tiles up to lintel level. Ceramic tiles dado and kota stone / anti-skid flooring for wash area.

BATHROOMS:

Designer wall tiles and anti-skid ceramic tiles flooring. Plumbing with standard fittings & vessels.

PLUMBING:

Systematic wall concealed CPVC/UPVC plumbing as per plumbing consultant's design.

DOORS:

Decorative main door with standard safety lock and fittings. All other internal doors are laminated flush doors.

WINDOWS:

Anodised Aluminium section windows and ventilation.

ELECTRIFICATION:

Concealed copper ISI wiring, MCB/ ELCB & branded modular switches with electrical points in all area as per drawings.

AIR-CONDITIONING:

AC Copper Piping and wiring include drains in all bedrooms & living room.

FINISHING:

Cement based putty finished interior walls and anti fungal weather coat paints on exterior walls.

A PROJECT BY:



VEDANT
GROUP

we shape your dreams

Developers: SHREENATH ASSOCIATES

Site: "VEDANT EMINENT", 1 & 92, Urmi Society, Off Productivity Road,
Opp. Aadi Vista, B/h. Axis Bank, Akota, Vadodara. 390 020.

Ph.: +91 95861 33007, 98250 28476, 98246 66003

E-mail: Vedanteminent@gmail.com

Architect: Foram Architects & Engineers **Structural Consultant:** Associated Engineers

Disclaimer: All plans are subject to amendments and approval by the relevant authorities. All photography and computer imagery are artist's impression and are provided for illustrative and indicative purposes only. While every reasonable care has been taken in providing this information, the developers cannot be held responsible for any inaccuracy. Subject to Vadodara Jurisdiction.