

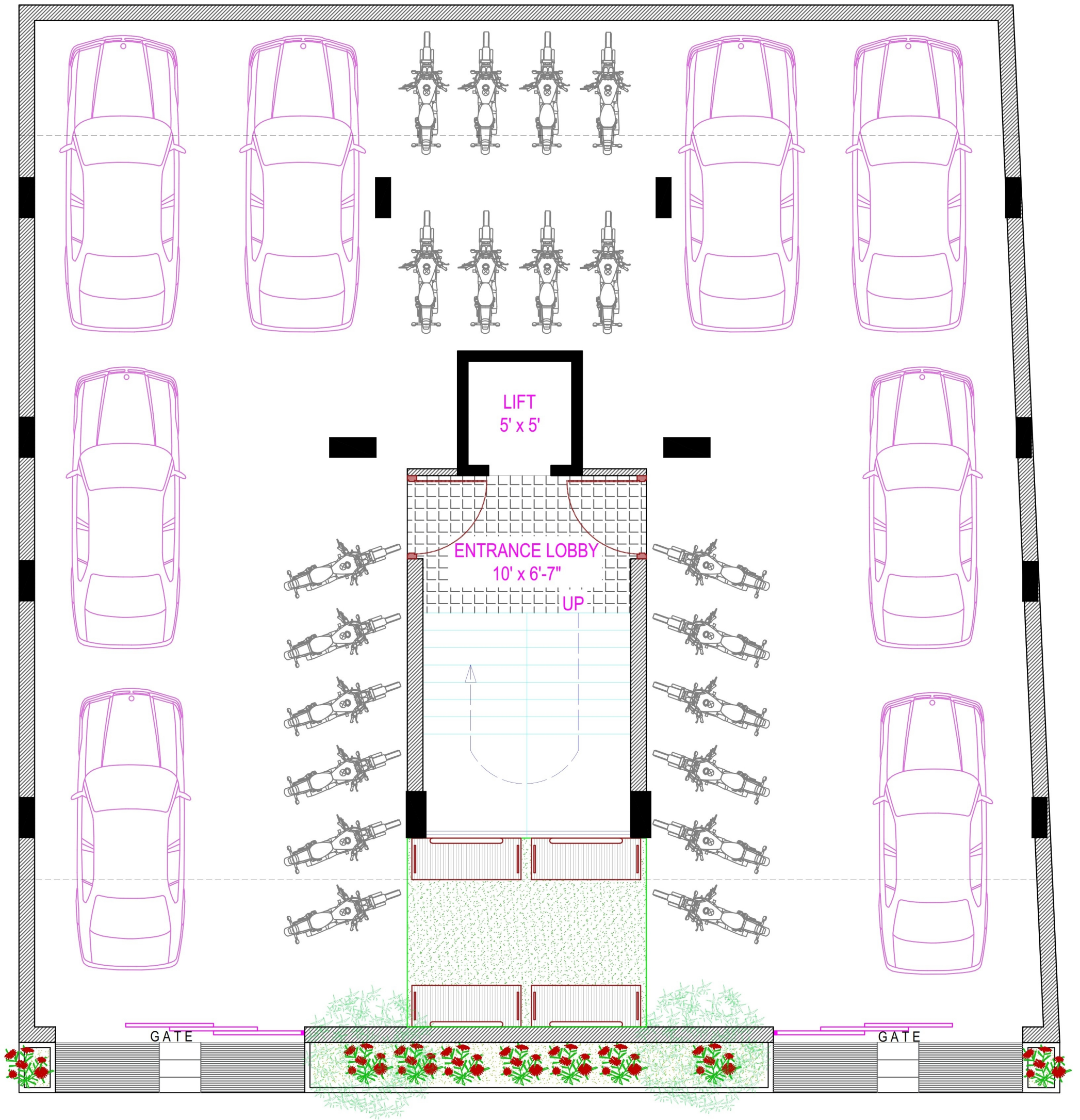
# SANIDHYA – 2 ,APPARMENT , AT – MORBI ROAD











12.00 MT. WIDE ROAD

# PARKING LAYOUT



### Specifications :

- Flooring : Vitrified Tiles Of Standard Company
- Kitchen : Granite Platform, S. S. Sink - Wall Tiles Till Slab Level
- Bathroom / Toilet : Designer Concept Wall Tiles Till Slab Level
- Doors & Windows : Decorative Laminated Main Door And Flush Door, Powder Coating Aluminum Section Windows
- Color : Attractive Acrylic Paint and Internal with Putty Primar
- Lift : Lift of Standard Company
- Water Storage : Underground and Over Hade Water Tank with Automatic Water Level Controller
- Plumbing : Counseled Plumbing Fitting of Standard Company
- Water Electrification : Modular Switch of Standard Company
- Solar : Standard Company
- CCTV Camera, Security Room, Children Play Ground in Parking



### Features :

- Attractive Elevation
- Earthquake Resistant, RCC Frame Structure Building
- Fully Parking Space



### Notes :

- 1) Stamp Duty, Registration Charges, Legal Charges, Service Tax, GST, GEB, RMC Charges & Ele. Co. Charges including Cable & Sub-Station Cost Etc. Shall Be Borne by the Purchaser.
- 2) Any Additional Charges of Duties Levied by the Government / Local Authorities During of After the Completion of the Project will be borne by the Purchaser.
- 3) In the Interest of Continual Developments in Design & Quality of Construction, The Developer Reserve All Rights to Make Any Changes in the Project Including Technical Specifications, Designs, Planning, Layout & All Purchasers Shall Abide By Such Changes.
- 4) The Brochure is Intended Only by Easy Display and Information of the Project and Dose Not form Part of Legal Document.