

J.k. Chowk, University Road, Near Alap Avanie, Rajkot

Contact : Mo. 80002 40494, 94272 71064

3 BHK
PREMIUM FLATS

LOCATION MATTERS MORE...

planet point

3 BHK
PREMIUM FLATS

Happiness • Peace • Prosperity

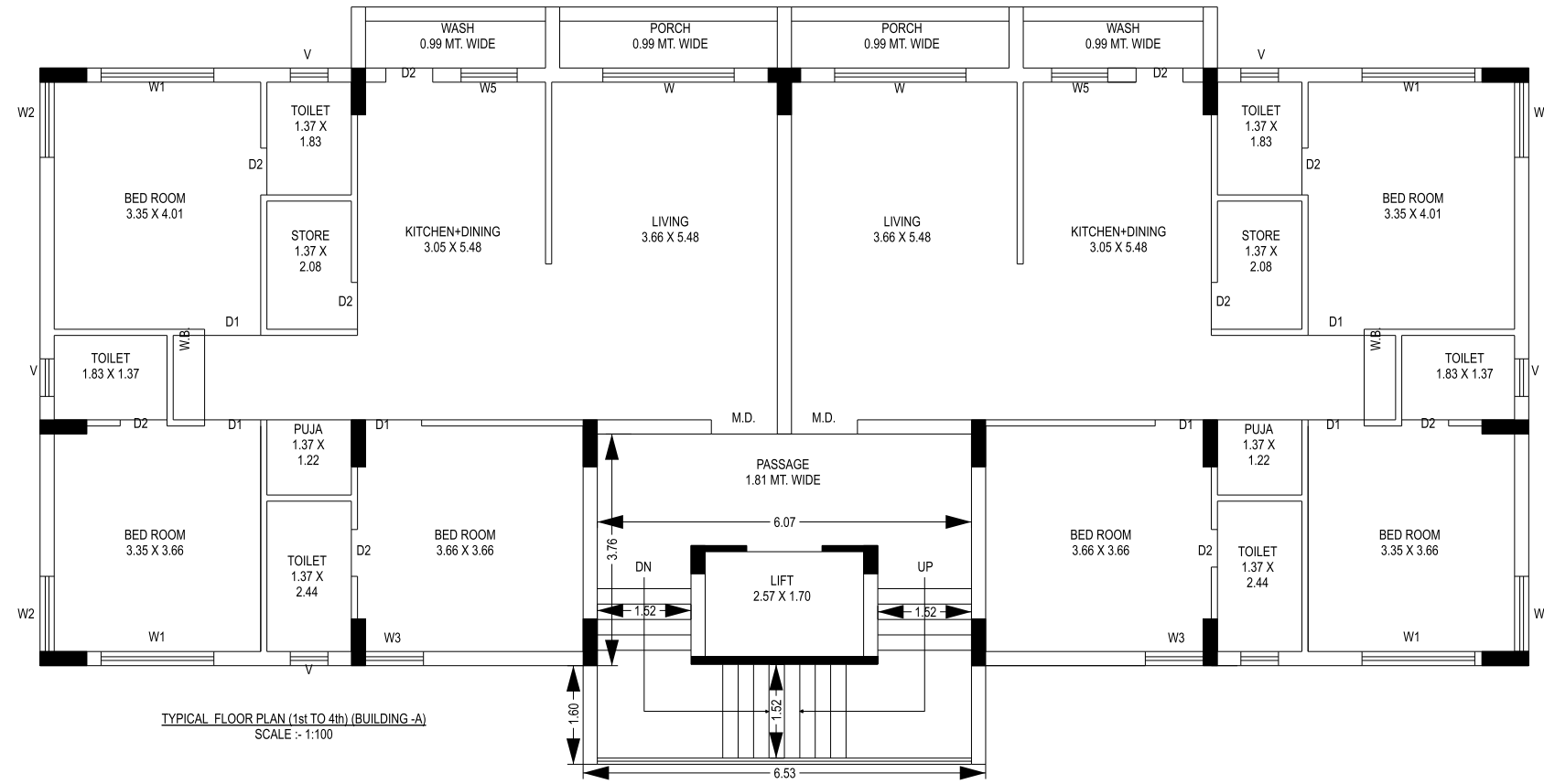
planet point

PLANET
POINT

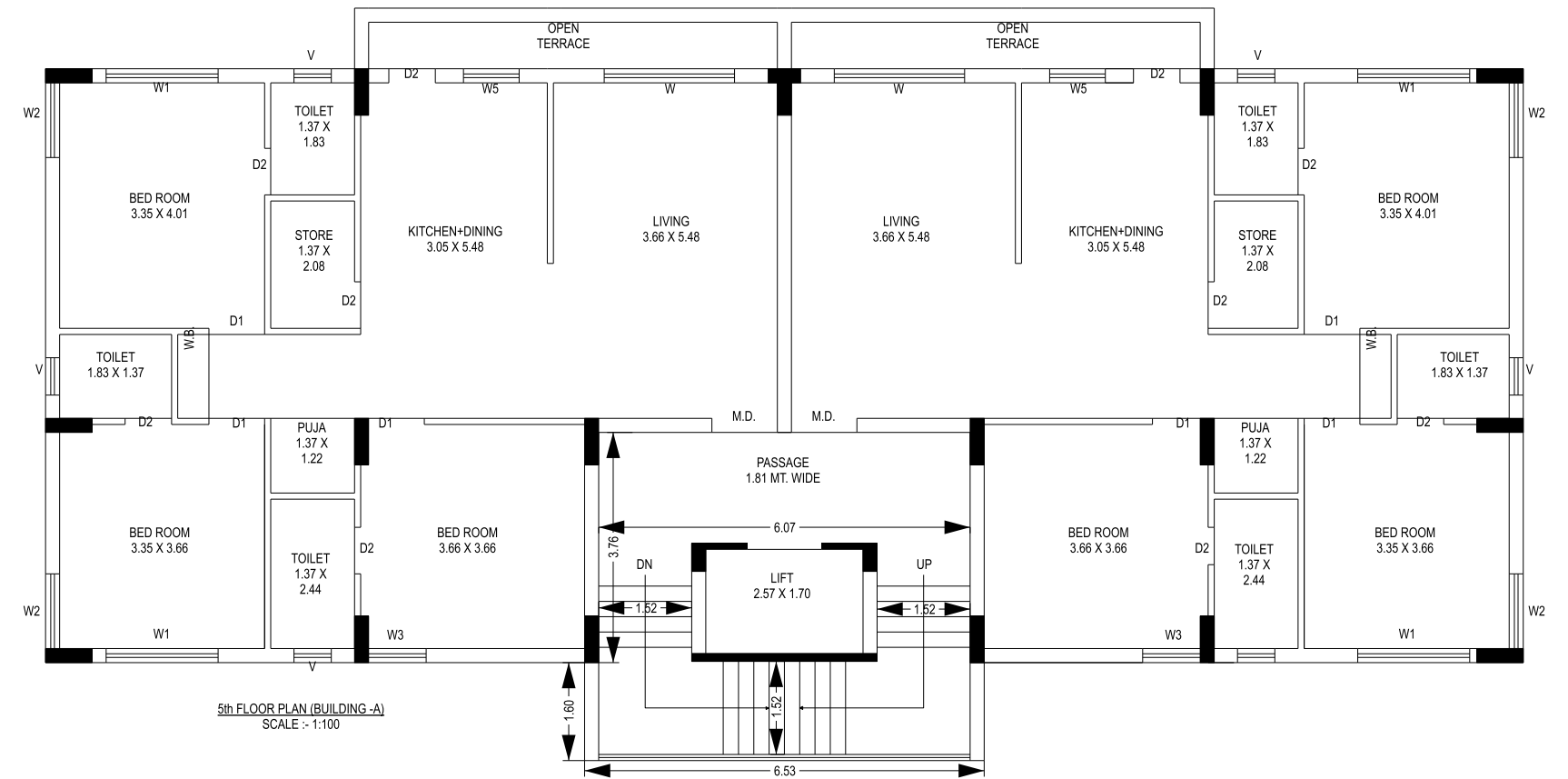




3 BHK
PREMIUM FLATS

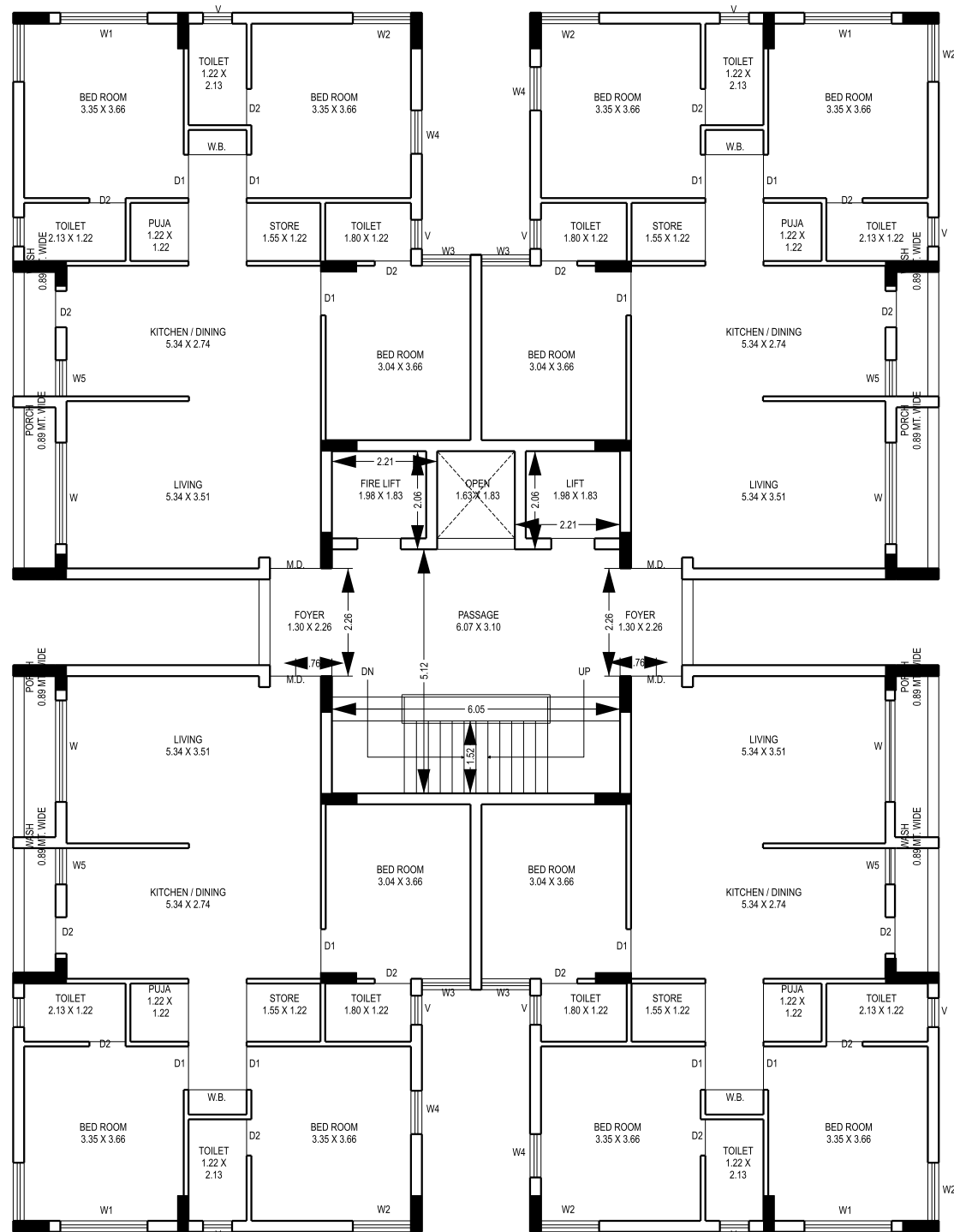


Building A
Floor Plan

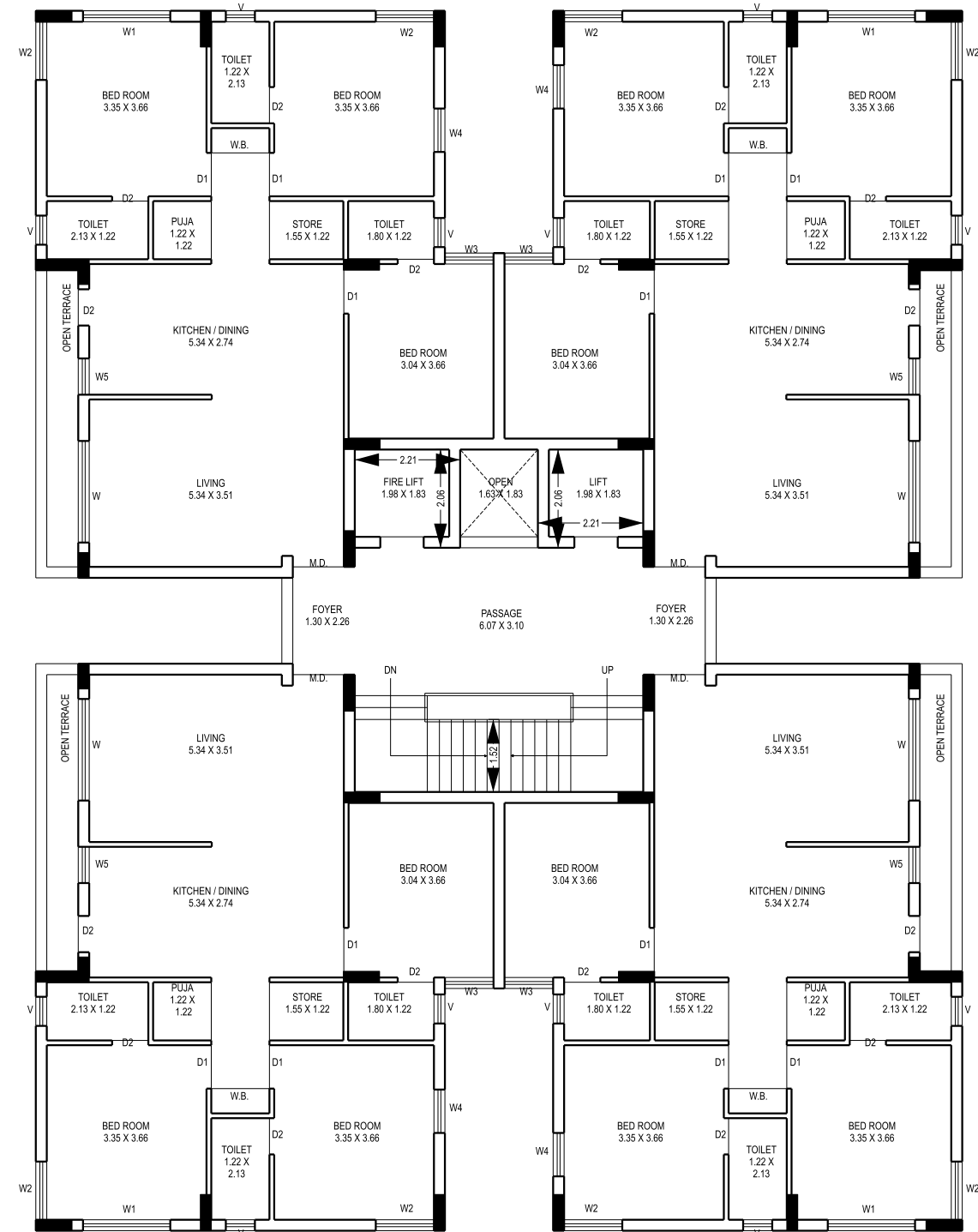




3 BHK
PREMIUM FLATS



TYPICAL FLOOR PLAN (1st TO 6th) (BUILDING-B)
SCALE : 1:100



7th FLOOR PLAN (BUILDING-B)
SCALE : 1:100

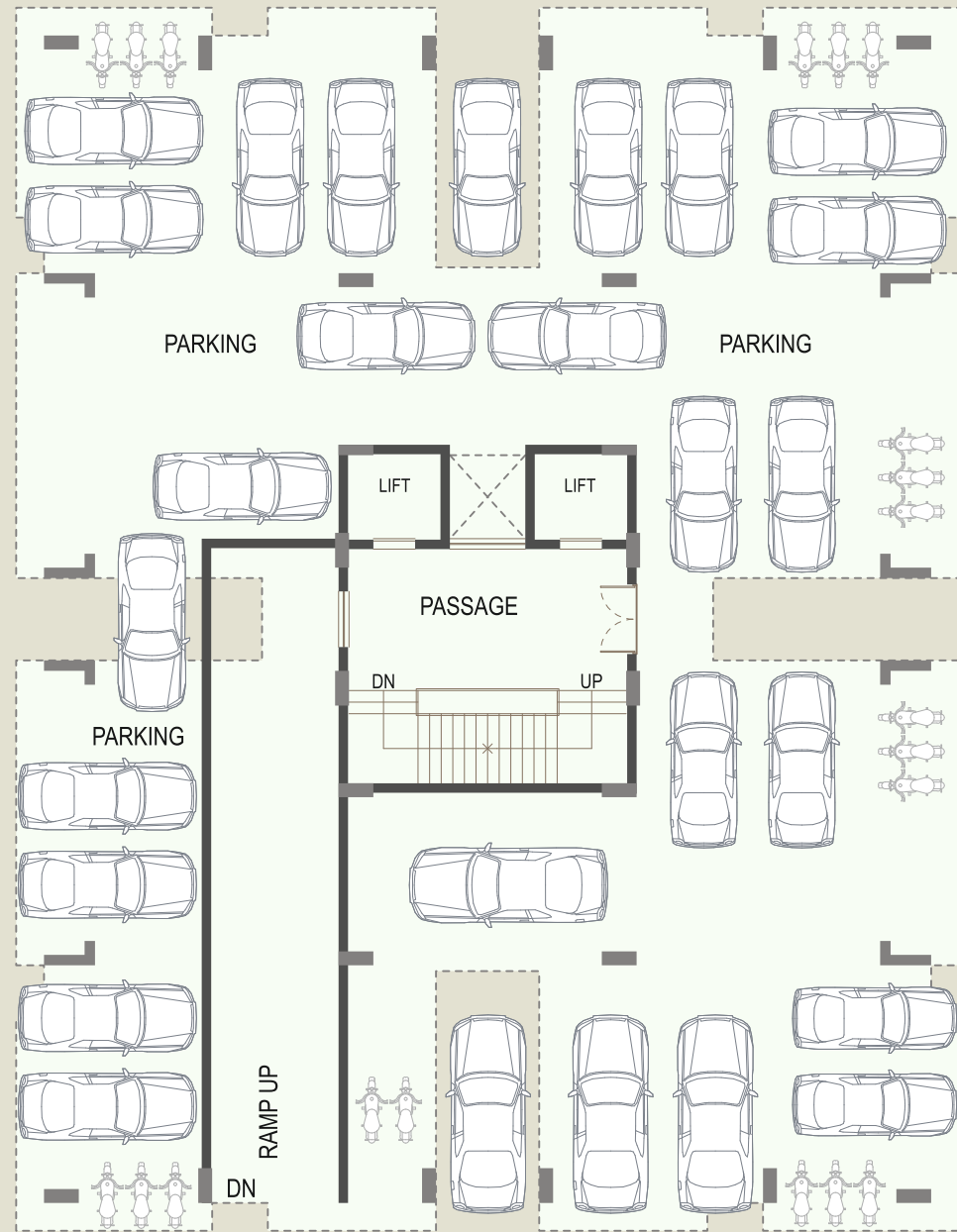
Building B
Floor Plan



3 BHK
PREMIUM FLATS

25 Ft. Wide Road

ENTRY GATE

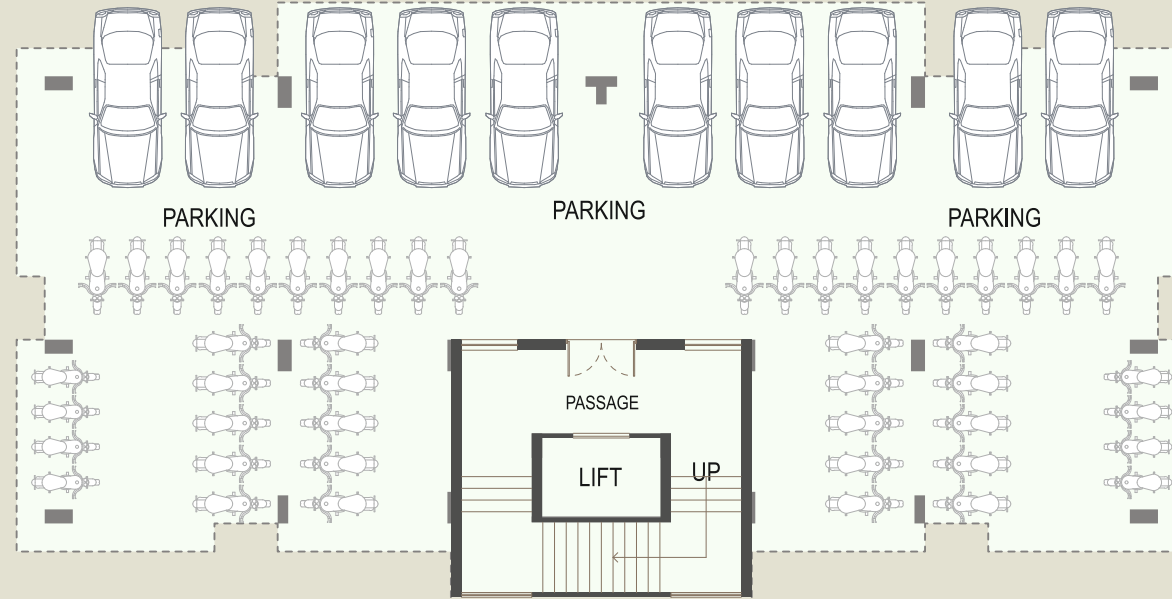


TOWER-B

ENTRY GATE

40 Ft. Wide Road

ENTRY GATE



TOWER-A

Parking Plan

Salient Features

- 5 & 7 storey earth quack resistant apartments.
- 3BHK Flats with attached washroom, Utility and/or storage rooms.
- All flats facing East or West open.
- Ground floor and basement Parking.
- Grand entrance gate with security cabin.
- CCTV surveillance on ground area.
- Generator backup for all common facilities.
- Rain water recharging provision.
- LED lightning in common areas for minimal power consumption.
- Standard quality lifts.

Specifications

- Vitrified tiles in Living, Dining, Kitchen and all Bedroom.
- Glazed tiles up to slab level in all bathroom & Kitchen .
- Standard quality Sanitary wear and CP fittings.
- Granite platform with SS sink in kitchen.
- Standard quality wiring with modular switches and MCB.
- Aluminum section window with child safety grill.
- Laminated main door with lock fittings.
- Rooms & Bathroom flush doors with fittings.
- Sandfaced plaster with acrylic paint for external walls.
- White wall putty finish in internal walls.
- Intercom facility from main gate and reception area.

Disclaimer

- Stamp duty and Registration charges will be charged extra.
- Maintenance deposit would be charged extra.
- Internal and external changes should not be permitted.
- Gas, PGVCL, underground drainage and water connection charges would be extra.



the
perfect
project you have been
waiting for.....

