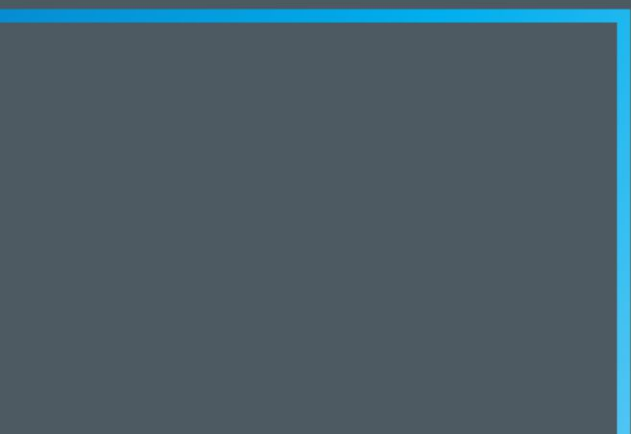


I N S
P I R
I N G
FUTURE



OUR MISSION
OUR VISION

SIMPLY

YOU

**What if you get a dais to implicate your own mission,
track your vision and resurrect your own achievements?**

Stage is all yours with excellent facilities to realize your objectives,
goals and accomplishments.



Affinity Ventures LLP has been initiated by a team of real estate stalwarts who have already emblazoned their reputation on the canvas of real estate in bright colors with its sturdy construction, space optimizing design and innovative ideas. The company envisions to remain ahead of its contemporaries by infusing cutting edge technology, constant improvising and customer-centric approach in all its projects.



THINK

LEAD
CREATE. INSPIRE.



When you have the perfect settings, impeccable amenities and positive vibes to liberate your imagination, you have the freedom to create your own success story that has elements of inspiration, leadership, values and innovativeness.

SPINEL



DELIVERING

MORE THAN EXPECTED

Spinel, is a project dedicated to those who are trend setters and create a trail of inspiration. With its upscale location, superb amenities like 24x7 security, excellent parking facilities, heightened office spaces, optimum space utilization etc.

VALET PARKING FOR MEMBERS



AC GROUND FLOOR FOYER



10' HEIGHTEN OFFICE SPACES



CONFERENCE HALL



CCTV SURVEILLANCE



24X7 SECURITY



3 BASEMENTS WITH MECHANICAL PARKING

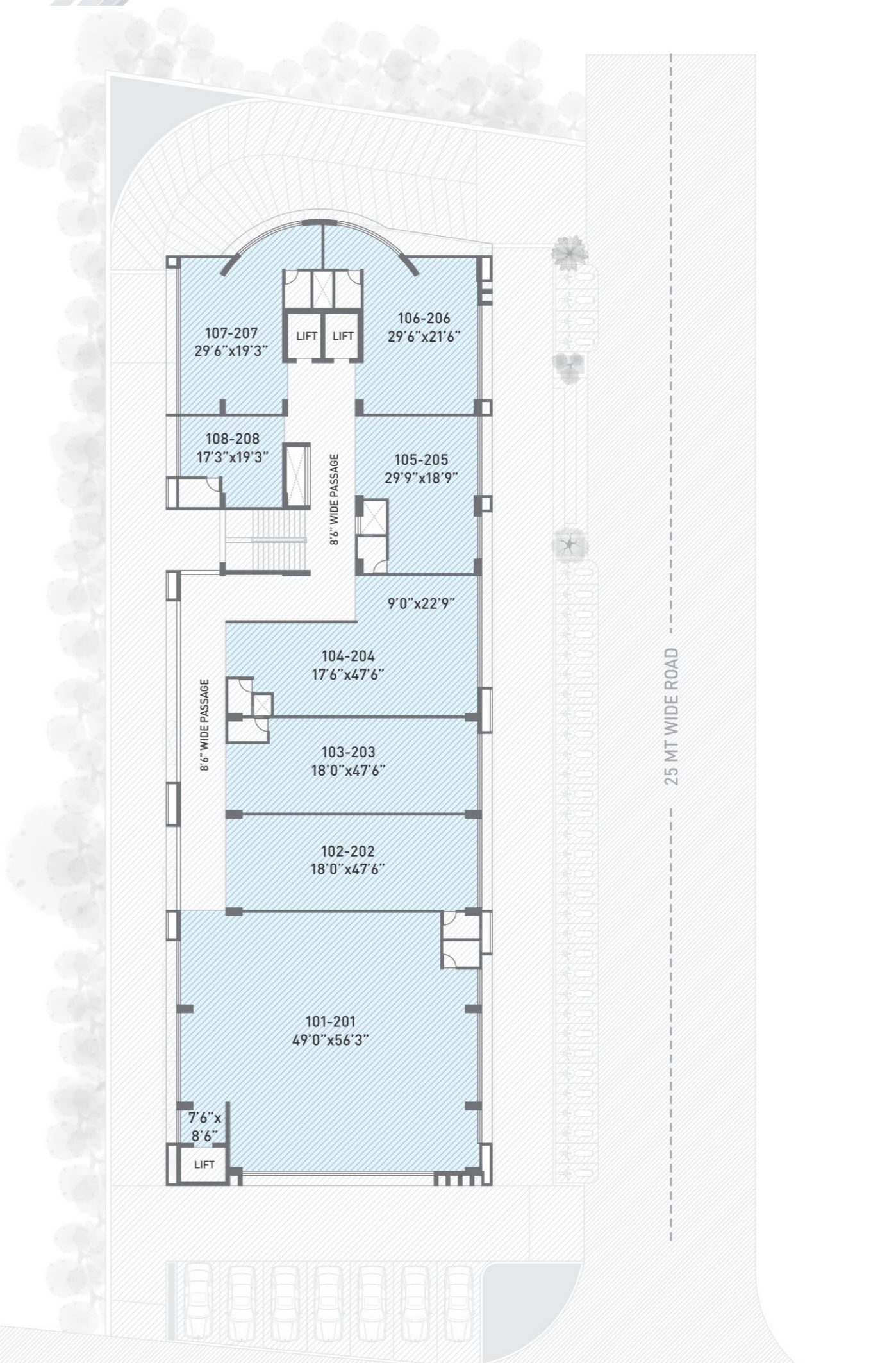


SPINEL

GROUND FLOOR



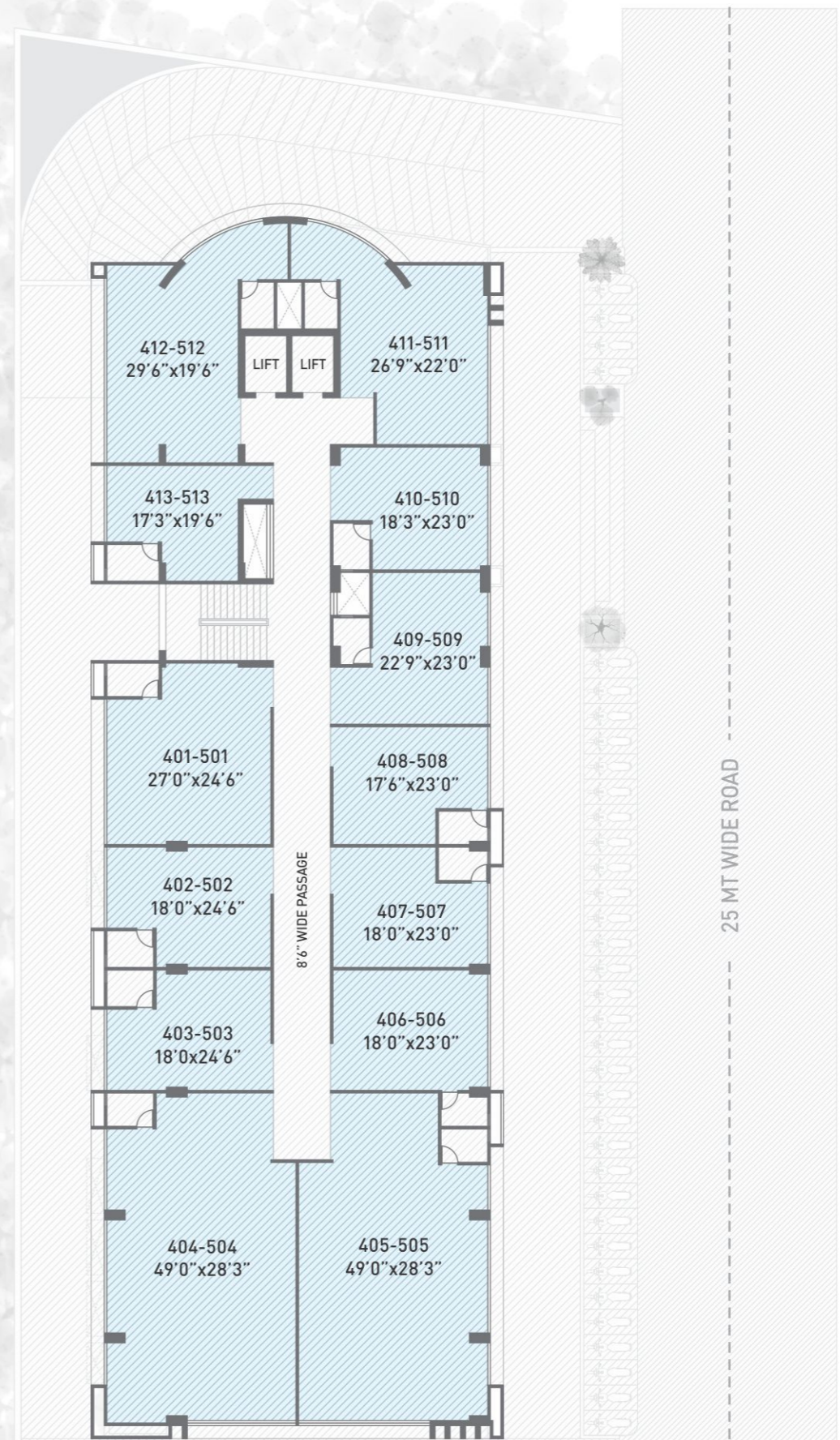
1ST & 2ND FLOOR



3RD FLOOR



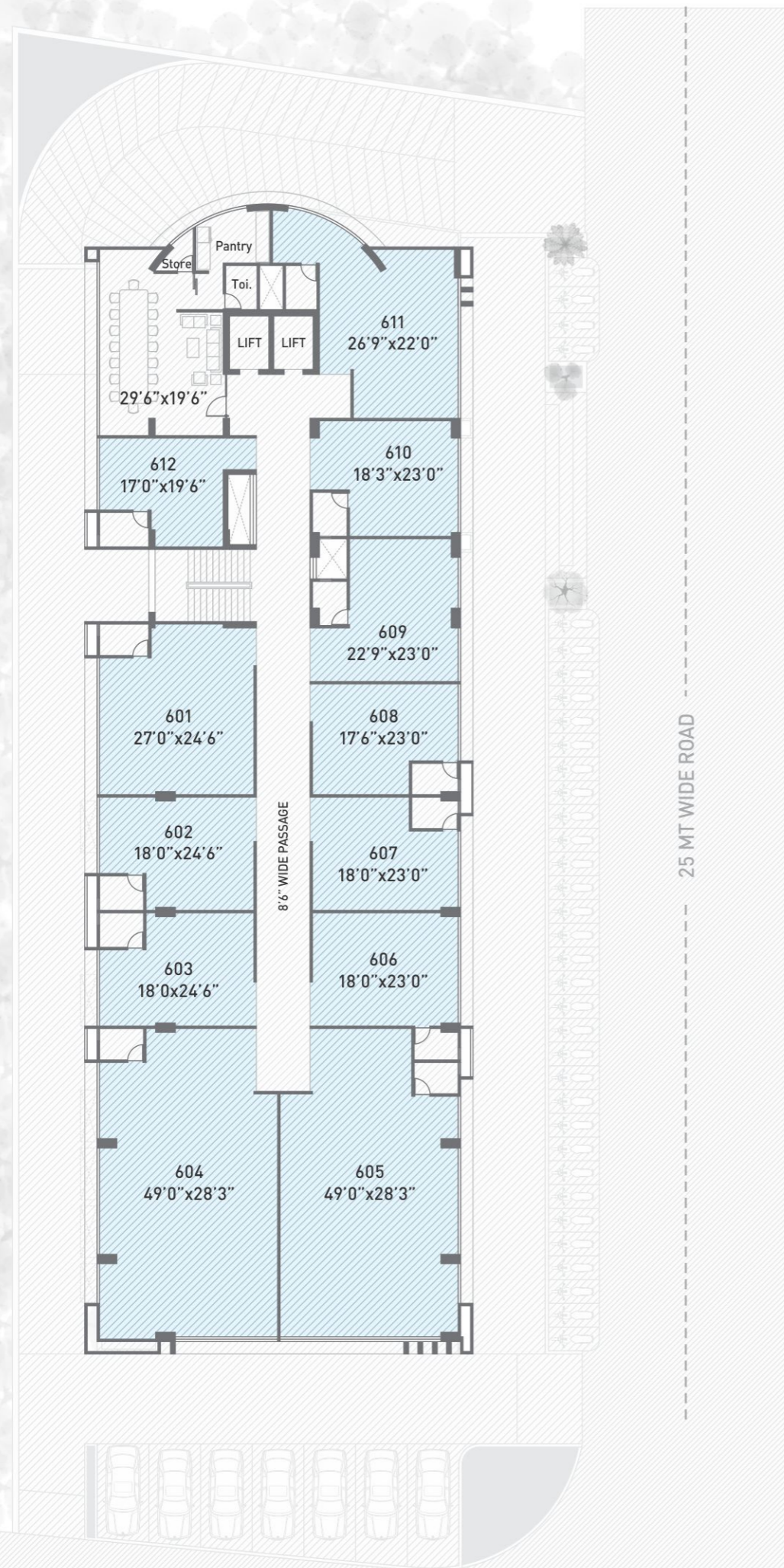
4TH & 5TH FLOOR



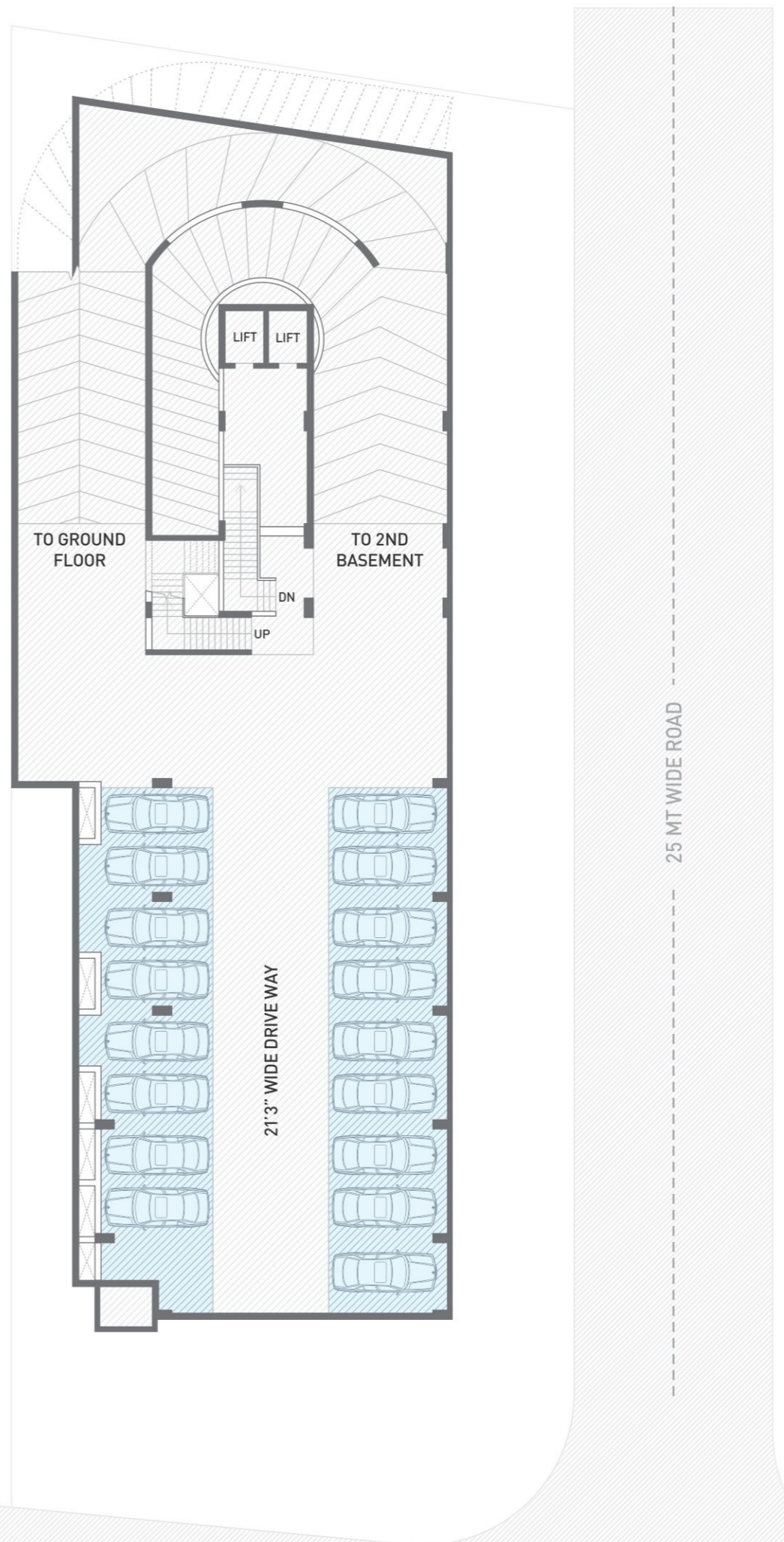
S.G. HIGHWAY

S.G. HIGHWAY

6TH FLOOR



1ST, 2ND & 3RD BASEMENT



ELEVATES

PLACE THAT



A place which accelerates you towards progress & elevating you to a higher pedestal of success, and location that looks up to your goals and helps you to achieve that you dreamed of.

SPINEL

SPE CIFI CA TION

STRUCTURE

Earthquake resistant safe & sound RCC frame structure as per IS.

WINDOWS

Fully glazed anodized aluminum windows

FLOORING

- Vitrified tiles in flooring
- Stone flooring in staircase
- Vitrified flooring in corridors & passage
- Main entrance lobby with italian marble
- China mosaic with water proofing treatment on terrace

TOILET / PLUMBING

- Vitrified tiles in flooring. concealed plumbing with superior quality sanitary ware

DOORS

- Internal doors - flush door. Superior quality C.P. or S.S. finish hardware fittings with vincy
- Main doors with Veneer finish

PAINTS

- Inside - putty finish on all walls

ELEVATORS

- Premium quality high speed fully automatic elevator

ELECTRICAL

- Concealed wiring and modular switches of each unit / office



SPINEL

LOCATION



It is always beneficial to keep your business in limelight, where it gets maximum exposure. The project understands the value of being in the centre of hype. It is located on the booming S.G. Highway connecting the twin cities Ahmedabad to Gandhinagar. It is situated opposite Kargil petrol pump and is a stone's throw distance from Gujarat High court, Sola civil hospital, Cinemax etc. It is very well connected with prime areas of Ahmedabad city. Its ideal location is sure to give your business an accelerating boost.

SPINEL

Opp. Kargil Petrol Pump, S. G. Highway, Ahmedabad.
+91 990 990 1781 | sales@affinityventure.co.in

PROJECT BY



ARCHITECT



STRUCTURE ENGINEER



LEGAL ADVISER

NEHAL N. SHAH
& ASSOCIATE

