



FORTUNE VILLA

4B2HK PREMIUM BUNGALOWS

Developers: **JAY AMBE BUILDCON** | Site: Fortune Villa, B/s. Lalita Party Plot, Opp. The Earth Infinity, Bhayali, Vadodara. | Mo: 95868 82928 97234 10003

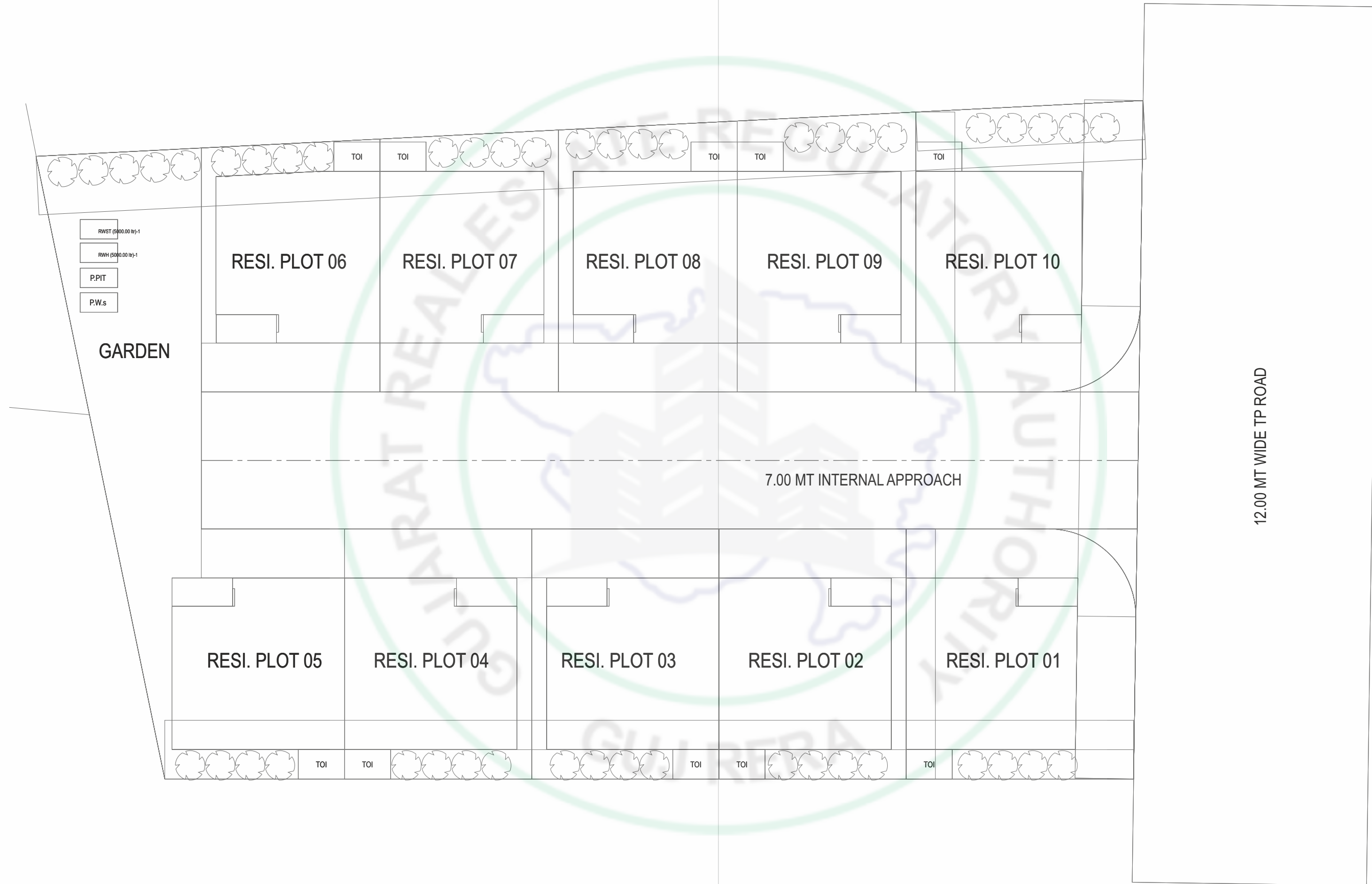
Architect: **DESIGN STUDIO**
architects & interiors

Structural Constantan: **innoVUS**
ENGINEERING CONSULTANCY

Disclaimer: All plans are subject to amendments and approval by the relevant authorities. All photography and computer imagery are artist's impression and are provided for illustrative and indicative purposes only. While every reasonable care has been taken in providing this information, the developers cannot be held responsible for any inaccuracy. In case of cancellation of booking, an administrative charge of Rs. 51000/- and the amount for the extra work done (if any) would be deducted from the refund amount. Subject to Vadodra Jurisdiction.



Layout Plan

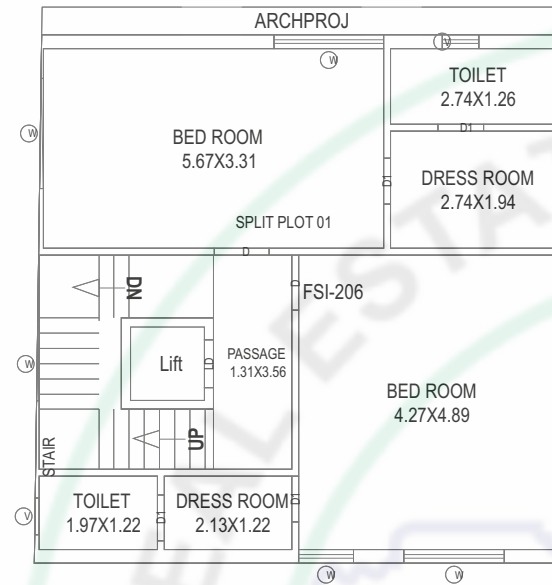


PLOT (01)

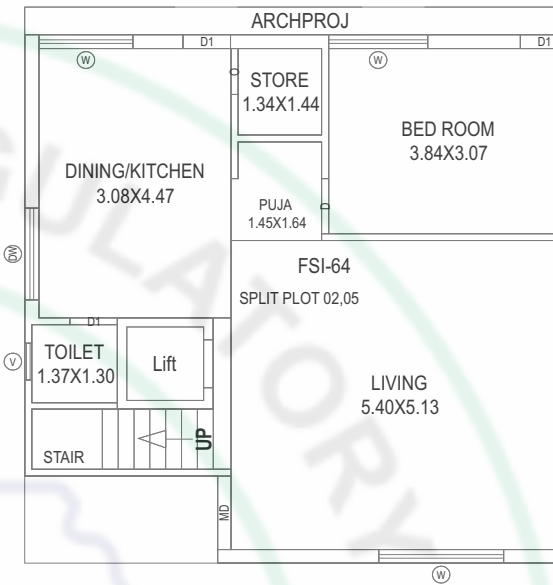
PLOT (02 04)



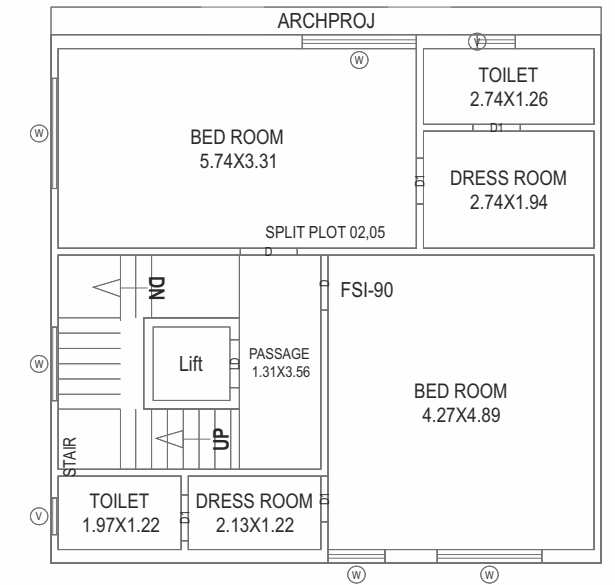
GROUND FLOOR PLAN



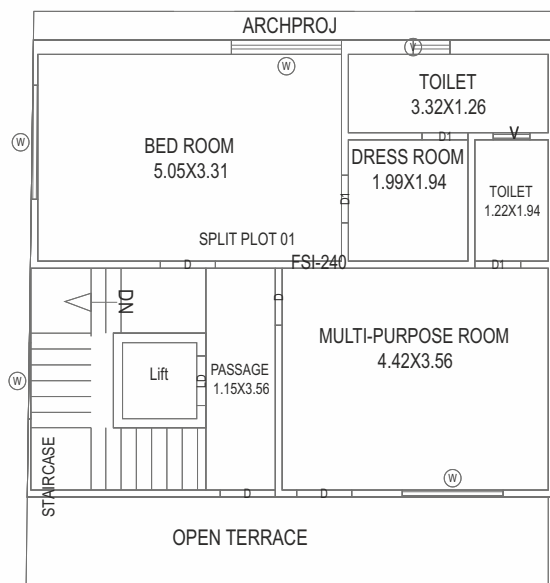
FIRST FLOOR PLAN



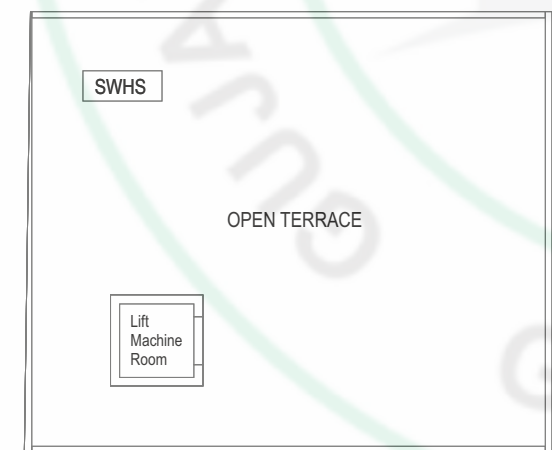
GROUND FLOOR PLAN



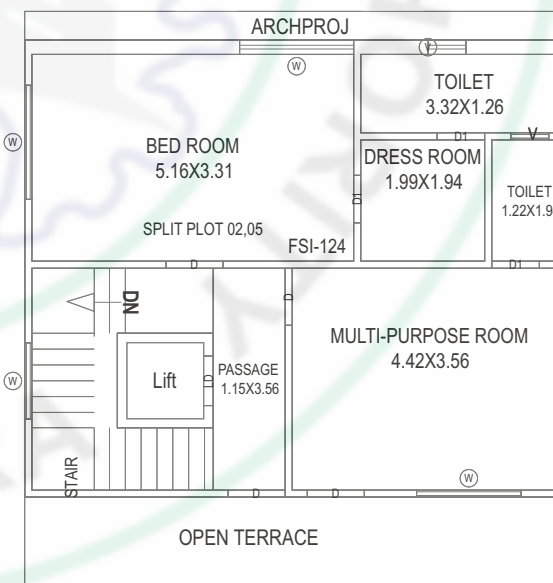
FIRST FLOOR PLAN



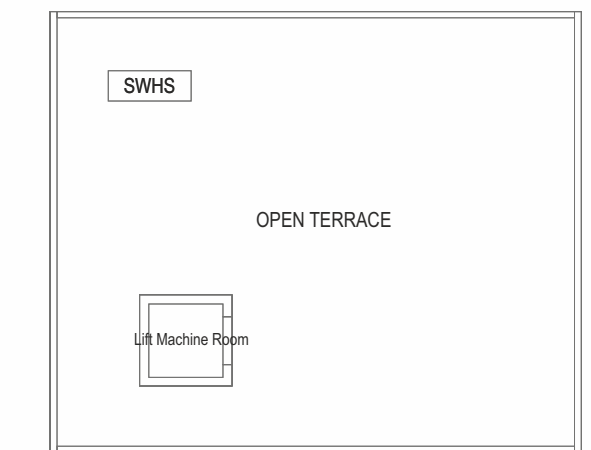
SECOND FLOOR PLAN



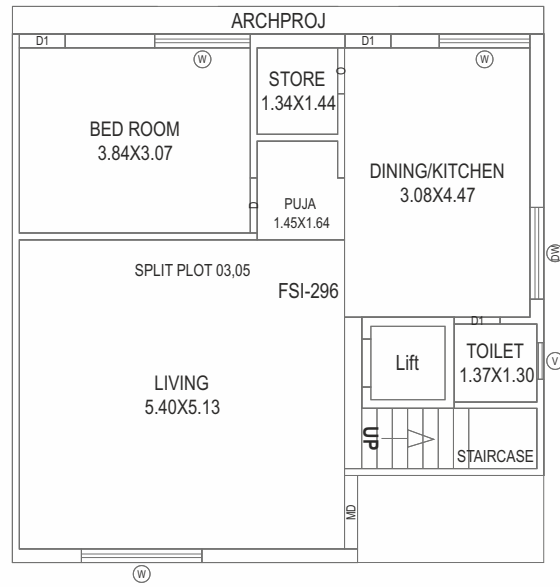
TERRACE FLOOR PLAN



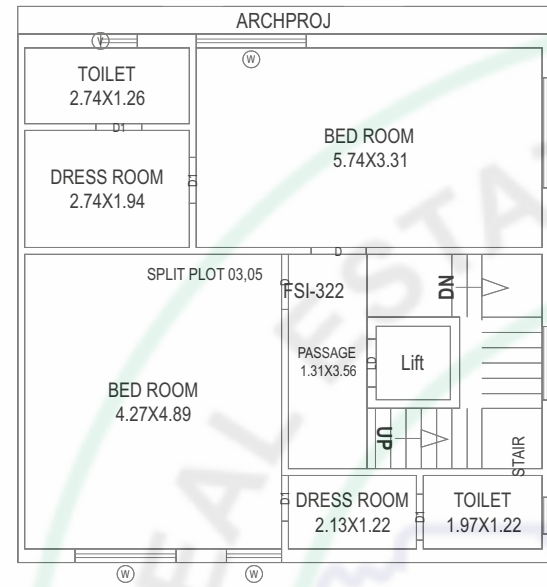
SECOND FLOOR PLAN



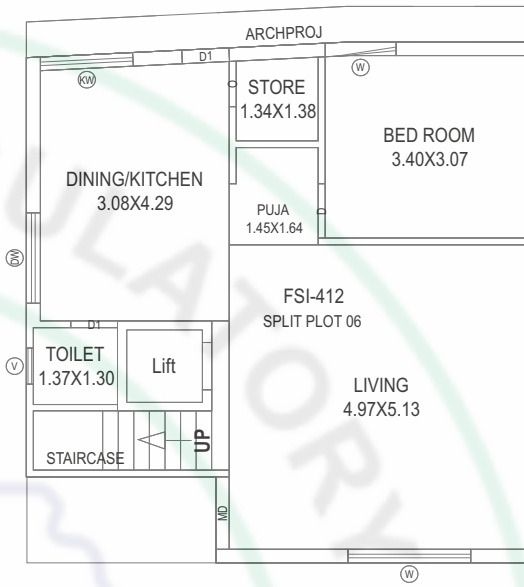
TERRACE FLOOR PLAN



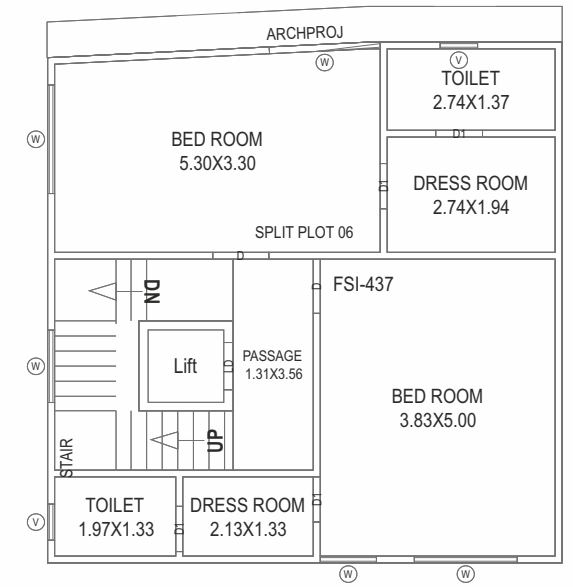
GROUND FLOOR PLAN



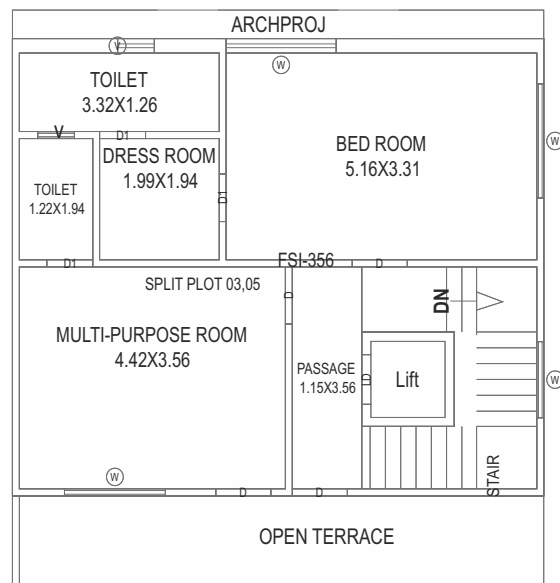
FIRST FLOOR PLAN



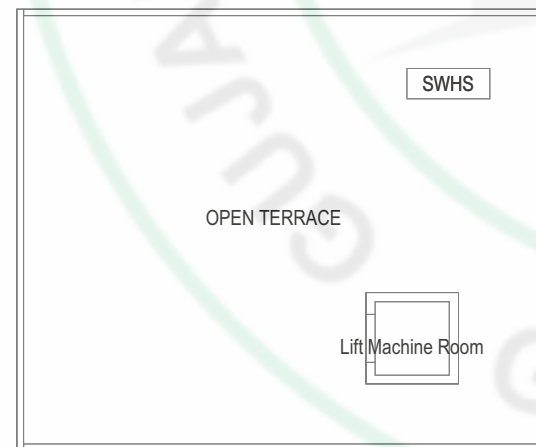
GROUND FLOOR PLAN



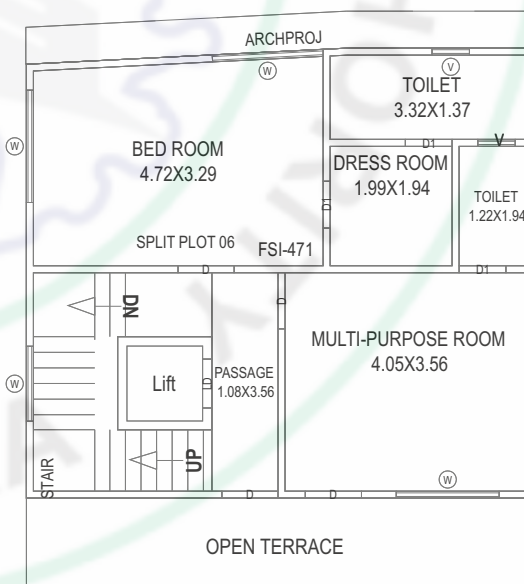
FIRST FLOOR PLAN



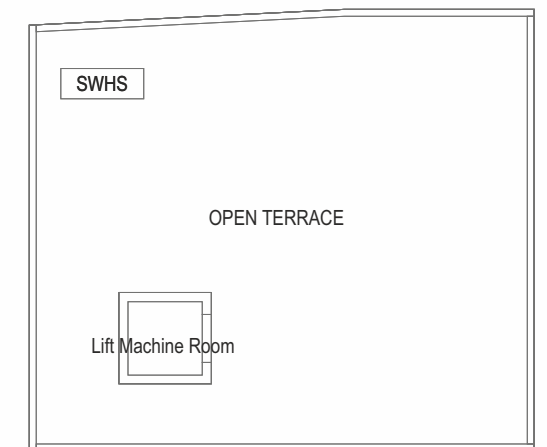
SECOND FLOOR PLAN



TERRACE FLOOR PLAN

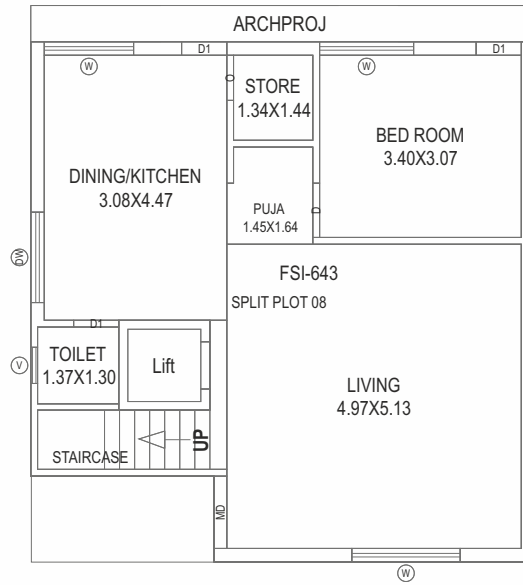


SECOND FLOOR PLAN



TERRACE FLOOR PLAN

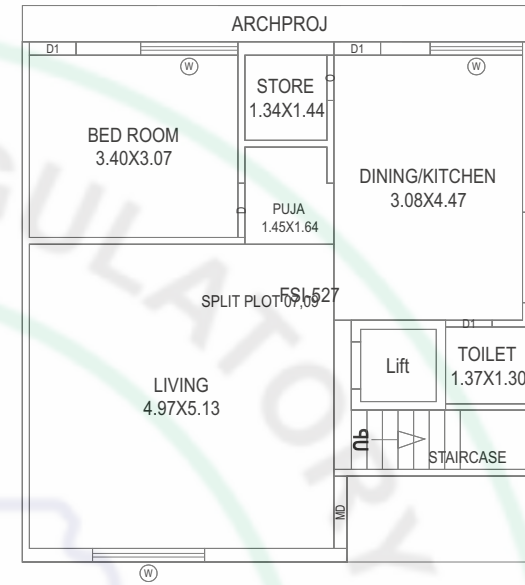
PLOT (08)



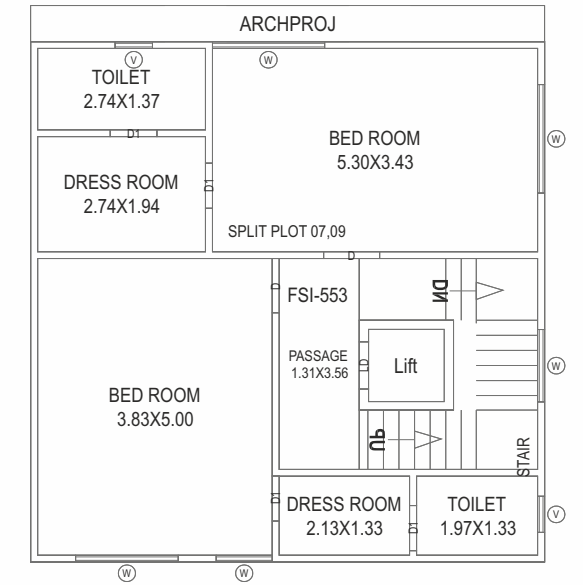
GROUND FLOOR PLAN



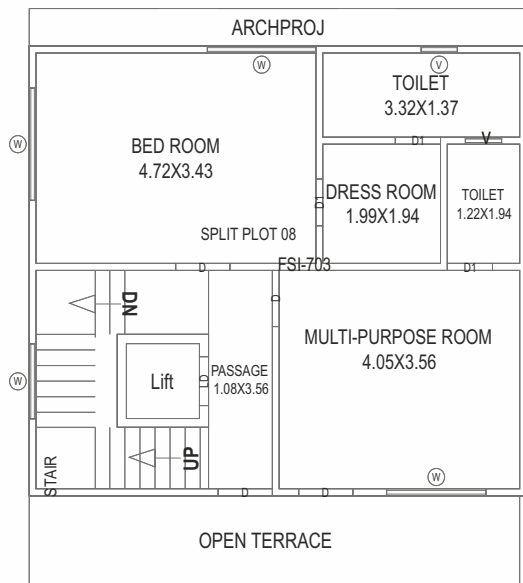
FIRST FLOOR PLAN



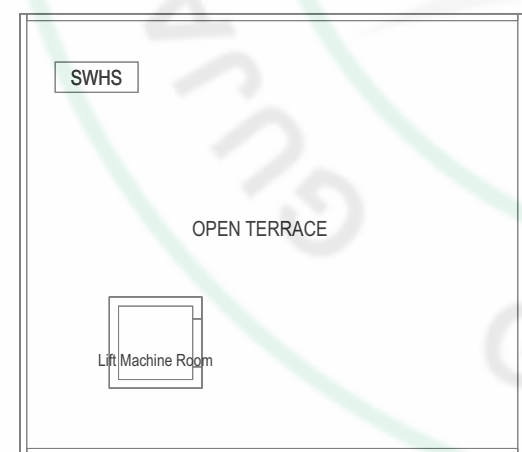
GROUND FLOOR PLAN



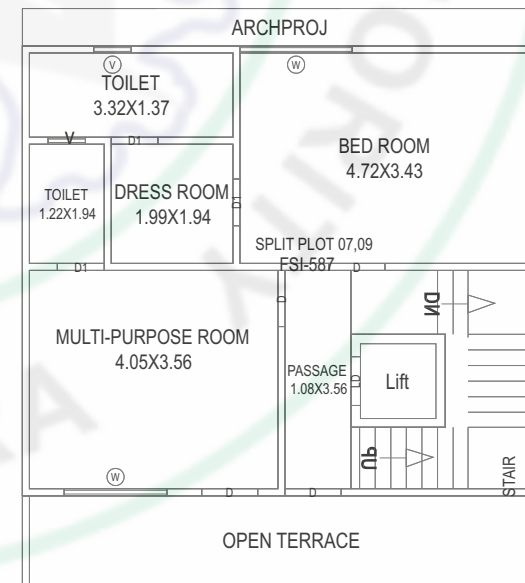
FIRST FLOOR PLAN



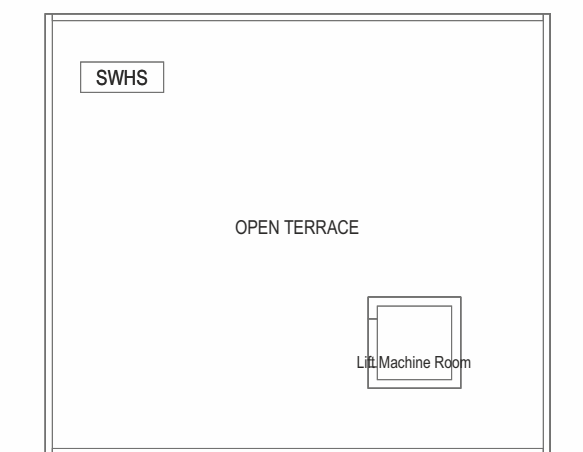
SECOND FLOOR PLAN



TERRACE FLOOR PLAN



SECOND FLOOR PLAN



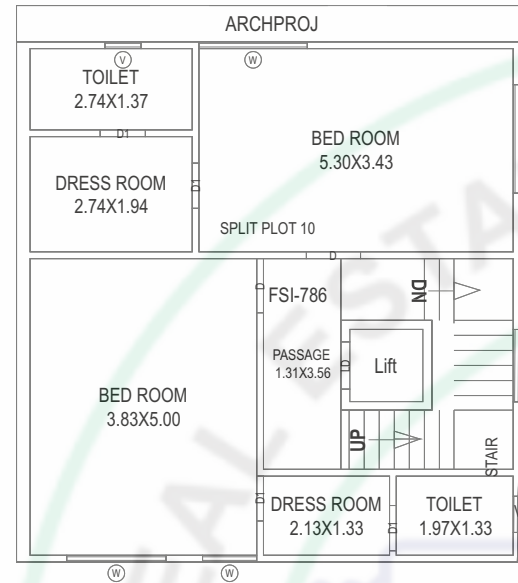
TERRACE FLOOR PLAN

PLOT (07 09)

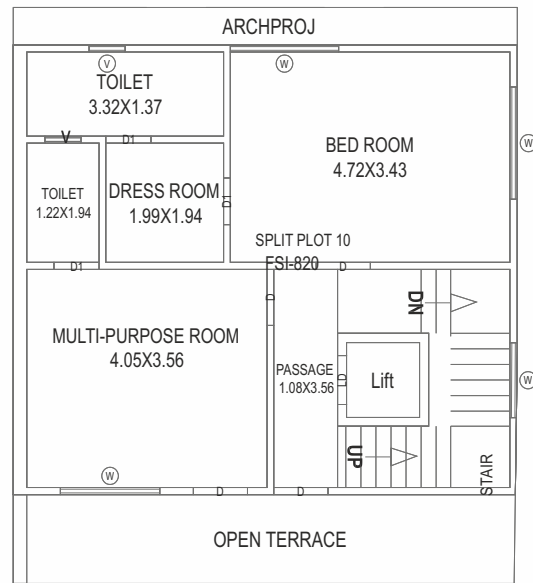
PLOT (10)



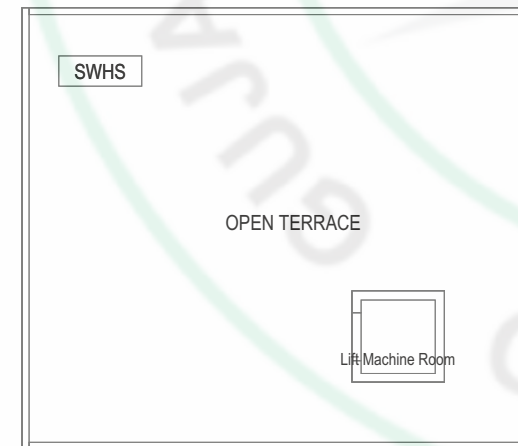
GROUND FLOOR PLAN



FIRST FLOOR PLAN



SECOND FLOOR PLAN



TERRACE FLOOR PLAN

Specifications

STRUCTURE:

- All RCC & Brick Masonry work as per structural engineer's design.
- Elevation work as per Architect Design.

FLOORING:

- Vitrified tiles flooring in all rooms.
- Granite flooring in stair case with railing.
- Flooring in Parking Area.

PAINT & FINISH:

- Interiors: Smooth Plaster with Wall Putty & Primer
- Exteriors: Double Coat Plaster with standard quality of paint.

DOORS & WINDOWS:

- Attractive Entrance Door with wooden frames with standard quality safety lock Others are flush door with granite frames and Both side decorative laminate.
- Fully Glazed aluminum powder coated windows with safety grills & mosquito nets

KITCHEN:

- Granite platform with SS Sink & designer tiles upto slab level.
- Wash area with ceramic tiles and natural stone flooring

BATHROOMS & TOILETS:

- Designer bathrooms with Premium GVT Tiles upto Slab Level
- Branded Premium Bath fittings
- Concealed internal plumbing with hot water point.

LIFT PROVISION

- Lift Well provision made. Lift to cost extra.

ELECTRIFICATION:

- Concealed copper wiring of approved quality
- Branded Premium quality modular switches with sufficient electrical points as per architect's plan
- AC points in all bedrooms & Living Room

WATER SUPPLY:

- 24 hours water supply through overhead & underground tank of sufficient size
- Submersible pump with auto sensor

TERRACE:

- Open terrace finished with chemical water proofing and china mosaic flooring/tiles