

PALAK ESTRELLA

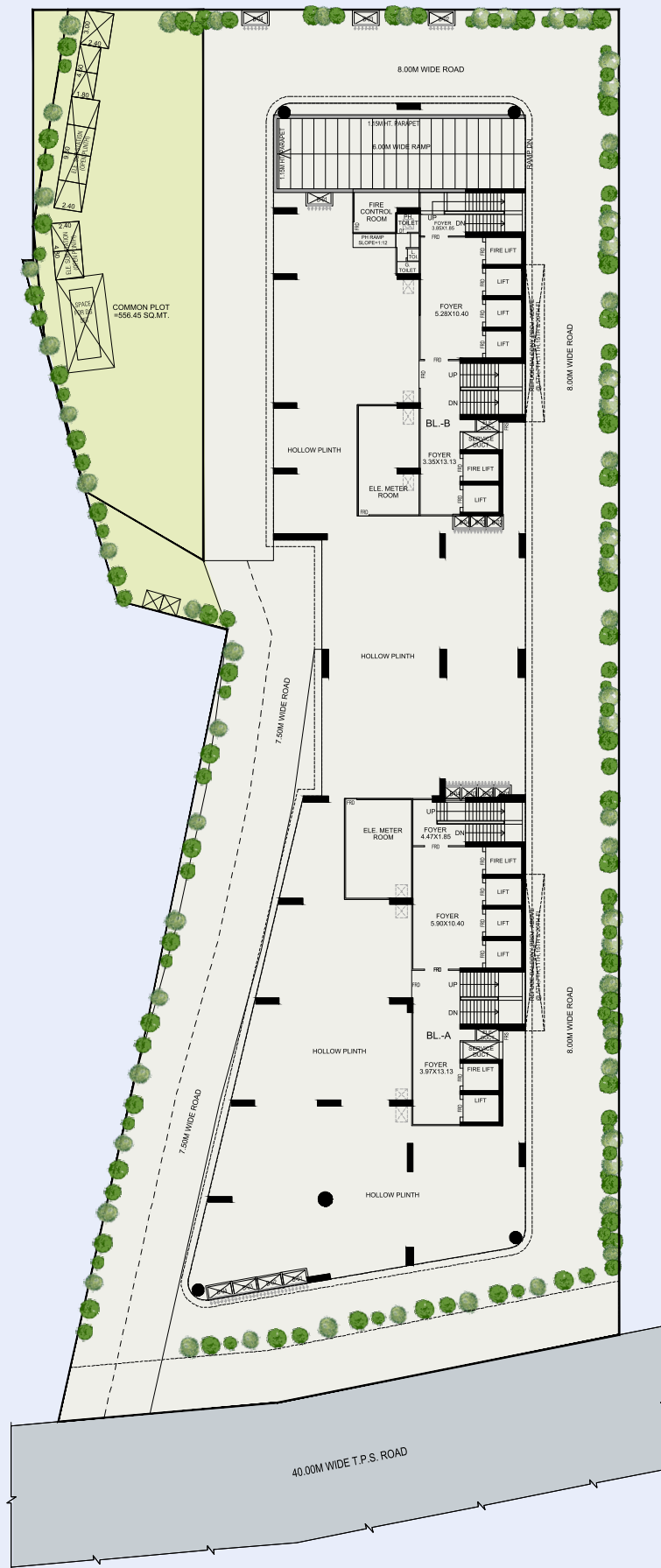


Opp Swati Senior, Near Swagat Bungalow,
Bopal-Ambli Road, Ahmedabad-380058

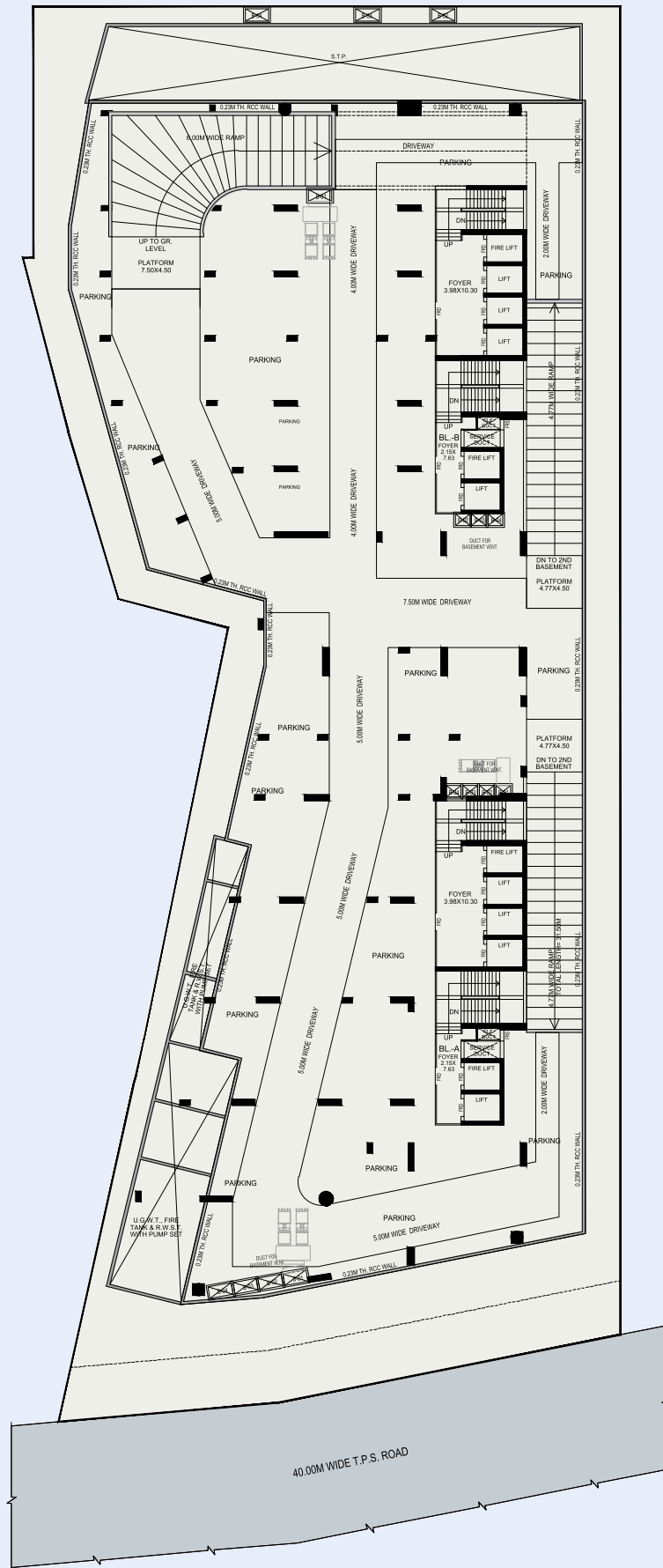
PALAK ESTRELLA



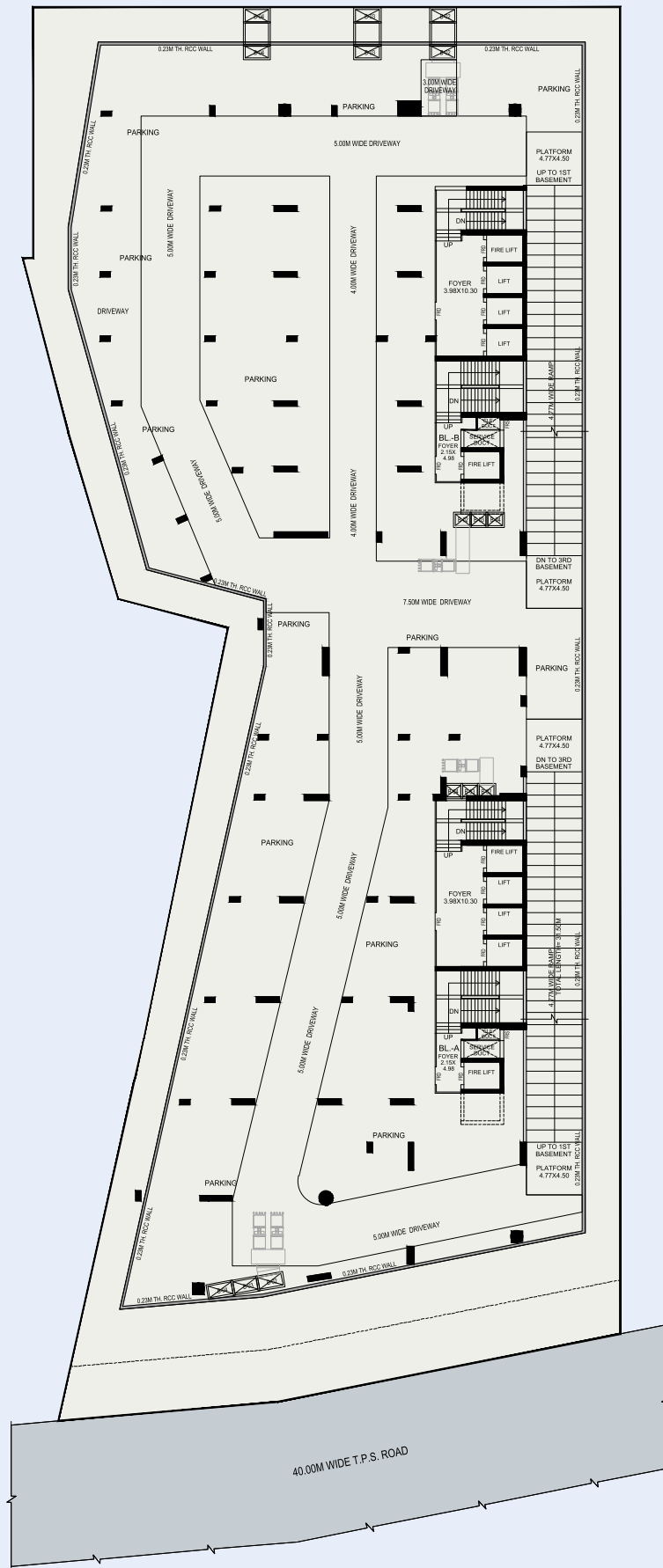
GR Level Plan



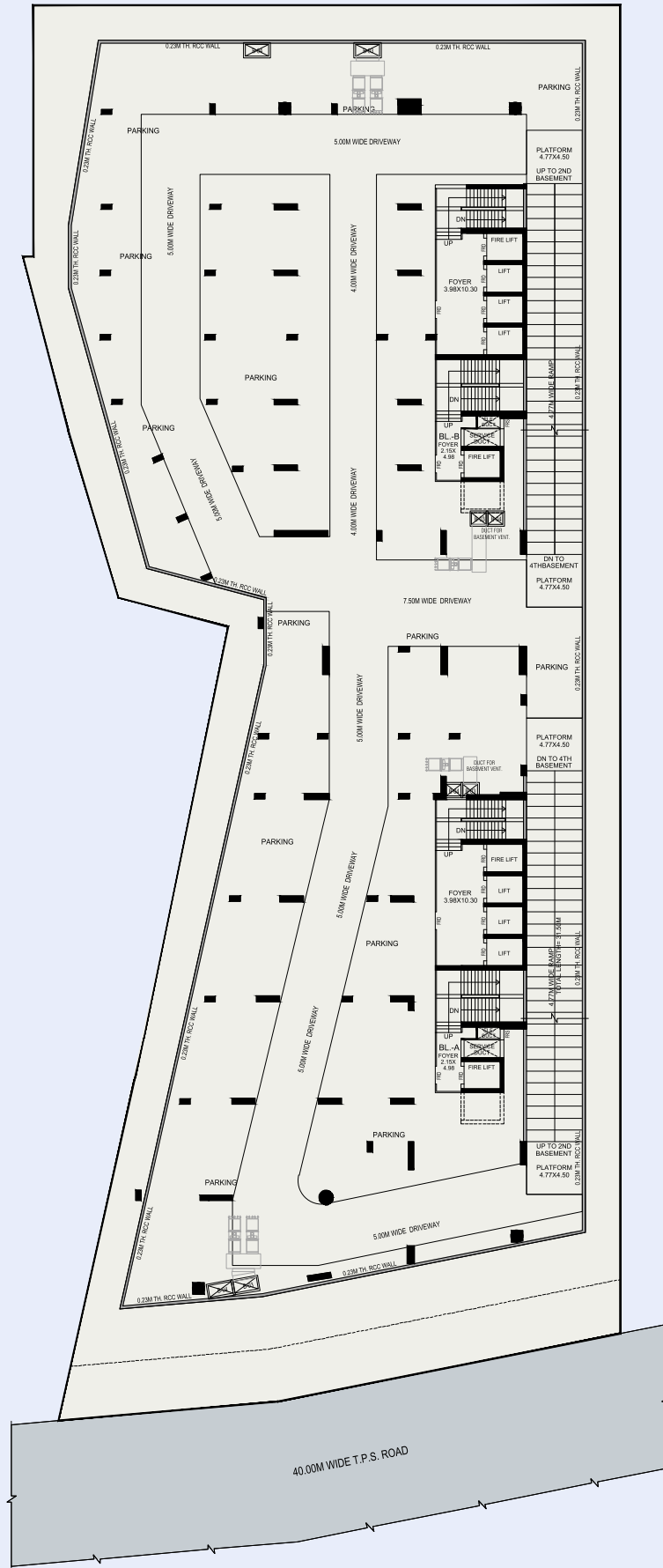
1st Basement Plan



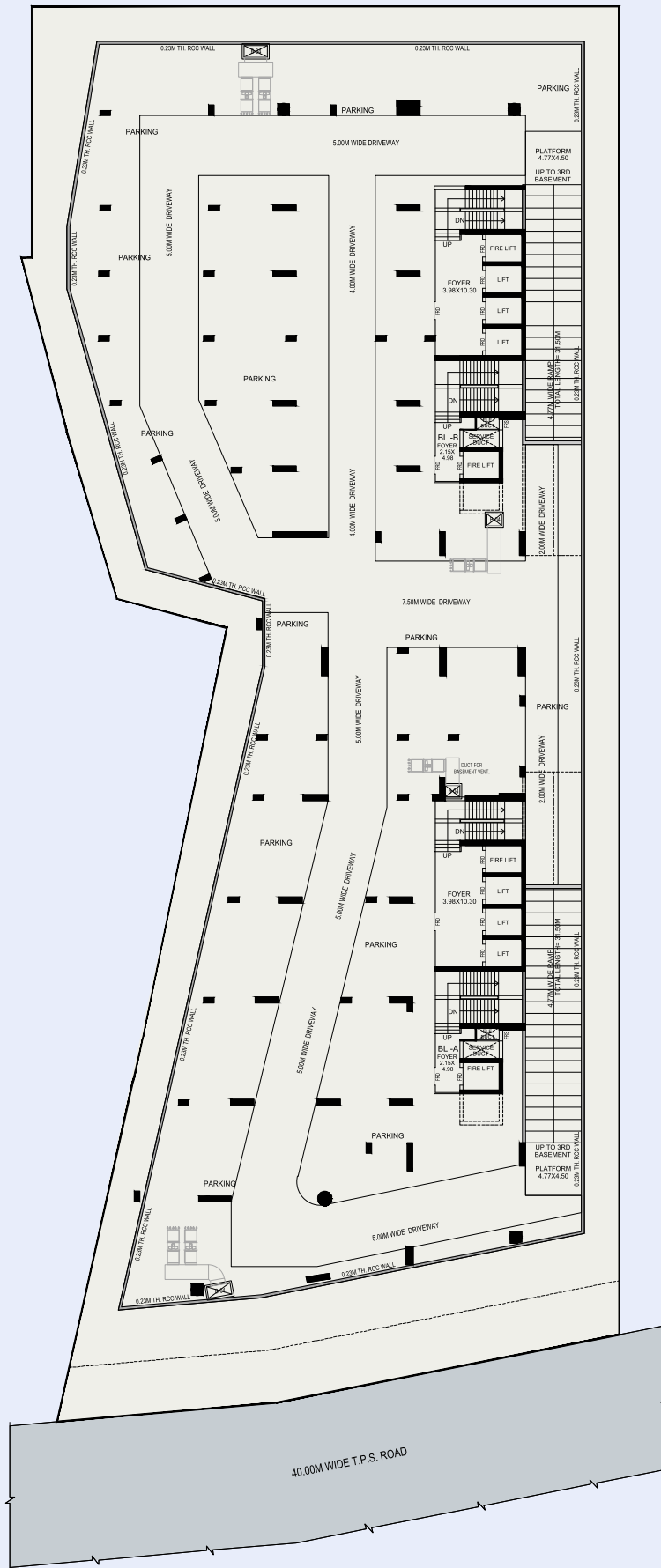
2nd Basement Plan



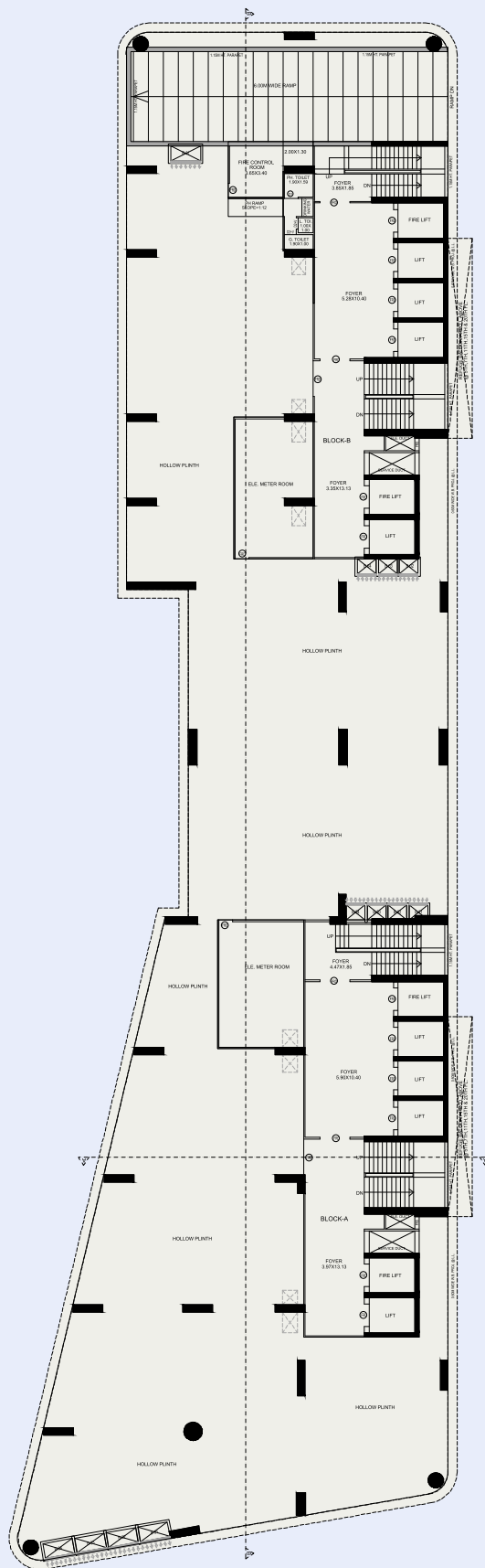
3rd Basement Plan



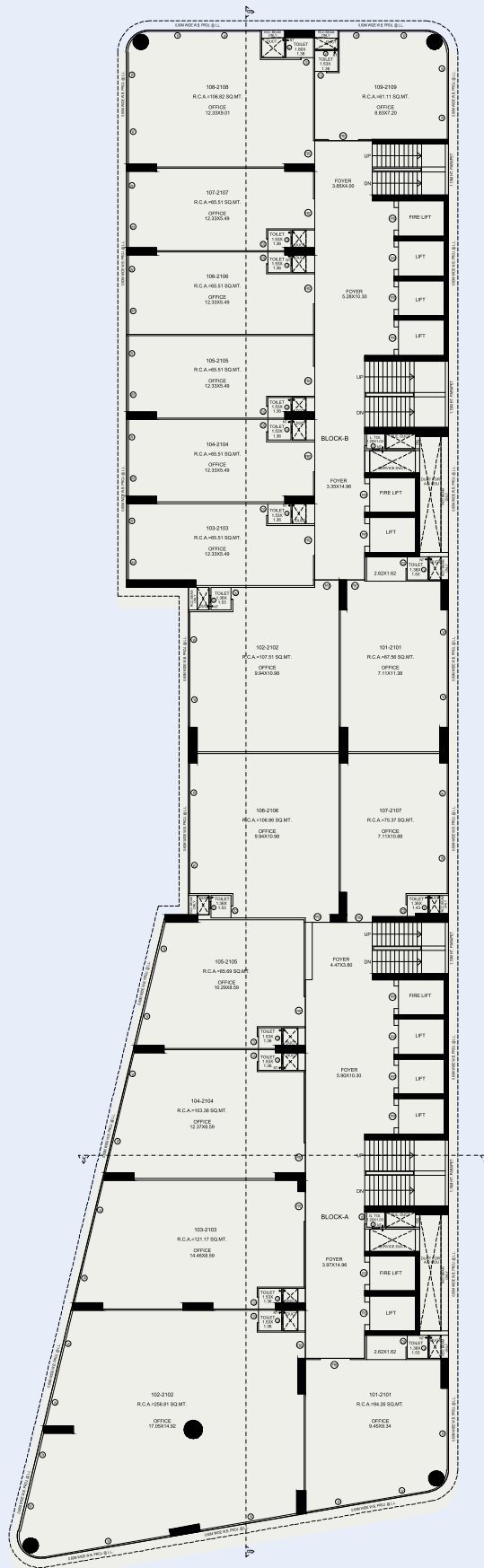
4th Basement Plan



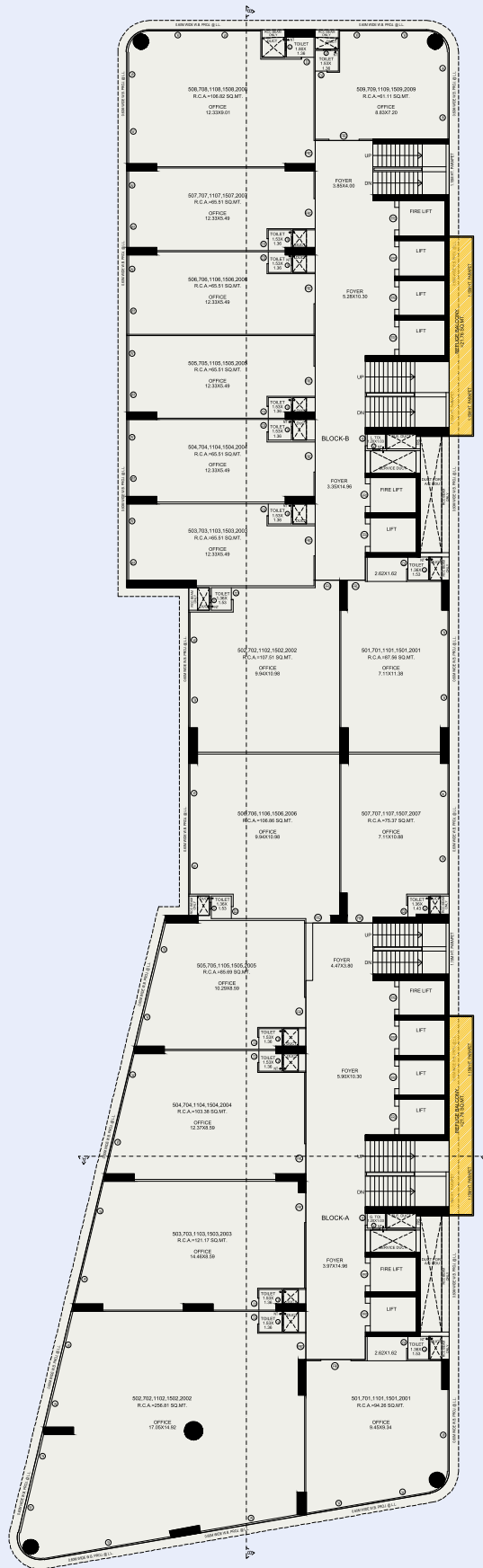
Ground Floor Plan

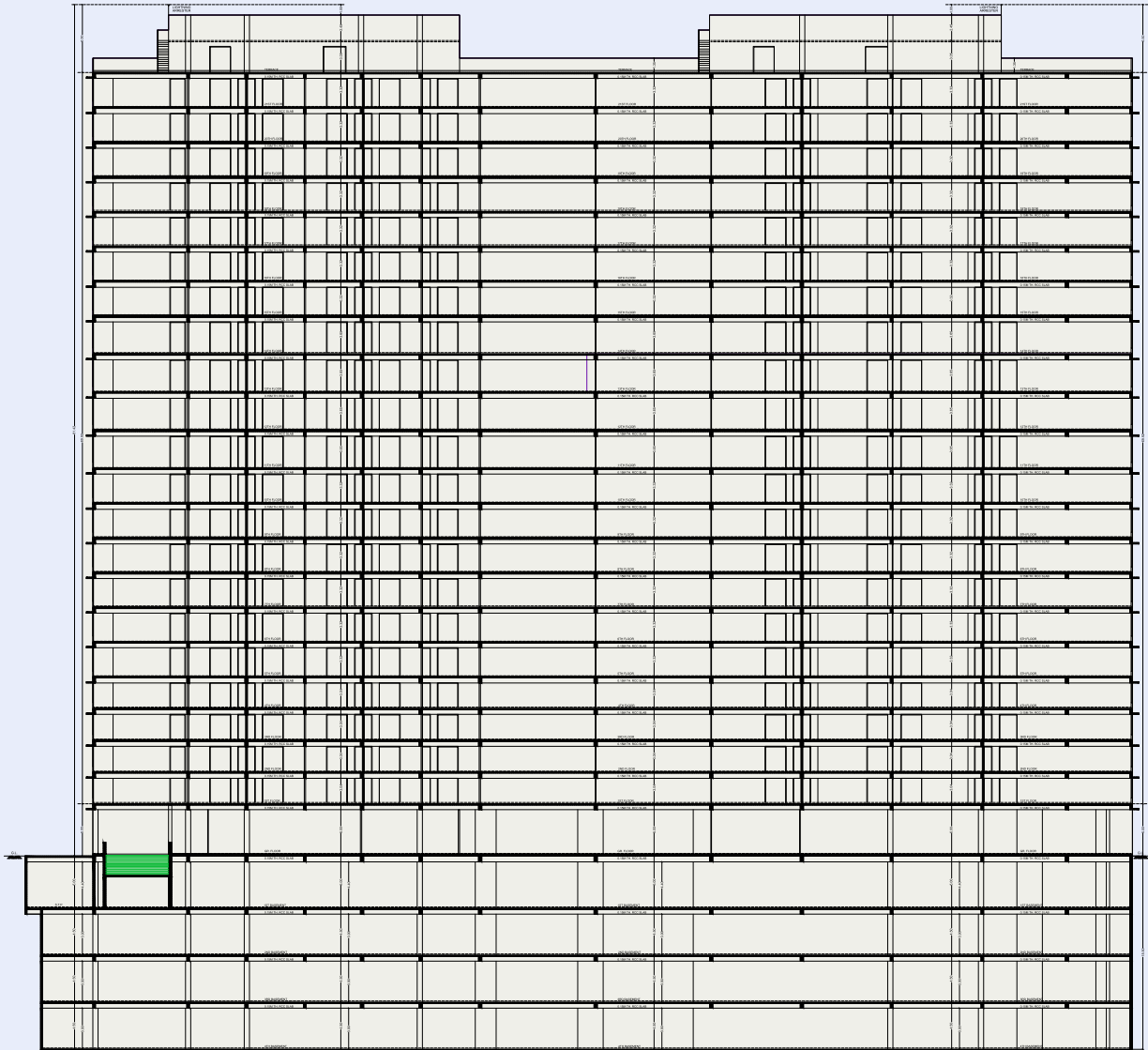


1st, 2nd, 3rd, 4th, 6th, 8th, 9th,
 10th, 12th, 13th, 14th, 16th,
 17th, 18th, 19th, & 21st
 Floor Plan

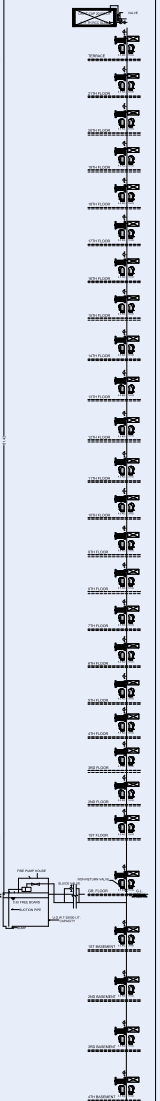


5th, 7th, 11th, 15th, 20th
 Floor Plan
 (Refuge Area)





SECTION 8-8



SECTION 8-9

Specification

Structure

Earthquake Resistant Safe & Sound RCC Frame Structure

Windows

Fully Glazed Anodized Aluminium Windows

Flooring

Vitrified Tiles In Flooring

Stone Flooring In Staircase

Vitrified/Stone Flooring In Corridors & Passages

China Mosaic With Water Proofing Treatment On Terrace

Toilet/Plumbing

Vitrified Tiles In Flooring

Concealed Plumbing With Superior Quality Branded Sanitaryware

Electrical

3 Phase Concealed Copper Wire Module

Paints

External -Double Coat Plaster/Texture/Cladding As Per Architect Detail

Elevators

Premium Quality High Speed Elevator With Automatic Door

Waterproofing

Waterproofing In All Toilets & Terrace Area

PALAK ESTRELLA

PALAK SHREE REALTY

416 - Palak Prime,
Opp Doubletree by Hilton,
Iscon Ambli Road,
Ahmedabad - 380058

Email id - sales@palakgroup.co.in

Contact no - 9099965887

Rera Reg. No.:
www.gujrerar1gujarat.cov.in