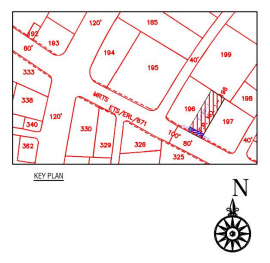
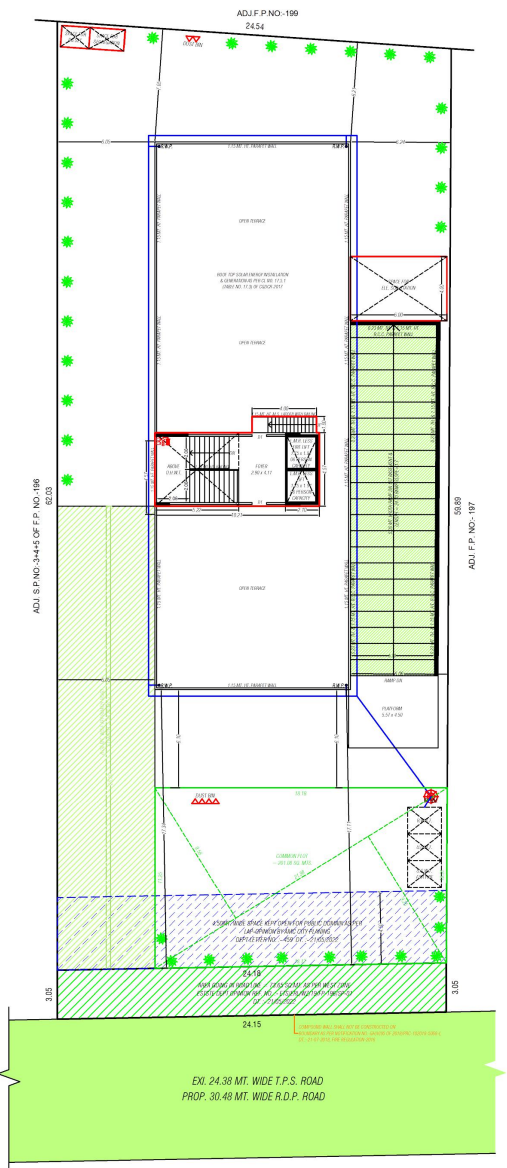
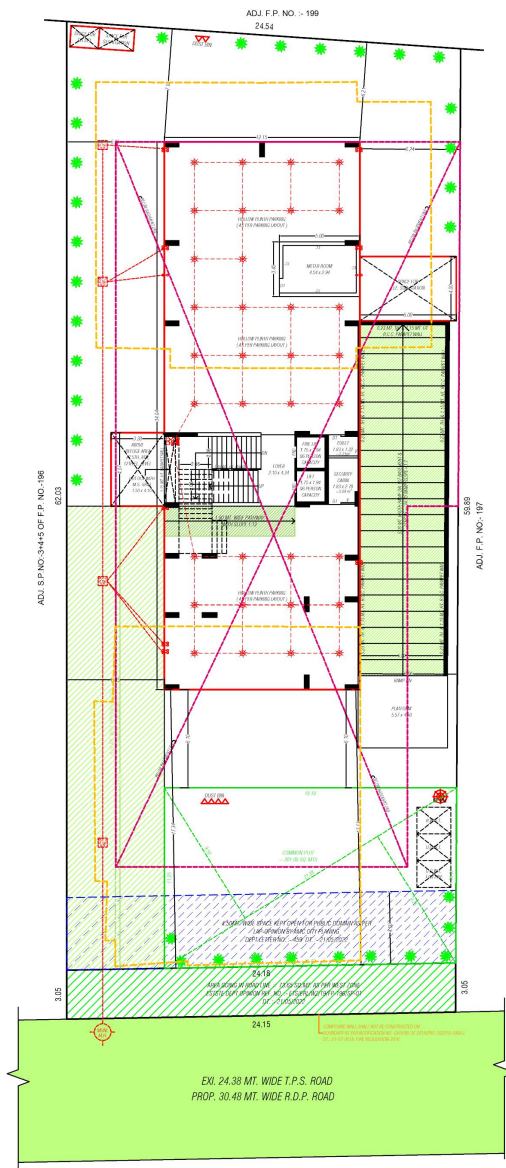


# PROJECT-24 CARAT GOLD COIN APARTMENT

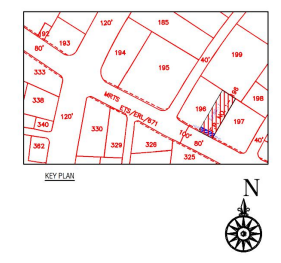
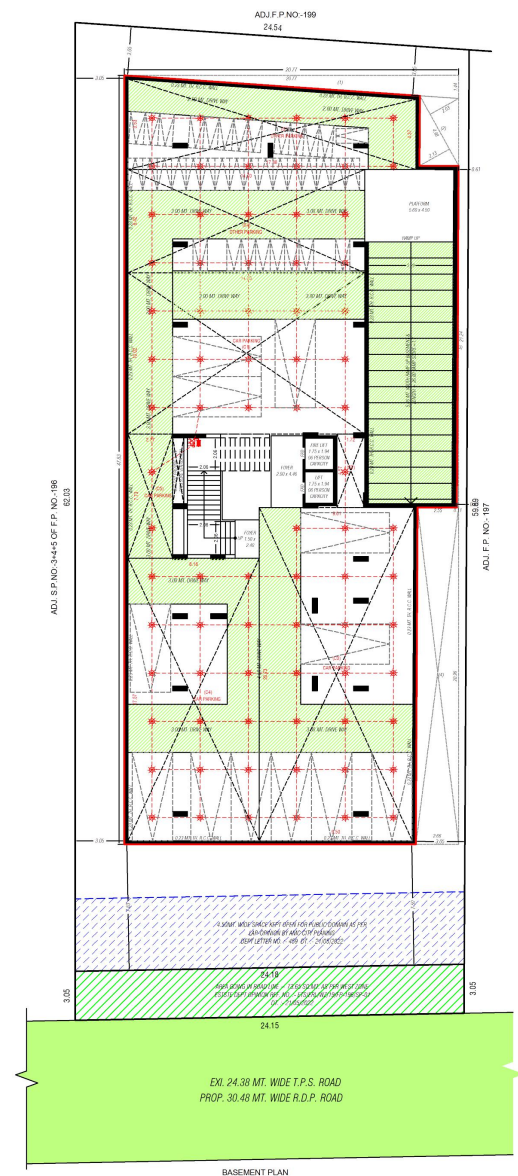
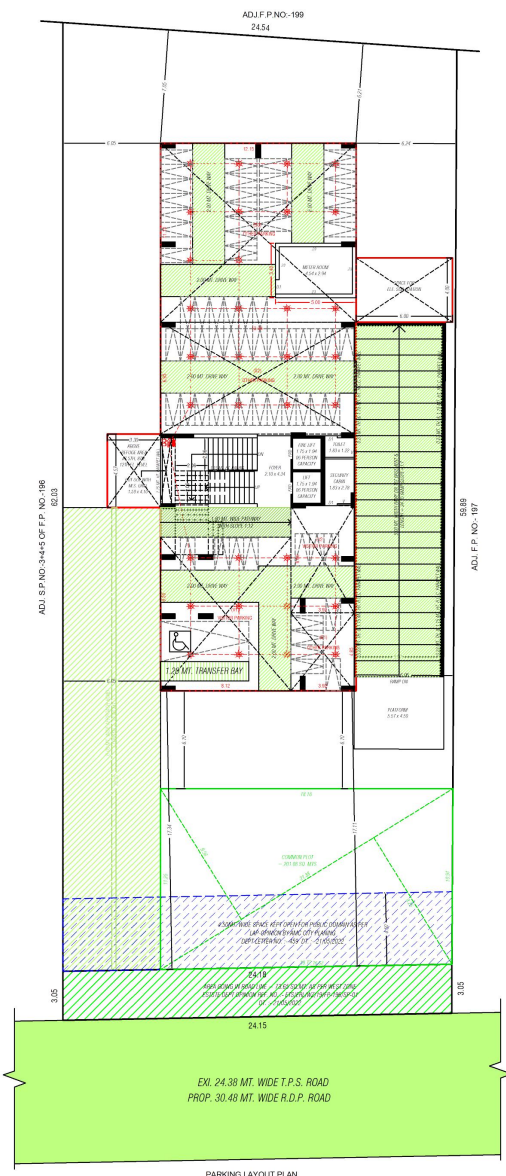
Location:Near Vijay cross road,  
Navrangpura, Ahmedabad

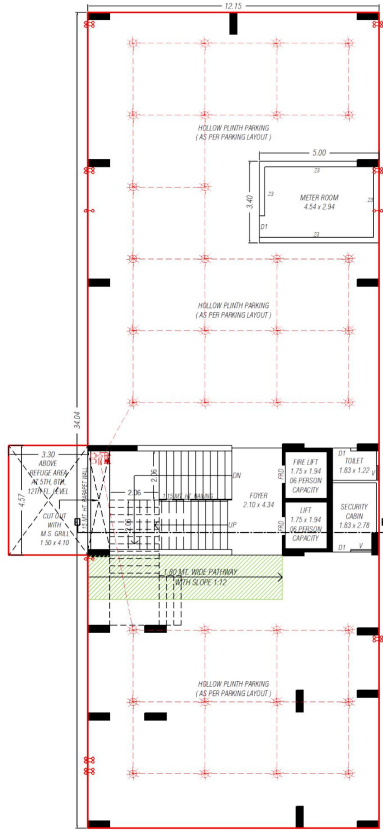
RERA REG. NO- .....



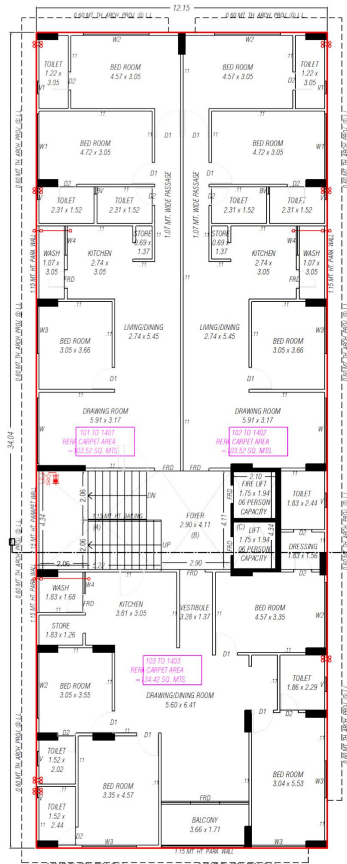
LAYOUTS

# LAYOUTS

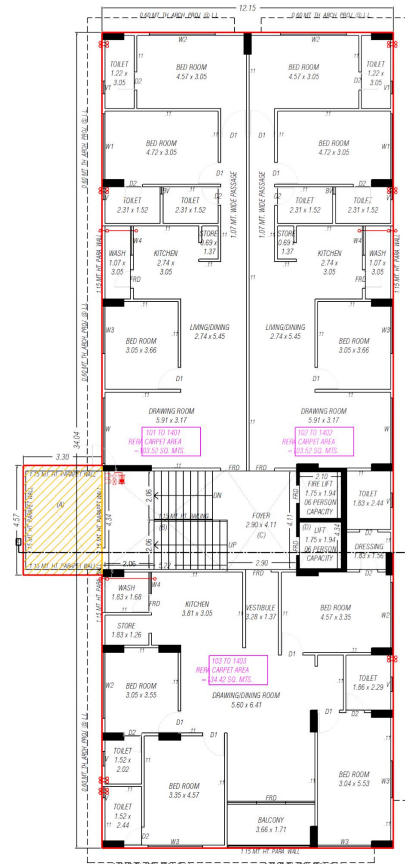




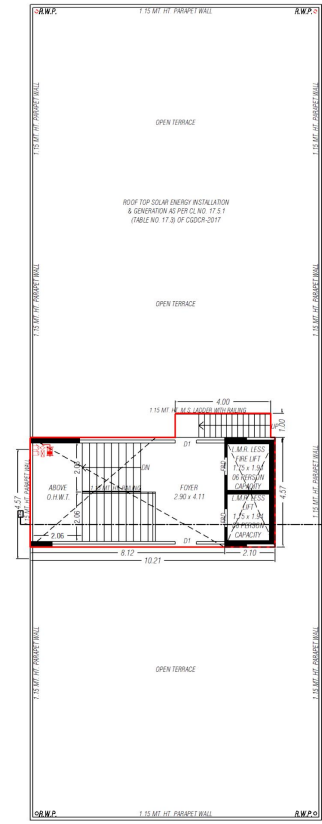
GROUND FLOOR PLAN (HOLLOW PLINTH)



TYPICAL FLOOR PLAN  
(1ST TO 4TH, 6TH, 7TH, 9TH, 10TH, 11TH, 13TH, 14TH FL. PLAN)

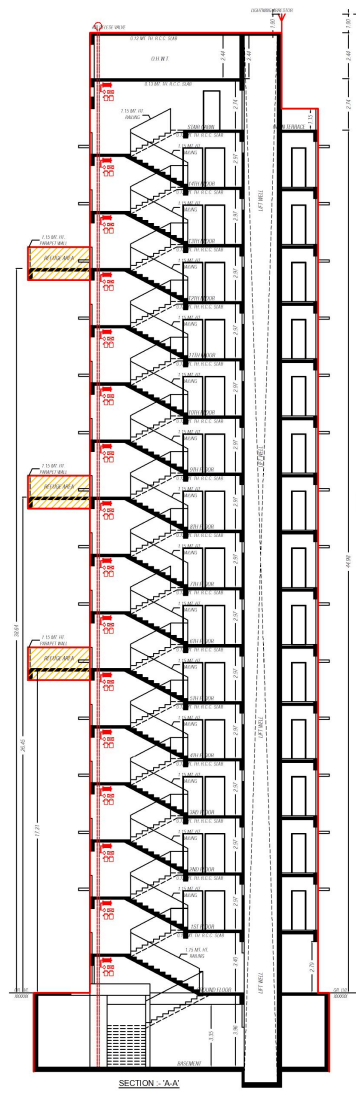
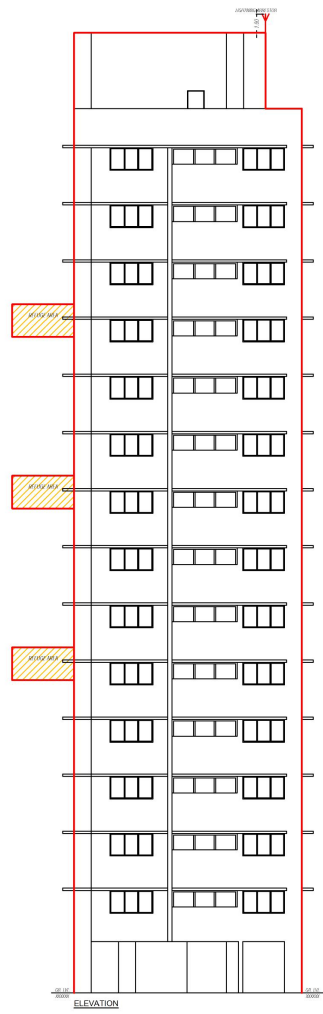


5TH, 8TH & 12TH FLOOR PLAN (REFUGE AREA)



OPEN TERRACE PLAN WITH STAIR CABIN L.M.R. & O.H.W.T.

# FLOOR PLANS



ELEVATION & SECTION

<i>RERA CARPET AREA TABLE</i>			
<i>UNIT NO.</i>	<i>RERA CARPET AREA</i>	<i>WASH AREA</i>	<i>BALCONY AREA</i>
<i>101 TO 1401</i>	<i>103.52</i>	<i>3.26</i>	<i>---</i>
<i>102 TO 1402</i>	<i>103.52</i>	<i>3.26</i>	<i>---</i>
<i>103 TO 1403</i>	<i>134.42</i>	<i>3.07</i>	<i>6.26</i>

<i>RERA CARPET AREA</i>		
<i>TYPICAL FLOOR ( 1ST TO 14TH FLOOR )</i>		
<i>101 TO 1401</i>	<i>5.91 x 7.96</i>	<i>= 47.04</i>
<i>102 TO 1402</i>	<i>4.84 x 3.05</i>	<i>= 14.76</i>
	<i>5.91 x 7.06</i>	<i>= 41.72</i>
	<i>TOTAL</i>	<i>= 103.52</i>
<i>WASH AREA</i>	<i>1.07 x 3.05</i>	<i>= 3.26</i>
<i>103 TO 1403</i>	<i>1.83 x 4.23</i>	<i>= 7.74</i>
	<i>10.10 x 1.68</i>	<i>= 16.97</i>
	<i>5.11 x 9.72</i>	<i>= 49.67</i>
	<i>3.66 x 8.01</i>	<i>= 29.32</i>
	<i>3.16 x 9.72</i>	<i>= 30.72</i>
	<i>TOTAL</i>	<i>= 134.42</i>
<i>WASH AREA</i>	<i>1.83 x 1.68</i>	<i>= 3.07</i>
<i>BALC. AREA</i>	<i>3.66 x 1.71</i>	<i>= 6.26</i>

## RERA AREA TABLES



**Location:**  
Near Vijay cross road,  
Navrangpura, Ahmedabad

**Contact:**  
**9316619622**

**HEMENDRA B. DALAL**

KAMAL CORPORATION  
CIVIL ENGINEER  
DEVELOPER

LIC.NO.001DV08072710803  
A-501,24 CARAT RESIDENCY,NR.DARPAN CIRCLE,  
NARANPURA,AHMEDABAD-380014.

DEVELOPER

---

**DEEPKUMAR S. PANCHAL**

ENGINEER HIGH-RISE (B.E CIVIL)  
CIVIL ENGINEER

LIC.NO.001ERH8072710603  
PANCHAL,FALIYU,VADAZAPMA  
MALAV,GODHARA-389265

ENGINEER

---

**JAYESH D. DESAI**

SD-1 LIC NO. 001SE20022600349  
89, SWAMI AKHANDANAND SOCIETY,  
GHATLODIYA, AHMEDABAD

STRUCTURAL ENGINEER

---

**DEEPKUMAR S. PANCHAL**

CLERK OF WORKS GRADE-1 (B.E CIVIL)

LIC.NO.001CW08072710763  
PANCHAL,FALIYU,VADAZAPMA  
MALAV,GODHARA-389265

C.O.W.

---

**DEEPKUMAR S. PANCHAL**

SUPERVISOR GRADE-1 (B.E CIVIL)

LIC.NO.001SR08072711443  
PANCHAL,FALIYU,VADAZAPMA  
MALAV,GODHARA-389265

S.O.R(SUPERVISOR OF WORKS ON RECORD)

---