



ASOPALAV
APARTMENTS

2 & 3 BHK LUXURY LIVING

Site : Asopalav Apt. Near Vividhbharti Society, Behind National Handloom, Near Bhavsar Hostel, 132 Feet Ring Road, Wadaj, Ahmedabad-380013



ASOPALAV APARTMENTS

The Life Style Of Ultimate Living
Asopalav Apartments are the reflection of who you are.
It is brilliantly made keeping you in mind to give you
and your loved ones the best living. Experience ever through
our intelligent planning and lifestyle oriented design



30' WIDE ROAD

EXIT

WAY TO
BASEMENT

A-118

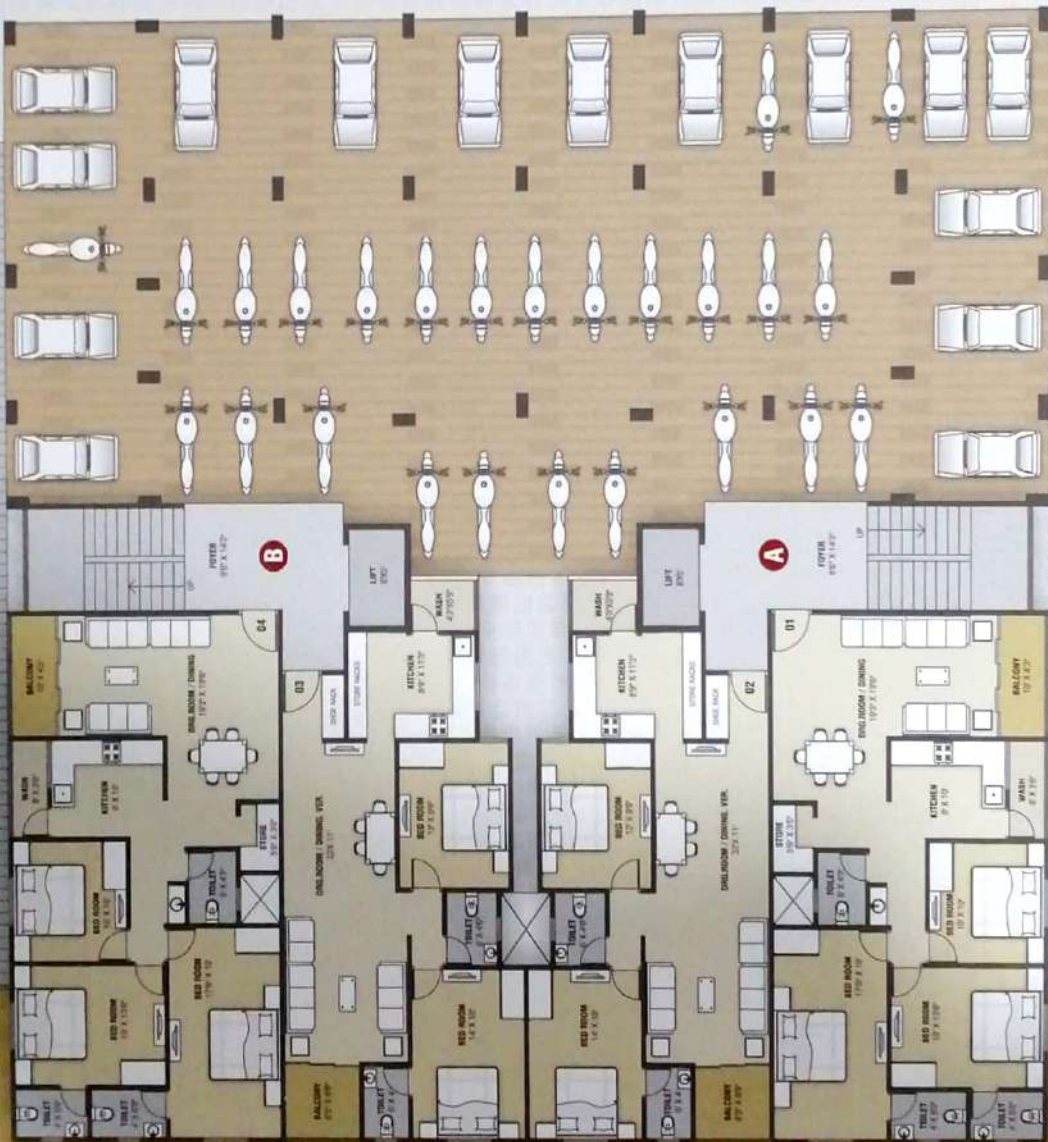
A-118

G-98

G-98



GROUND FLOOR PLAN



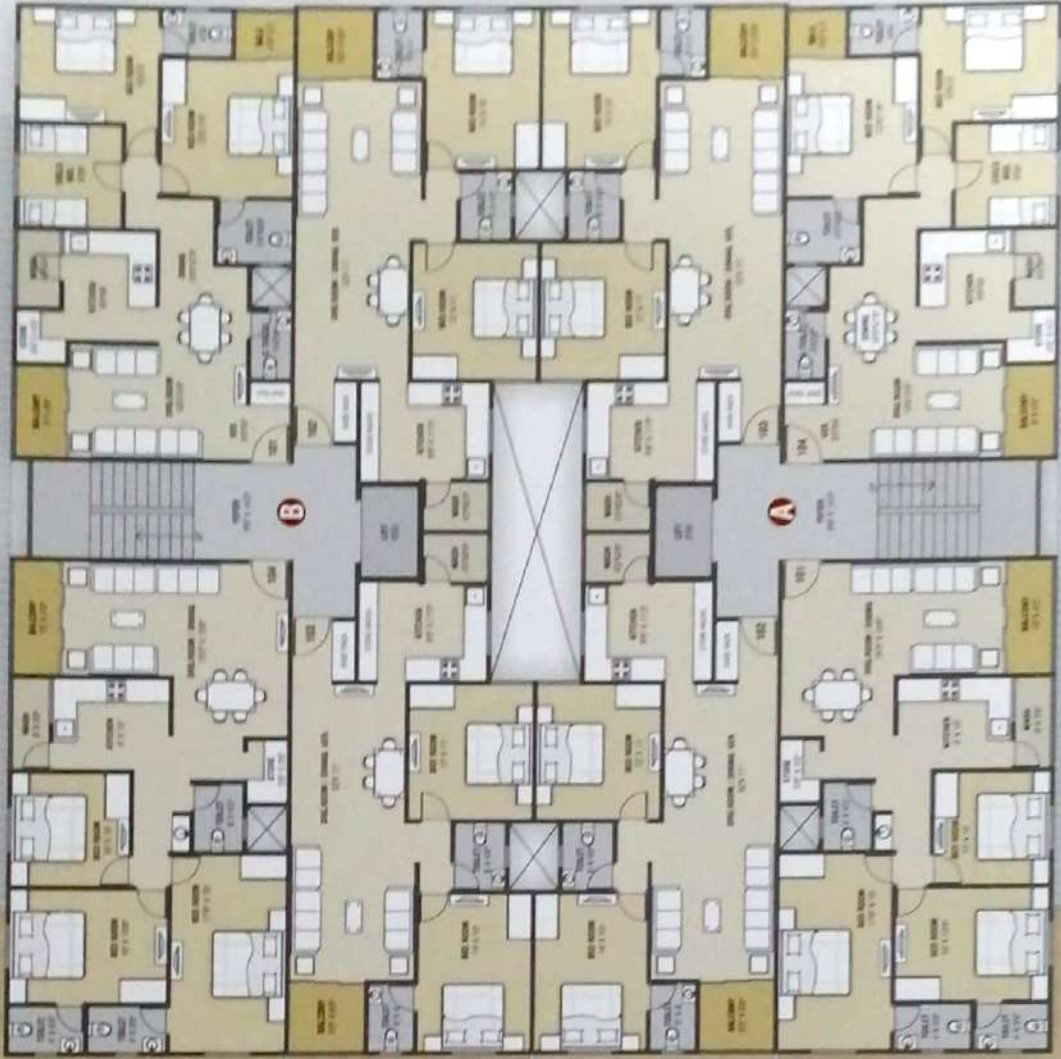
30' WIDE ROAD

C-108

B-98

B-98

C-108



A-118

B-98

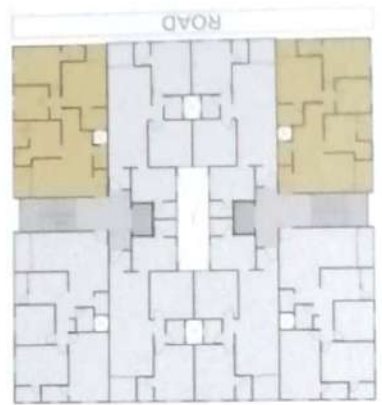
B-98

A-118

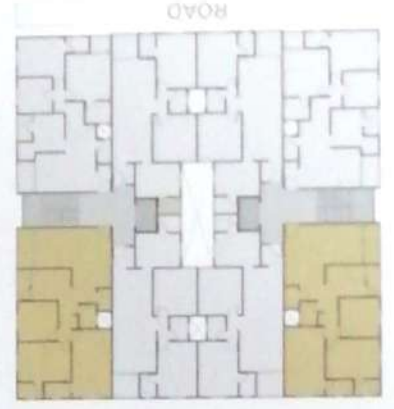
ASOPALAV
APARTMENTS



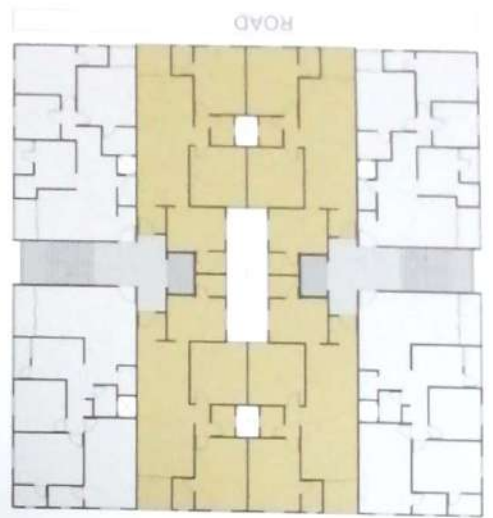
4th
FLOOR PLAN



3 BHK
Option C-108



3 BHK
Option A-118



2 BHK
Option B-98

ASOPALAV APARTMENTS



ASOPALAV





Specification

Structure : R.C.C. Frame Structure Earthquake Design

Plaster : Internal Mala plaster with putty finish and external double coat tippani plaster with acrylic paint.

Flooring : Vitrified tiles flooring in drawing, dining, kitchen & all other bedrooms.

Kitchen : S.S Sink & Sandwich Platform with granite top & Glazed tiles dedo up to lintel level.

Door & Window : Decorative main entrance door with good quality fitting and all other doors with wooden framed flush door. All windows will be powder coated aluminium section

Toilets : Color glazed tiles up to lintel level dedo european type W.C. in toilets. Standard quality C.P.Fittings & sanitary ware.

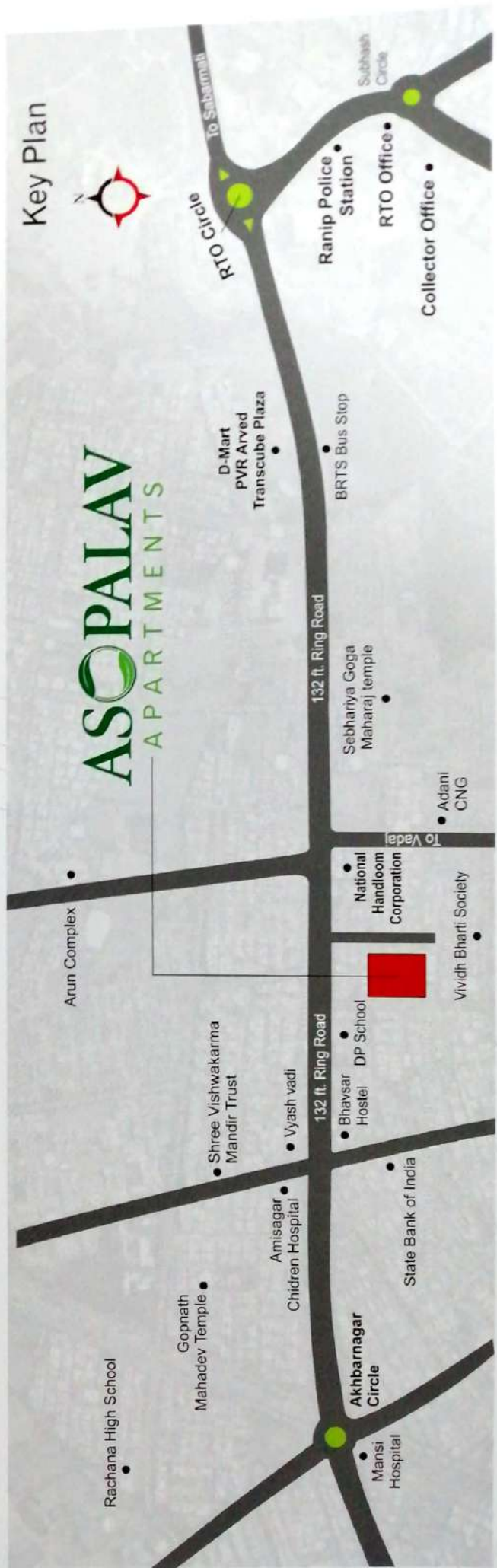
Electrification : Three phase concealed copper wiring with basic minimum number of points in all rooms.

Rules and Regulations

- Developer reserves all rights for any change in plans, specifications or in the whole scheme and such changes shall be final and abide by all members as per rules and regulations of RERA.
- All legal charges (AEC, AMC Charges, Stamp, Registration charges, Service tax Vat & GST, All Taxes, Levies Including liaison charges what so ever) shall be borne by the member additionally.
- No external changes are permissible, only internal changes may be allowed with prior permission and member will have to bear the cost, as per AMC norms.
- This brochure is indicative and can not be considered as the legal document.



ASOPALAV APARTMENTS



ARCHITECT

ANTRIT ARCHITECT
AHMEDABAD

PROJECT CONSULTANTS



Satej Developers pvt. ltd.

Ph.: 98242 32727

PROJECT ASSOCIATE



96876 13052 | 97222 29999

99989 18755

602, Shivalik High Street,
B/h Keshav Baug Party Plot, Mansi Cross Roads,
Satellite, Ahmedabad -380015