



Please Scan This QR Code to
Visit Our Website

www.casaamplo.com

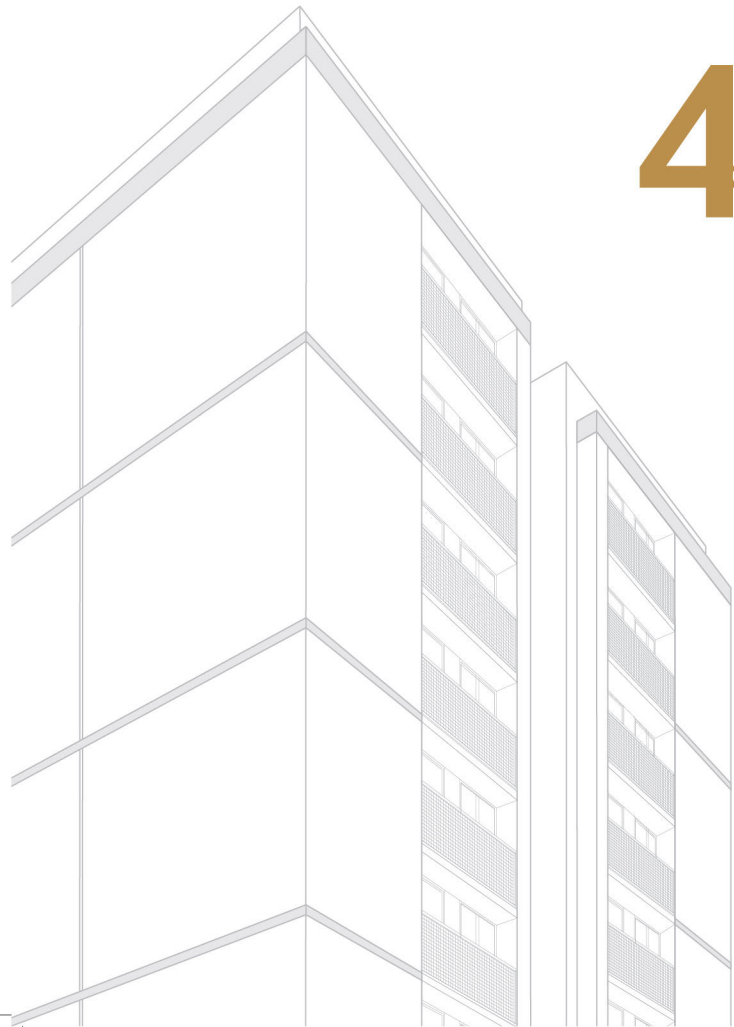
Shree Praveen Office - 91 98794 44445



CASA AMPLIO



WHERE DREAM COMES TRUE



4BHK
ULTRA LUXURIOUS HOMES



A UNIQUE DESIGN PERSPECTIVE,
A UNIQUE HOME CONCEPT

35 SINCE
YEARS

FEET THE COMFORT



The experience of Casa Amplio is above and beyond your imagination. Casa Amplio is located in an exclusive zone in the city where only residential buildings find a home. The location will allow residents to enjoy an incredible peace that can only be gained in an environment filled with comfort and nature. This is a home unlike another: exceptional, beautiful, comfortable. Luxurious.






CASA AMPLIO



CASA AMPLIO

EXPERIENCE AN
EXCEPTIONAL
LIFESTYLE LIVE LIKE
CASA AMPLIO

The Casa Amplio life is the embodiment of a modern, luxury lifestyle. Each aspect of the homes built here has been designed with immense care and ease. We pride ourselves on offering a lifestyle above everyone else. The Casa Amplio life is one that consists of luxury amidst the lap of nature. Surround yourself with only the best.





CASA AMPLIO

enjoying superior status...

Experience the bountiful presence of nature everyday. Sheltered by verdant foliage and soothing aqua elements, a novel that is designated to pulsate!

Nature's elements crafted to perfection.

We want to celebrate our affiliation with Luxury Real Estate with our clients and customers, as well as our friends and neighbours, all of whom have been supportive and instrumental in our success.





CREATING MOMENTS
FOR A LIFETIME



A home is designed with perfection when each member of the family is happy. The design is exceptional in its appeal to every age group because here, everyone has a place for themselves.

A LEISURELY LIFESTYLE
FOR THE MODERN PERSON



CASA AMPLIO



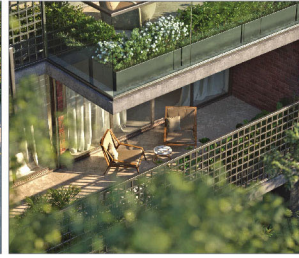
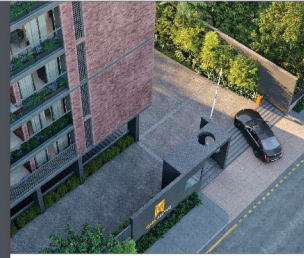
The Casa Amplio lifestyle is one that surpasses the highest standards of living. Each corner, each piece of furniture and each plant is placed with exceptional skill to make this place a lovely home.



Beyond this gateway...
an elegant
life unfolds



Experience the splendour in your *Life...*



THE
LIFESTYLE
IS FOREVER



THE WORLD OUTSIDE WITHIN YOUR HOME

Each moment at home is precious and it should be spent in a place that makes you happy. So spend it at Casa Amplio, where life will take on a new meaning.





EXPERIENCE YOUR PERSONAL OASIS

A relaxed life should be free of worries but filled with comforts that liven up your life. A home that offer all this and more is hard to resist





THE ART OF LUXURY LIVING
 Each corner in CASA AMPLIO is designed to feel like your own, and to feel like home. Excluding warmth and love, the design and layout of each home in this project will create the perfect living atmosphere for you and your family.

1ST BASEMENT PLAN



2nd BASEMENT PLAN



LIVING WITH A PIECE OF REAL NATURE

Natural beauty is often amiss in urban landscapes. However, we incorporate nature into each aspect of the design, which has resulted in homes that combine urban and natural landscapes with ease.



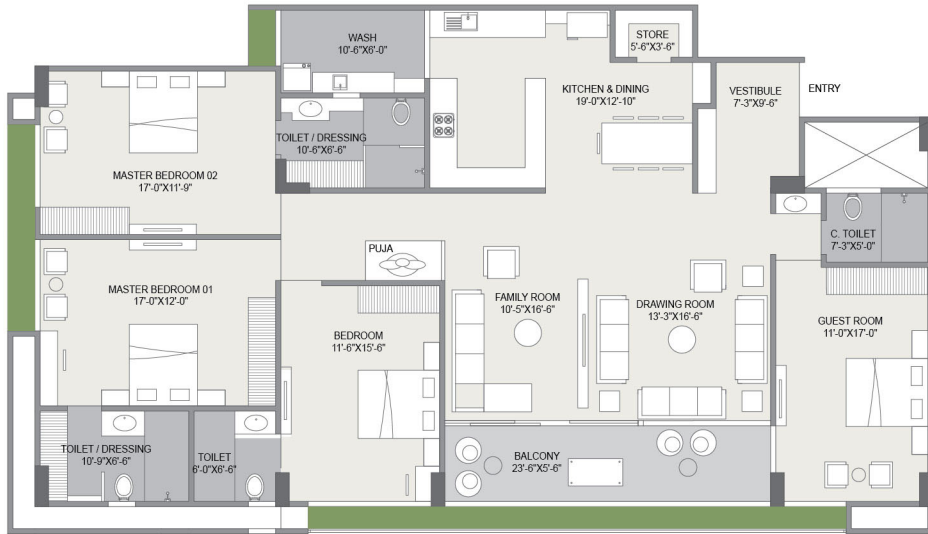
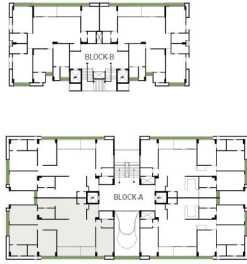


GROUND Floor Plan

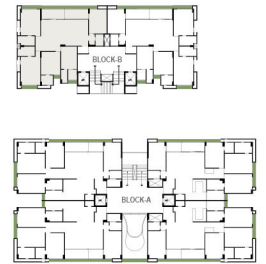


FIRST Floor Plan

FIRST FLOOR
UNIT PLAN **Block A**



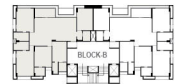
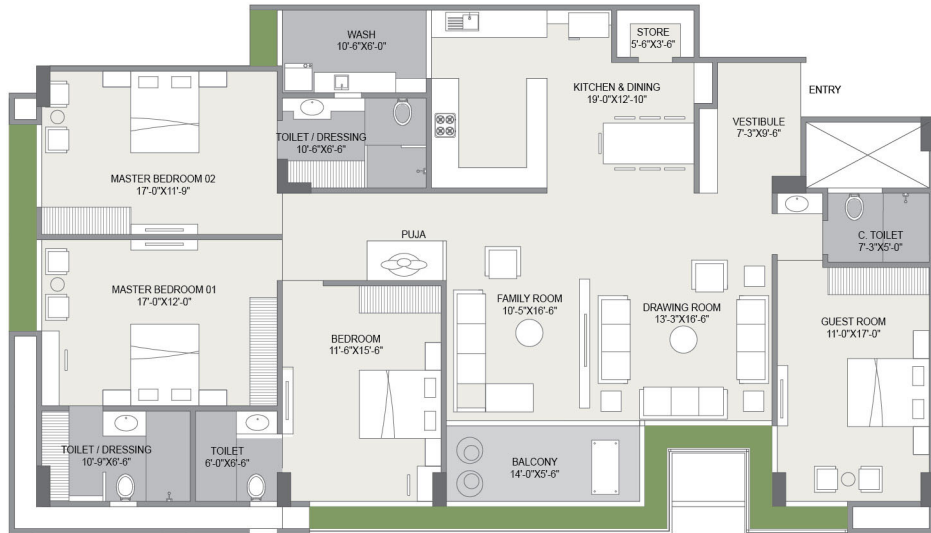
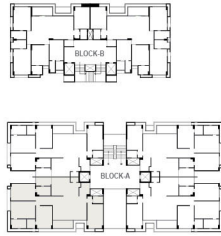
FIRST FLOOR
UNIT PLAN **Block B**



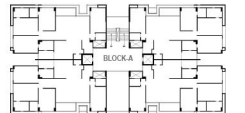


TYPICAL Floor Plan

TYPICAL FLOOR UNIT PLAN **Block A**



TYPICAL FLOOR UNIT PLAN **Block B**



SALIENT FEATURES

Just the right amount of homes within the residential complex means there isn't a crowd but there are just enough people to establish a loving, close-knit community in Casa Amplio. Inside and outside, these homes are beautiful and designed to please your eyes.



Landscape Garden



Grand entry foyer with seating lounge



24*7 security & CCTV surveillance



Intercom facility



High-speed elevators with secure access



Allotted car parking with stack provision



Power backup for common areas



Water heating system with smart meter



Water softener & smart water meter



Fire safety



Car wash area



Vehicle free zone



Free Wi-Fi zone



School pick-up zone



Architectural Rooftop Terrace

PREMIUM AMENITIES



Multi-purpose Hall



Home Theatre



Kids play Area



Indoor Games



Splash Pool



Toddler Room



Banquet Hall



Conference Room



Gymnasium



Gazebo

STANDARD SPECIFICATION

NATURE OF PROJECT : 4BHK PREMIUM HOMES, THALTEJ, AHMEDABAD

FACILITIES	BRAND/SPECIFICATION	NOTE	FACILITIES	BRAND/SPECIFICATION	NOTE
CP Fitting	Kohler, Grohe or Equivalent	-	Door	Europa, Godrej or Equivalent Hardware	<ul style="list-style-type: none"> Good Quality Flush Door with Granite/ Wooden Frame Mortise / Tabular Lock on all Internal Doors
Sanitary Wares	Kohler, Duravit or Equivalent	Highest Quality of Finishing	Paint & Finishes	Asian Paints, Berger, ICI or Equivalent	<ul style="list-style-type: none"> Asian / Berger Bits wall Putty Stucco Texture on External Facade
Plumbing	Astral, Finolex or Equivalent	<ul style="list-style-type: none"> CPVC Pipe for Hot Water UPVC Pipe for Normal Water Noise Reducing Pipe for Waste Water Suspended Plumbing for Easy Maintenance Highest Quality Product for Ancillary Plumbing Fittings 	Home Automation	-	<ul style="list-style-type: none"> Video Door Phone with Colour Screen & Intercom Facility Main Door with Digital Locks Vale, CP Plus, Godrej or Equivalent CCTV Cameras in Common Areas
Pressure Pump	-	Pressurized Water Supply In Every Home	Kitchen	Modular Kitchen	<ul style="list-style-type: none"> Granite Platform, Gas Hob, Chimney SS / FRG Sink, Provision for hot water, RO Point in Kitchen, Full Height Store with Shelf of Kota Stone
Electric	SSK, MK, Schneider Electric, RR Kabel or Equivalent	<ul style="list-style-type: none"> 6 Sq. mm Apfy Cable with Power Carrying Capacity - 20 Kw. Allocated Power - 7 Kw Three Phase Power Per Home from Torrent Power Limited Chemical Earthing for Each Home Wires : Darshan, Avocab or Equivalent 	Flooring	-	<ul style="list-style-type: none"> Drawing / Dining Room, Passages and Kitchen Italian Marble Master Bedroom - Wooden Other Rooms - Vitrified Tiles Bathrooms - Vitrified/Ceramic Tiles Balcony - Rastic Vitrified Tiles Wash - Granite Floor with Service Platform
HVAC	VRV A.C. System	<ul style="list-style-type: none"> Dedicated space for outdoor units. Provision of Duct Outlet for Kitchen Chimney 	Passage & Common Areas	-	<ul style="list-style-type: none"> Decorative Passage on Each floor Granite / Finished Kota Stone / Marble Stair Case with Hand Railing Entrance Lounge Area
MS Grill & Fabrication	Asian Tubes or Equivalent	-	Parking	-	<ul style="list-style-type: none"> Kota Stone or Parking Tiles Each Columns will be Highlighted and Edges will be Protected 2 Car Parking Per Unit, 3rd Car on Availability Provision for Multilevel Parking at Designated Parking Base
Windows	Banco, Nalco, Ais, Saint-Gobain or Equivalent	<ul style="list-style-type: none"> Domal or Equivalent Section with Thickness of 1.5 mm with 4 mm Toughen D.G.U. Window Branded Fixtures for Locks & Joinery 	Elevator	Kone, Schindler, Thyssenkrupp or Equivalent	<ul style="list-style-type: none"> 2 Elevators in Each Block, 10 Passenger Automatic Elevator with Intercom Facility
Gas Line & Gas Geyser	Adani	<ul style="list-style-type: none"> Adani Gas Line Up To Wash Area Provision for Gas Geyser and Centralized Hot Water Supply Line to Every Bathroom 	Telephone / Internet / Wi-Fi / DTH	Airtel Digital TV, Tata SKY, GTPL or Equivalent	<ul style="list-style-type: none"> Single Service Provider to provide facility of DTH, Internet, Wi-Fi, Intercom Etc.



Education Center
0.5 km



Hotel
0.9 km



Restaurant
0.5 km



Hospital
1.8 km



Bank
0.5 km



Temple
0.5 km



ATM
0.5 km



Shopping
0.8 km

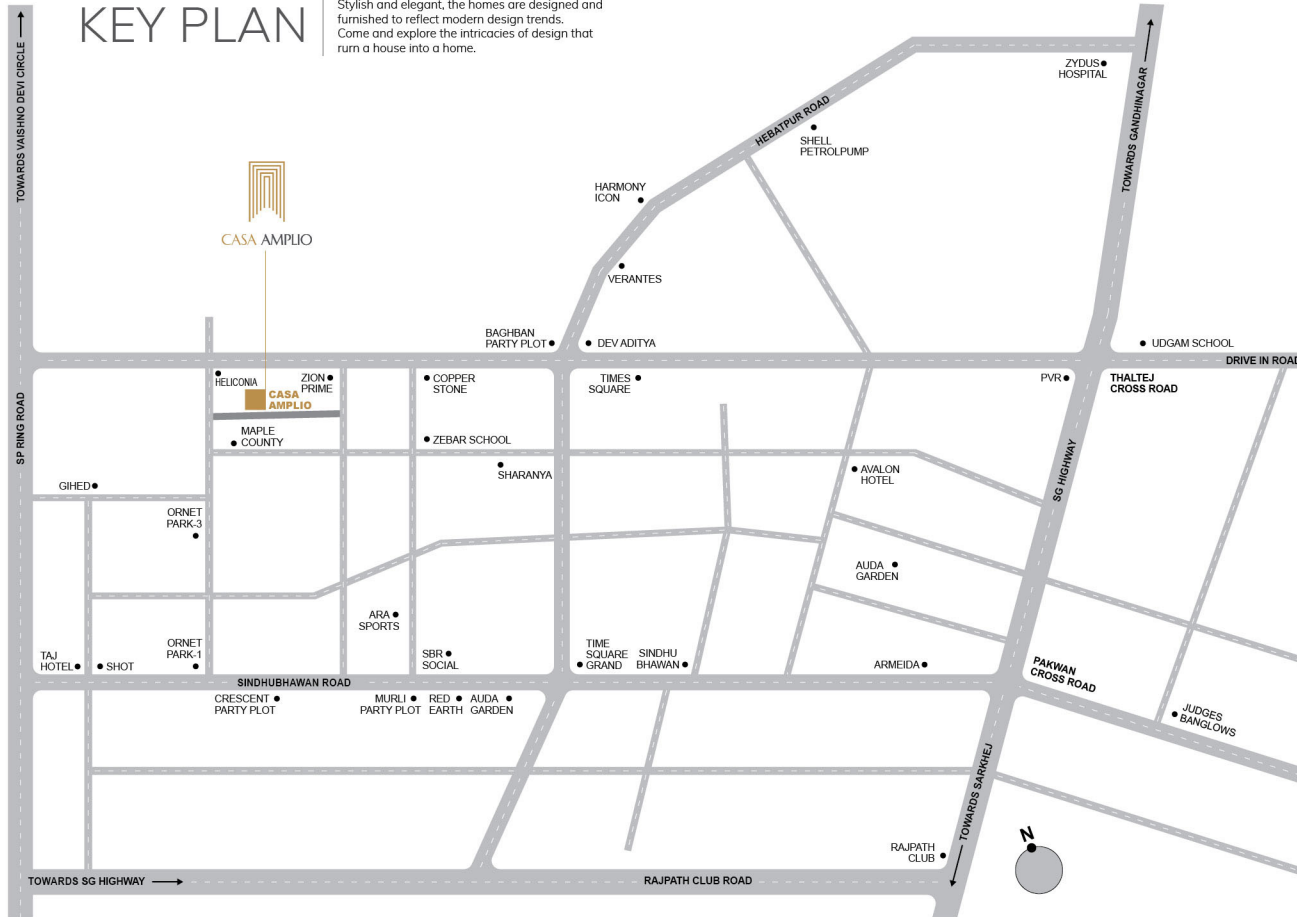


Metro Station
1.0 km



KEY PLAN

Stylish and elegant, the homes are designed and furnished to reflect modern design trends. Come and explore the intricacies of design that turn a house into a home.



Developers



E-mail : info@casaamplio.com
Contact No. : 78783 44444

Site Address :



CASA AMPLIO

B/H Heliconia App., Thaltej - Shilaj Road,
Thaltej, Ahmedabad - 380 059.

Architect



Structure

NISHTHA CONSULTANT

Legal Disclaimer

All Furniture / Object shown in the plan are for presentation & understanding purpose only. By no means, it will form apart of final deliverable product. All the elements objects, treatments, equipment & color scheme are artist's impression & purely for presentation purpose. By no means it will form apart of the amenities, features or specification of our final product.

NOTE: All rights for alteration / modification & development in designer specifications by architects & / or developer shall be binding to all the members. • B.U.C. (Building use certificate) as pergovt. rules. The title is clear for loan purpose. This brochure is for reference purpose only. By no means, it will form part of any legal contract. Stamp duty, Registration charges, Legal charges, PGVCL/AUDA / GSPC charges, Society maintenance deposit, etc. shall be borne by the purchaser. • TDS, GST & or any other taxes levied in future will be borne by the purchaser as applicable. • Any additional charges or duties levied by the government / Local Authorities during or after completion of the scheme shall be borne by the purchaser. • In the interest of continual developments in design & quality of construction, the developer reserves all rights to make any changes in the scheme including and not limited to technical specifications, planning, layout & all purchasers shall abide by such changes. • Changes / alteration of any nature including elevation, exterior color scheme, balcony grill or any other changes affecting the overall design concept & outlook of the scheme are strictly NOT PERMITTED during or after the completion of the scheme. • Any RCC member (Beam, Column, Slab) must not be damaged during your interior work. • Low-voltage cables such as telephone, TV and internet cable shall be strictly laid as per consultant's service drawing with prior consent of Developer / Builder's office. No wire / cables / conduits units shall be laid or installed such that they form hanging formation on the building exterior or interior faces. • Common passages / Landscaped areas are not allowed to be used for personal purpose. • Purchasers are compulsory member of AOP • Builders have rights of changes as per FSI rule.