

DEVELOPER :



Site Address :

Dev Auram Sky, Nr. Dev auram exotica,
Bh. aryan city, vandemataram-Gota road
Ahmedabad, 382 470

Contact : +91 98980 93162 | 98981 58419

DEVAURAM
·Sky·

3 & 4 BHK
LAVISH ARENA

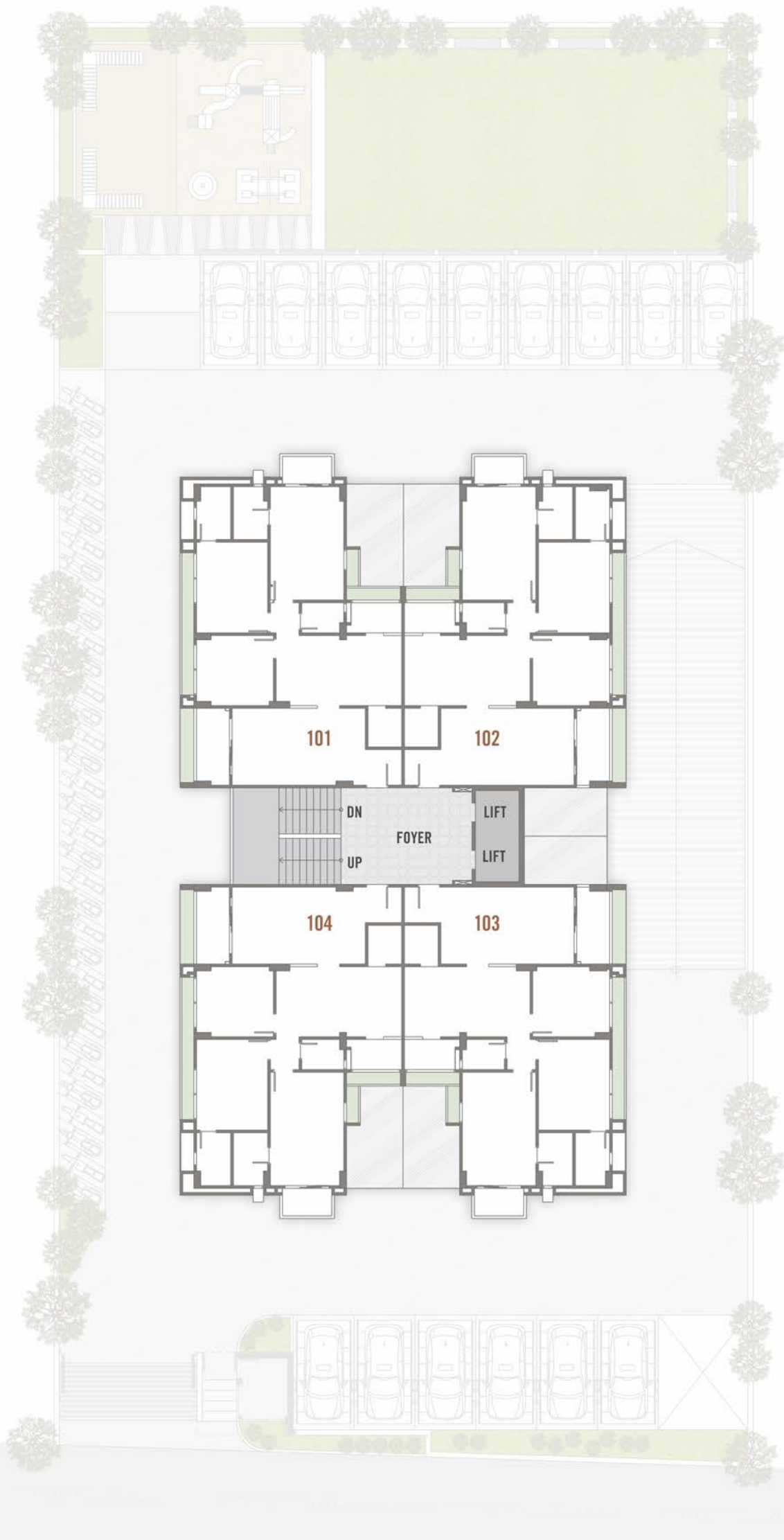
A perfect ode to harmony in life!



LAYOUT PLAN





TYPICAL FLOOR PLAN



14th FLOOR PLAN

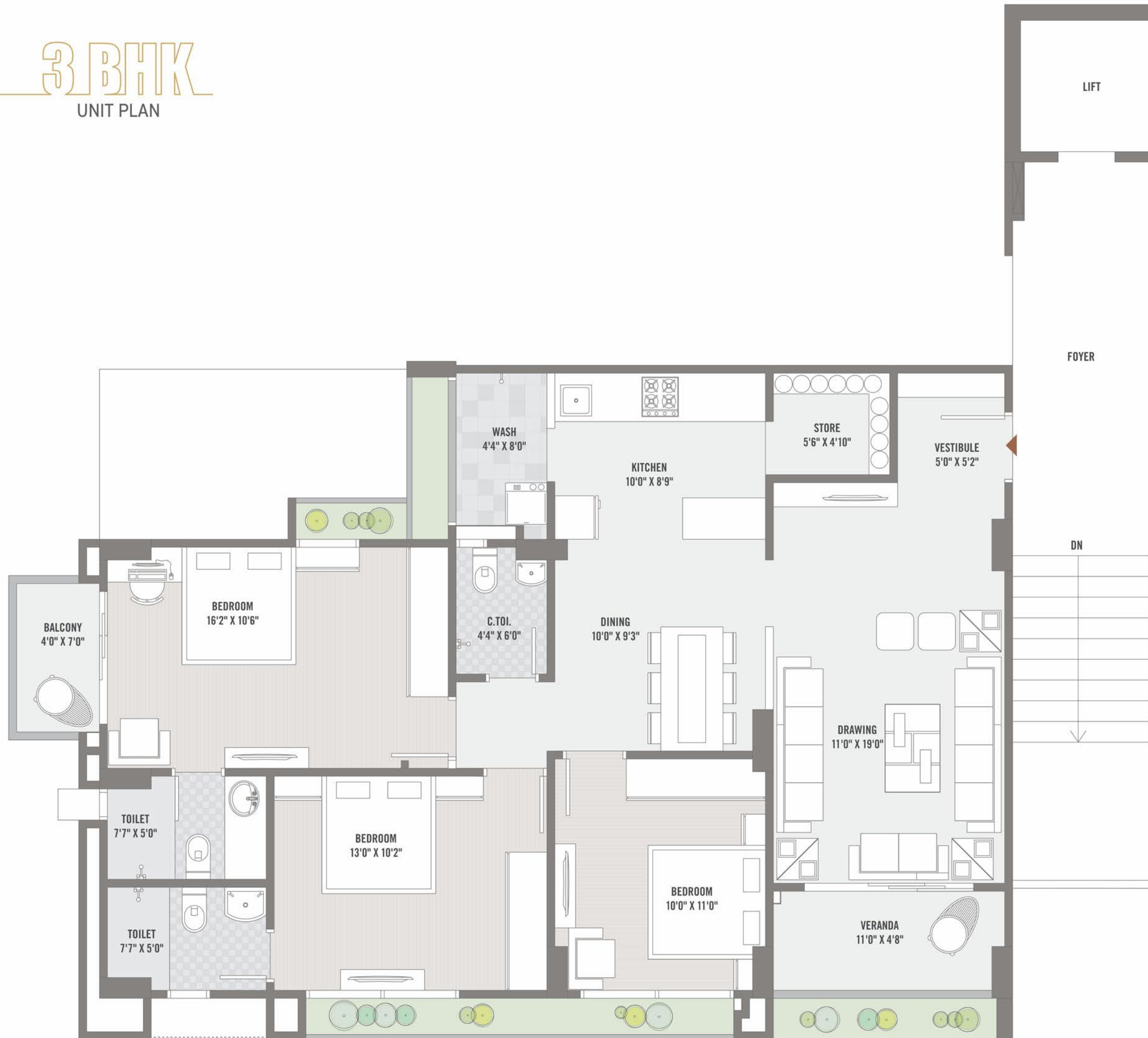


-  Entrance gate
-  CCTV camera
-  24 x 7 Security
-  Pick up zone
-  Stack parking
-  Senior citizen set out
-  Children play area
-  24 Hrs Water supply
-  Intercom
-  Garden
-  Power Back-up Generator
-  Club house
-  Solar System
-  Fire safety
-  A/C gymnasium

Dev auram sky, does not leave any space for issues and has you covered in what you need

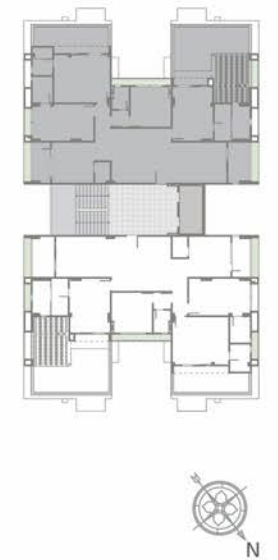
3 BHK

UNIT PLAN



4BHK

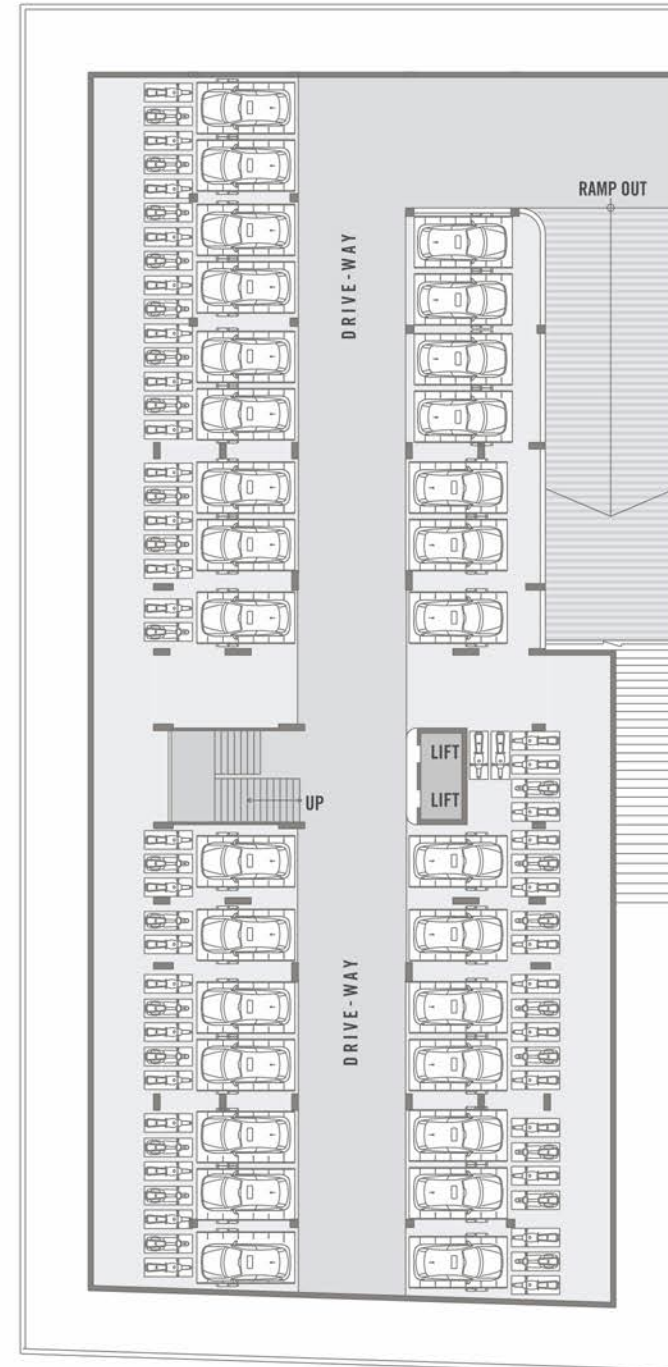
UNIT PLAN





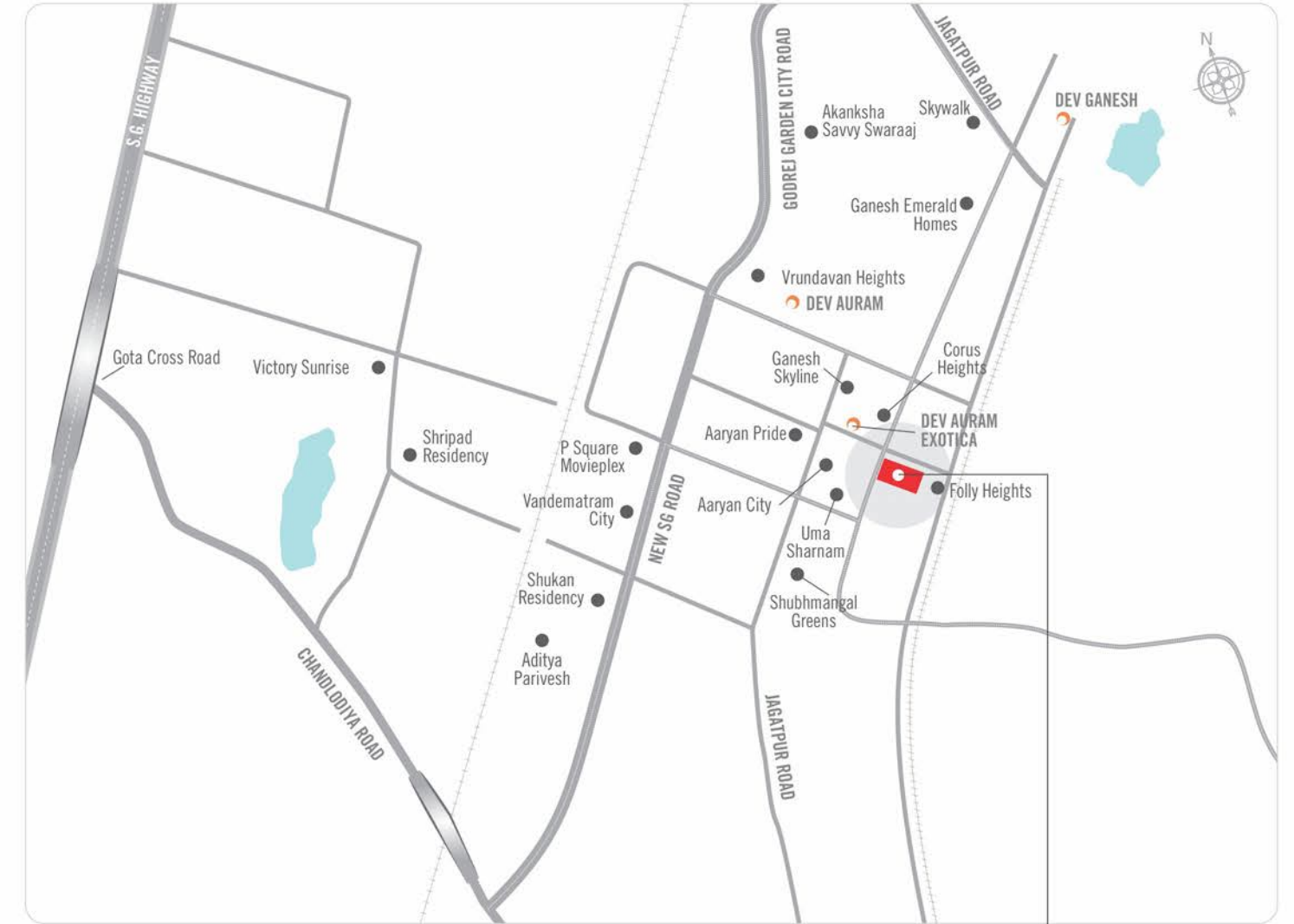
SPECIFICATION

RCC :	Quality controlled earthquake resistant, RCC frame structure.
FLOORING :	Vitrified flooring in entire apartment.
PAINT :	Internal walls are putty finish. External walls are weather shield acrylic emulsion paint.
DOORS :	Decorative main door & other are flush doors
KITCHEN :	Fully glazed polished granite platform with SS sink. Decorative tiles dado upto lintel level
BATHROOMS :	Wall cladding with designer series tiles & branded sanitary wares.
PLUMBING :	CPVC/UPVC hot and cold water supply pipes.
ELECTRICAL :	Three phase concealed electric copper wiring. Premium modular switches. ISI wires MCB/ELCB A/C point in each bedroom with copper piping.
LIFT :	2 Fully automatic high speed elevators.
SECURITY :	24X7 security with CCTV surveillance
TERRACE :	China mosaic with required water proofing on terrace for cool temperature.



BASEMENT PLAN 

LOCATION MAP



DEVELOPER :



ARCHITECT :



STRUCTURE :

**BIPIN
AGARWAL**



Site Address :
Dev Auram Sky, Nr. Dev auram exotica,
Bh. aryan city, vandemataram-Gota road
Ahmedabad, 382 470

Contact : +91 98980 93162 | 98981 58419

Email : deventerprise252@gmail.com
Web : www.devauram.com

TERMS AND CONDITIONS

Stamp duty, registration charges, legal documentation charges, B.U. GST, AMC/AUDA charges, maintenance deposits and TORRENT charges, Narmada water charges, gas pipeline charges shall be borne by the member separately. | Any Additional charges or duties levied by the Govt. / local authorities during or after the completion of the scheme will be borne by the member. | The project consultant / developer reserve all then rights to make changes to design or specifications of the project. | This brochure is not to be treated as a part of legal documents. It is meant for easy display and general information. | Any modification effecting elevation won't be allowed to be done by members of the society.

