



REDEFINE LIFE WITH NATURE!

 TRYKSHA™

east™
ebony

BY HARSIDDH INFRA

PROPRIETORSHIP OF
DHARMENRA PATEL

3 BHK FINE LIVING

CM DESIGNS +91 89800 50697

Homes are not made with four walls.
Homes are made with the moments that we seek to have in them.
Moments that are



S O U L F U L

S E R E N E



Merely spacious and luxurious homes are now, needs of the past. What we want our homes to be is more than just luxury. We want our children to grow up in an environment that is natural and beneficial while experiencing the perfect childhood. We want our parents to have a serene evening with the soulful voice of chirping birds and the sound of the wind, whispering through the trees. We want a satisfying life with a complete and content living experience, not just with amenities and luxuries, but also with moments nourished in the lap of nature.



S A T I S F Y I N G

east™ ebony

BY TRYKSHA

Tryksha brings to you, a living experience designed beyond the boundaries of mere luxury, at **East Ebony**. A home that is not just four walls and plumbing, but beautiful novels that come alive each day and make you feel content and happy. These homes are weaved with nature infused elements and pooled with design aesthetics and amenities.

What is the need of the hour? Its privacy and getting in touch with nature. **East Ebony** delivers the same with our unique design model where all points of ventilation in terms of air and light are open, as no wall is common between any two flats. Feel the nature and experience fine living with utmost privacy at **East Ebony**.



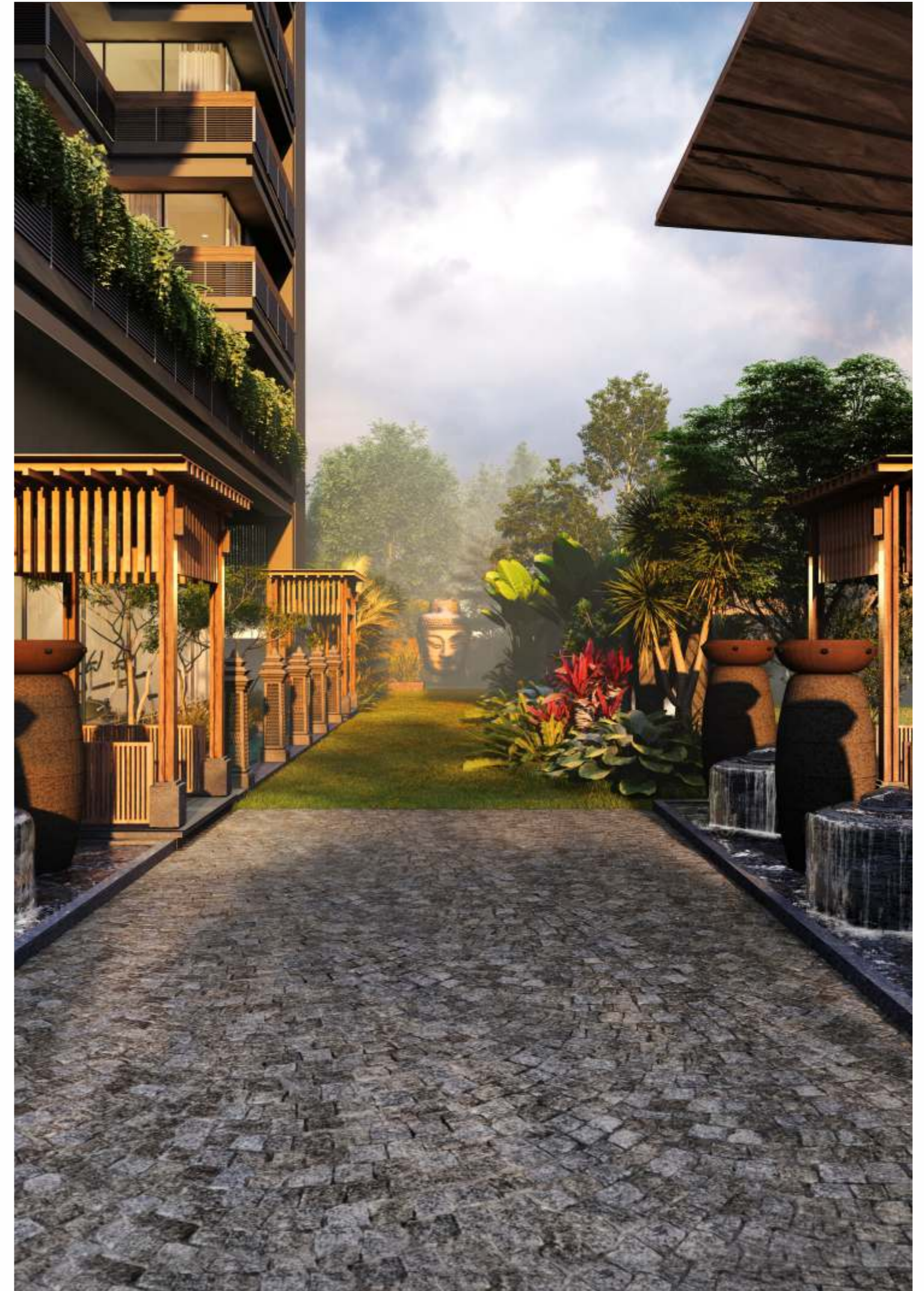
In this walk of life, live in the lap of

NATURE



Our homes are where we unwind. Where we let our guards down and seek peace, calmness and love to forget about a life outside the door that is fast, unforgiving and concrete. Our current lifestyle is around concrete walls, screens and materialistic things. But each human seeks peace and a connection with nature outside the world of screens and a busy life.

We bring this connection to you at your homes, the only places you unwind. In this walk of life, we want your living experience to be rejuvenating and relaxing amidst nature, drowned in the lap of its beauty. Come live with us...



Exterior photography depicts East Ebony and is indicative only.





Exterior photography depicts East Ebony and is indicative only.

Come...live with

NATURE!



Green spaces stitched into a lavish and lush living experience, just for you.



Exterior photography depicts East Ebony and is indicative only.



Don't just live, come ALIVE
Amidst natural greens, blooming flowers and the warmth of a perfect home.



SOOTHING



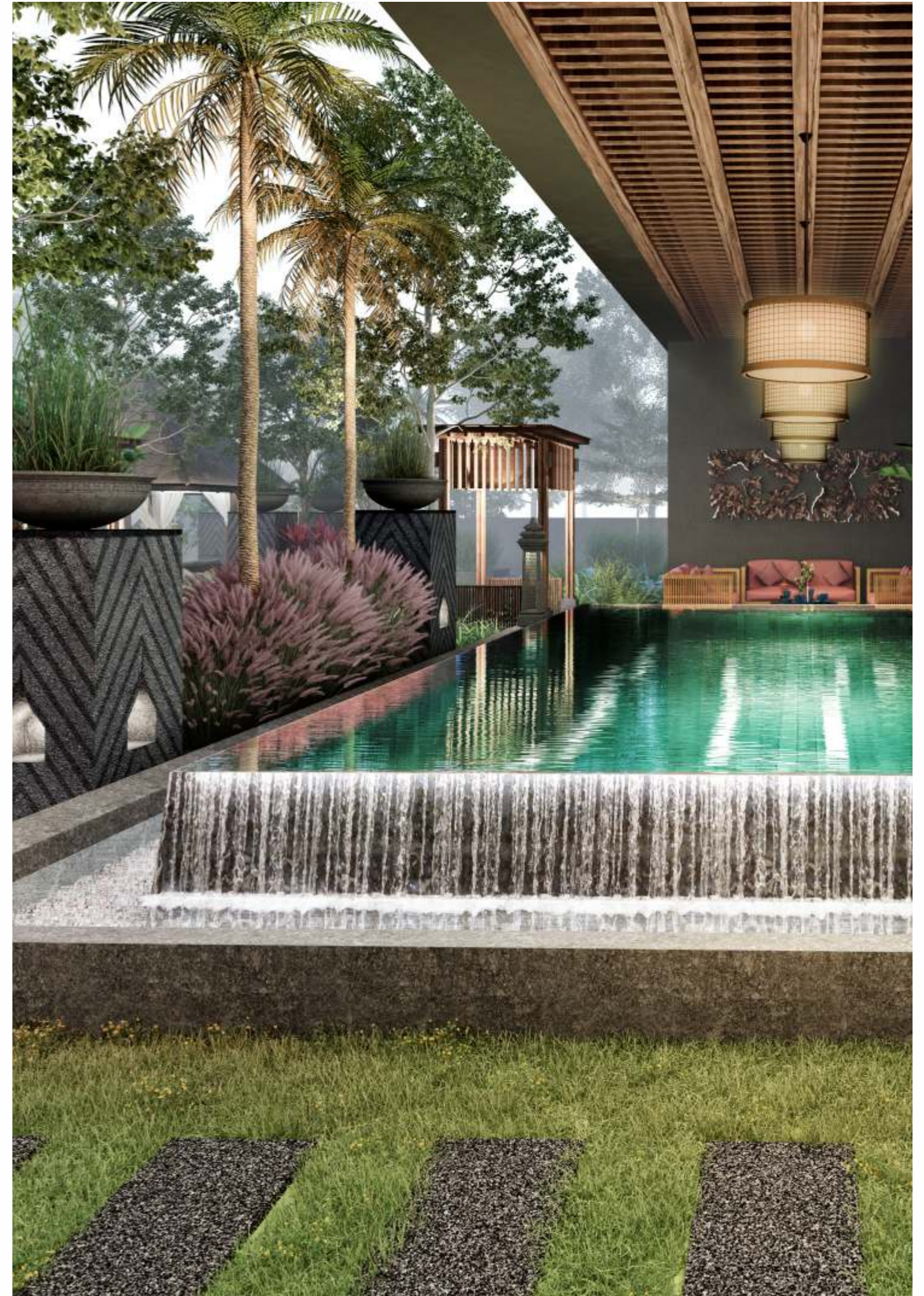
HEALING



REJUVENATING

A home where nature becomes a part of your family.

Each day of life at **East Ebony** will be soothing and relaxing when you feel the cool breeze within your hair after a long day at work. Each day will be a healing experience with all the freshness and greenery around you that are natural healers. Each day will invigorate your soul and set you free. Experience the real quality of life at **East Ebony**, where every day is therapeutic.



Exterior photography depicts East Ebony and is indicative only.





Exterior photography depicts East Ebony and is indicative only.

Joy of living blissfully encased in

NATURE,



cocooned within your home

3 BHK FINE LIVING

east™
ebony
BY TRYKSHA



Exterior photography depicts East Ebony and is indicative only.



A M E N I T I E S



Tryksha brings you premium **3 BHK luxury apartments** as close to nature as possible with amenities that don't just make your life easier but add the values of community and togetherness while keeping your spirits soaring. Experience affection, unity and companionship while maintaining privacy with our uniquely designed homes at **East Ebony**.

- | | |
|---|--|
|  Library |  Infinity pool |
|  Multipurpose hall |  Creche area for toddlers |
|  Solar power supply for common electricals |  GSPC gas connection |
|  11 Feet Floor Height |  Sand Pit Area |
|  Yoga and Meditation area |  Water Softener Plant |
|  Sun deck |  Gathering pavilion |
|  Gymnasium |  Indoor game zone |
|  Allotted parking spaces |  Fully access control system by ALBA URMET |





Views North



Views West



Views East



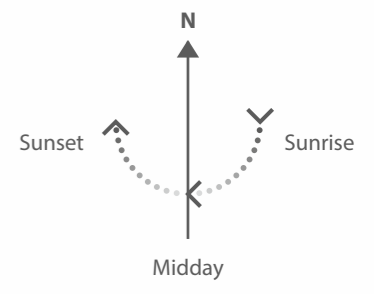
Views South

LANDSCAPE PLAN

- 01. ENTRY
- 02. LIFT
- 03. PARKING
- 04. MULTIPURPOSE HALL
- 05. LIBRARY
- 06. INFINITY POOL
- 07. CHANGING ROOM
- 08. GARDEN
- 09. STAGE
- 10. CRECH AREA
- 11. INDOOR GAMES
- 12. SANDPIT AREA
- 13. GYMNASIUM
- 14. EXIT

Planned around the natural topography of land, **East Ebony** offers you a life cocooned in natures lap with breathtaking views of plantations and natural fauna in a rejuvenating and tranquil environment.

With spacious car and two-wheeler parking and many nature boosting landscape amenities, **Tryksha** has designed a premium scheme that is not just built with the expertise of **team Tryksha** but also a panel of renowned and experienced consultants of architecture, structure design, plumbing and fire fighting, landscape etc. They have helped in making this scheme an A-one project. The world class landscape plan is **designed by DPA Design Studio** to bring you immaculate landscaping with elegant and serene homes that refresh life and your souls.



Views North

Views North

Views West

Views East

Views West

Views East

Views South

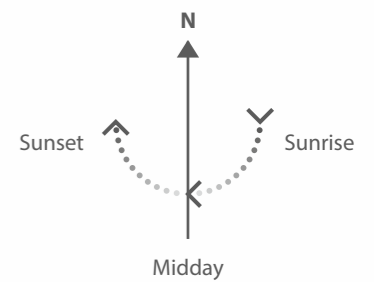
Views South

02 BLOCKS 11 LEVELS PER BLOCK 04 UNITS PER LEVEL

88 FINE HOMES

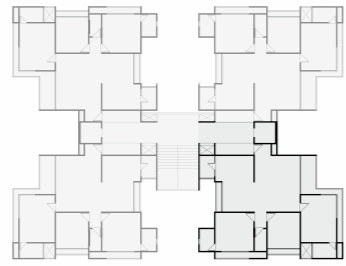


EVERY APARTMENT,
A CORNER APARTMENT.





B

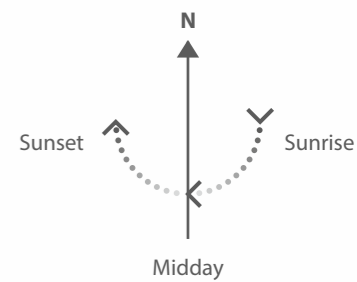
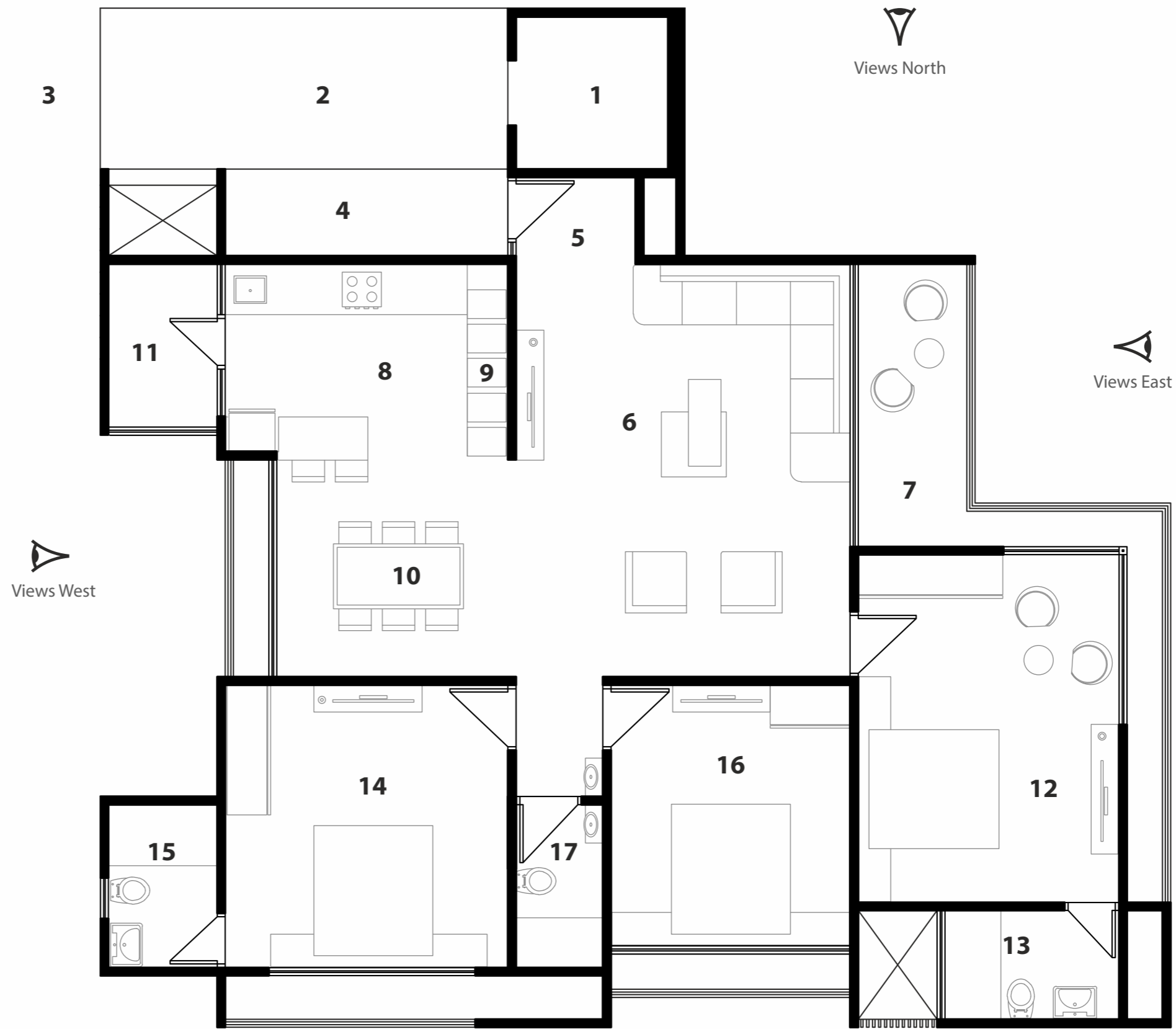


A

TYPICAL UNIT
PLAN



- 01 LIFT
- 02 7 FEET WIDE PASSAGE
- 03 FOYER : 10'-6" X 14'-0"
- 04 VERANDAH : 4'-0" X 12'-0"
- 05 WAITING : 4'-0" X 5'-6"
- 06 DRAWING ROOM : 19'-0" X 15'-4.1/2"
- 07 BALCONY : 13'-0" X 5'-0"
- 08 KITCHEN : 9'-0" X 11'-0"
- 09 STORE : 8'-6" X 2'-0"
- 10 DINING : 10'-0" X 11'-0"
- 11 WASH : 7'-6" X 5'-0"
- 12 MASTER BEDROOM : 16'-0" X 12'-0"
- 13 TOILET : 5'-0" X 8'-0"
- 14 BEDROOM-2 : 13'-0" X 13'-0"
- 15 TOILET : 7'-6" X 5'-0"
- 16 BEDROOM-3 : 12'-0" X 11'-0"
- 17 GUEST TOILET : 4'-0" X 7'-7.1/2"





FOUR SIDES OPEN

Every home has a beautiful view and privacy. Large windows allow ample light and air for ventilation

Each home is designed to give you the joy of

PEACEFUL



harmony



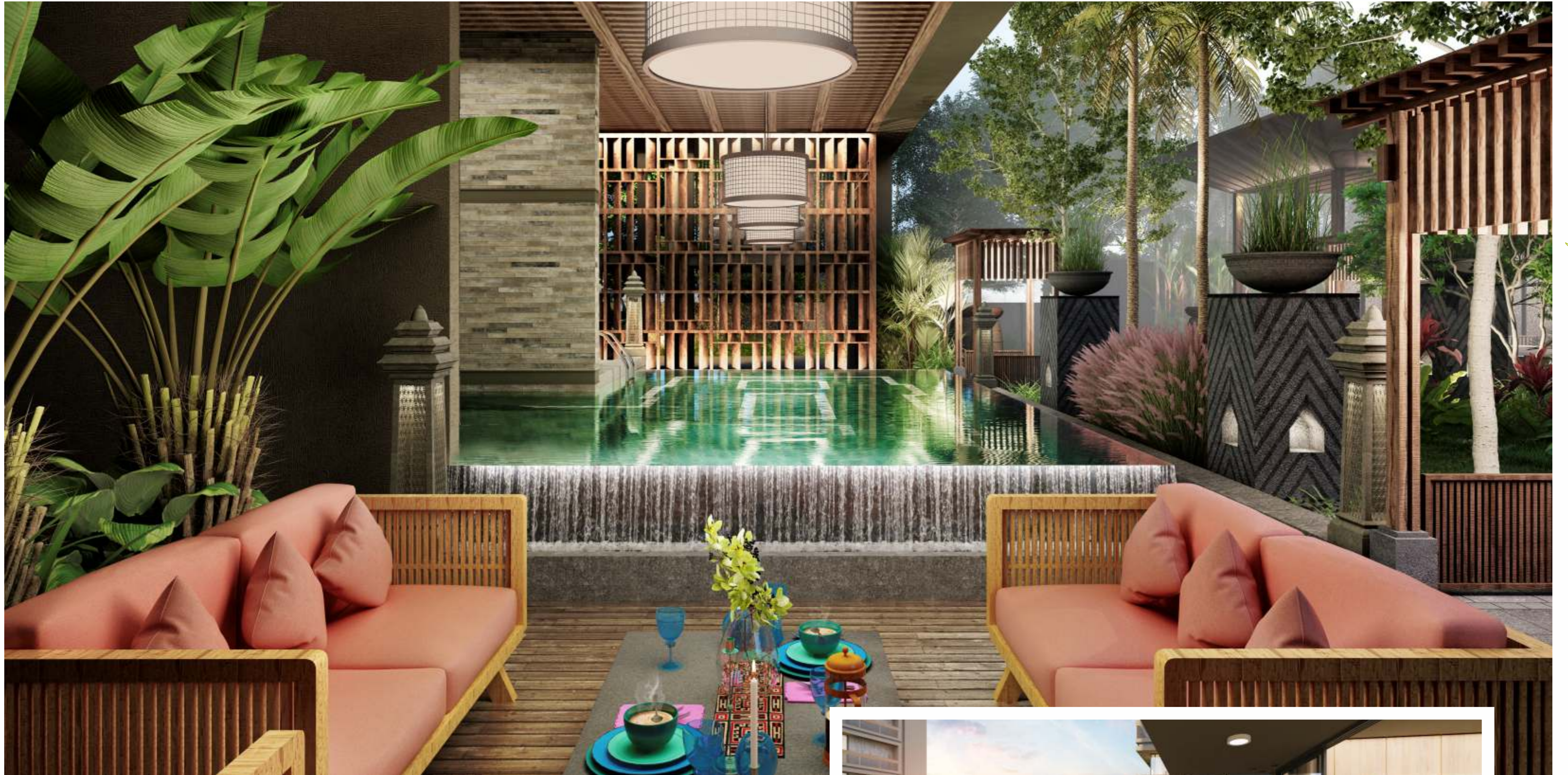


Interior photography depicts East Ebony and is indicative only.

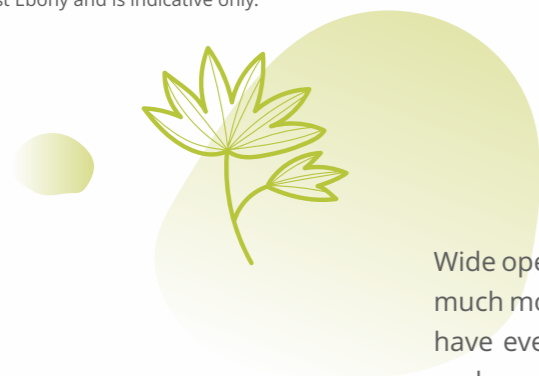
Interior photography depicts East Ebony and is indicative only.

Enjoy peace in SOLITUDE with your family





Exterior photography depicts East Ebony and is indicative only.



Wide open spaces to chase your dreams with quality fittings and much more, your **3 BHK home at East Ebony** will be all that you have ever imagined. The homes are spacious and planned in such a way that your choice of interiors can be easily executed with no hassle what so ever. Create your fairytale home at **East Ebony** and start weaving your future with **Tryksha**.



Exterior photography depicts East Ebony and is indicative only.

SPECIFICATION

STRUCTURE

- Earthquake resistant R.C.C. framed structure.

LOBBY

- Luxurious ground floor lobby with granite flooring.
- Upper floors lobby in Kota and Lift cladding in Granite/Designer Tiles.
- All lobby walls in plastic emulsion paint.

ELEVATOR

- High speed lift of MNC brand.

FLOORING

- Imported Tiles

KITCHEN

- Granite counter with SS sink.
- Ceramic tiles dado up to Beam bottom above granite counter.
- Kota flooring and Ceramic dado in the Utility & Store area.

PAINT FINISH

- External walls with textured finish.
- All railings in enamel paint.
- Mala plaster with putty finish in all internal walls.

DOORS

- Main door with decorative veneer polished.
- Other internal doors with wooden frames and enamel paint or laminate on both sides.
- Standard quality ironmongery and fittings for all doors.

TOILETS

- Anti-skid tiles for flooring.
- Quality sanitary and plumbing fixtures.
- Designer superior quality tiles on walls up to lintel level.

EXTERNAL DOORS AND WINDOWS

- Superior finish Aluminium sliding windows with granite revile.
- Double glazed glass in windows.

ELECTRICAL

- All electrical wiring is concealed with P V C fire -rated insulation wires and branded modular switches.
- Sufficient power outlets and light points provided.
- Intercom connection to security.
- Video Door-Phone Security.

PARKING

- Allotted parking spaces.



MATERIAL AND FIXTURES



NOTE: Your attention is drawn to the fact that it may not be possible to obtain the branded products as referred to the specification. In such cases, a similar alternative will be provided. Harsiddh Infra reserves the right to make these changes as required.

NOTE: Your attention is drawn to the fact that it may not be possible to obtain the branded products as referred to the specification. In such cases, a similar alternative will be provided. Harsiddh Infra reserves the right to make these changes as required.





LOCATION



Chandkheda has grown and developed beyond recognition with world class townships defining it as the fastest growing area in Ahmedabad. **East Ebony** lies here on New CG Road which is in close proximity to the Airport, Medical Centers, Schools, Malls, S.G highway and direct connectivity to the planned city of Gandhinagar. The beneficial location of **East Ebony** makes sure your time is valued and all that you need is right near you.





east™ ebony

BY TRYKSHA

PROJECT LOCATION

East Ebony BY TRYKSHA
Near Sona Sweet Homes, Opp. Park Avenue Apartments,
Beside Spring Valley Party Plot, New C.G. Road, Chandkheda,
Ahmedabad, Gujarat 382424.

CONTACT

M: +91 9727674977
E: sales@tryksha.co.in
W: www.tryksha.co.in

STRUCTURAL ENGINEER

AMEE ASSOCIATES | Jigar Shah

ARCHITECT

9TH STREET ARCHITECTS | Sourabh Verma

LANDSCAPE PLAN

DPA DESIGN STUDIO | Dhaval Patel

DISCLAIMER

- AMC/AUDA, GEB, Legal etc charges would be charged extra.
- Stamp Duty & Registration charges would be charged extra.
- GST or any such additional taxes would be charged extra.
- No external changes would be permitted.

SPECIAL NOTES

The developers reserve the rights to change or revise or make any modifications, additions, omissions or alterations in the scheme as a whole or any part there of or any details therein, at their sole discretion without any prior notice. Such changes would be binding to all the members. All the architectural and interior views in brochure are computer graphic simulated interpretation of the actual property. All the dimensions given are approximate and from unfinished surfaces. This brochure is just for an easy presentation of the project and should not be treated as a legal document. Additional details as per attached fact sheet herewith. This Brochure supersedes all the previous marketing materials or brochures.



PROJECT DEVELOPERS

 TRYKSHA™

 HARSIDDH INFRA™

NOTES

A series of horizontal dotted lines for writing notes.



NOTES

A series of horizontal dotted lines for writing notes.

