



KESHAR VATIKA

3 BHK ultra-luxurious apartment.

the **d**esire to live in the **best location**



KESAR
VATIKA

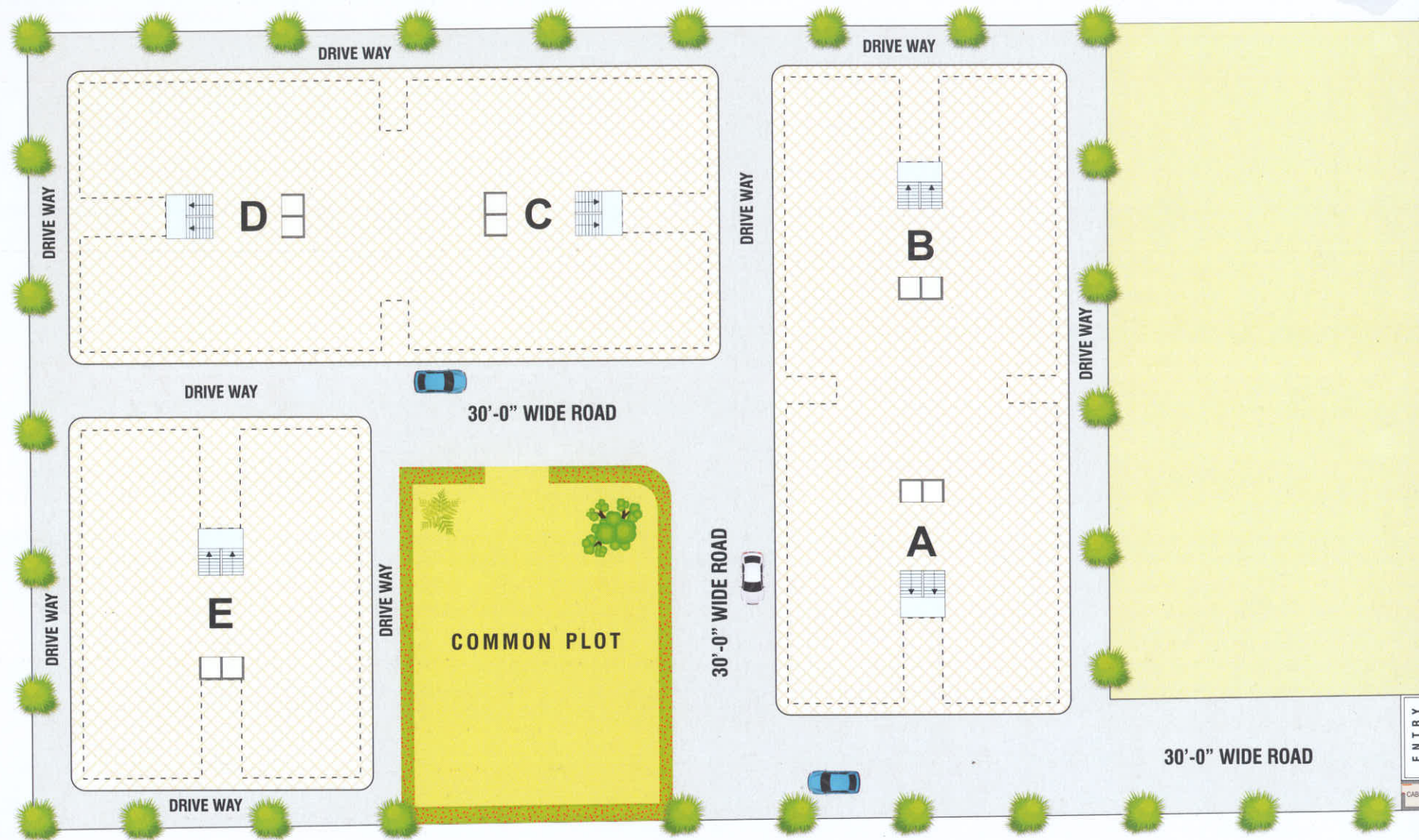
3D P
MBL NO. 9
web-3
info@3
2824

tion

3D P
MBL NO. 9
web-3
info@3
2824



KESHAR
VATIKA

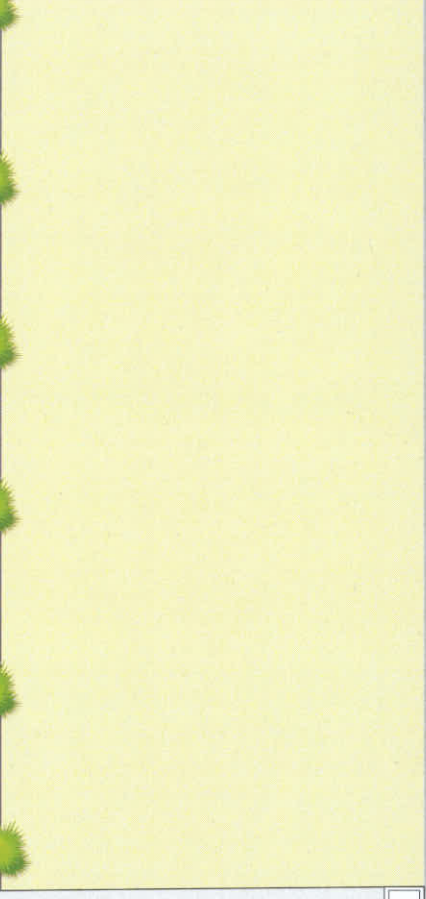
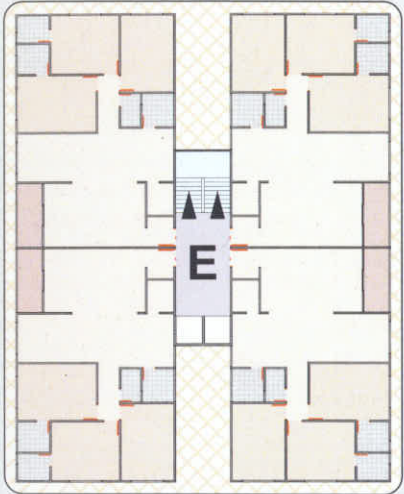
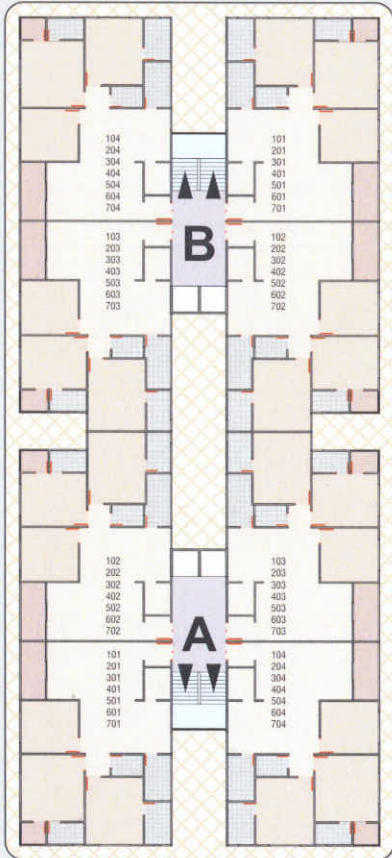
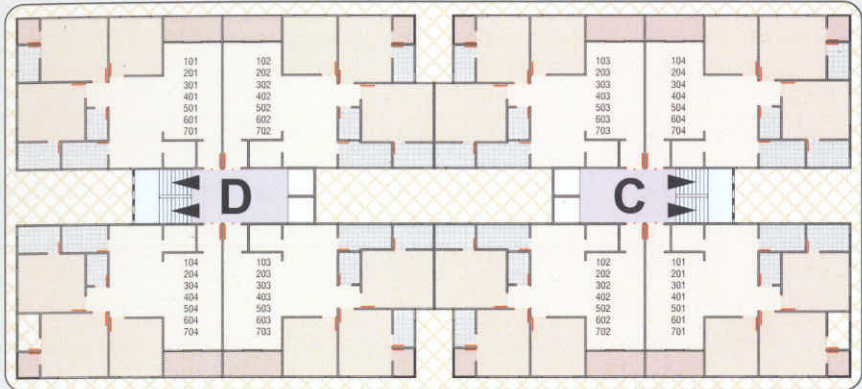


typical | layout | plan



12.00 MT. WIDE T.P. ROAD

12.00 MT. WIDE T.P. ROAD



floor | layout | plan



ENTRY

CABIN




Block A & B





JOINT

JOINT

JOINT

JOINT



TOILET
9' X 6'0"



KESHAR VATIKA



Specifications

• **Drawing Room / Dining Room**
600 mm x 800 mm Vitrified tiles
single mala plaster with wall putty,

• **Bedroom**
600 mm x 600 mm Vitrified tiles in all bedrooms,
Walls and Ceiling - single mala plaster with wall putty,
Flush doors with both side laminate.

• **Kitchen**
Mirror polish granite kitchen platform,
Ceramic tiles dado on kitchen platform with stainless steel sink.

• **Toilets**
Table top counter basin in all toilets,
Cera or equivalent sanitary ware.

• **Windows**
Anodized aluminum sliding windows with stone sill.

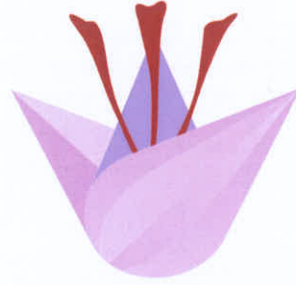
• **Electrical Work**
Branded modular switches



EXTRA FACILITIES

- *Gated Community with exquisite Landscaping*
- *24 x 7 Security*
- *Exclusive Children's Play area*
- *Modern Automatic Lifts of Standard Company*
- *Ample space for parking.*





KESHAR VATIKA

Developer



Shree Hari Developers

Architect



Z AXIT ENGINEERS
Ahmedabad

Site Address

Keshar Vatika,
B/h. Somnath Party Plot,
Nr. Devasya International School,
Nikol, Ahmedabad.

Notes : • All rights are reserved to Developer for any charges in plan & Specification. • Irregular payment shall cause cancellation of booking. • GEB, AMC, Stamp Duty, Legal Charge, G.S.T., Labourcess Narmada Water Connection, Gas & Initial maintenance contribution will be levied extra. • Any additional liabilities due to change in the laws, stamp duty, Govt. Laws shall be borne by member. • Change in external elevation shall not be permitted. Internal charges shall be done only with prior permission and shall be charged extra in advance. • Details & Dimensions in brochure are indicative & for the tentative representation only which should not be treated as legal documents. • Possession of the unit shall be given only after full payment. • Subject to Ahmedabad Jurisdiction.