



# MAHALAXMI

2 BHK EXCLUSIVE APARTMENTS

DREAM HOME







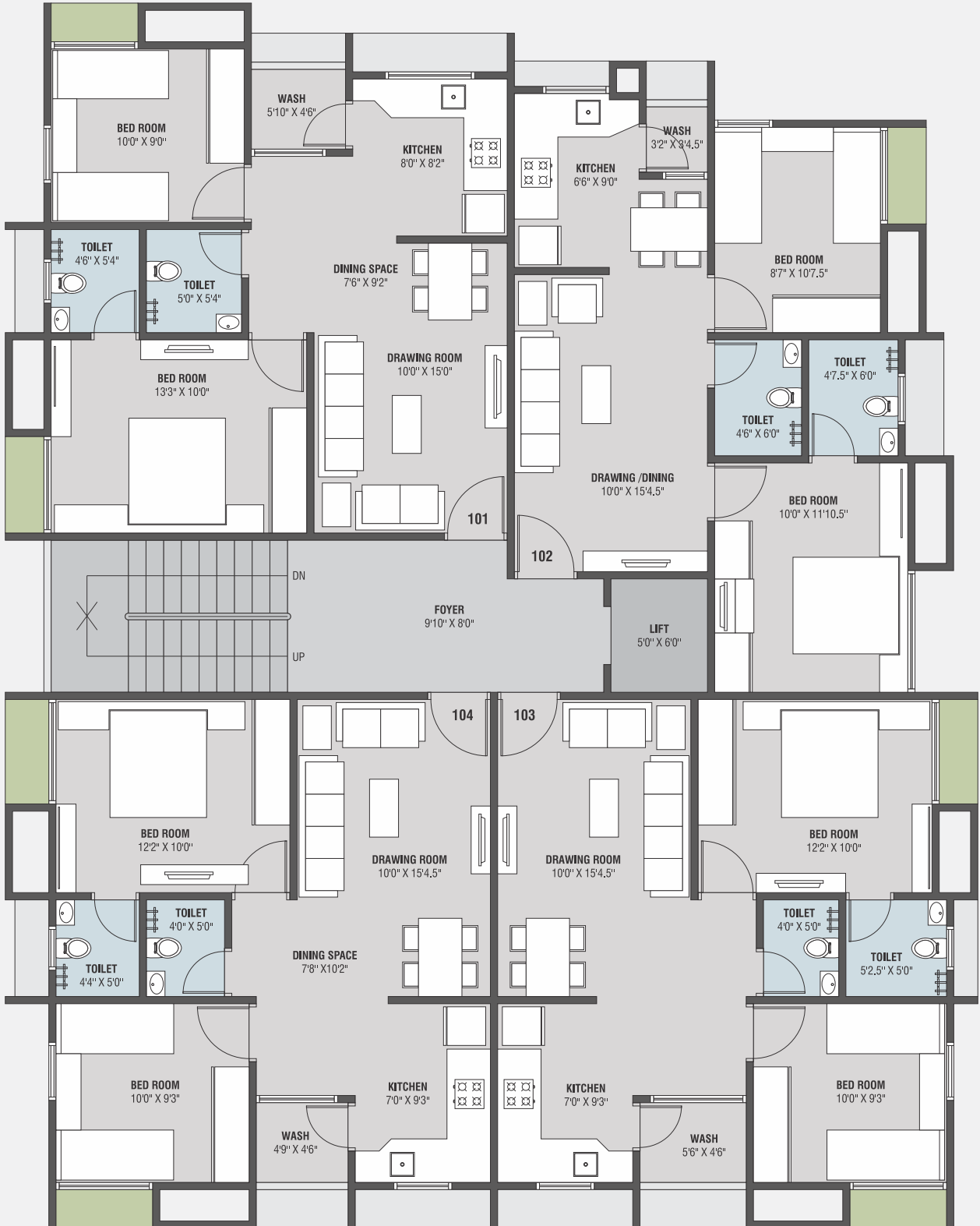
# LAYOUT PLAN



R O A D



# TYPICAL FLOOR PLAN



# Specification

## Structure

Earthquake resistant R.C.C. frame structure.

## Wall finish

Internal single coat plaster with white putty & External double coat sand faced plaster with semi-acrylic paint.

## Kitchen

Granite top platform with S.S. sink & designer tiles dado up to lintel level.

## Flooring

Good quality Vitrified tiles in entire flat. China mosaic in terrace for heat reflection.

## Electrification

Single phase ISI Concealed copper wiring with modular switches & MCB with sufficient electric points.

## Doors & Windows

Decorative main door and all other doors are flush door. Powder coated aluminium section sliding windows with plain glass & stone sill.

## Toilet & Plumbing

Glazed tiles in flooring & dado up to lintel level. Concealed plumbing with good quality sanitary ware & C.P fittings.

DEVELOPER

**ANANTA**  
DEVELOPERS

OFFICE : 71/4, EVERGREEN SOCIETY,  
NEAR KABIR ENCLAVE, GHUMA,  
AHMEDABAD - 380058.

BOOKING CONTACT

MO : 99131 34732

STRUCTURAL CONSULTANT

JIGAR D CHOKSI

SITE : 4, MAHALAXMI PARK, NR. AMANTRAN BUNGALOW, AROHI CLUB ROAD, SOUTH GHUMA, AHMEDABAD - 380 058.



RERA - PROJECT REGISTRATION NUMBER :

PR / GJ / AHMEDABAD / AHMEDABAD CITY / AUDA / .....

Website : [www.gujrera.gujarat.gov.in](http://www.gujrera.gujarat.gov.in)

NOTES : ● GEB & Substation charges, Legal expenses, GST or any such Govt. levies time to time will be charges extra. Stamp duty & Registration charges would be charge extra. ● Maintenance charges would be charge extra. ● The developers reserve the rights to change or make any modification & addition in the scheme. All the dimensions / measurement given are unfinished & approximate.

● This brochure is not a part of legal documents. It is only for information of project.