

DEVELOPERS



**HEENA CONSTRUCTION**

*Golden butterfly*

FOR INQUIRY: 97234 51336

heenaconstruction091221@gmail.com

SITE ADDRESS

Murli Apartment, Nr. Nima Vidhyalay,  
Bhimjipura Cross Road,Ahmedabad - 380 013

PROJECT DESIGN



**aarav SPACE**  
*Design*

Email : info@asdcompany.in

Website : www.asdcompany.in



ParthCreative  
+91 98255 06685



**MURLI**  
APPARTMENTS

2 BHK SUPERIOR LIFESTYLE



**MURLI**  
APPARTMENTS

---

**Elegant & Delightful...  
Lifestyle living at its best!**

Designed thoughtfully with great care, these apartments shall truly fulfill the desires of its elites residents for a home which is complete in all respects.



GROUND FLOOR PLAN



MURLI  
APARTMENTS



24.40 MT ROAD

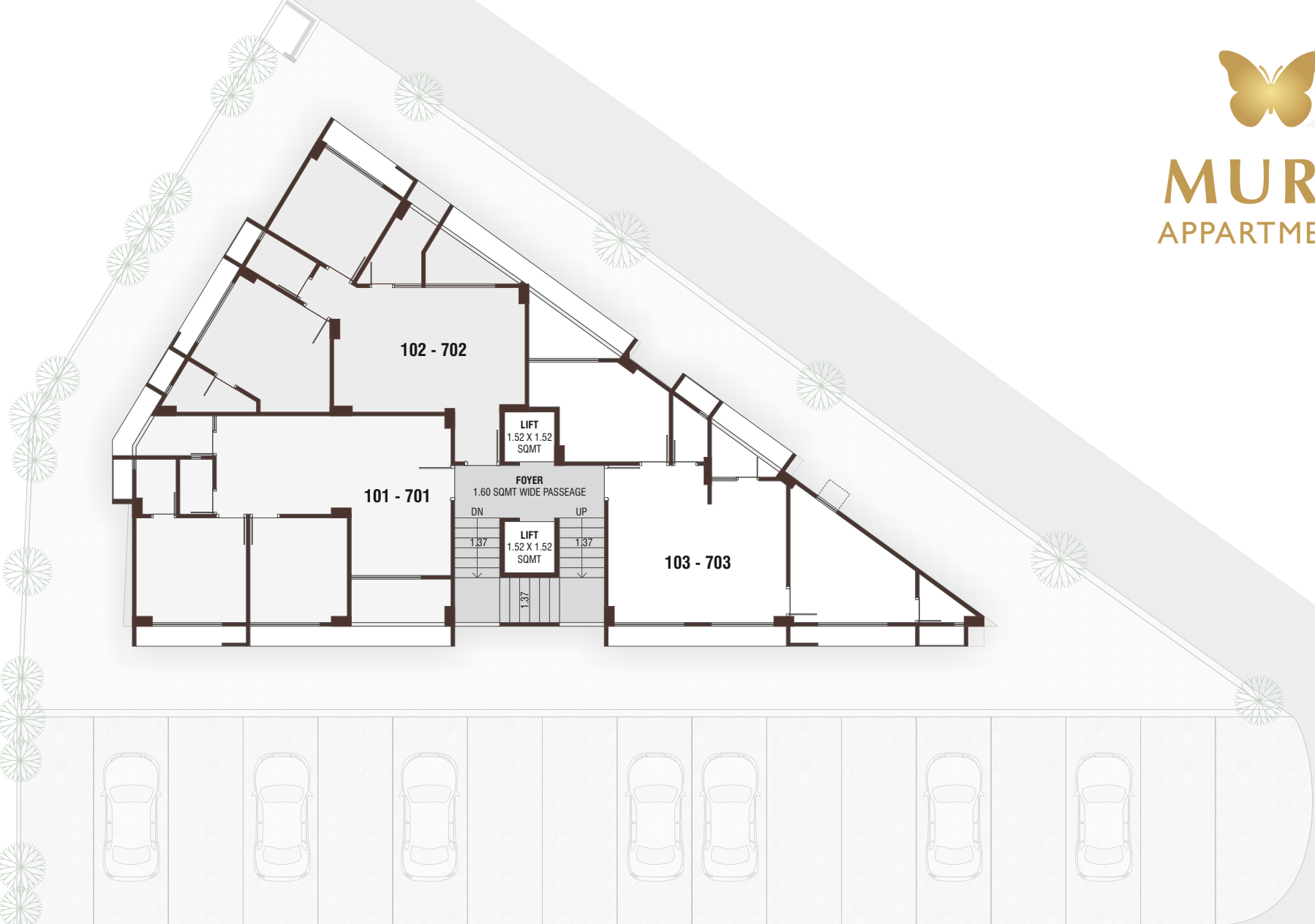




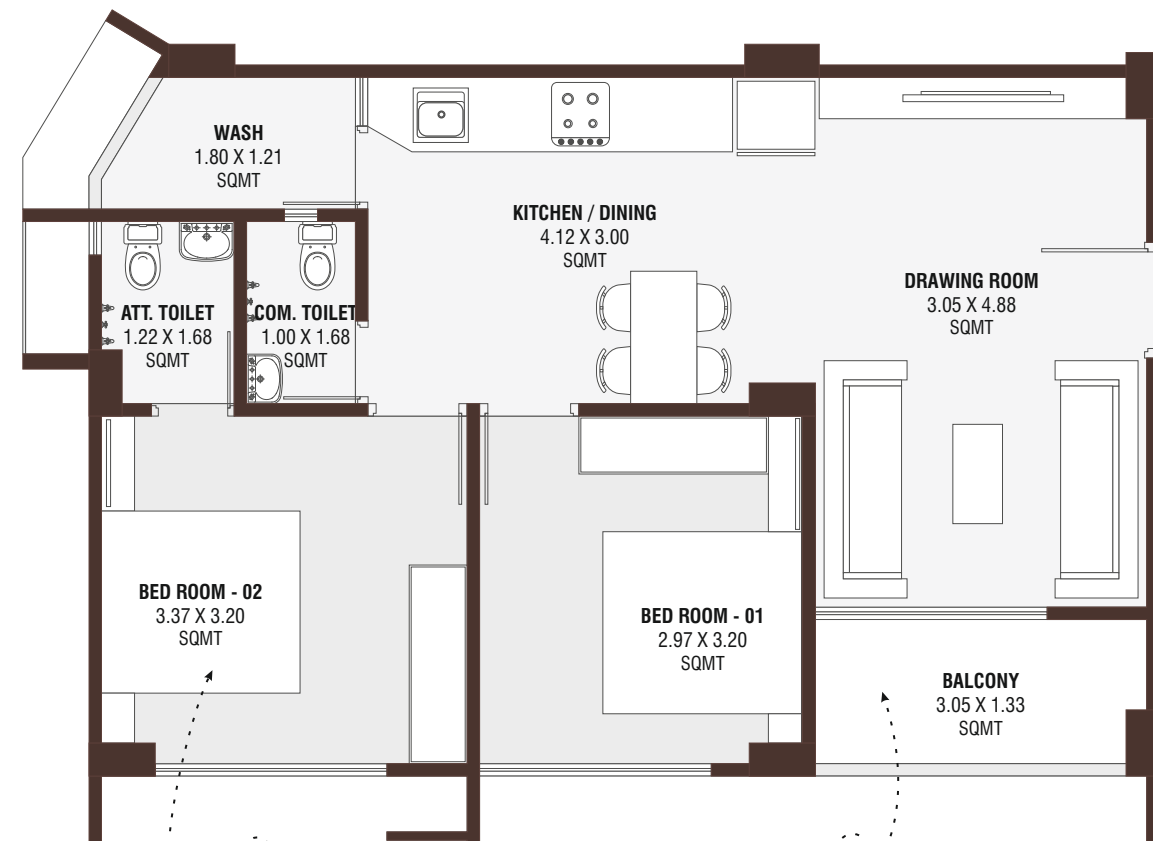
TYPICAL FLOOR PLAN



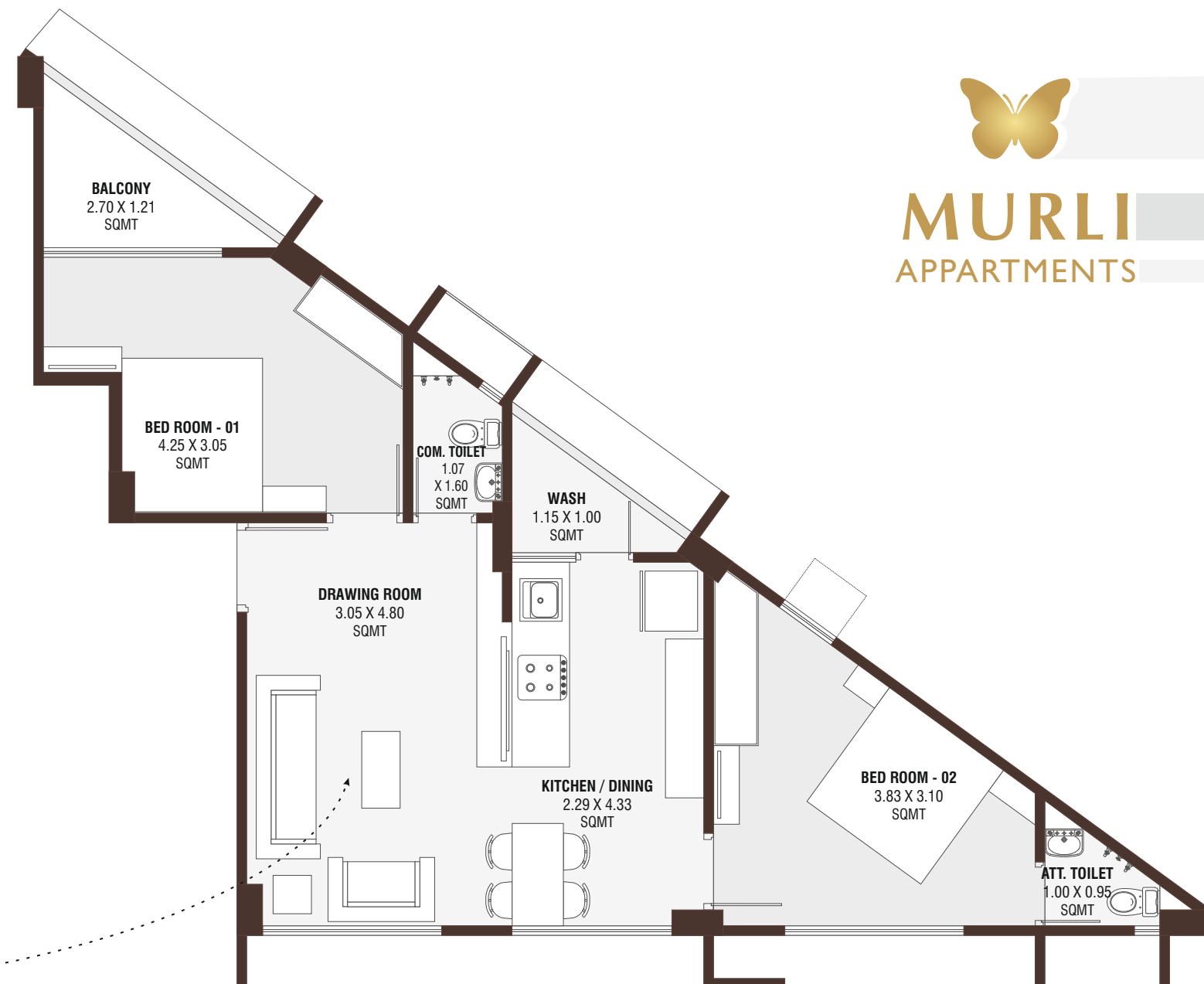
MURLI  
APARTMENTS



UNIT PLANTYPE - A



UNIT PLANTYPE - B



MURLI APPARTMENTS

\*All Dimensions Are In SQMT.



**MURLI**  
APARTMENTS

## Amenities That Match Your Lifestyle Needs



Attractive Main Gate



Dual wide Staircase



24 Hrs. Water Supply



Each Block Auto. Lift



Fire Safety

## SPECIFICATIONS

### STRUCTURE

Quality controlled earth quake resistant R.C.C. frame structure. Design by Experienced Structure eng.

### ELECTRIFICATION

Concealed ISI copper wiring with modular switches & sufficient number of point with MCB distribution panel. As per electrical consultants advice.

### DOOR & WINDOWS

Decorative main door with wooden frame. All other doors are plain flush door with wooden frame. Aluminum / UPVC sliding windows with marble/granite stone seal.

### FLOORING

Unique premium quality vitrified tiles in entire apartment. China Mosaic water proofing for heat reflection in terrace.

### TOILET

Designer glazed tiles up to lintel level. Premium quality bath fittings & sanitary wares. (Jaquar / Cera / Similor)

### KITCHEN

Granite top platform with S.S. Sink. Designer glazed tiles dado up to beam bottom level and also below the platform.

### PLUMBING

CPVC/UPVC pipes for water supply, Standards PVC Pipes for solid waste and drainage systems percolation recharge well as per the Consultants Advice.

### WALL FINISH

Internal single coat mala plaster with wall putty finish. External double coat sand face plaster / texture with good quality acrylic paint.

### LIFT

1. Passenger Lift - 6 Person Capacity
2. Fire Lift - 6 Person Capacity

NOTE: Good environment is the main Feature of the Society. All rights reserved by the developers to make any changes in plan, elevations and other details which will be binding to all members. In order to maintain the aesthetics of the apartments at a very high level, installation of AC units will be permitted at the designated spots and nowhere else, changes which effect the elevation & structure system shall not be permitted for all times to come. Any external changes shall not be allowed. If a member's payment Irregular and unable to pay in time membership would be cancelled and the amount would be returned only after said unit has been resold (payment received from new purchaser & after deducting the management charges.) The details, facts specification & figures mentioned are compliance for information purpose only and are subject to modification/compliance require as RERA act. Applicable stamp duty, Registration charges, Legal Charges, GST at applicable rate or any taxes levied by the Government Authority are to be borne by Purchaser.

\*This brochure is only for advertisement, proposed development and is issued in good faith for guidance only and shall not be considered as legal document.

RERA Registration No. :