



**Nandini  
Skyview**

A PROJECT BY SWARA • ARHANT

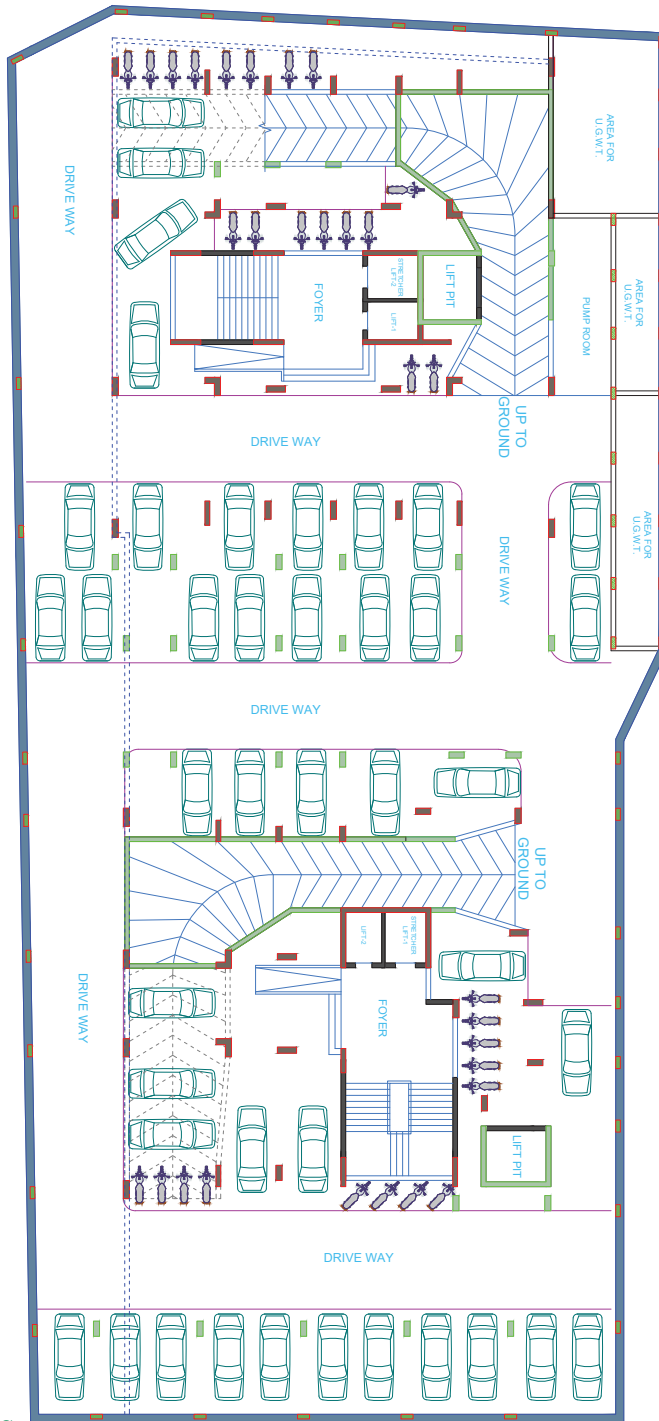


Promoter Name : A & S Developers

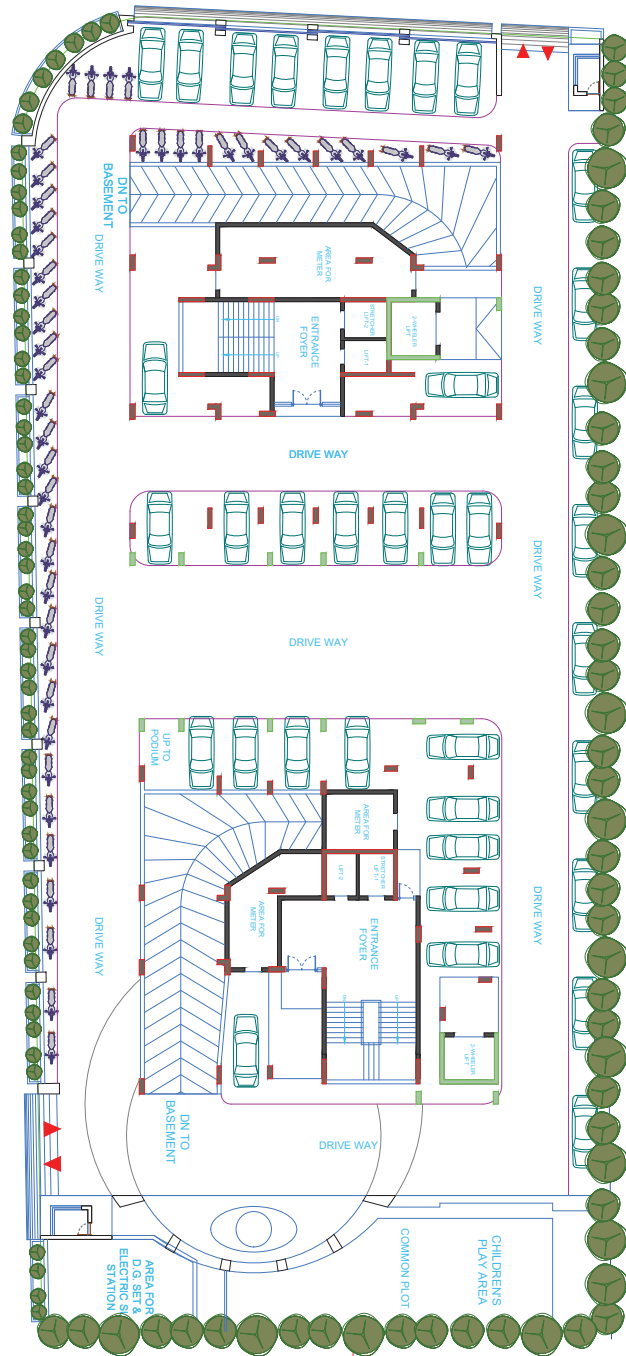


Promoter Name : A & S Developers

# BASEMENT FLOOR PLAN

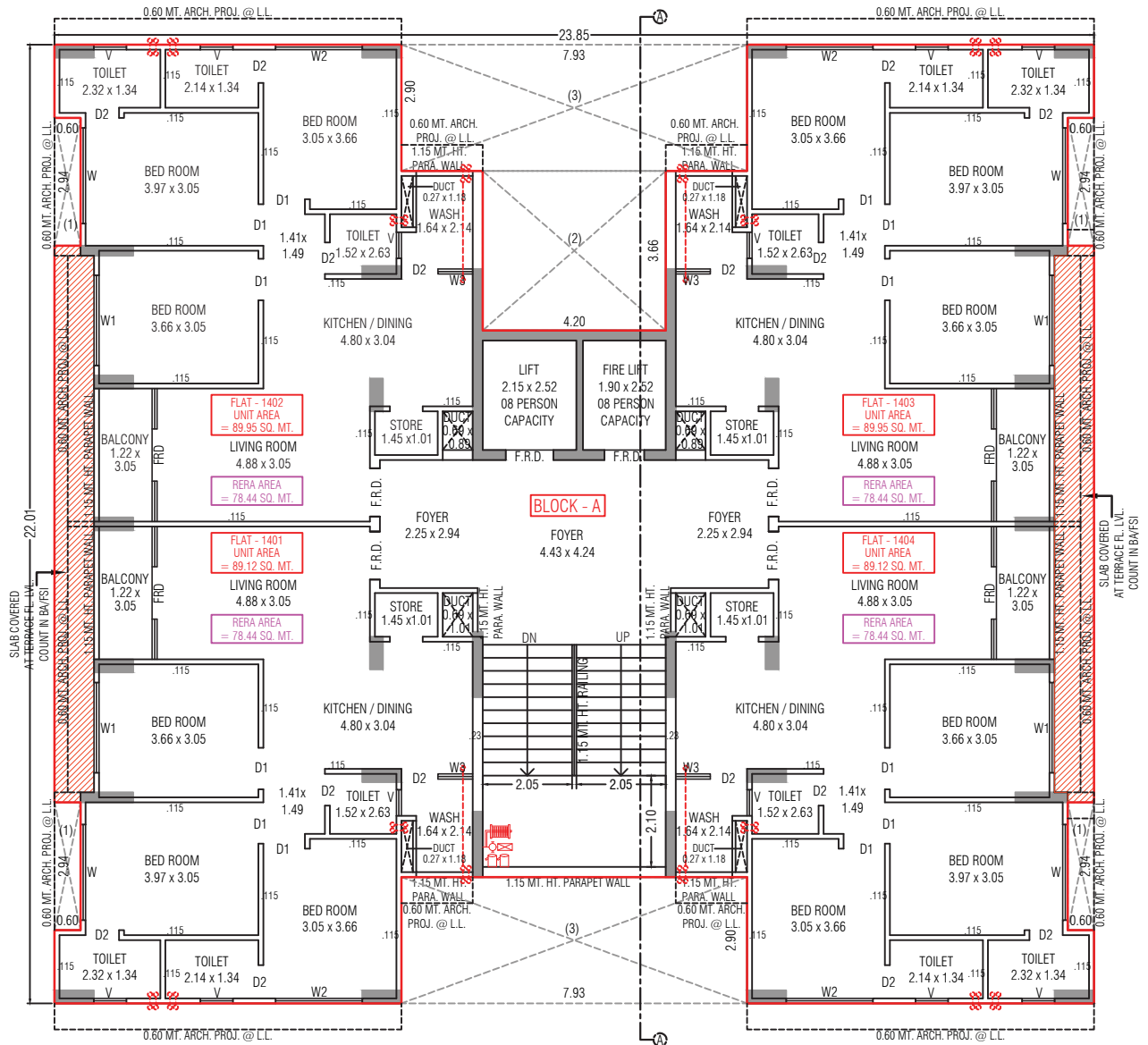


# GROUND FLOOR PLAN



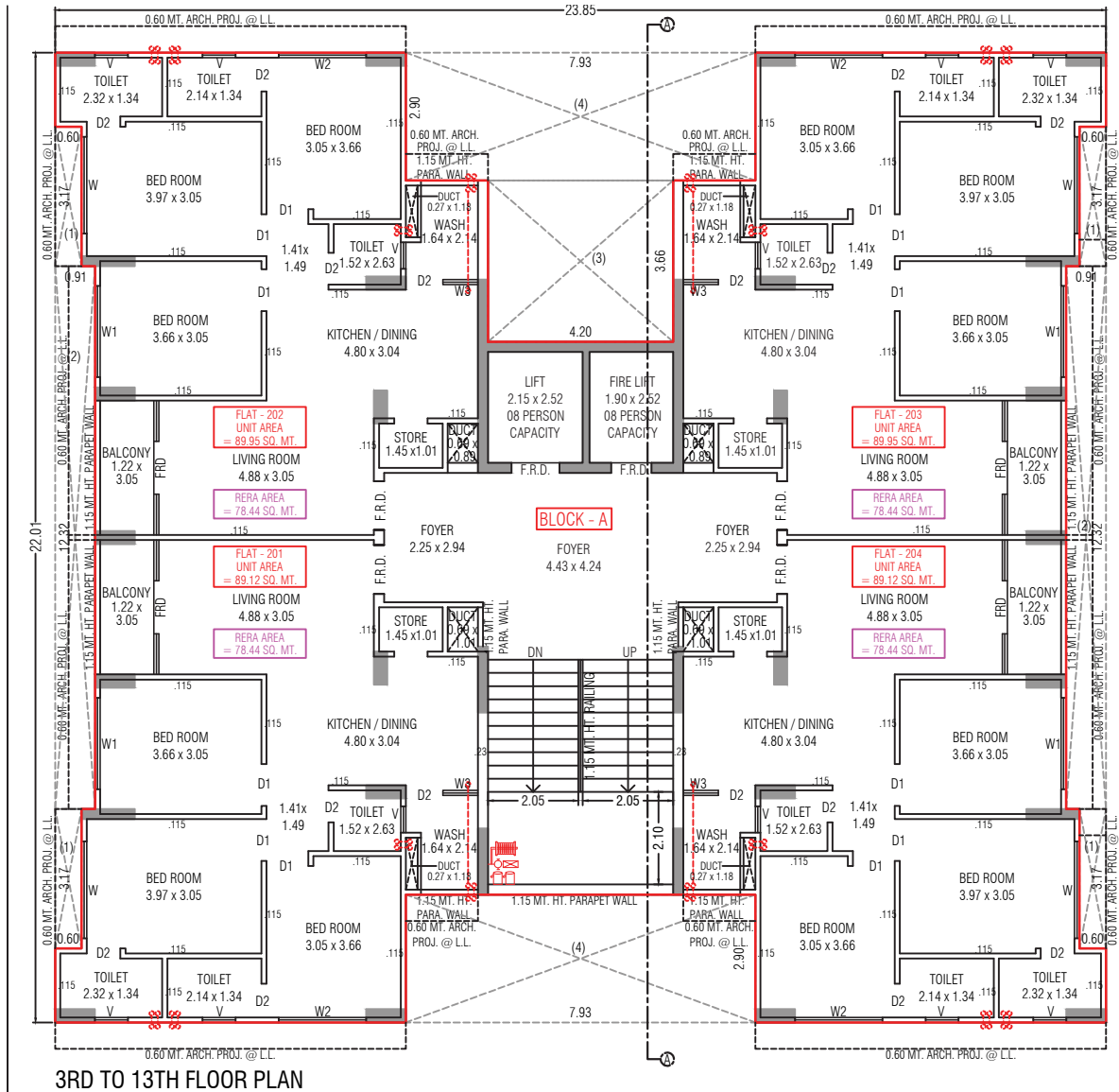
# BLOCK A

## 14TH FLOOR PLAN

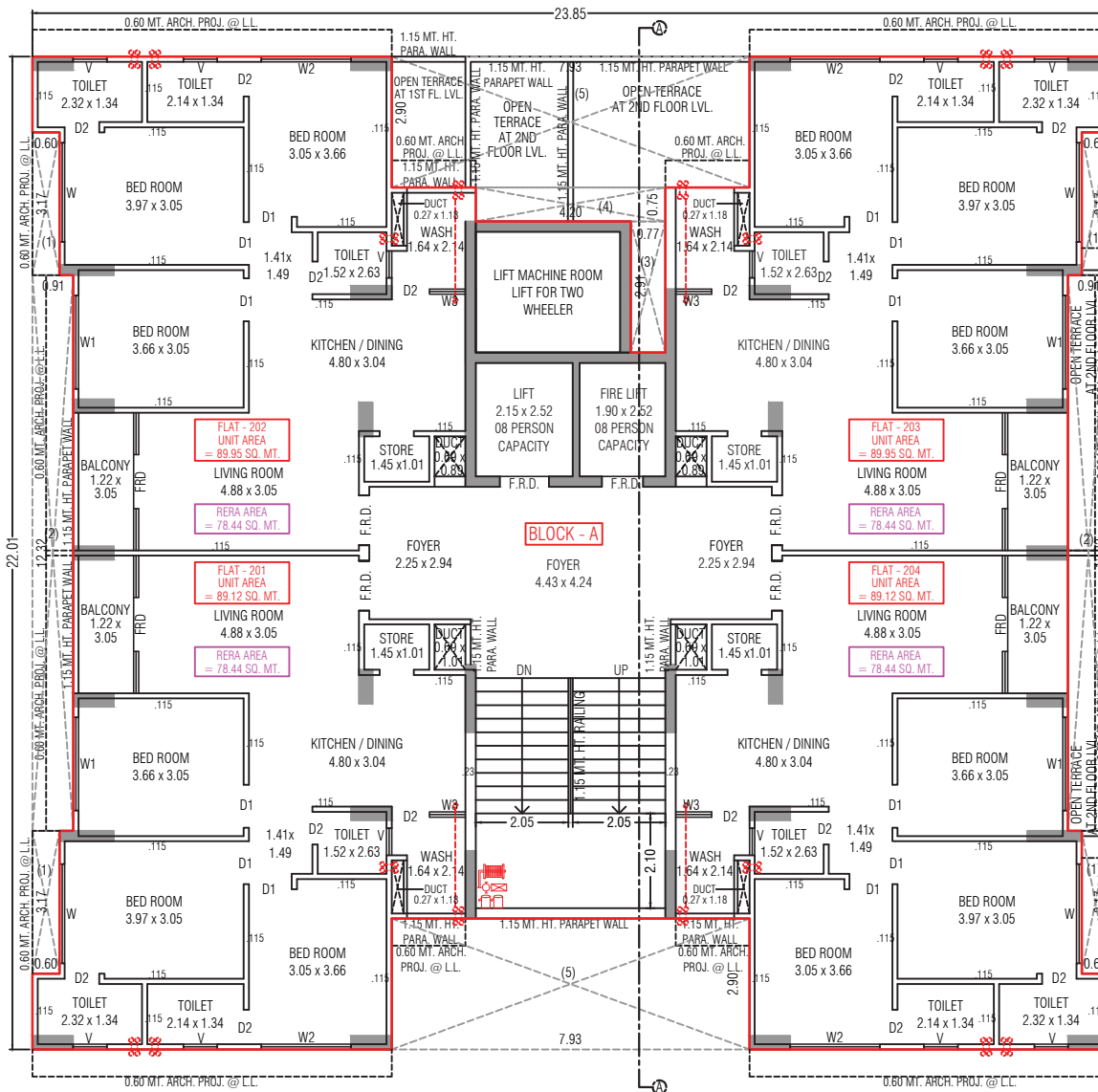


# BLOCK A

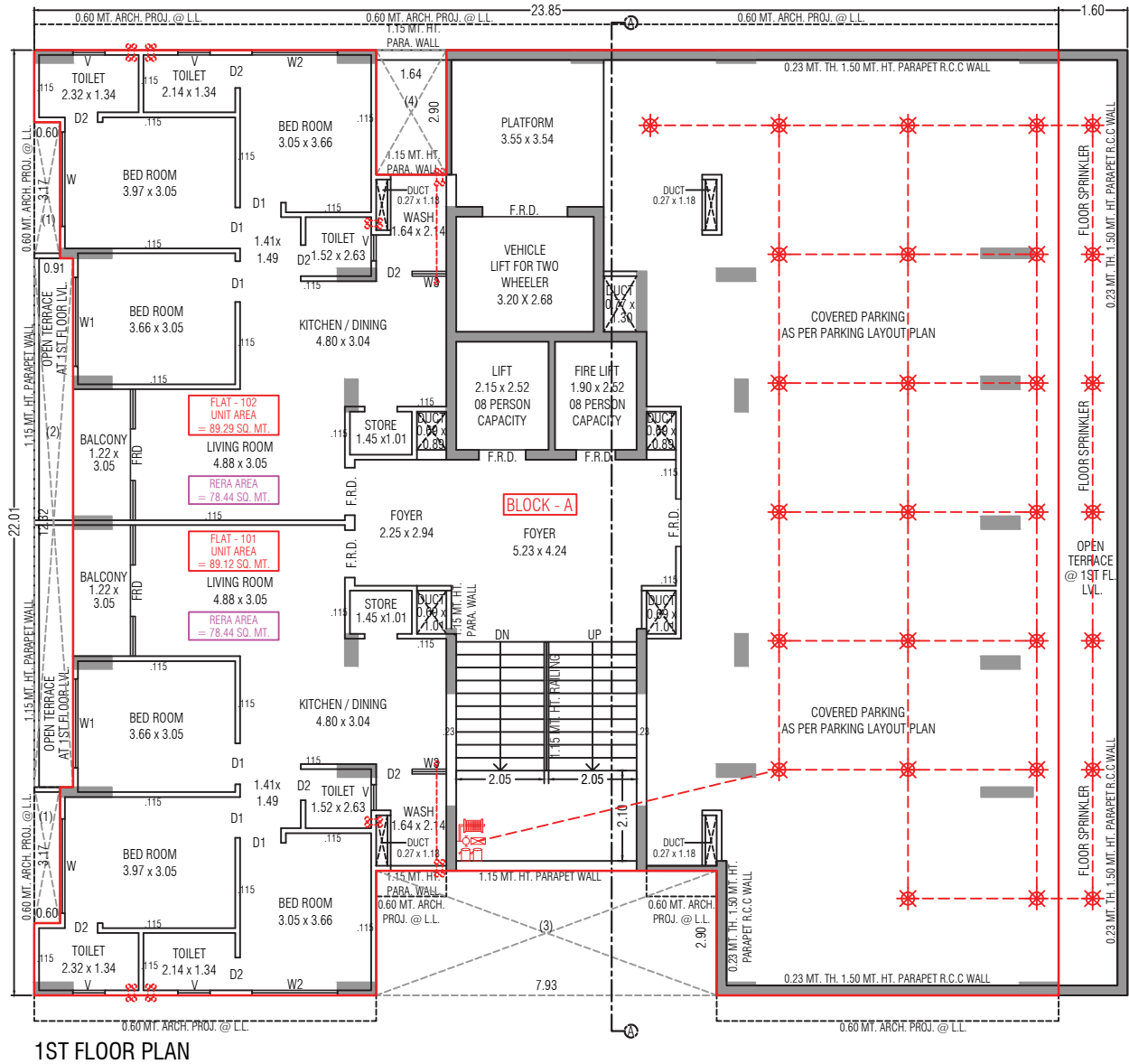
## 3RD TO 13TH FLOOR PLAN



# BLOCK A SECOND FLOOR PLAN

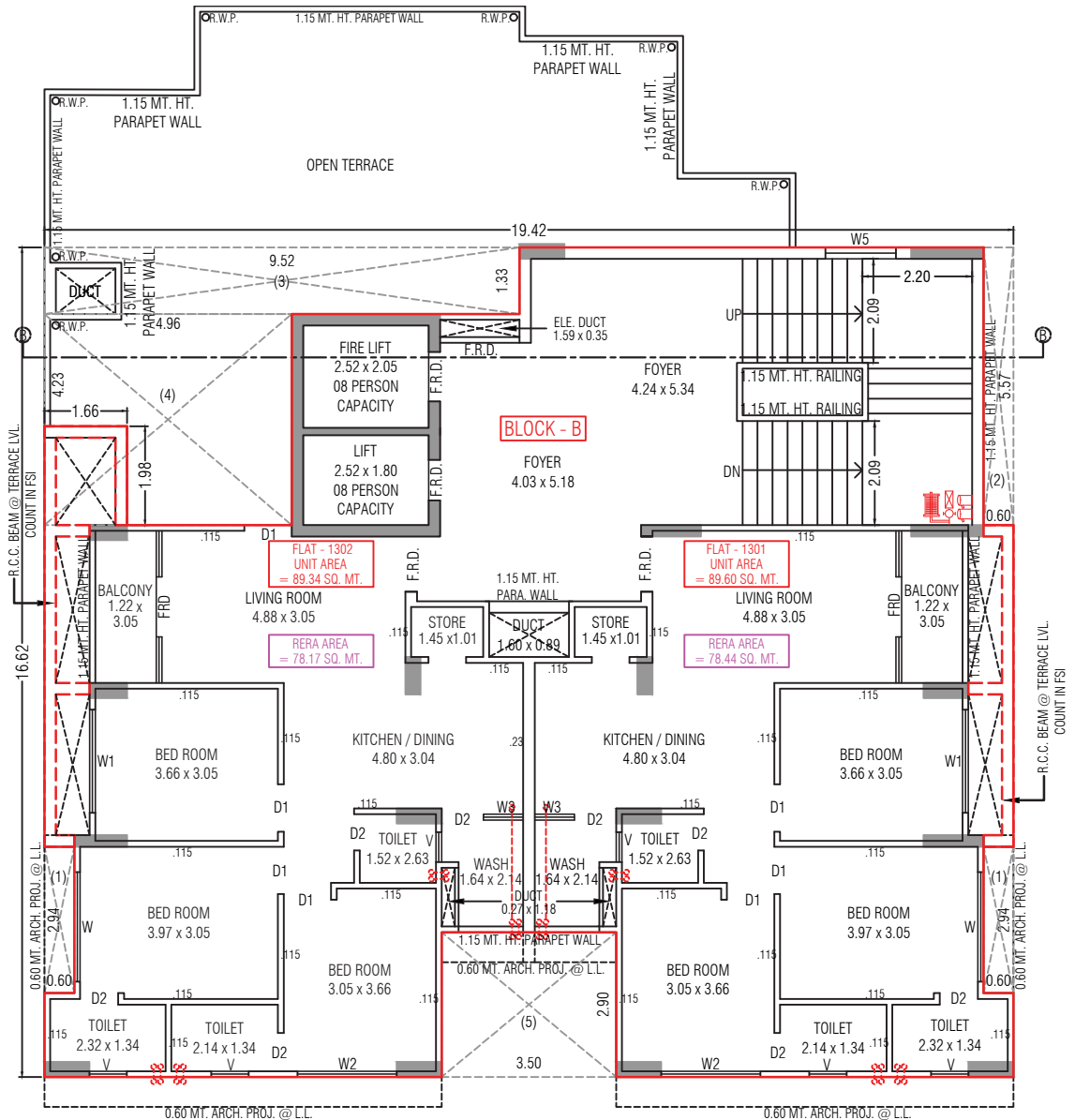


# BLOCK A FIRST FLOOR PLAN





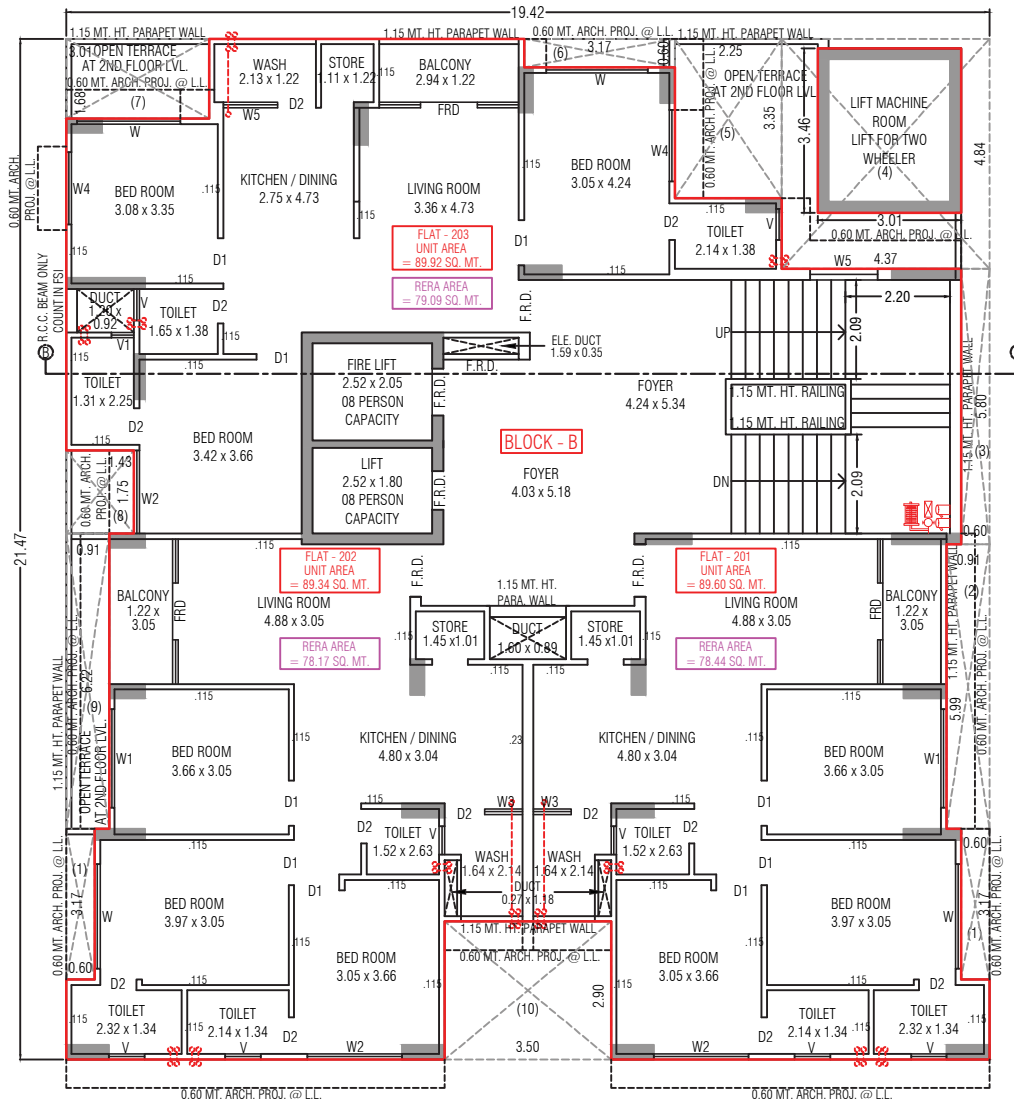
# BLOCK B 13TH FLOOR PLAN



13TH FLOOR PLAN



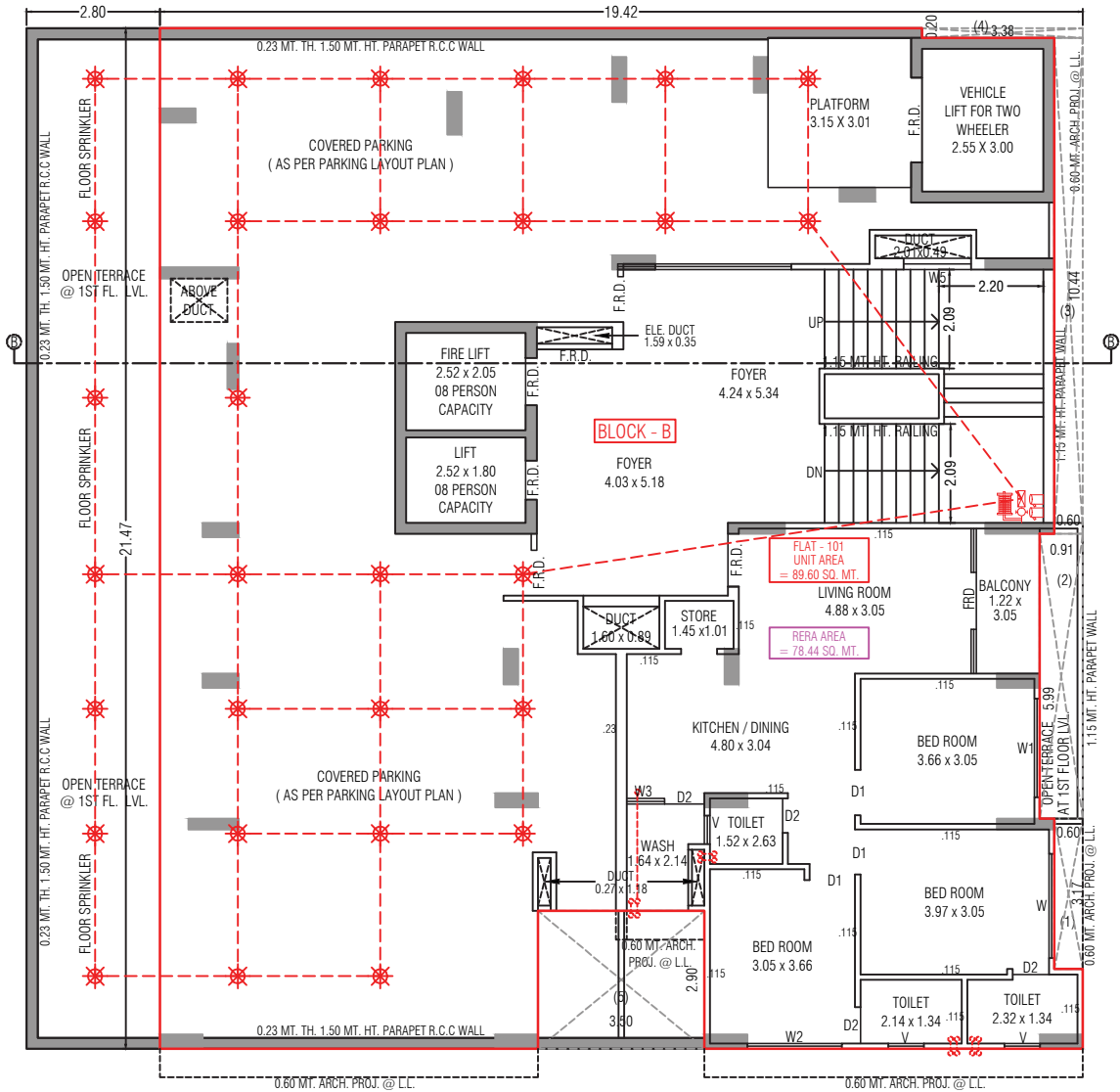
# BLOCK B SECOND FLOOR PLAN



**2ND FLOOR PLAN**

# BLOCK B

## FIRST FLOOR PLAN



1ST FLOOR PLAN

# Specifications



## Flooring

- Premium vitrified tiles flooring



## Door

- Main Door: Flush Door with Laminated Sheet Both side with wooden frame
- Internal Door: Flush Door with both side Laminated Sheet with Granite Frame



## Window

- International quality powder coating aluminium with 5 mm glass



## Wash Area

- Floor: Kota or Rustic vitrified tiles
- Dado: Premium ceramic or vitrified tiles



## Electrification

- 3 phase power connection
- Conceal ISI copper wiring with modular switches
- MCB distribution panel



## Railings

- MS/Toughened glass railing



## Paints

- Inside: Putty finish
- Outside: Acrylic paint/Texture



## Kitchen & Store

- Flooring: Vitrified tiles
- Platform: Natural granite
- Dado: Premium ceramic tiles
- Store shelf: DP Kota/Granite shelf



## Security

- Video door phone security system to be linked with reception and access control in the lobby
- Entire campus covered under CCTV surveillance



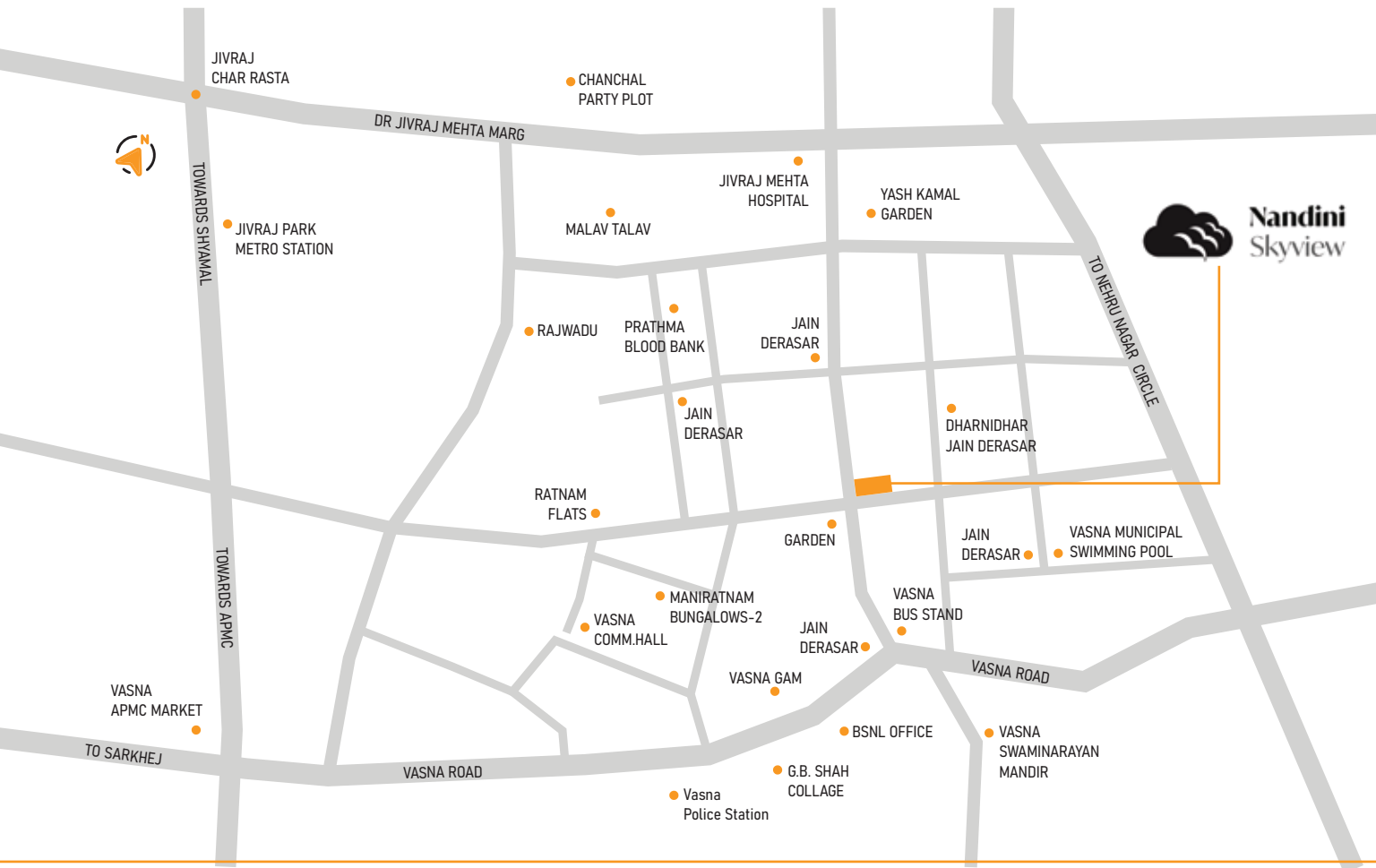
## Toilets

- Premium ceramic tiles upto lintel level
- Granite/counter basin
- EWC-wall hung type-Jaquar, Kohler/equivalent
- CP Brass fitting - Jaquar, Kohler/equivalent



## Balcony

- Rustic tiles/Granite



ARCHITECT    MEP    STRUCTURE