



NAKSHATRA

residency

2

live your
**healthy
life**

with lavishing
lifestyle

2 & 3 BHK
Lavishing
Apartments





perfect
blend of
health & luxury,
with convenience

**SHREE HARI
BUILDCON**
presents 2 & 3 BHK
apartments in the
peaceful environment
of Bopal, Opp.
Kalupur Bank.



NAKSHATRA
residency

— 2 —



remarkable value.
unbeatable location

Situated in Bopal Gives the project a sense of peaceful atmosphere, as well as it is also connected with city's strategic space, malls, schools, other avenues





typical floor plan





modern amenities. urban
location. sophisticated style.
Surrounded by greenery &
freshness of Bopal, Nakshatra
Residency fulfill your all
modern needs of
comfort



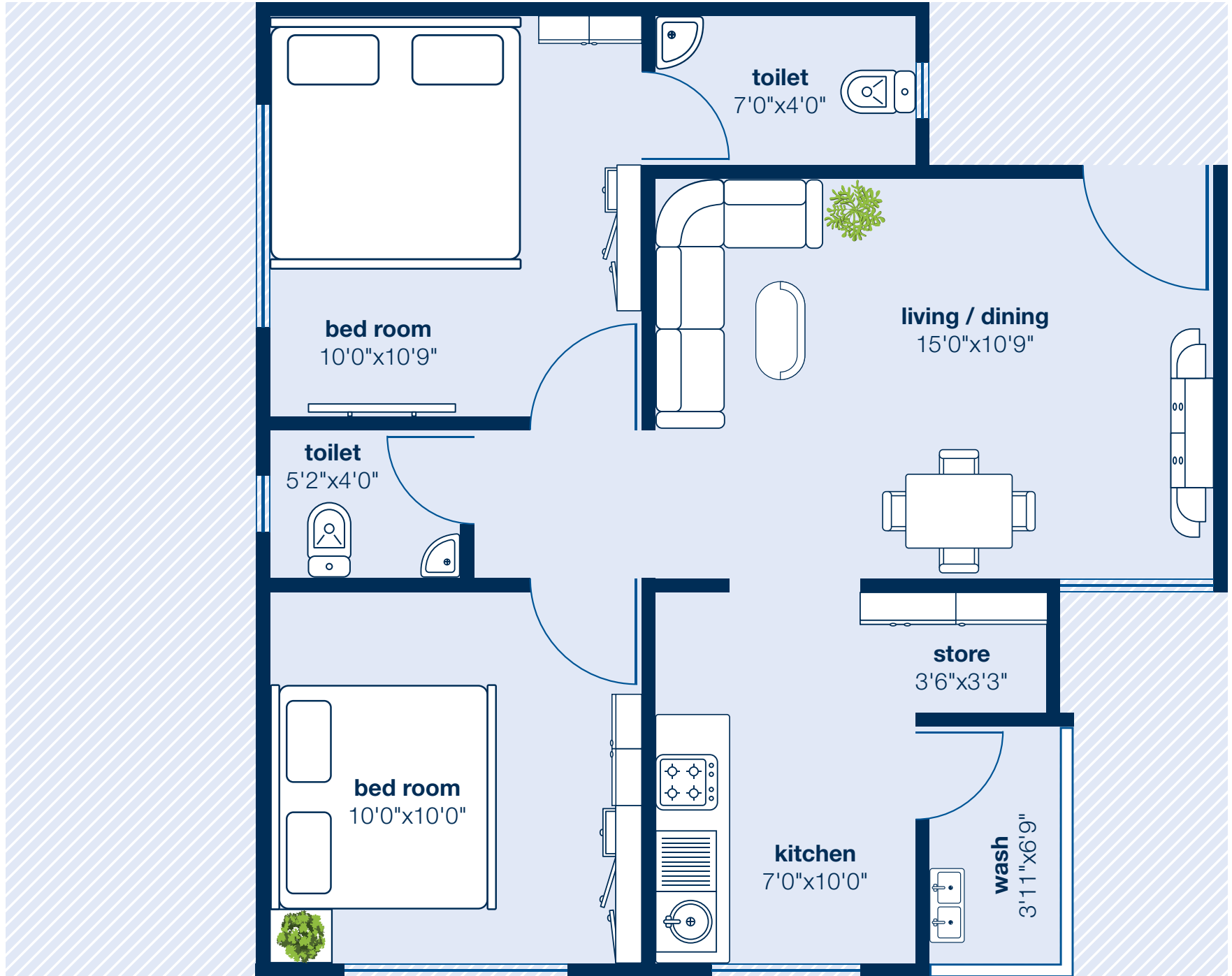


unit plan-a
from 101 to
501



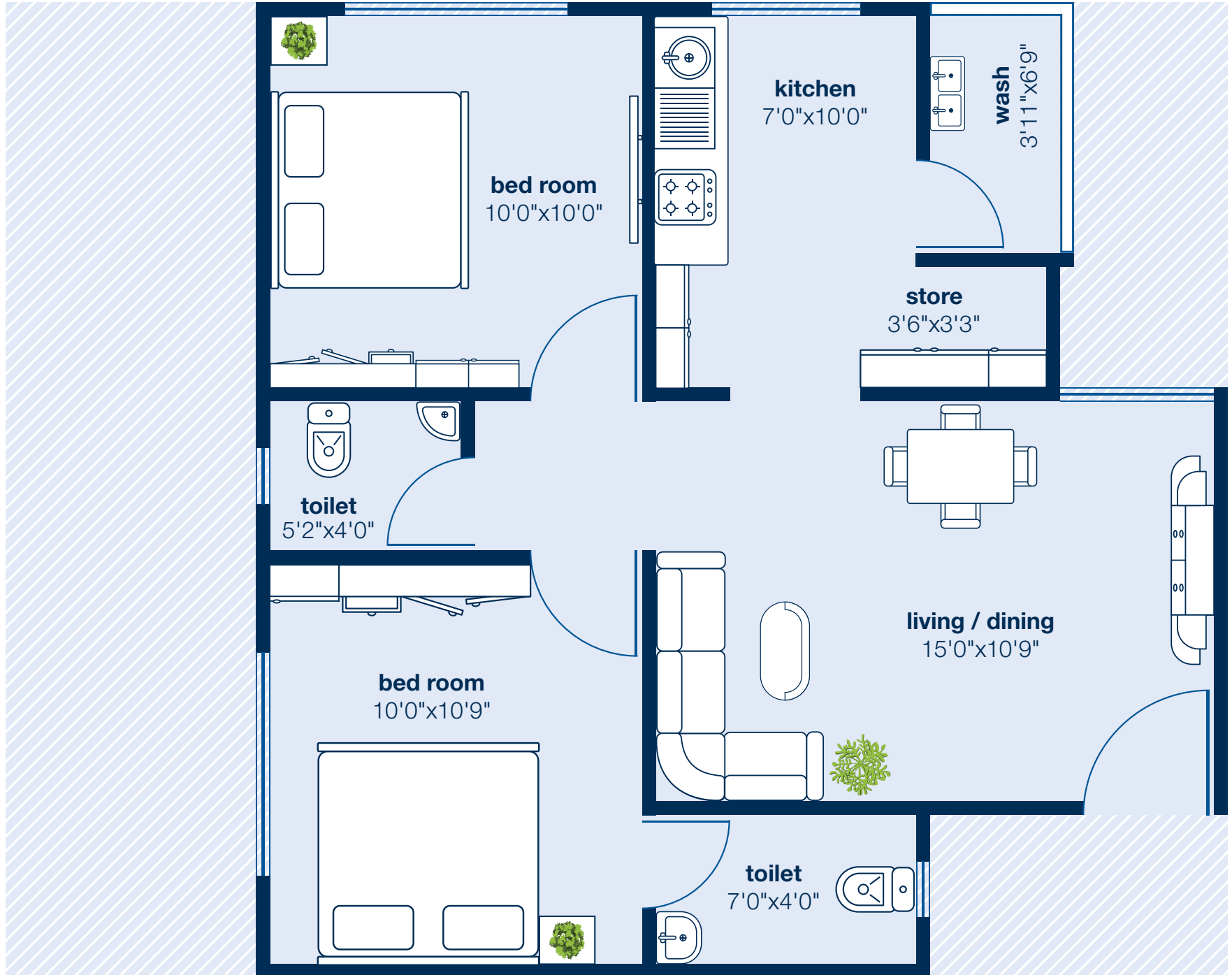


unit plan-b
from 102 to
502





unit plan-c
from 103 to
503



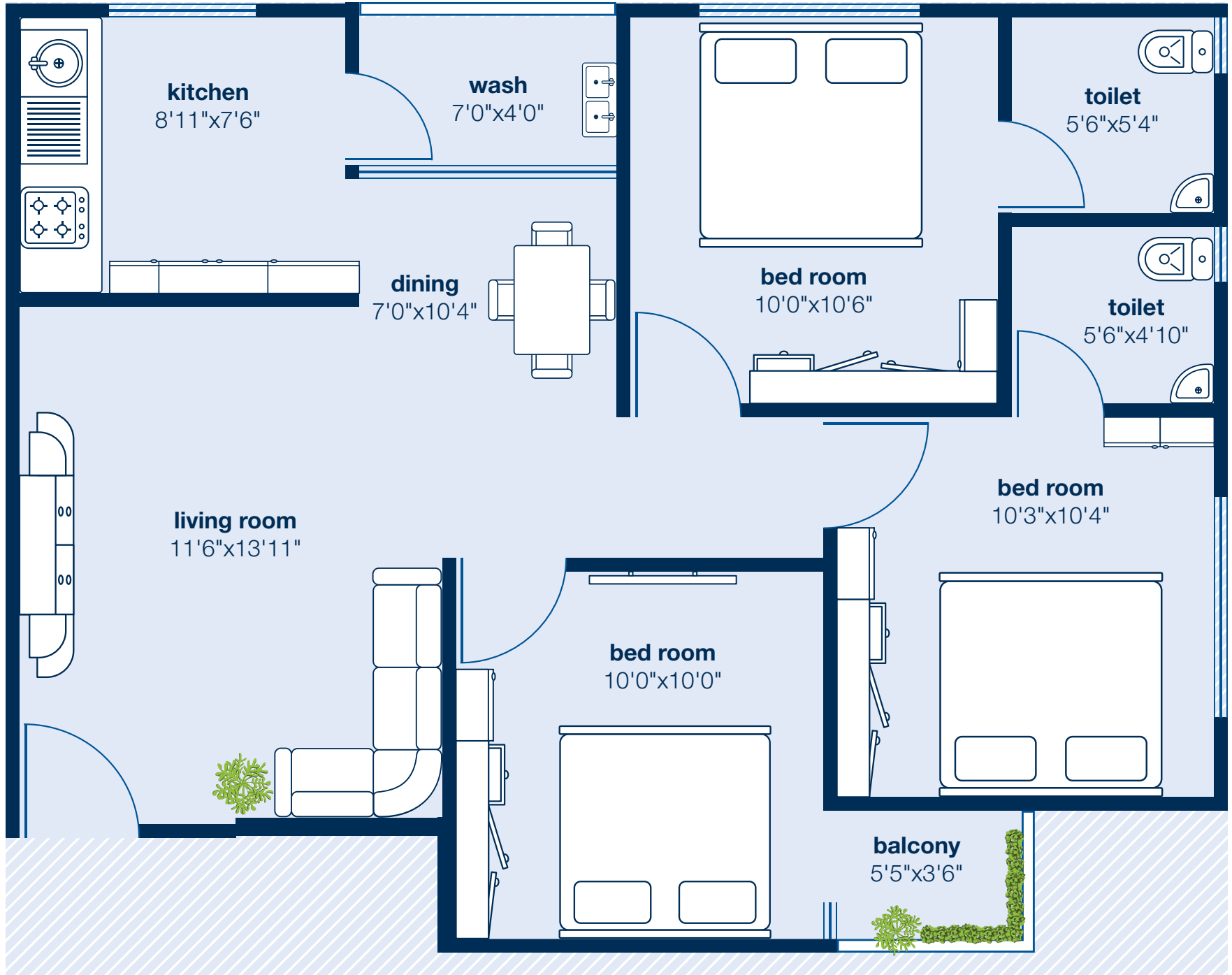


unit plan-d
from 104 to
504



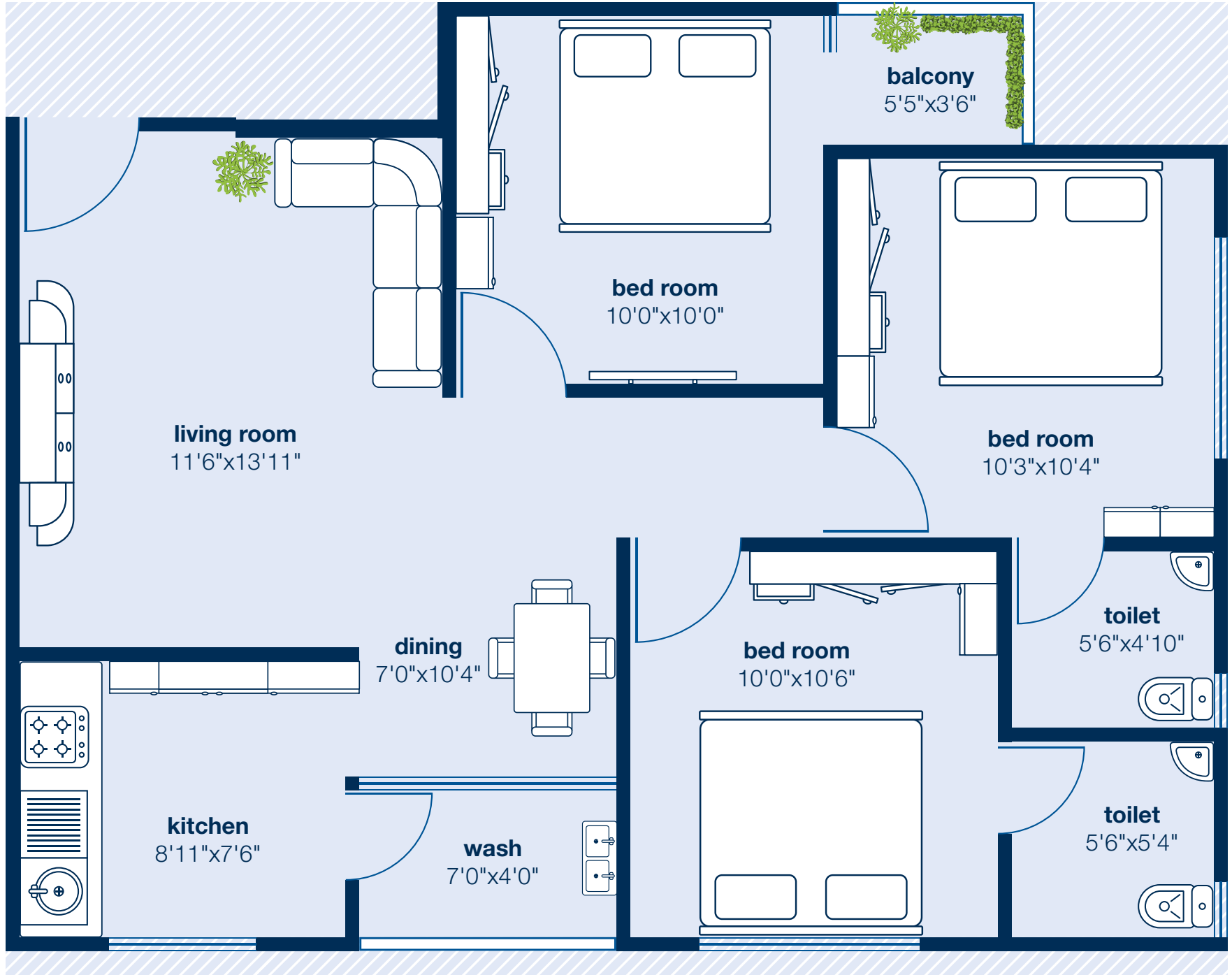


unit plan-e
from 105 to
505





unit plan-f
from 106 to
506





NAKSHATRA

residency

2

site address

10, Gitanjali Plots,
Opp. Kalupur Bank, Bopal,
Ahmedabad - 380058

+91 98244 44489 | +91 99984 76616

blessed by sumptuous
amenities



parking



24hrs. water supply



elevator



CCTV camera



24hrs. security



specification



Structure

Earthquake resistant R.C.C. frame structure.



Flooring

Good Quality Vitrified tiles in entire apartment.
China mosaic for heat reflection in terrace.



Kitchen

Granite top platform with S.S. Sink. Designer
Glazed tiles dado up to lintel level.



Wall Finish

Internal single coat mala plaster with putty
finish. External double coat sand face plaster
with good quality acrylic paint.



Doors & Windows

Decorative main door with wooden frame. All
other doors are flush door with wooden frame
with good quality fittings. Powder coated
aluminum sliding window with marble stone
seal.



Electrification

Concealed copper wiring with modular
switches & sufficient no. of points with MCB
distribution panel.



Toilet & Plumbing

Designer glazed tiles up to the lintel level.
Good quality bath fittings & sanitary wares.

Developer reserves the rights for alteration of
specification and design. All dimension/area are
approximate, average & subject to variations. Irregular
payment shall cause cancellation of booking. GST,
AMC, Electricity, Legal, expenses, VAT, other GOVT.
charges, Stamp duty, & registration, maintenance
charges, maintenance deposit & membership fees
shall be done by the members. This Brochure is not
to be treated as part of the legal documents, it is for
the easy presentation of the project.

**Disclaimer: The detail, facts, specifications,
figures mentioned in brochure are indicative
for information purpose only and are subject
to modifications / compliance required as per
RERA act.**



blend your
emotions
with luxurious living
experience

project by



SHREE HARI
BUILDCON

architect

Pathway design
by vijay shah

str. eng.

Sarjan
Consultants

rera consultant

SPACECITIZ
INFONETS PVT.LTD