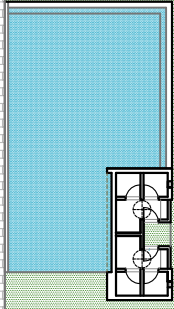
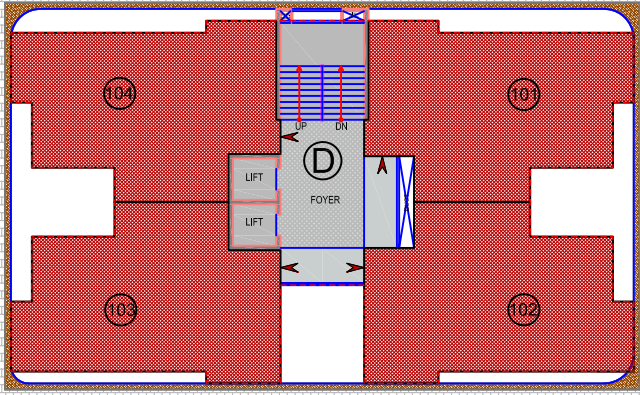


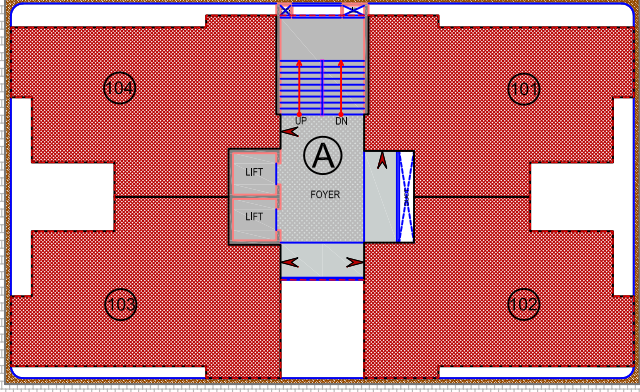
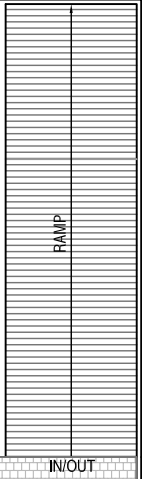
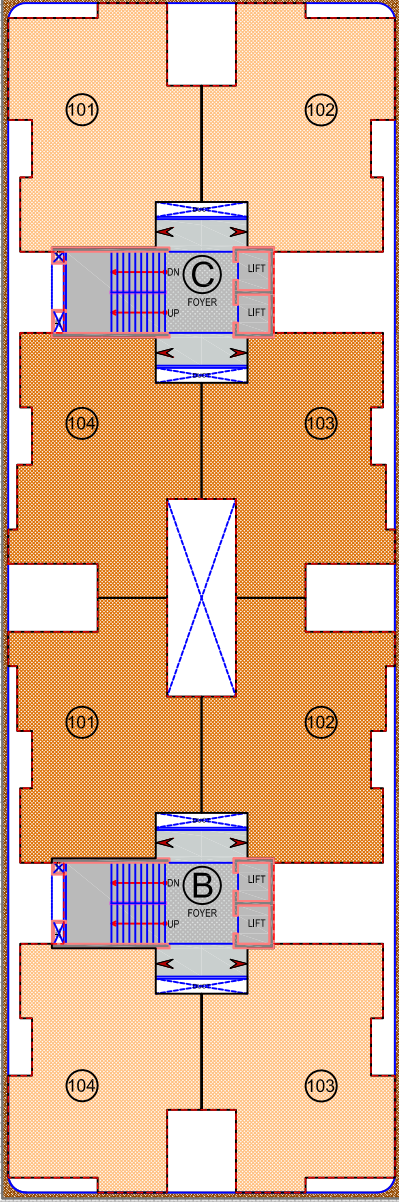
ORCHID

EXOTICA

AREA NOT IN POSSESSION



CLUB HOUSE

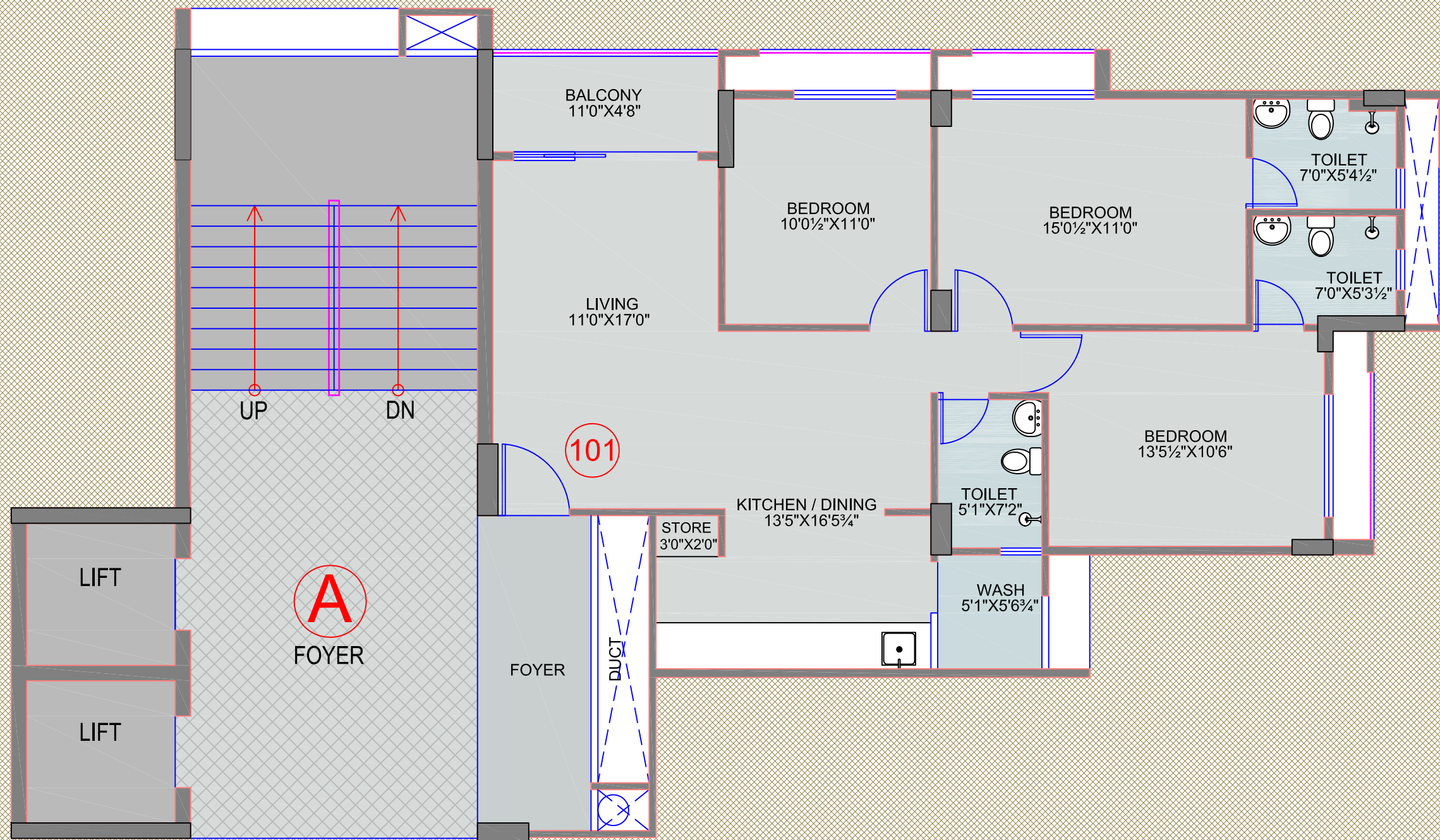


ENTRY

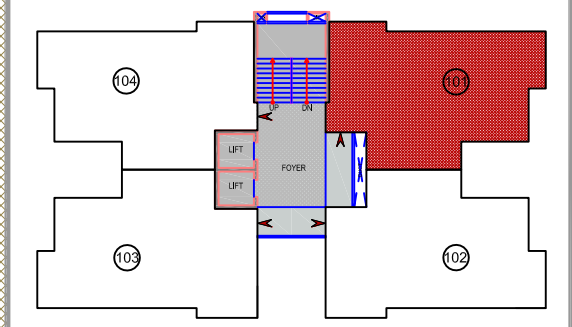
18.00 MT WIDE ROAD

SITE PLAN





BLOCK - A & D
TYPICAL UNIT
 BLOCK-A (1ST TO 13TH FLOOR)
 BLOCK-D (1ST TO 12TH FLOOR)
 BLOCK PLAN

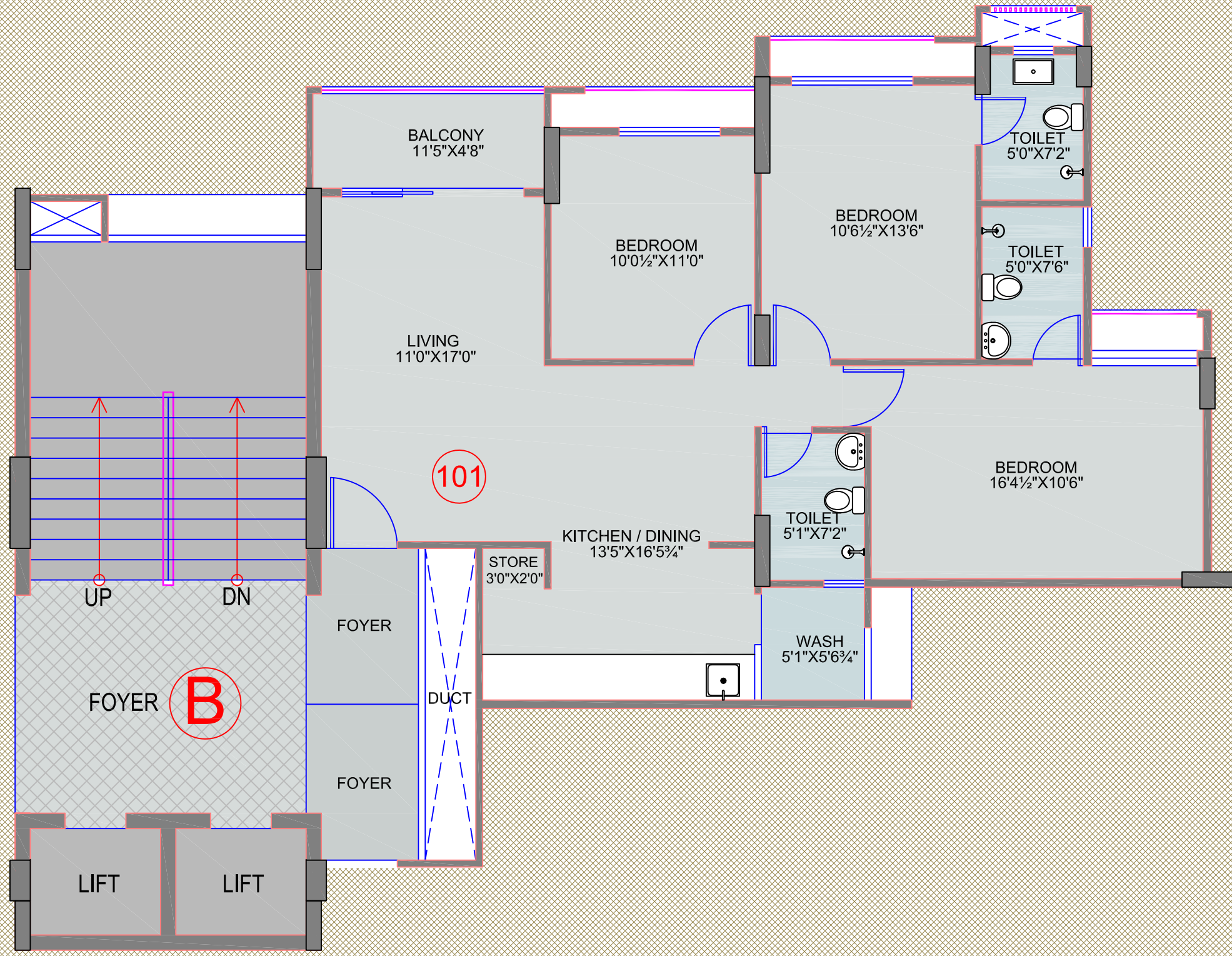


AREA AS PER RERA (BLOCK - A & D)

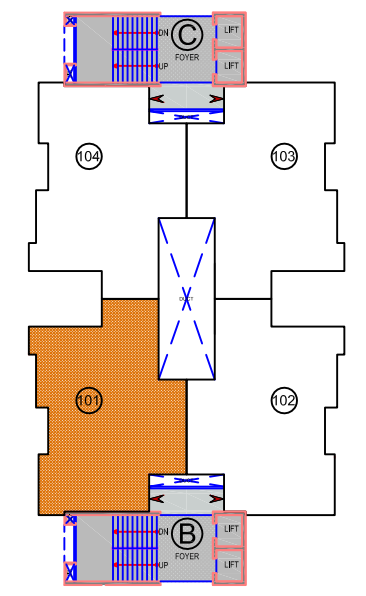
CARPET AREA IN SQ. MTR	VERANDAH / BALCONY IN SQ. MTR	WASH AREA IN SQ. MTR
89.93	4.77	2.60

BLOCK-A : ALL UNITS
BLOCK-D : ALL UNITS

TYPICAL UNIT PLAN



BLOCK - B & C
TYPICAL UNIT
 (1ST TO 13TH FLOOR)
BLOCK PLAN



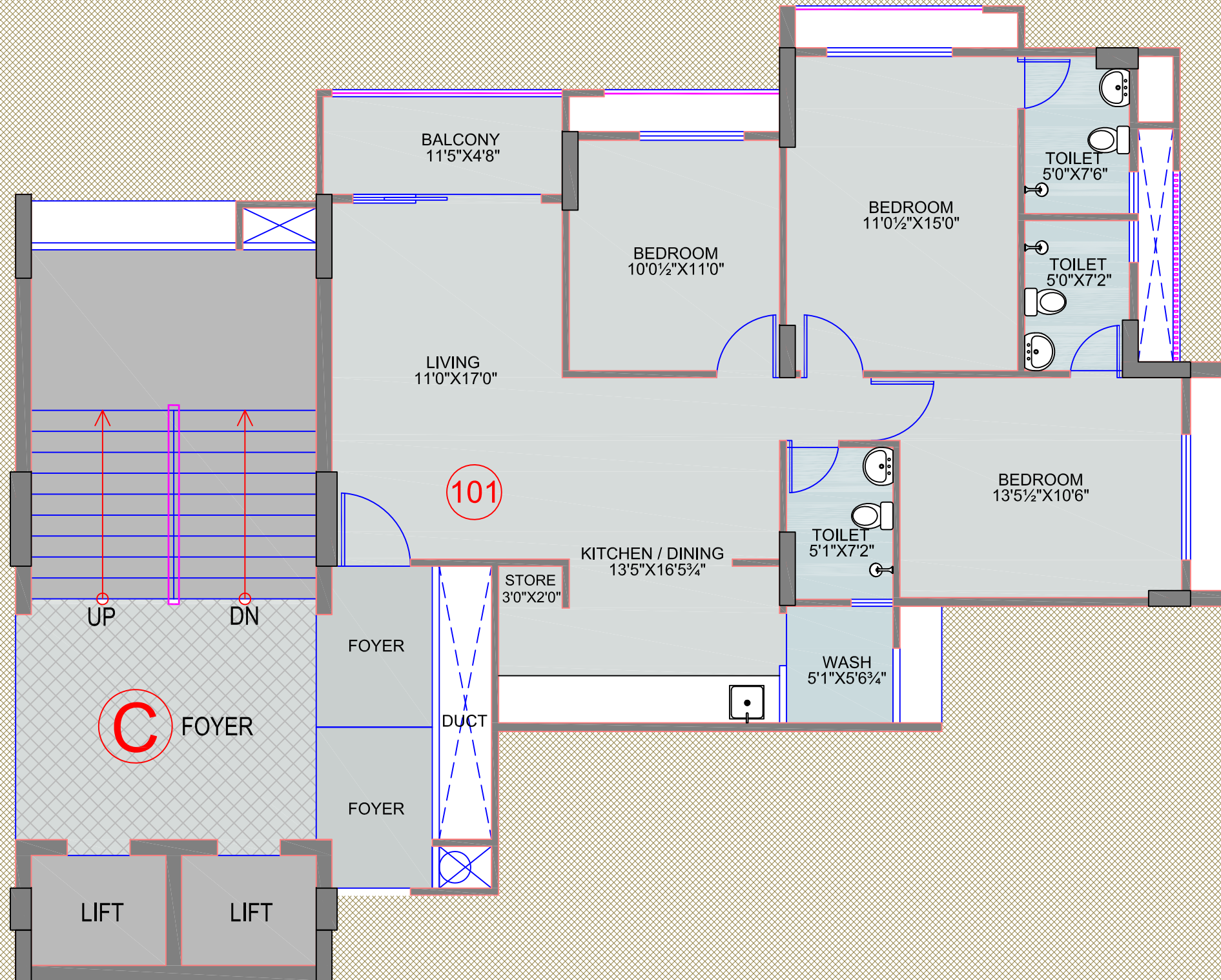
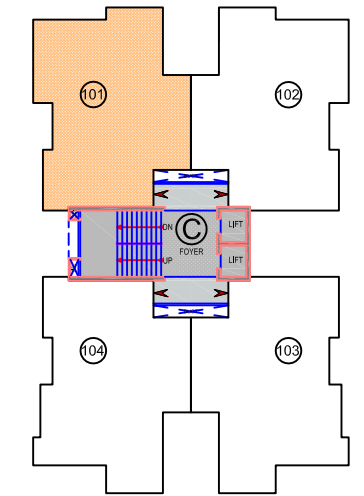
AREA AS PER RERA (BLOCK - B & C)

CARPET AREA IN SQ. MTR	VERANDAH / BALCONY IN SQ. MTR	WASH AREA IN SQ. MTR
90.30	4.94	2.60

BLOCK-B : UNITS - 1 & 2
BLOCK-C : UNITS - 3 & 4

TYPICAL UNIT PLAN

BLOCK - B & C
TYPICAL UNIT
 (1ST TO 13TH FLOOR)
BLOCK PLAN



AREA AS PER RERA (BLOCK - B & C)

CARPET AREA IN SQ. MTR	VERANDAH / BALCONY IN SQ. MTR	WASH AREA IN SQ. MTR
89.69	4.94	2.60

BLOCK-B : UNITS - 3 & 4
BLOCK-C : UNITS - 1 & 2

TYPICAL UNIT PLAN

DISCLAIMER

- **The brochure is for the easy presentation of the Project. It should not be considered as a part of the legal documents. For further information regarding the Project the Member / customer is requested to check the details on RERA website or at the Developer's office before going ahead with the booking.**
- **The furniture and fixtures, electrical appliances and other loose items shown in the brochure are only for illustrative purposes and do not form a part of the standard product on sale. The furniture layout shown in the brochure is only suggestive and subject to change as per site conditions and as per the instructions of the Project Architect.**
- **The Promoter / Developer reserves the right to make changes in the Project, its amenities and specifications as may be suggested by the Project Architect or the Structure consultant and any such changes made shall be binding on the customers / members of the Project.**
- **The Promoter / Developer reserves the right to make minor on-site changes during the course of construction and such changes shall be binding on all the members / customers of the Project.**
- **The dimensions shown in the brochure are approximate and calculated from unfinished surfaces and are rounded off to nearest whole number. The carpet area mentioned is calculated as per the provisions of RERA Act with the help of Autocad software.**
- **The images in the brochure are computer stimulated graphics and are subject to error and omissions. The member / customer is requested to check the physical location of the Project and visit the Project site before going ahead with the booking.**

GOYAL PROCON LLP

SITE ADDRESS :

ORCHID EXOTICA

NEAR ORCHID MAYFAIR

OFF CORPORATE ROAD, MAKARBA

AHMEDABAD – 380051

GOYAL PROCON LLP

Regd. OFFICE ADDRESS :

10TH FLOOR, COMMERCE HOUSE – 4.

BESIDE SHELL PETROL PUMP,

100FT SATELLITE ROAD,

PRAHLADNAGAR, AHMEDABAD - 380015

ARCHITECT

DIPIKA AMITSINH CHAVDA

(ADS ARCHITECT PVT. LTD.)

STRUCTURE CONSULTANT

BHOOMI CONSULTANTS
