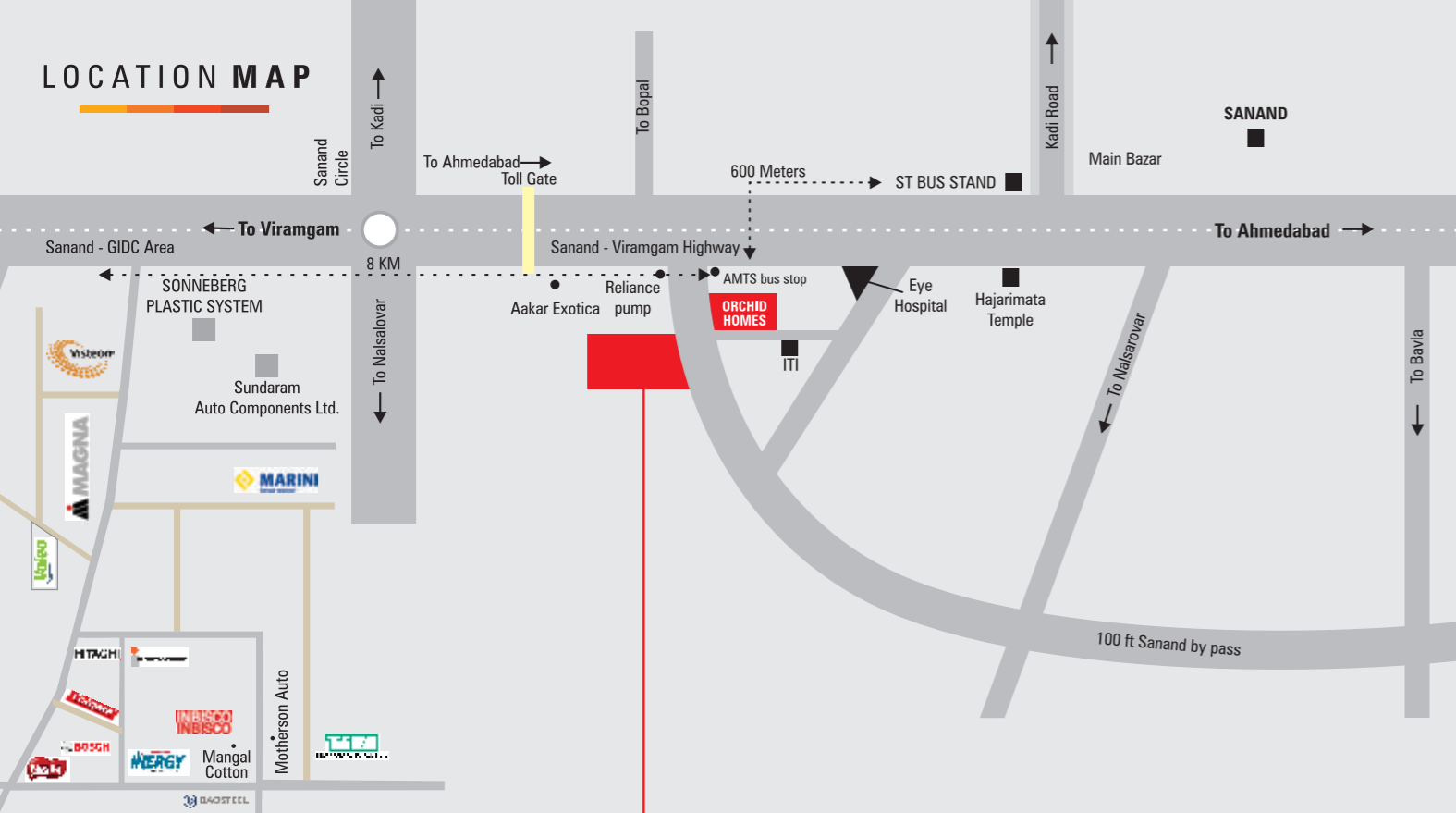


## LOCATION MAP



**Orchid**  
**VILLA!**

### SITE ADDRESS :

Nr. Reliance Petrol Pump, Sanand Bypass Road,  
Ahmedabad - Viramgam Highway, SANAND.

Developers  
**UM** **Udani & Mukhi**  
associates

### CONTACT :

+91 98255 06797, +91 99743 06106, +91 97231 33498

### STRUCTURE DESIGN

Alfa Consultancy - Amit Ka. Patel  
Ahmedabad.

### ARCHITECT

Mark Design - Ashwin Gajjar  
Ahmedabad.

THE WORLD WITHIN YOUR HOME

**Orchid**  
**VILLA!**

**3 & 4 BHK**  
ROW BUNGALOWS



## SPECIFICATION

### Structure

Earthquake resistant composite structure

### Wall Finish

Internal single coat mala plaster with putty finish & External double coat sand face plaster with water proof paint.

### Flooring

Vitrified tiels flooring for all rooms. China mosaic on terrace.

### Kitchen

Mirror polished granite platform with stainless steel sink & glazed tiles dado upto lintel level.

### Doors & Windows

Decorative attractive main door. All other doors with granite frame. All other windows are in aluminium section with granite sill.

### Plumbing Work

UPCV/CPVC internal concealed plumbing with op fittings.

### Bathrooms - Toilets

Glazed tiles dado upto Linter level. All fitting & fixtures of standard brand. Leak proof and corrosion free pipe fittings.

### Electrification

ISI Copper wiring of standard brand & quality. ISI modular accessories of Standard Brand with quality.



## AMENITIES



ENTRANCE GATE



LANDSCAPE GARDEN



CHILDREN PLAY AREA



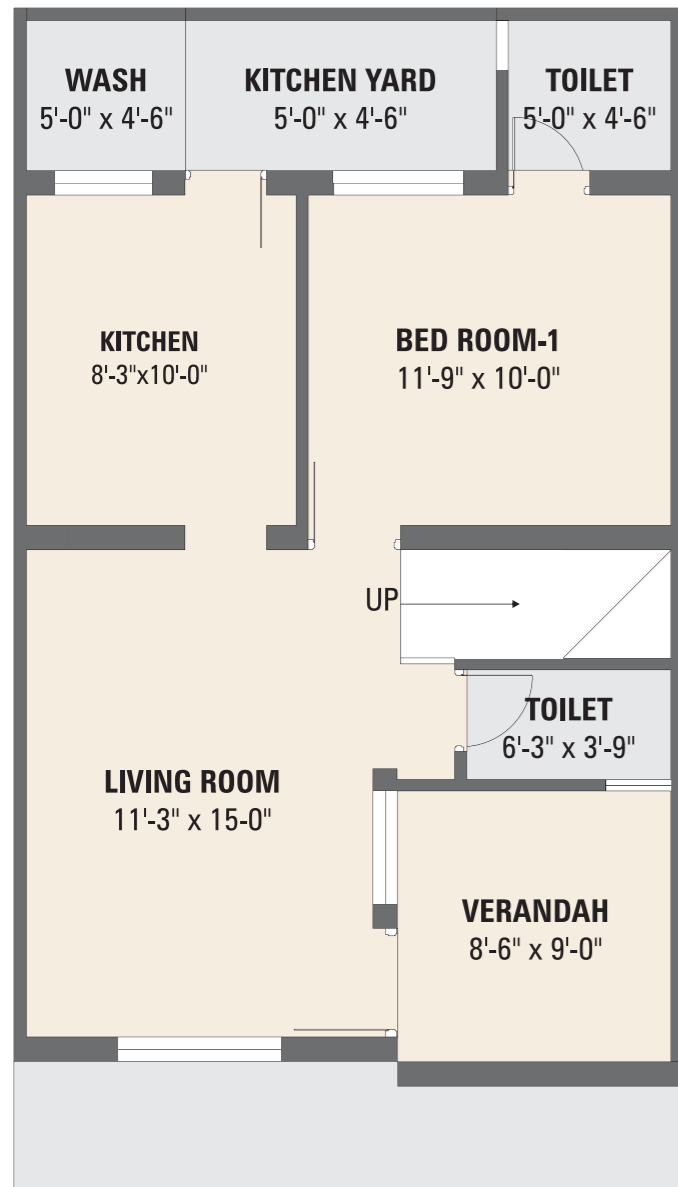
SUFFICIENT PARKING



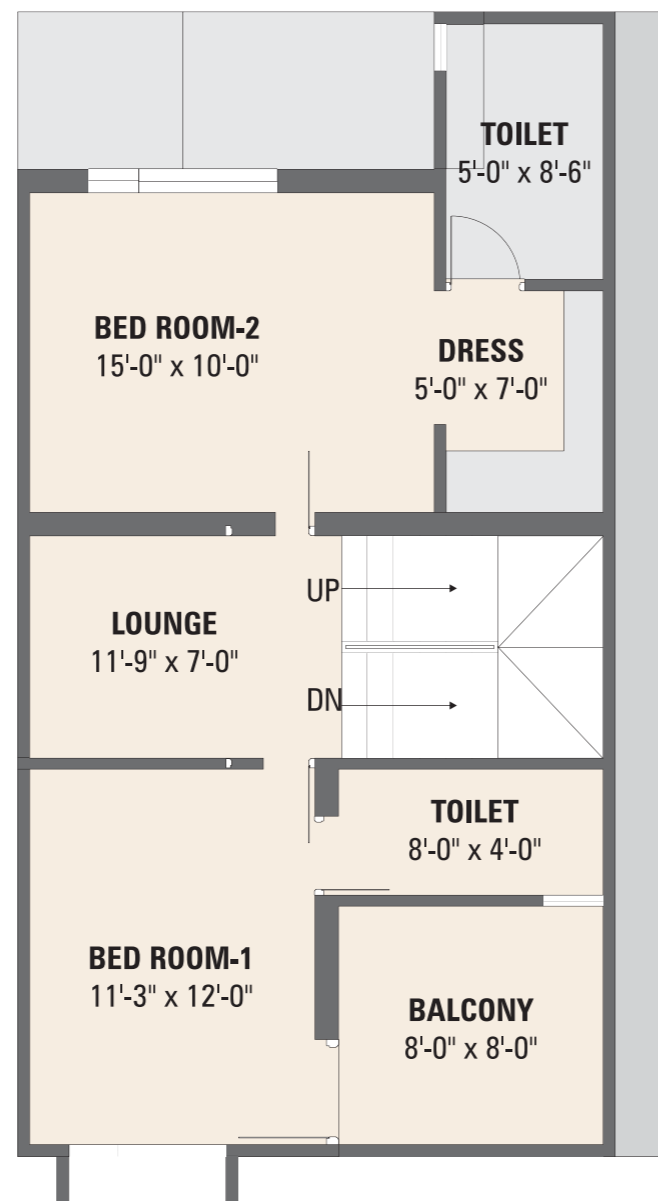
CHILDREN DROP-OFF ZONE



R.C.C. ROAD

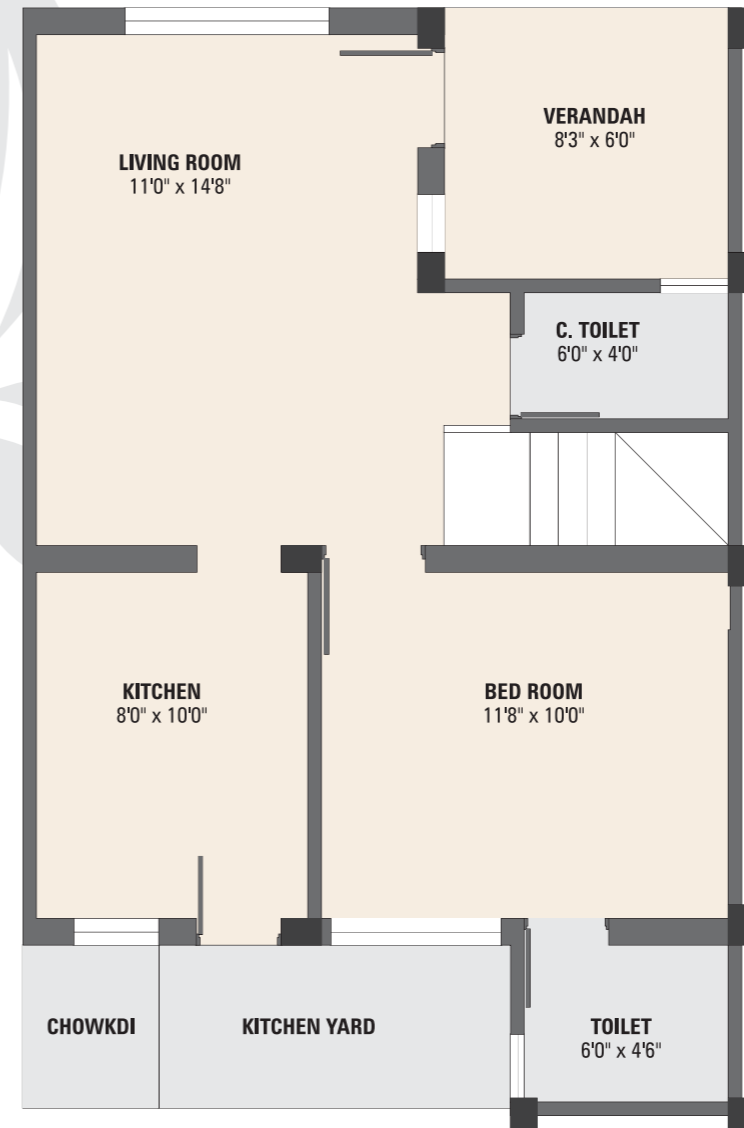


 **GROUND FLOOR**

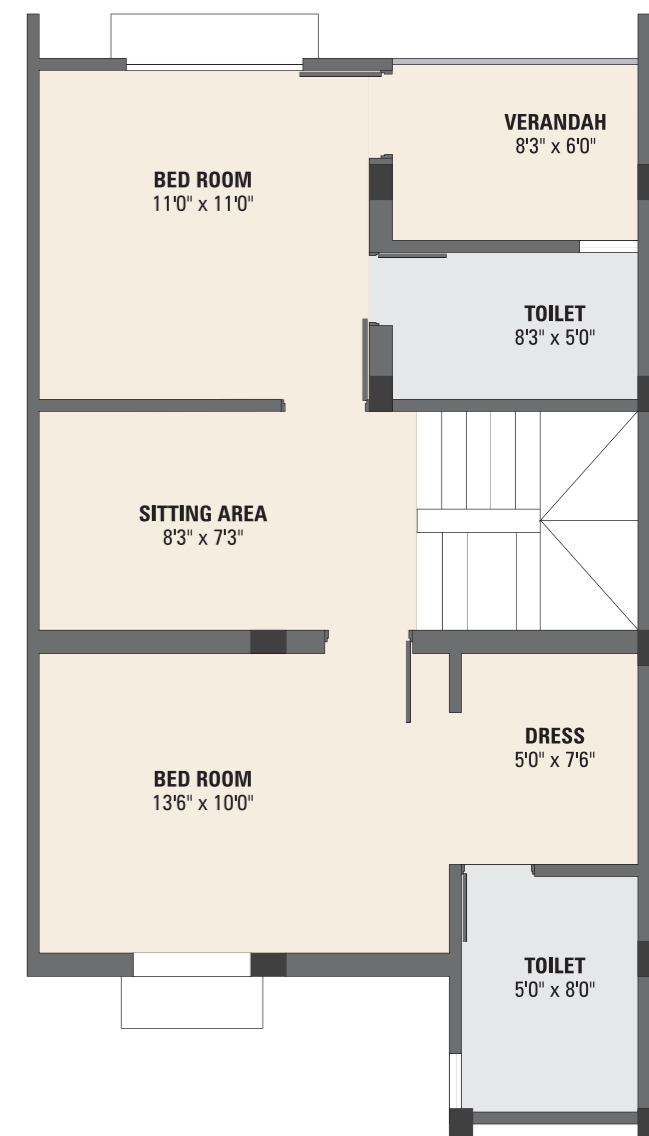


 **FIRST FLOOR**

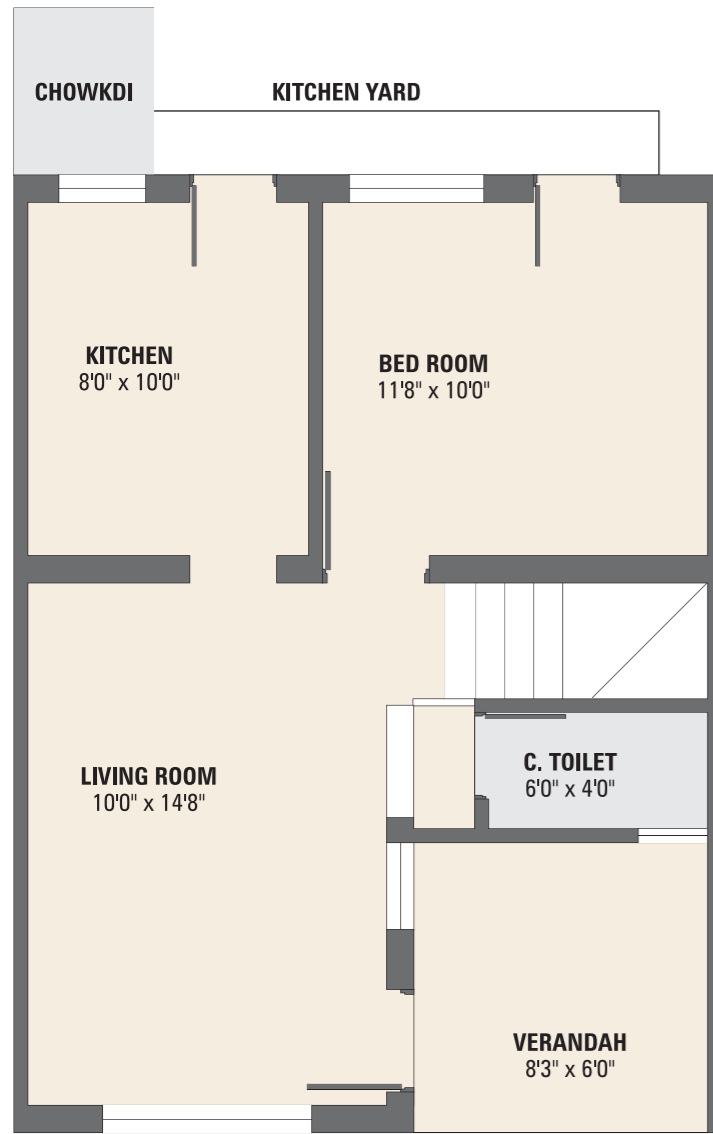
 **3 BHK**



 **GROUND FLOOR**

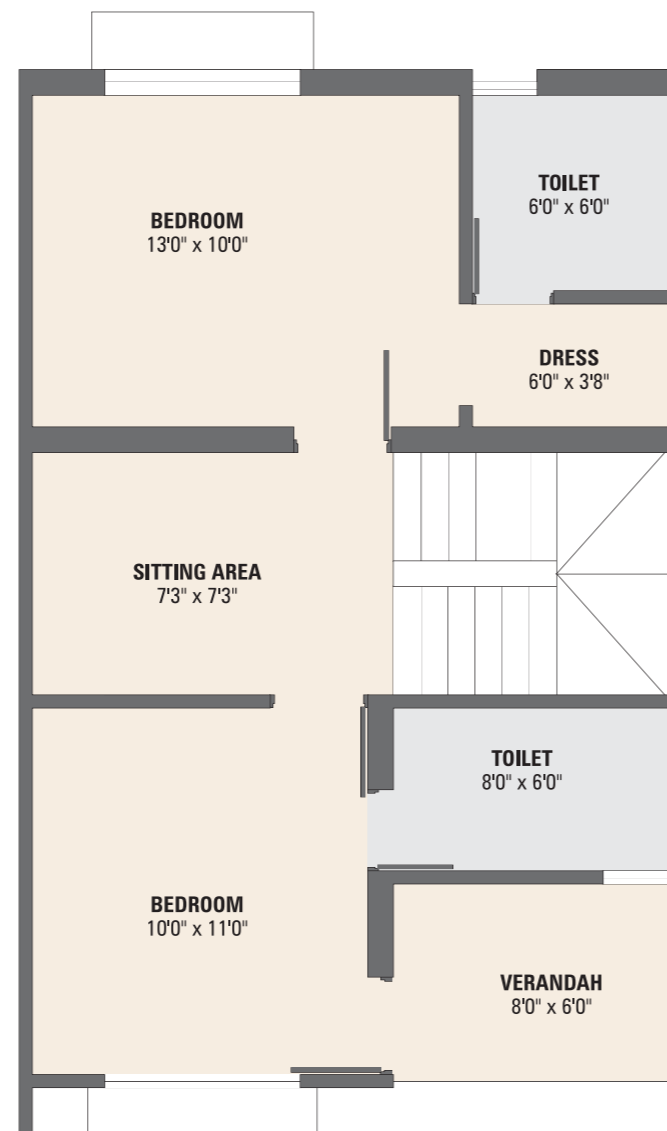


 **FIRST FLOOR**

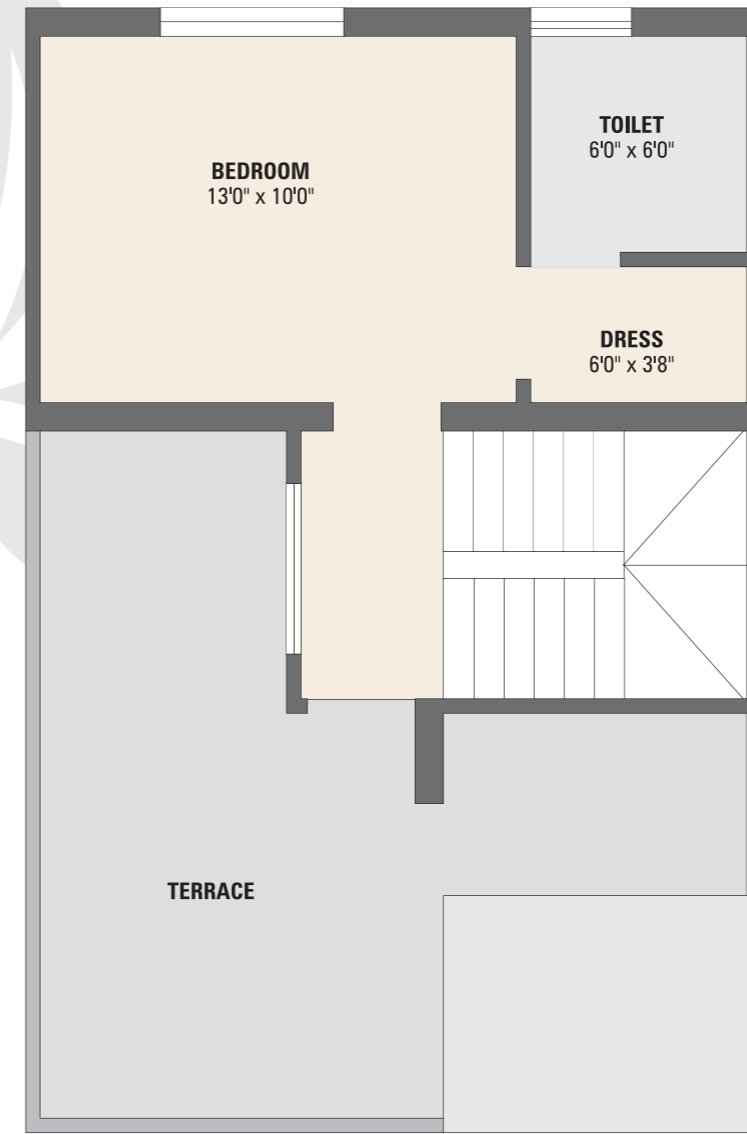


 **GROUND FLOOR**

 **4 BHK**



 **FIRST FLOOR**



 **SECOND FLOOR**

 **4 BHK**

