



LUXURY
IS LARGER THAN
LIFE!

Developers :
SHUGAN Developers

Architect :
prakalpanarchitects

Structure :
SHREEJI
STRUCTURALS

Site:
Pushkar Status, Bh. Kamdhenu Tenement,
Nr. Harjit Motors, Narol-Naroda Road,
Isanpur Cross Road, Isanpur, Ahmedabad.

72260 63223



SCAN FOR LOCATION

RERA REGISTRATION NO: 00/00/000000000/000000000 0000/0000/00000000/000000
WEBSITE : <https://gujrera.gujarat.gov.in>

Disclaimer :

- All rights are reserved to developer for any changes in plan & specification.
- Irregular payment shall cause cancellation of booking.
- TORRENT, A.M.C., stamp duty, legal charges GST, other tax, narmada water connection, gas & maintenance deposit will be charged extra.
- Any additional liabilities due to change in the by laws, Stamp duty, Govt. Laws shall be borne by member.
- Change in external elevation shall not be permitted. internal changes shall be done only with prior permission & shall be charge extra.
- Details & dimensions in brochure are indicative & for the tentative representation only which should not be treated as legal documents.
- Subject to Ahmedabad jurisdiction.



3 BHK
LUXURIOUS
LIVING

BEGINNING OF A
NEW LIFE

if you ever believed in the
beauty of your *dreams*

Presenting
PUSHKAR Status
3 BHK Luxurious Living,
a symbol of a life,
happiness surroundings
extra ordinaire, a corner
of paradise.



PUSHKAR
STATUS



PUSHKAR
STATUS

Comfort Living For, **30** Happy Families

PUSHKAR Status initiative featuring 30 UNITS in the project that includes every comfort, convenience and creativity right where you live...



ENTRANCE GATE



SECURITY CABIN



CCTV CAMERA



SS AUTOMATIC LIFT



DESIGNED FOYER AREA



UNDER GROUND &
GROUND LEVEL PARKING



24 x 7 WATER SUPPLY

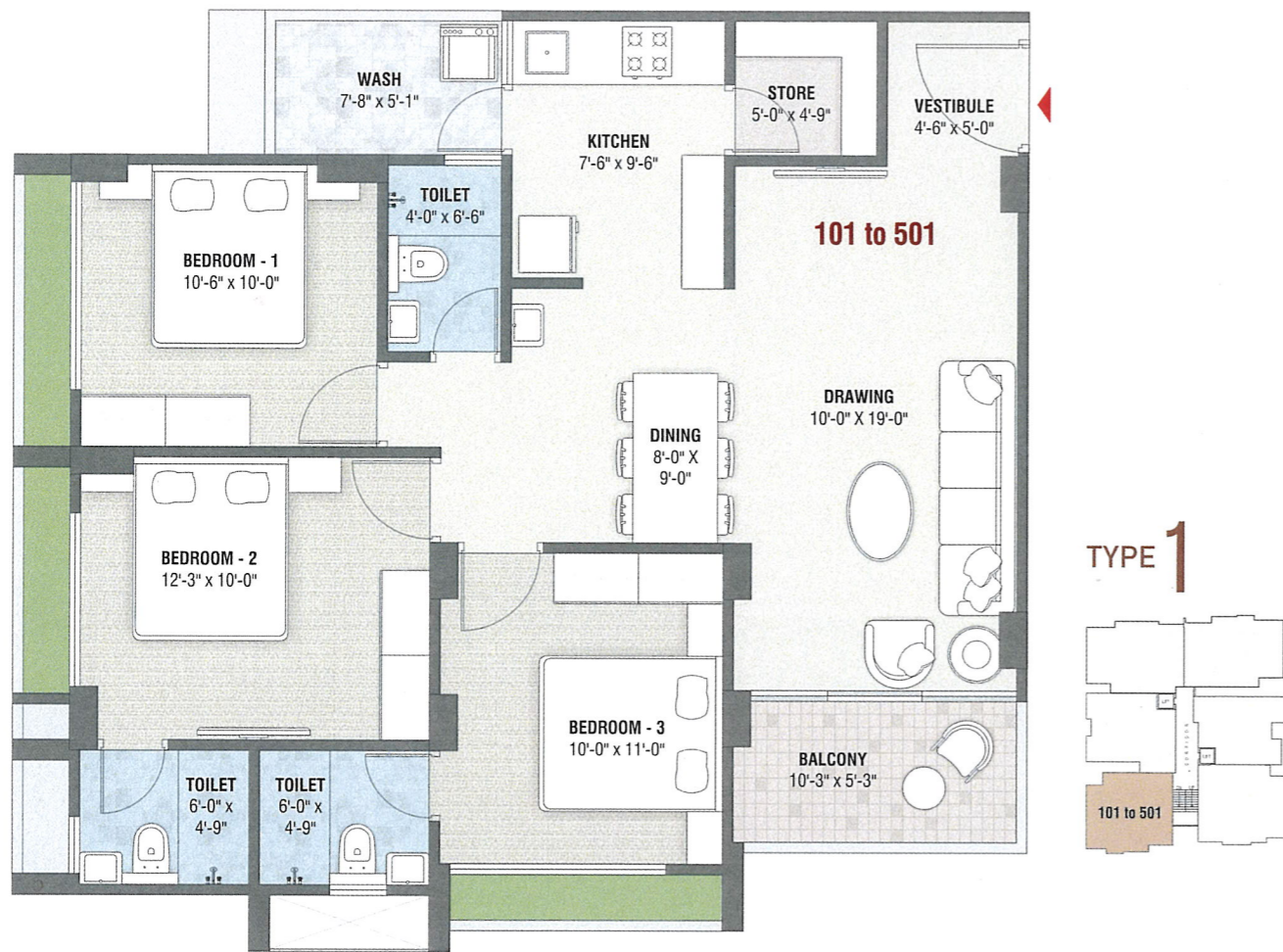


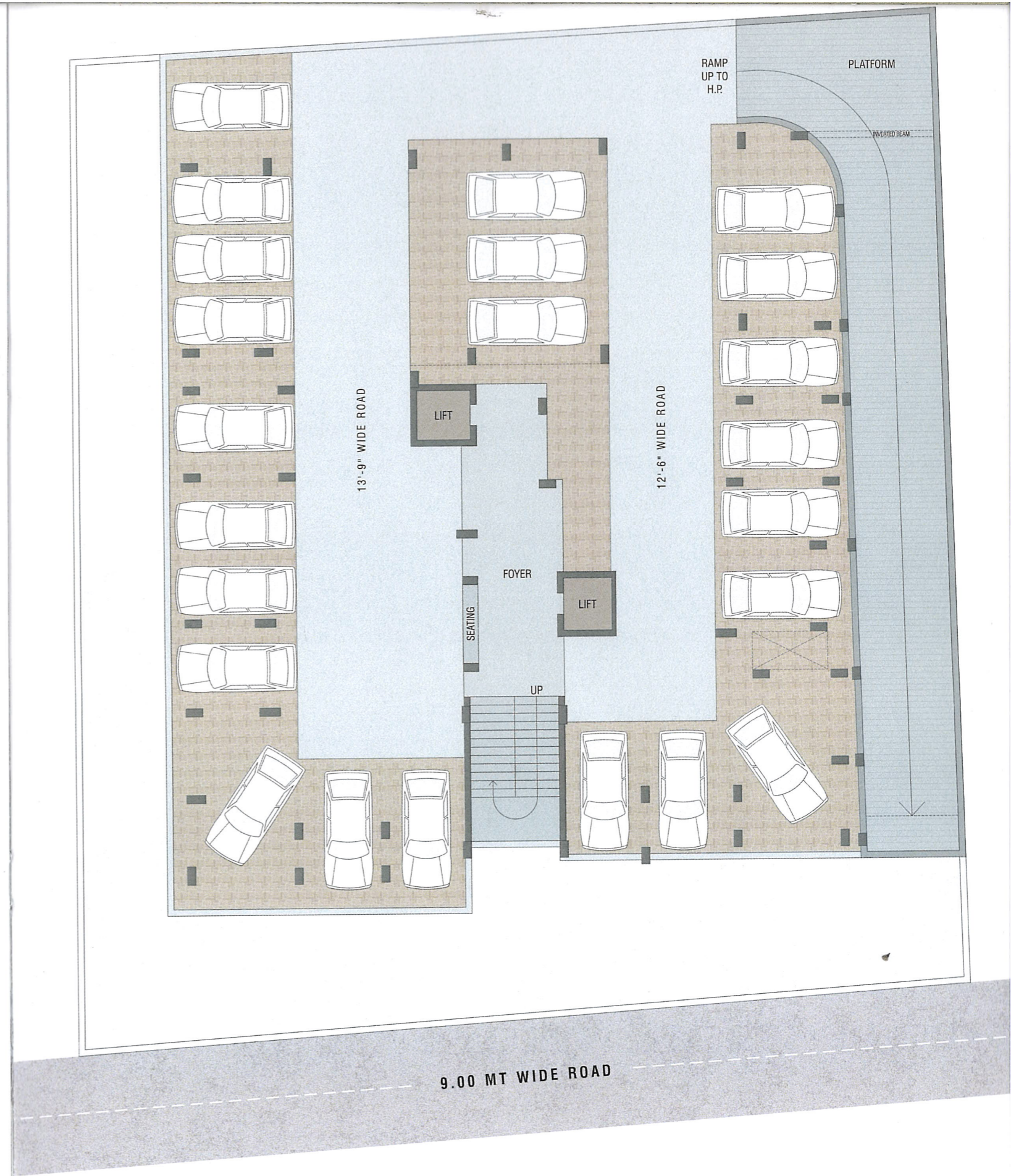
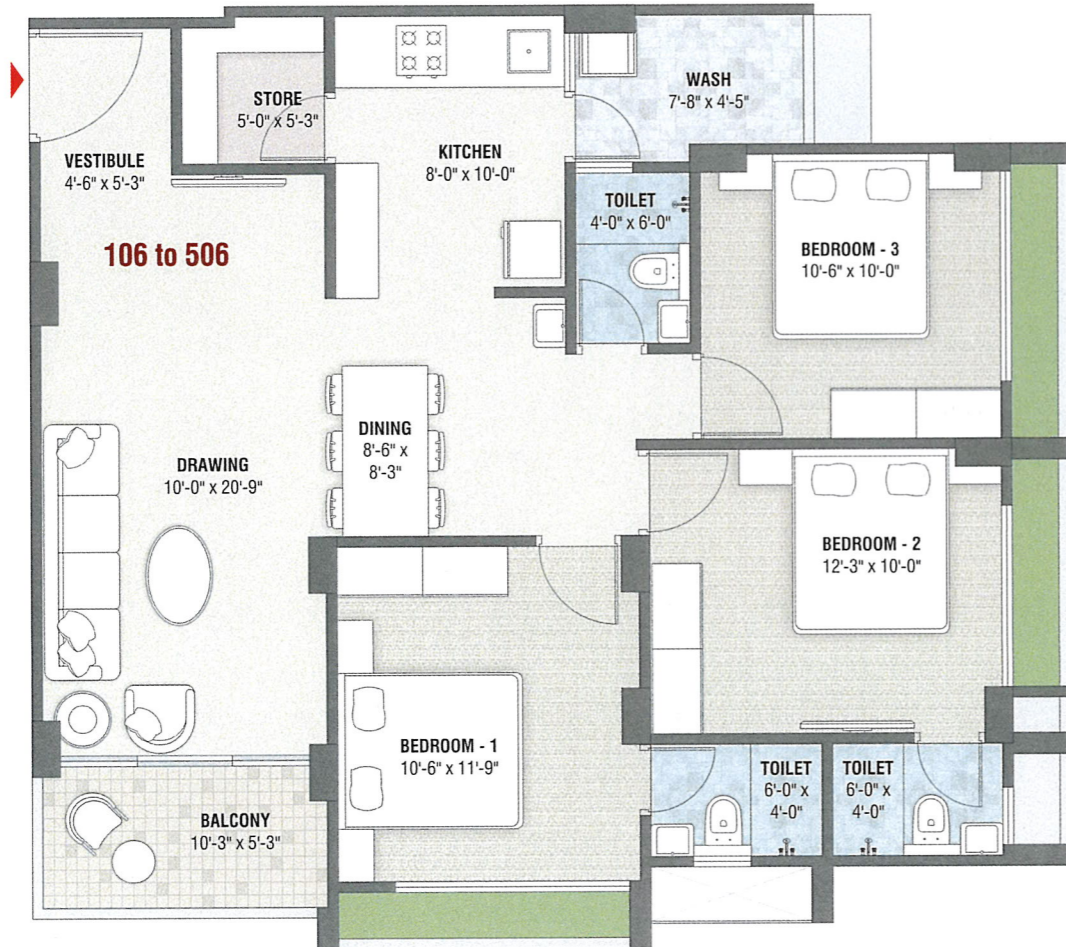
GROUND
FLOOR PLAN



1st TO 5th
FLOOR PLAN







BASEMENT
FLOOR PLAN



For some
it is blissful *heaven*

Wonderfully peaceful
and comforted lifestyle,
PUSHKAR Status 3 BHK
Luxurious Living invites
you to embrace life in a
grand way.



PUSHKAR
STATUS



SPECIFICATION

FLOORING

- GOOD QUALITY VITRIFIED TILES.

KITCHEN

- GRANITE PLATFORM CERAMIC TILES.
- DADO UP TO LINTEL LEVEL.

- SINGLE BOWL S. S. SINK.

WASH

- KOTA FLOORING.

TOILET

- STANDARD BRANDED C.P. FITTING & SANITARY FITTING.

LIFT

- AUTOMATIC GOOD QUALITY PASSENGER LIFT.

PLUMBING

- CPVC / UPVC PIPING FOR WATER SUPPLY SYSTEM.

- OVER HEAD WATER TANK IN EACH BLOCK.

MAIN DOOR

- ATTRACTIVE MAIN DOOR WITH WOODEN FRAME.
- INTERNAL FLUSH DOOR.

WINDOWS

- ANODIZED COATED ALUMINIUM SECTION.

ELECTRIFICATION

- CONCEALED FITTING WIRING OF STANDARD (ISI MARK).
- COMPANY WITH MODULAR SWITCHES.

INTERIOR FINISH

- SINGLE COAT PLASTER WITH PUTTY FINISH.

EXTERIOR FINISH

- DOUBLE COAT PLASTER WITH ACRYLIC PAINT FINISH.

TERRACE

- DOUBLE COAT WATER PROOFING WITH CHINA MOSAIC FLOORING.

BUILDING FOYER

- ATTRACTIVE BUILDING ENTRY FOYER.